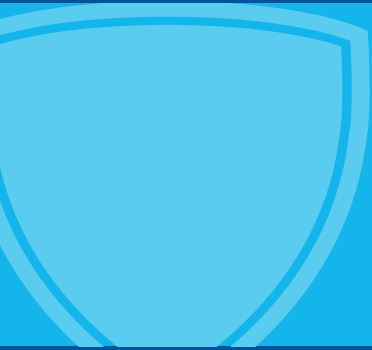


i protect with  <sup>TM</sup>



# STRETCH FILM





# Stretch Film Products

Manufactured by IPG® for the Consumer Market

*Intertape Polymer Group® produces both cast and blown stretch film in our modern stretch production facilities. This assures that we will have the right type of product to offer our customers regardless of the application. Our stretch film manufacturing facilities are ISO certified and utilize techniques such as Six Sigma and Lean Manufacturing to ensure we produce the highest quality products consistently and cost-effectively.*



Scan here to learn more about our Stretch Film Products

## Cast Stretch Film

- Manufactured in multi-layer versions
- Excellent load retaining capability
- High film puncture and tear resistance
- Superior film clarity
- Single-sided or two-sided cling varieties
- Thinner gauge films with significant performance and cost savings

ADVANTAGES



## Blown Stretch Film

- Manufactured as both monolayer and three-layer stretch film
- Superior load-holding capability
- Very high levels of puncture and tear resistance
- High cling levels

ADVANTAGES




## Stretching the Possibilities

A market leader in research and technology, Intertape Polymer Group® is committed to continuously create new products and methods to support the changing needs of our customers and to help them grow their businesses. IPG® has invested heavily in new production lines and is constantly working with industry leading suppliers of both resins and process technology to bring innovation and value to stretch film consumers.



# Choosing the Right Product Key Factors to Consider in Stretch Film Selection

Factor	Situation(s)	Solution(s)
Is there a centralized packaging area?	Yes	Consider using wrapping equipment
	No	Likely candidate for hand wrapping
What is the production volume?	Low (<30 pallets/8 hours)	Hand applied film
	Medium (30-100 pallets/8 hours)	Semi-automatic machine applied film
	High (>100 pallets/8 hours)	Automatic film application
What is the load weight?	Low (Under 1200 lbs)	60 gauge or below hand or machine applied film
	Medium (1200-2000 lbs)	63-80 gauge hand or machine applied film
	High (Over 2000 lbs)	90 gauge or above hand or machine applied film
What is the load type?	Type "A" - Regular shaped pallet with product fitting pallet closely 	60 gauge or below hand or machine applied film
	Type "B" - Slightly irregular load - corners and/or product fitting within 3 inches on sides 	63-80 gauge hand or machine applied film
	Type "C" - Highly irregular loads and/or loads which are greater than 3 inches from fitting size of pallet 	90 gauge or above hand or machine applied film
What is the speed of the film application?	Low (hand applied or <15 RPM)	Any hand wrap or machine grade film
	Medium (machine applied 16-25 RPM)	Any machine grade film
	High (machine applied above 25 RPM)	SSC or Genesys film

## Questions Our Sales Team Will Ask

- If machine applied, what type of machine is it and what is the prestretch level?
- What types of film (if any) are you currently using and how is it working?
- How are packaged products stored and shipped, and for what periods of time?

*The answers to these and other questions will provide the guideposts for our sales engineers to provide the perfect recommendations.*





# SuperFLEX<sup>®</sup>

brand performance stretch wrap

IPG<sup>®</sup>'s SuperFLEX<sup>™</sup> high performance stretch brand products are light gauge, environmentally friendly stretch films used to effectively replace traditional heavier gauge stretch film. They are available in both machine applied and hand applied and in cast and blown versions.

- Best-in-class load holding power
- Resistance to puncture and tear equal to films up to 40% heavier in gauge
- Lighter gauge Genesys<sup>®</sup> & Genesys<sup>®</sup> Ultra machine rolls with longer footage rolls reduce the number of roll changes required
- Lighter gauge hand applied films like Prolite<sup>™</sup> and Fortress<sup>®</sup> provide the same performance of heavier gauge products in rolls weighing half the weight
- Available oxo-biodegradable versions which can completely degrade over time but which are also fully recyclable
- Costs to wrap loads will be reduced

ADVANTAGES

## Machine Applied Stretch Films

- High stretch capability (300% on 63 gauge)
- Works well on high speed stretch wrappers in excess of 50 RPM
- Excellent film clarity for displaying products or reading bar codes
- Silent Film Application

### Genesys<sup>®</sup>

- Down gauged film (50 to 95 gauge plus)
- Up to 35% cost savings possible
- Longer footage rolls can reduce roll change frequency by 50%
- Machine stretchable to 300% plus (63 gauge and above)
- Wide variety of sizes available
- Available with UVI protectant or with OXO-Biodegradable formulation

ADVANTAGES



Genesys<sup>®</sup>  
STRETCH FILM<sup>™</sup>

### Genesys<sup>®</sup> Ultra

- Ultra light gauge products (39 to 45 gauge) with up to 45% cost savings possible
- Longer footage rolls can reduce roll change frequency by 50%
- Machine stretchable up to 250%
- Crystal clear formulation applies silently
- Minimizes ecological footprint

ADVANTAGES



Genesys<sup>®</sup> Ultra  
STRETCH FILM<sup>™</sup>

TAPES & FILMS • PACKAGING PRODUCTS & SYSTEMS  
BUILDING MATERIALS • ENGINEERED COATED PRODUCTS

# Hand Applied Stretch Films

- Excellent load retention properties
- High strength products require less film stretching
- Elastic properties keep film tight if load settles
- Reduced film “neckdown” (width reduction) during tensioning
- Lighter gauges and roll weights mean less operator fatigue
- Elevated tear and puncture strength
- Excellent film clarity for best product visibility and reading bar codes
- Significant cost savings advantages over conventional, heavier gauge films

## Prolite™

- Multi-layer cast hand film provides excellent clarity, silent application and load retention
- Two-sided cling
- Film gauges available:
  - 40 ga - replaces conventional 50-70 gauge cast with savings to 32%
  - 47 ga - replaces conventional 55-80 gauge cast with savings to 31%
  - 59 ga - replaces conventional 70-90 gauge cast with savings to 26%

ADVANTAGES

**PROLITE™**  
High Performance Hand-Applied Stretch Wrap

## Fortress®

- Blown products provide good clarity
- Two-sided, highly aggressive cling package ideal for cold temperature applications
- Film gauges available:
  - 47 ga - replaces conventional 60-75 gauge blown with savings to 27%
  - 53 ga - replaces conventional 65-80 gauge blown with savings to 25%

ADVANTAGES

**FORTRESS™**  
Safeguarding Your Products

## Orbit Air™ B

- Pre-stretched, blown film with soft wind and hemmed edges
- Two-sided cling package
- Film sizes available:
  - 14 ½” x 457m
  - 14 ½” x 575m
  - 17” x 457m
  - 17” x 575m

ADVANTAGES

**Orbit air™ B**  
HIGH PERFORMANCE STRETCH FILM

i protect with **ipg**

800-IPG-8273 / 800-474-8273  
www.itape.com | E-mail: info@itape.com



IPG's StretchFLEX® standard duty stretch brand products have a reputation for reliability and consistency. StretchFLEX® products are also available as machine applied and hand applied, and in cast and blown versions. StretchFLEX® products are the right choice for applications where heavier gauge films make sense.

- Best-in-class load holding power
- Excellent resistance to being punctured or torn
- A very wide range of available product sizes
- Machine film available with single-sided cling and two-sided cling

ADVANTAGES

## Machine Applied Stretch Films

### StretchFLEX® SSC

- Multilayer cast film
- Exceptional load retention properties
- Stretches to 275% stretch level (80 gauge product)
- Exceptional puncture and tear resistance
- Works well on stretch equipment with speeds to 30 RPM
- True one-side cling prevents adjacent loads from sticking together
- Wide variety of film sizes available

ADVANTAGES

### StretchFLEX® I

- BMultilayer cast film
- High load retention properties
- Stretches to 250% (80 gauge product)
- Exceptional tear and puncture resistance
- Two-side cling
- Wide variety of width, gauge, and roll lengths available
- Crystal clear formulation applies silently

ADVANTAGES

### StretchFLEX® III

- Blown film
- Exceptional load retention properties
- Stretches to 275% stretch level (80 gauge product)
- Superior puncture and tear resistance
- Two-sided cling with very high cling levels - great for cold temperature applications
- Film gauges available to 120 gauge

ADVANTAGES

# Hand Applied Stretch Films

## StretchFLEX® HWII

- Blown film
- Superior load retention properties
- Exceptional toughness to resist puncturing and tearing on irregular loads
- Aggressive 2-sided cling package provides secure tail retention
- Available in traditional imperial sizes (12", 15", 18")
- Best for highly irregular and heavy loads

ADVANTAGES

## StretchFLEX® HWIV

- Multilayer cast film
- Good load retention properties
- Good puncture and tear resistance
- 2-sided cling
- Available in imperial and metric sizes
- Crystal clear, silent film application

ADVANTAGES

## SF ExpressWrap

- Cast film
- Narrow widths: 3" and 5" widths ideal for bundling products - available with either plastic dispensers (included) or extended cores to provide convenient grip
- Available in 20" widths with extended core
- Excellent puncture and tear resistance
- 2-sided cling
- Crystal clear, silent film application

ADVANTAGES

**EXPRESSWRAP**™



i protect with

## CORPORATE PROFILE

Intertape Polymer Group Inc. (IPG) is an acknowledged leader in the packaging industry. Leveraging its advanced manufacturing and technologies, extensive research and development capabilities and a comprehensive strategic acquisition program, the company believes it has assembled the broadest and deepest range of products in the industry. IPG is widely recognized for its development and manufacture of specialized polyolefin, plastic and paper-based packaging products, as well as complementary packaging systems for industrial and retail use. Additionally, IPG is a woven and flexible intermediate bulk container (FIBC) manufacturer. Its performance products, including tapes and cloths, are designed for demanding aerospace, automotive and industrial applications and are sold to a broad range of industry/specialty distributors, retail stores and large end-users in diverse industries.



1. Langley, British Columbia ● ▲
2. Ontario, CA ▲
3. Tremonton, UT ●
4. Brighton, CO ●
5. Monterrey, Mexico ▲
6. Menasha, WI ●
7. Carbondale, IL ●
8. Marysville, MI ●
9. Danville, VA ● ▲
10. Columbia, SC ●
11. Tampa, FL ● ▲
12. **Executive Headquarters**  
Sarasota, FL
13. **Corporate Headquarters**  
St. Laurent, Quebec
14. Truro, Nova Scotia ●
15. Flensburg, Germany ▲
16. Porto, Portugal ●



- Manufacturing
- ▲ Distribution

**800-IPG-8273 / 800-474-8273**

[www.itape.com](http://www.itape.com) | E-mail: [info@itape.com](mailto:info@itape.com)

Marysville, MI Fax: 800-368-8273 | Columbia, SC Fax: 800-462-1293  
Montreal, QC Fax: 800-561-3671 | Tape Technical Help: 877-447-4832

