



**STAINLESS
STEEL
ROD ENDS**

2-Piece Stainless Steel Rod Ends

PTFE Lined - Right & Left Hand Threads - Male & Female

C O M M E R C I A L

Specifications

BALL

- 440C Stainless Steel
- Heat Treated
- Hard Chrome Plated
- Precision Ground

BODY

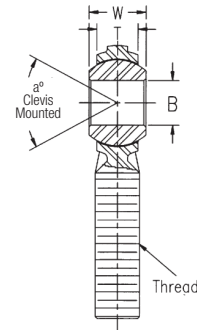
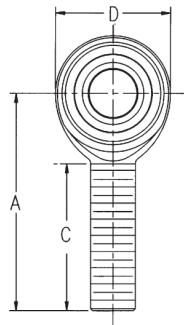
- 300 Series Stainless Steel
- PTFE Lined

Male

ITEM NUMBER

DIMENSIONS IN INCHES

Right Hand	Left Hand	B + .0015 - .0005	W ± .005	T Ref.	A ± .015	D ± .010	Ball Dia. Ref.	C + .062 - .031	Thread UNF-3A	Misalign. Angle a°	Ult. Radial Static Load Lbs.	Approx. Brg. Wgt. Lbs.
20G040	20G041	0.1900	0.312	0.234	1.250	0.625	0.437	0.750	10-32	20	1,190	0.03
20G042	20G043	0.2500	0.375	0.250	1.562	0.750	0.500	1.000	1/4-28	27	2,165	0.04
20G044	20G045	0.3125	0.437	0.312	1.875	0.875	0.625	1.250	5/16-24	22	3,278	0.07
20G046	20G047	0.3750	0.500	0.359	1.938	1.000	0.719	1.250	3/8-24	22	4,527	0.11
20G048	20G049	0.4375	0.562	0.406	2.125	1.125	0.812	1.375	7/16-20	21	5,689	0.15
20G050	20G051	0.5000	0.625	0.453	2.438	1.312	0.937	1.500	1/2-20	20	7,352	0.24
20G052	20G053	0.6250	0.750	0.484	2.625	1.500	1.125	1.625	5/8-18	26	8,200	0.36
20G054	20G055	0.7500	0.875	0.593	2.875	1.750	1.312	1.750	3/4-16	24	11,595	0.57

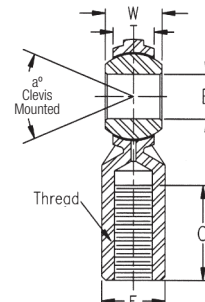
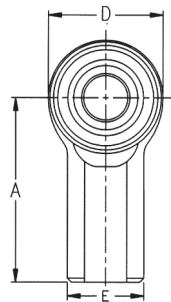


Female

ITEM NUMBER

DIMENSIONS IN INCHES

Right Hand	Left Hand	B + .0015 - .0005	W ± .005	T Ref.	A ± .015	D ± .010	E ± .010	F ± .010	Ball Dia. Ref.	C + .062 - .031	Thread UNF-2B	Misalign. Angle a°	Ult. Radial Static Load Lbs.	Approx. Brg. Wgt. Lbs.
20G024	20G025	0.1900	0.312	0.234	1.062	0.625	0.406	0.312	0.437	0.500	10-32	20	1,190	0.04
20G026	20G027	0.2500	0.375	0.250	1.312	0.750	0.469	0.375	0.500	0.687	1/4-28	27	2,165	0.05
20G028	20G029	0.3125	0.437	0.312	1.375	0.875	0.500	0.437	0.625	0.687	5/16-24	22	3,278	0.08
20G030	20G031	0.3750	0.500	0.359	1.625	1.000	0.687	0.562	0.719	0.812	3/8-24	22	4,527	0.13
20G032	20G033	0.4375	0.562	0.406	1.812	1.125	0.750	0.625	0.812	0.937	7/16-20	21	5,689	0.18
20G034	20G035	0.5000	0.625	0.453	2.125	1.312	0.875	0.750	0.937	1.062	1/2-20	20	7,352	0.29
20G036	20G037	0.6250	0.750	0.484	2.500	1.500	1.000	0.875	1.125	1.375	5/8-18	26	8,200	0.43
20G038	20G039	0.7500	0.875	0.593	2.875	1.750	1.125	1.000	1.312	1.562	3/4-16	24	11,595	0.65





**STAINLESS
STEEL
ROD ENDS**

2-Piece Stainless Steel Rod Ends with Stud Configuration

PTFE Line - Right & Left Hand Threads - Male & Female

Specifications

BALL

- 440C Stainless Steel
- Heat Treated
- Hard Chrome Plated
- Precision Ground

BODY

- 300 Series Stainless Steel
- PTFE Lined

STUD

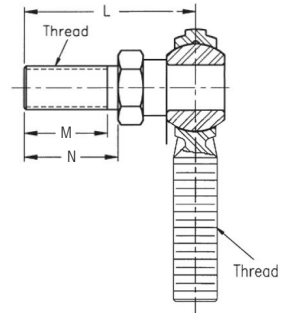
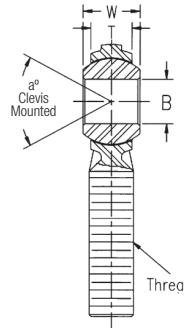
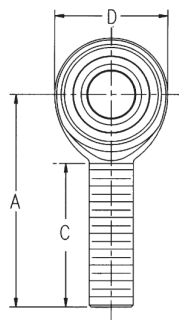
- Stainless Steel

ITEM NUMBER

DIMENSIONS IN INCHES

Male with Stud

Right Hand	Left Hand	B + .0015 - .0005	W ± .005	T Ref.	A ± .015	D ± .010	Ball Dia. Ref.	C + .062 - .031	Thread UNF-3A	Misalign. Angle a°	Approx. Brg. Wgt. Lbs.	L Ref.	N ±.010	M Ref.
20G072	20G073	0.1900	0.312	0.234	1.250	0.625	0.437	0.750	10-32	20	0.04	1.000	0.500	0.437
20G074	20G075	0.2500	0.375	0.250	1.562	0.750	0.500	1.000	1/4-28	27	0.06	1.031	0.562	0.500
20G076	20G077	0.3125	0.437	0.312	1.875	0.875	0.625	1.250	5/16-24	22	0.11	1.219	0.687	0.593
20G078	20G079	0.3750	0.500	0.359	1.938	1.000	0.719	1.250	3/8-24	22	0.16	1.562	0.906	0.812
20G080	20G081	0.4375	0.562	0.406	2.125	1.125	0.812	1.375	7/16-20	21	0.20	1.750	1.062	0.937
20G082	20G083	0.5000	0.625	0.453	2.438	1.312	0.937	1.500	1/2-20	20	0.36	2.000	1.125	1.000
20G084	20G085	0.6250	0.750	0.484	2.625	1.500	1.125	1.625	5/8-18	26	0.59	2.500	1.500	1.375
20G086	20G087	0.7500	0.875	0.593	2.875	1.750	1.312	1.750	3/4-16	24	1.02	3.000	1.812	1.625

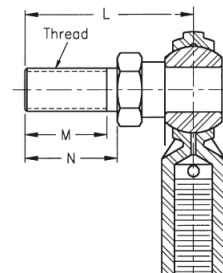
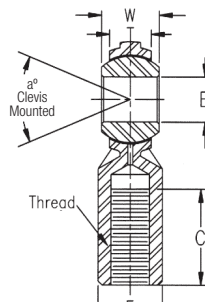
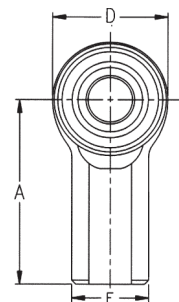


ITEM NUMBER

DIMENSIONS IN INCHES

Female with Stud

Right Hand	Left Hand	B + .0015 - .0005	W ± .005	T Ref.	A ± .015	D ± .010	E ± .010	F ± .010	Ball Dia. Ref.	C + .062 - .031	Thread UNF-2B	Misalign. Angle a°	Approx. Brg. Wgt. Lbs.	L Ref.	N ±.010	M Ref.
20G056	20G057	0.1900	0.312	0.234	1.062	0.625	0.406	0.312	0.437	0.500	10-32	20	0.05	1.000	0.500	0.437
20G058	20G059	0.2500	0.375	0.250	1.312	0.750	0.469	0.375	0.500	0.687	1/4-28	27	0.08	1.031	0.562	0.500
20G060	20G061	0.3125	0.437	0.312	1.375	0.875	0.500	0.437	0.625	0.687	5/16-24	22	0.11	1.219	0.687	0.593
20G062	20G063	0.3750	0.500	0.359	1.625	1.000	0.687	0.562	0.719	0.812	3/8-24	22	0.12	1.562	0.906	0.812
20G064	20G065	0.4375	0.562	0.406	1.812	1.125	0.750	0.625	0.812	0.937	7/16-20	21	0.21	1.750	1.062	0.937
20G066	20G067	0.5000	0.625	0.453	2.125	1.312	0.875	0.750	0.937	1.062	1/2-20	20	0.44	2.000	1.125	1.000
20G068	20G069	0.6250	0.750	0.484	2.500	1.500	1.000	0.875	1.125	1.375	5/8-18	26	0.67	2.500	1.500	1.375
20G070	20G071	0.7500	0.875	0.593	2.875	1.750	1.125	1.000	1.312	1.562	3/4-16	24	1.09	3.000	1.812	1.625



AVAILABLE THROUGH

GRAINGER

FOR THE ONES WHO GET IT DONE