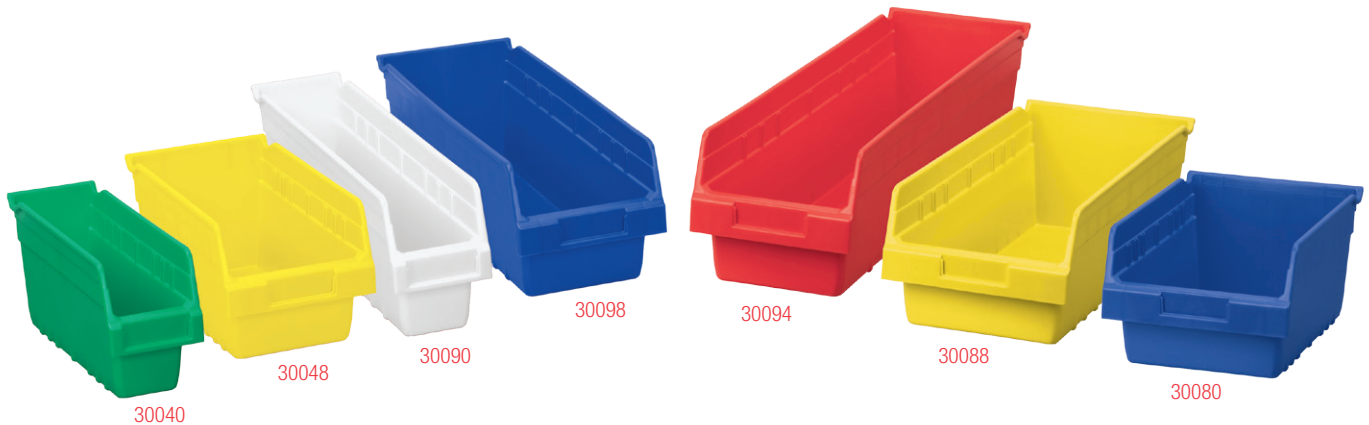


ShelfMax® Bins

30040 • 30048 • 30080 • 30088 • 30090 • 30094 • 30098



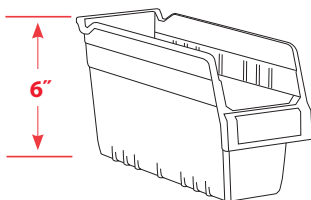
Akro-Mils' industry-leading **ShelfMax line of 6" high storage bins** is growing with the addition of three new sizes –
 11 5/8" L x 8 3/8" W x 6" H • 17 7/8" L x 8 3/8" W x 6" H • 23 5/8" L x 6 5/8" W x 6" H



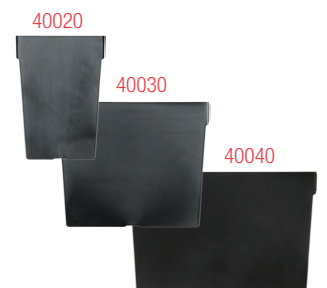
- 1 **Front opening is 3/4" higher** than comparable 6" products
- 2 **Reinforced side ribs** for added strength
- 3 **Large label area** aids in part identification and bar code scanning
- 4 **Rolled ridge** provides added strength and durability when filled to maximum capacity
- 5 **Built-in rear hanglock** allows bin to tilt out for complete access

- Superior construction compared to corrugated bins
- Seven sizes and six colors: Red, Blue, Yellow, Green, White, Clear
- Optional width dividers keep items neatly separated
- Works with Akro-Mils steel shelving, wire shelving, pick racks and bench racks to make organization easy and more efficient (*see reverse*)

NEW!



Model No.	Outside Dimensions Inches			Bottom Dimensions Inches			Storage Capacity		Optional Dividers	Divider Pkg. Qty.
	L	W	H	L	W	H	Cubic Inches	Ctn. Qty.		
30040	11 1/8	4 1/8	6	9 3/4	2 1/2	5 1/16	175	16	40020	12
30048	17 7/8	4 1/8	6	16	2 1/2	5 1/16	280	8	40020	12
30080	11 1/8	8 3/8	6	9 3/4	6 3/8	5 1/16	398	8	40040	12
30088	17 7/8	8 3/8	6	16	6 3/8	5 1/16	648	8	40040	12
30090	11 1/8	6 3/8	6	9 3/4	5	5 1/16	310	10	40030	12
30094	23 5/8	6 3/8	6	21 3/4	5	5 1/16	686	10	40030	12
30098	17 7/8	6 3/8	6	16	5	5 1/16	505	10	40030	12

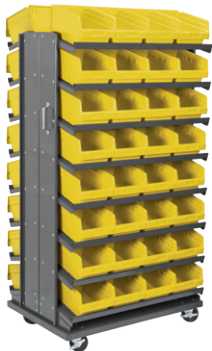


AKRO-MILS®

800.253.2467 • akro-mils.com

ShelfMax® Bins

Shelving Systems



Pick Rack Systems

- Available as single-sided or double-sided
- Angled shelves keep parts at the front of bins for easy access
- 16-gauge steel construction
- 400-800 lb. weight capacity



Steel Shelving Systems

- Manufactured from high-grade, 22-gauge steel with a powder-coated finish
- Easy assembly
- 500 lb. weight capacity per shelf, up to 8,500 lbs.



Wire Shelving Systems

- Constructed from steel with a chrome finish for durability and strength
- Open wire design minimizes dust collection and improves visibility
- 2,000 lb. max. weight capacity per unit

Bin Dimensions (In.)

Model No.	Description	Bin Model No.	L	W	H	Pack Qty.	Bins Per Shelf	Total Bins
APRS040	12" Deep Single Pick Rack: 8 Shelves	30040	11%	4%	6	16	8	64
APRS080	12" Deep Single Pick Rack: 8 Shelves	30080	11%	8%	6	8	4	32
APRS090	12" Deep Single Pick Rack: 8 Shelves	30090	11%	6%	6	10	5	40
APRSAST00	12" Deep Single Pick Rack: 8 Shelves	30040/30090	See above				8/5	32/20
APRD040	12" Deep Double Pick Rack: 16 Shelves	30040	11%	4%	6	16	8	128
APRD080	12" Deep Double Pick Rack: 16 Shelves	30080	11%	8%	6	8	4	64
APRD090	12" Deep Double Pick Rack: 16 Shelves	30090	11%	6%	6	10	5	80
APRDAST00	12" Deep Double Pick Rack: 16 Shelves	30040/30090	See above				8/5	64/40
APRS18048	18" Deep Single Pick Rack: 8 Shelves	30048	17%	4%	6	16	8	64
APRS18088	18" Deep Single Pick Rack: 8 Shelves	30088	17%	8%	6	8	4	32
APRS18098	18" Deep Single Pick Rack: 8 Shelves	30098	17%	6%	6	10	5	40
APRS18AST00	18" Deep Single Pick Rack: 8 Shelves	30048/30098	See above				8/5	32/20
APRD18048	18" Deep Double Pick Rack: 16 Shelves	30048	17%	4%	6	16	8	128
APRD18088	18" Deep Double Pick Rack: 16 Shelves	30088	17%	8%	6	8	4	64
APRD18098	18" Deep Double Pick Rack: 16 Shelves	30098	17%	6%	6	10	5	80
APRD18AST00	18" Deep Double Pick Rack: 16 Shelves	30048/30098	See above				8/5	64/40
APRBENCH040	3 Shelf Bench Pick Rack	30040	11%	4%	6	16	8	24
APRBENCH090	3 Shelf Bench Pick Rack	30090	11%	6%	6	10	5	15
AWS143630040	Wire Shelving: 9 Shelves	30040	11%	4%	6	16	8	64
AWS143630080	Wire Shelving: 9 Shelves	30080	11%	8%	6	8	4	32
AWS183630088	Wire Shelving: 9 Shelves	30088	17%	8%	6	8	4	32
AWS143630090	Wire Shelving: 9 Shelves	30090	11%	6%	6	10	5	40
AWS183630048	Wire Shelving: 9 Shelves	30048	17%	4%	6	8	8	64
AWS183630098	Wire Shelving: 9 Shelves	30098	17%	6%	6	10	5	40
AWS243630094	Wire Shelving: 9 Shelves	30094	23%	6%	6	10	5	40
AS1279040	Steel Shelving: 11 Shelves	30040	11%	4%	6	16	8	80
AS1279080	Steel Shelving: 11 Shelves	30080	11%	8%	6	8	4	40
AS1279090	Steel Shelving: 11 Shelves	30090	11%	6%	6	10	5	50
AS1879048	Steel Shelving: 11 Shelves	30048	17%	4%	6	8	8	80
AS1879088	Steel Shelving: 11 Shelves	30088	17%	8%	6	8	4	40
AS1879098	Steel Shelving: 11 Shelves	30098	17%	6%	6	10	5	50
AS2479094	Steel Shelving: 11 Shelves	30094	23%	6%	6	10	5	50

Note: Only one color bin per unit: Red, Blue, Yellow, Green, White, Clear



Bench Pick Rack

- Model No. APRBENCH040 or APRBENCH090
- 12" D x 36¾" W x 25" H
- Holds up to 24 ShelfMax Bins

For more on ShelfMax Bins, contact Akro-Mils at **800.253.2467** or visit **akro-mils.com** today.



1293 South Main Street, Akron, Ohio 44301 • Tel: 800.253.2467 • Fax: 330.761.6348 • sales@akro-mils.com
 In Canada: 8028 Torbram Road, Brampton, Ontario L6T 3T2 • Tel: 877.877.9680 • Fax: 905.791.4084 • sales@buckhorncanada.com
 Visit our website: akro-mils.com or buckhorncanada.com