



**METRIC
ROD
ENDS**

2-Piece Carbon Steel Rod Ends

Metal to Metal - Right & Left Hand Threads - Male & Female

C O M M E R C I A L

Specifications

BALL

- 52100 Bearing Steel
- Heat Treated
- Hard Chrome Plated
- Precision Ground

BODY

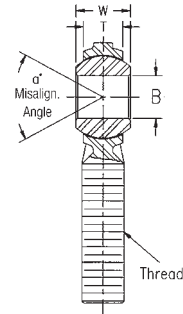
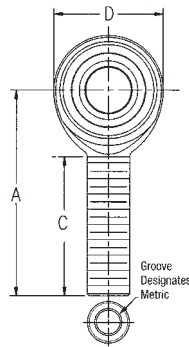
- Carbon Steel
- Protective Coated for Corrosion Resistance

ITEM NUMBER

DIMENSIONS IN MILLIMETERS

Male

Right Hand	Left Hand	B + .065 - 0.12	W ± .12	T Ref.	A ± .40	D Ref.	Ball Dia. Ref.	C ± 1.00	Thread 6H	Misalign. Angle	Ult. Radial Static Load Cap. (Newtons)	Approx. Brg. Wgt. (grams)
39N437	39N438	5	8	5.75	33	16.00	11.10	20	M5X.08	22	5,168	12
39N439	39N440	6	9	6.25	36	19.00	12.70	22	M6X1.0	23	7,296	18
39N441	39N442	8	12	8.00	42	22.25	15.88	25	M8X1.25	28	13,591	31
39N443	39N444	10	14	9.50	48	27.00	19.05	29	M10X1.5	26	21,024	68
39N445	39N446	12	16	10.75	54	30.00	22.23	33	M12X1.75	27	25,819	78
39N447	39N448	14	19	12.25	60	34.75	25.40	36	M14X2.0	30	35,214	118
39N449	39N450	16	21	12.75	66	38.00	28.58	40	M16X2.0	33	37,391	173

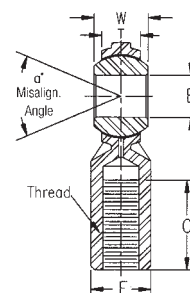
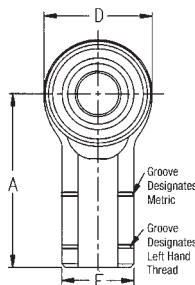


ITEM NUMBER

DIMENSIONS IN MILLIMETERS

Female

Right Hand	Left Hand	B + .065 - .012	W ± .12	T Ref.	A ± .40	D Ref.	E ± .25	F ± .25	Ball Dia. Ref.	C ± 1.00	Thread 6H	Misalign. Angle	Ult. Radial Static Load Cap. (Newtons)	Approx. Brg. Wgt. (grams)
39N423	39N424	5	8	5.75	27	16.00	11	9	11.10	14	M5X.08	22	8,247	18
39N425	39N426	6	9	6.25	30	19.00	13	11	12.70	14	M6X1.0	23	11,895	25
39N427	39N428	8	12	8.00	36	22.25	16	14	15.88	17	M8X1.25	28	15,190	40
39N429	39N430	10	14	9.50	43	27.00	19	17	19.05	21	M10X1.5	26	22,750	80
39N431	39N432	12	16	10.75	50	30.00	22	19	22.23	24	M12X1.75	27	25,819	95
39N433	39N434	14	19	12.25	57	34.75	25	22	25.40	27	M14X2.0	30	35,214	160
39N435	39N436	16	21	12.75	64	38.00	27	22	28.58	33	M16X2.0	33	37,391	215





**METRIC
ROD
ENDS**

2-Piece Carbon Steel Rod Ends with Stud Configuration

Metal to Metal - Right & Left Hand Threads - Male & Female

Specifications

BALL

- 52100 Bearing Steel
- Heat Treated
- Hard Chrome Plated
- Precision Ground

BODY

- Carbon Steel
- Protective Coated for Corrosion Resistance

STUD

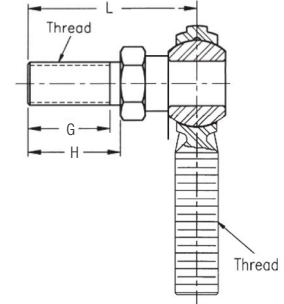
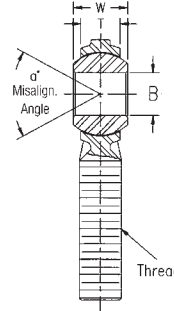
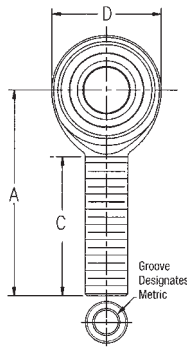
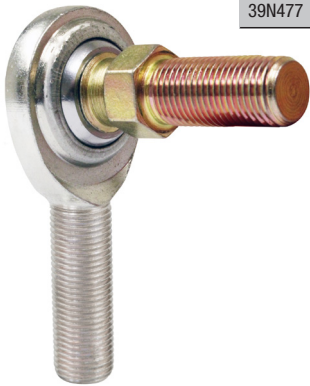
- Carbon Steel
- Protective Coated for Corrosion Resistance

ITEM NUMBER

DIMENSIONS IN MILLIMETERS

Male with Stud

Right Hand	Left Hand	B + .065 - 0.12	W ± .12	T Ref.	A ± .40	D Ref.	Ball Dia. Ref.	C ± 1.00	Thread 6H	Misalign. Angle	Approx. Brg. Wgt. (grams)	G Min.	H ±.13	L Ref.
39N465	39N466	5	8	5.75	33	16.00	11.10	20	M5X.08	22	12	10.0	13.0	27.26
39N467	39N468	6	9	6.25	36	19.00	12.70	22	M6X1.0	23	18	11.0	14.0	29.76
39N469	39N470	8	12	8.00	42	22.25	15.88	25	M8X1.25	28	31	14.0	17.5	36.76
39N471	39N472	10	14	9.50	48	27.00	19.05	29	M10X1.5	26	68	19.5	23.0	47.88
39N473	39N474	12	16	10.75	54	30.00	22.23	33	M12X1.75	27	78	24.5	28.5	57.38
39N475	39N476	14	19	12.25	60	34.75	25.40	36	M14X2.0	30	118	29.0	33.0	64.50
39N477	39N478	16	21	12.75	66	38.00	28.58	40	M16X2.0	33	173	34.0	38.0	74.00

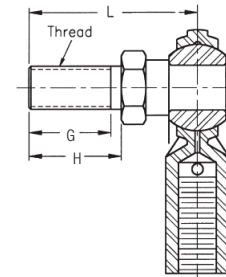
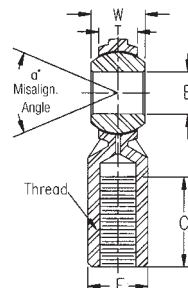
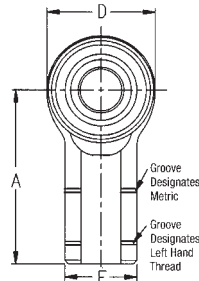


ITEM NUMBER

DIMENSIONS IN MILLIMETERS

Female with Stud

Right Hand	Left Hand	B + .065 - .012	W ± .12	T Ref.	A ± .40	D Ref.	E ± .25	F ± .25	Ball Dia. Ref.	C ± 1.00	Thread 6H	Misalign. Angle	Approx. Brg. Wgt. (grams)	G Min.	H ±.13	L Ref.
39N451	39N452	5	8	5.75	27	16.00	11	9	11.10	14	M5X.08	22	18	10.0	13.0	27.26
39N453	39N454	6	9	6.25	30	19.00	13	11	12.70	14	M6X1.0	23	25	11.0	14.0	29.76
39N455	39N456	8	12	8.00	36	22.25	16	14	15.88	17	M8X1.25	28	40	14.0	17.5	36.76
39N457	39N458	10	14	9.50	43	27.00	19	17	19.05	21	M10X1.5	26	80	19.5	23.0	47.88
39N459	39N460	12	16	10.75	50	30.00	22	19	22.23	24	M12X1.75	27	95	24.5	28.5	57.38
39N461	39N462	14	19	12.25	57	34.75	25	22	25.40	27	M14X2.0	30	160	29.0	33.0	64.50
39N463	39N464	16	21	12.75	64	38.00	27	22	28.58	33	M16X2.0	33	215	34.0	38.0	74.00



AVAILABLE THROUGH

GRAINGER

FOR THE ONES WHO GET IT DONE