

KS62, KS64

GRIPPER-FRONT SPUN POLYESTER BUTCHER COAT



BLEND: 100% Spun Polyester

CARE: Industrial Wash

CLOSURE: Six grippers

COLLAR: One-piece, notched lapel

LENGTH: 44.75" (based on size medium - back)

OTHER:

- Side-vent openings
- Men's Fit Chart: MFC-12

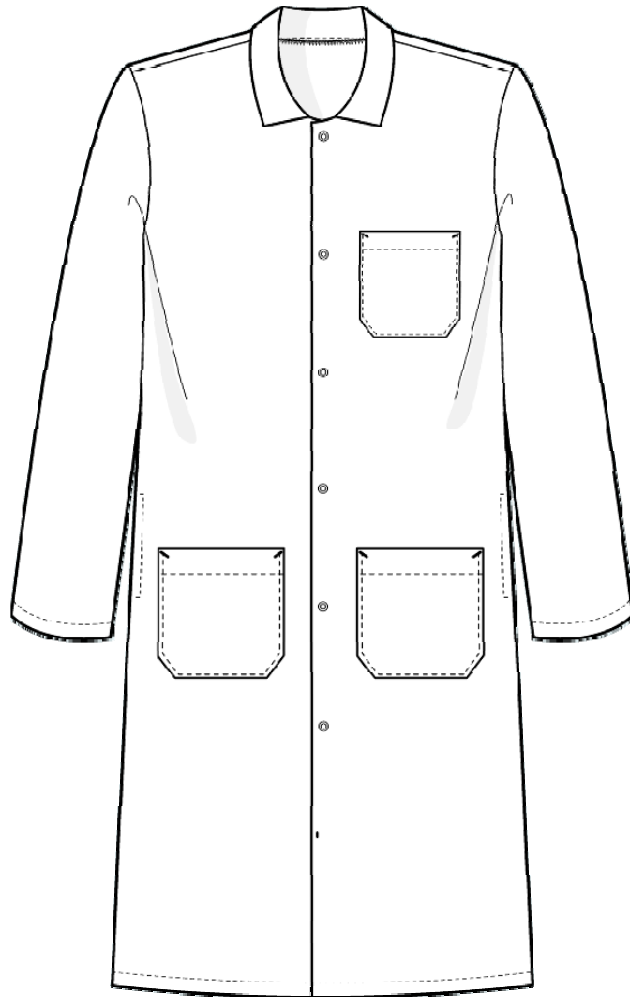
POCKET: KS62 - One exterior left chest pocket, two lower exterior pockets
KS64 - One interior left chest pocket, two lower exterior pockets

KS62WH
KS64WH
White



KS62, KS64

GRIPPER-FRONT SPUN POLYESTER BUTCHER COAT



CLOSURE Grippers on front meet food processing regulations.
BENEFIT:

FABRIC 100% Poly provides excellent wear and holds up through all
BENEFIT: wash cycles.

OTHER Side vent openings allow access to garments underneath.
BENEFIT:

POCKET Hex pockets prevent redeposition of dirt while angled bartacks
BENEFIT: add strength.

KS64 offers an interior chest pocket meeting food processing regulations and keeping items secure and out of sight.