

Responsible Cleaning



*Industrial Floor Care for the
Environmentally Conscious Company*

by the O'Dell Corporation



v. 3



Environmental Impact based on 2,113 ISSA® Distributor members

If 2,113 ISSA distributor members bought and sold 120 large EchoMops and 72 twenty-four inch Echo Dust Mops per month, it would have the following environmental impact annually.

Below figures have been converted to barrels of oil and gallons of gas to easily show total energy savings.

Impact on landfill space

- 36,208,368 16 oz. bottles excluded from landfills. That is 3,620,836 pounds of plastic bottles.

Impact on energy consumption

- Energy savings = 982,882 gallons of gas. That's enough gas for one car to travel around the Earth 982 times at the equator.
- 121,924 MMBtu which is equivalent energy savings to provide 59,535 hours of continuous lighting to an average US home.

Impact on GHG (Green House Gas)

- Eliminates 4,159 metric tons of Greenhouse Gas, the equivalent of removing 900 cars from the highway annually.

All conversion formulas and energy savings calculations were taken from the EPA government website.



PET Points to Consider

- 3.8 billion pounds of PET bottles were landfilled in 2009. 1.4 billion pounds were recycled
- Since 1995 PET waste has increased 300%.
- There are currently 3 tons of PET wasted for every ton recycled.
- It takes 500-2000 years for PET to breakdown in landfills.
- Eight 16 ounce PET bottles can make 1 sq.ft. of polyester carpet, 1 x-large t-shirt, 2 baseball caps, or one large mophead.



What can Responsible Cleaning do for your company?

Downsize — Waste disposal.

With O'Dell's **Rewind Mop Recycling Program**, used mops can be returned to O'Dell via distributors to be recycled.

Maximize — Cleaning tool dollars.

FiberTac® cut end mops last 3X longer than conventional cut end products. EchoBrooms® have reusable handles & replaceable heads. Sterling® antimicrobial mops inhibit bacterial growth for longer service.

Upsize — Green Awareness.

Why have an ordinary mop handle when you can use a handle made from recycled car battery casings?

Minimize — Environmental impact.

Renewable Bamwood® handles can replace traditional handles made from rainforest hardwoods, metals and fiberglass. EchoMops® contain Earthspun® yarn, made from post-consumer recycled PET plastic bottles.



Echoline® Products

- Sterling Plus Antimicrobial Wet Mops
- Echo Mop 1200 Series
- Echo Mop 1400 Series
- FiberTac® Cut End Wet Mops
- New Edge Nonwoven Wet Mops
- Echo Shine Finish Mops
- Echo Dust Mops
- Echo Advantage Dust Mops
- Biofiber Dry Sheets
- Echo Brooms
- Recycled Plastic Wet Mop Handles
- Bamwood Handles

Performance Driven Green Cleaning Is Here

EchoLine® has quickly become the first choice for the environmentally conscious company, and for good reasons:

- EchoLine® is the most comprehensive line of green floor cleaning tools in the industry.
- All EchoLine® products contain recyclable and renewable materials that greatly reduce waste product production.
- EchoLine® meets or exceeds Executive Order 13423 mandating Government Agencies purchase biobased, environmentally preferable, energy efficient and recycled content products—opening new sales opportunities.

Discover the future of green cleaning today, with O'Dell's EchoLine®.

Green cleaning calls for a critical balance - between new technology and conventional wisdom, between short-term and long-term environmental benefits, and between effectiveness and cost. One concern of scientists with synthetic antibiotics and antimicrobials has been the development of resistant strains of bacteria. Silver and copper ion treatment is a safe alternative to synthetic antimicrobials, because the agent remains in the mop and does not leach out into the environment. The Sterling Plus® series is constructed of silver and copper treated rayon/synthetic fibers. Sterling Plus® antimicrobial loop mops would be ideal for the commercial laundry rental market, for food service, healthcare, and for all Jan/San applications.

Mop Performance Points

- Silver and copper have been known for centuries for their natural antimicrobial properties
- Mop fibers are treated with silver and copper ion based antimicrobial agent, FOSSHIELD®
- FOSSHIELD® protects the mophead from bacterial and fungal growth which inhibits yarn degradation and offensive odors, extending service life
- Non leaching silver agent does not wash out into the environment
- Helpful to textile rental companies following LaundryESP, or Laundry Environmental Stewardship programs

Yarn colors available- Blue, Green, Orange, White



PRODUCT NO.	PRODUCT DESCRIPTION	CS. PK.	CS. WT.	CS. CB.
4200S	Small Antimicrobial Looped End Wet Mop - Sterling Plus®	12	10	0.98
4200M	Medium Antimicrobial Looped End Wet Mop - Sterling Plus®	12	13.5	1.45
4200L	Large Antimicrobial Looped End Wet Mop - Sterling Plus®	12	18	1.67
4200XL	X-Large Antimicrobial Looped End Wet Mop - Sterling Plus®	12	22.5	2.22

EchoMop 1200 Series

The first and still the best.




In today's ever changing environment, people world wide are looking for opportunities to contribute to the cumulative effort of improving the current state of Earth's ecosystem. One such effort is the use of engineered fibers produced entirely from recycled materials, which include reclaimed components such as cotton and PET plastic bottles. By incorporating recycled PET plastics into new, usable goods we can effectively diminish waste going into our landfills while also conserving the raw natural resources that would otherwise be used for the same purpose.

1200 Series Performance

- Absorbs over 4.4 times its weight in water
- Releases almost 30% upon wringing
- Over 20% better performance than competitive all-synthetic wet mop yarns
- Dries amazingly fast – 90% dry after only the spin cycle of the washer
- Air dries 100% overnight
- Much longer lasting and lower linting than competitive yarns
- Less than half the weight loss in laundry than competitive yarns
- Composed of Earthspun® yarn, which is 30% post consumer and 67% post industrial material
- Free from post recycling dyes



PRODUCT NO.	PRODUCT DESCRIPTION		CS. PK.	CS. WT.	CS. CB.
1200S	Small 4-ply ray/syn wide band looped end EchoMop	4.5	12	10	.98
1200M	Medium 4-ply ray/syn wide band looped end EchoMop	6	12	13.5	1.45
1200L	Large 4-ply ray/syn wide band looped end EchoMop	8	12	18	1.67
1200XL	X-Large 4-ply ray/syn wide band looped end EchoMop	10.5	12	22.5	2.22

Yarn color example: 1200L/Brown

Yarn colors available - water bottle blue, beer bottle brown, soda bottle green, beverage bottle white

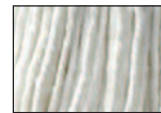
EchoMop 1400 Series




As with all Echo yarn products the 1400 series yarn fibers are free from Post recycling dyes. The yarn colors of Echo products are wholly derived from the original dyes of the recycled PET. Cotton content gives this yarn blend a high level of absorption but also increases the product's moisture retention over that of all synthetic blends. A continued example of how EchoLine products can hold their own.

1400 Series Performance

- Absorbs 4.1 times it's weight in water
- Releases 22% upon wringing
- Premium loop mop performance
- Faster drying than similar competitive yarn blends
- Less linting and weight loss in laundry
- Composed of Earthspun® yarn, which is 30% post consumer and 67% post industrial recycled material
- Free from post recycling dyes



PRODUCT NO.	PRODUCT DESCRIPTION		CS. PK.	CS. WT.	CS. CB.
1400S	Small 4-ply cot/ray/syn wide band looped end EchoMop	4.5	12	10	0.98
1400M	Medium 4-ply cot/ray/syn wide band looped end EchoMop	6	12	13.5	1.45
1400L	Large 4-ply cot/ray/syn wide band looped end EchoMop	8	12	18	1.67
1400XL	X-Large 4-ply cot/ray/syn wide band looped end EchoMop	10.5	12	22.5	2.22

Yarn color example: 1400L/Brown

Yarn colors available - water bottle blue, beer bottle brown, soda bottle green, beverage bottle white

FiberTac® Cut End Wet Mops



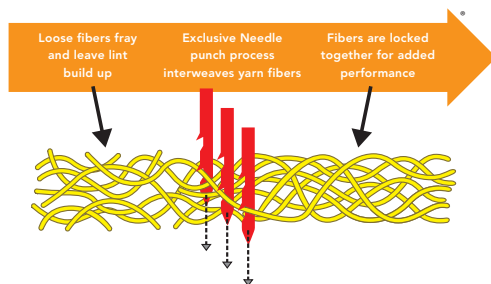
O'Dell broadens its line of environmentally friendly wet mopping products with FiberTac® Cut End Wet Mops. Made from 100% recycled fiber content, FiberTac® yarns deliver ultimate green cleaning performance. The exclusive, patented needle punch process actually interlocks the yarn strands, which produces longer lasting, more efficient, faster working mops. These mops virtually eliminate the additional “linting” caused by conventional cotton products, which reduces time, labor and associated cleaning costs.

FiberTac® Wet Mop Performance

- Made from 100% recycled, cotton/synthetic blend fibers for earth friendly cleaning
- Exclusive interlocking fiber process provides increased durability with less linting than cotton ...lasts up to 3 times longer. Ideal for mopping anti-skid floors
- Quicker water absorption, faster floor drying and less break in time means more efficient cleaning with less labor costs
- With proper care these cut end mop heads can be fully laundered with much less shrinkage than competitive yarns
- Attractive blue color also camouflages soiling for longer use



US Patent # 6,311,375B1



PRODUCT NO.	PRODUCT DESCRIPTION	CS. PK.	CS. WT.	CS. CB.
8016F/Blue-FT	16 oz. blue 4-ply cotton narrow band FiberTac mop	12	12	1.59
8020F/Blue-FT	20 oz. blue 4-ply cotton narrow band FiberTac mop	12	15	1.59
8024F/Blue-FT	24 oz. blue 4-ply cotton narrow band FiberTac mop	12	18	1.59
8032F/Blue-FT	32 oz. blue 4-ply cotton narrow band FiberTac mop	12	24	2.37
8016F/BlueWB-FT	16 oz. blue 4-ply cotton wide band FiberTac mop	12	12	1.59
8020F/BlueWB-FT	20 oz. blue 4-ply cotton wide band FiberTac mop	12	15	1.59
8024F/BlueWB-FT	24 oz. blue 4-ply cotton wide band FiberTac mop	12	18	1.59
8032F/BlueWB-FT	32 oz. blue 4-ply cotton wide band FiberTac mop	12	24	2.37



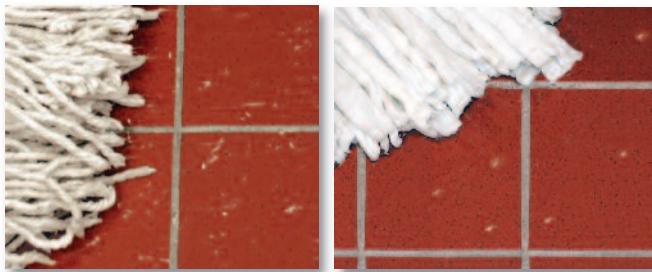
The New Edge Nonwoven Wet Mop

Control cleaning costs — with a higher quality, lower cost alternative to cotton cut end mops

Produced from 100% post industrial material, the new Edge Mop is made from recycled rayon / synthetic nonwoven edge trim. Compared to cotton, this material exhibits 70% greater absorption and 45% greater liquid release, giving the same mopping results with less fiber. The Edge mop is more economical than cotton, will not unravel, leaves less lint, and requires no break-in time. The Edge mop is ideal for wax stripping, disinfecting, quick spill pick-up, and general purpose cleaning. The EDGE Mop can offer you a better, more economical green product, while raising your product quality to a higher level.

- › 70% greater absorption than cotton
- › 45% greater liquid release
- › More economical than cotton
- › Reduced linting
- › Immediate absorption
- › 100% post - industrial nonwoven edge trim
- › Made in the USA

by O'Dell
EDGE



Cotton mop on non-skid floor

VS.

Edge mop on non-skid floor

Choose the correct size mop! If you currently use cotton cut end mops, see table for reference.

TRADITIONAL COTTON	EDGE EQUIVALENT ITEM NUMBER	DESCRIPTION	CS. PK.	CS. WT.	CS. CB.
12 oz.	BW306	Small Rayon/Poly Nonwoven Looped End Wet Mop	12	5	1.09
16 oz.	BW308	Medium Rayon/Poly Nonwoven Looped End Wet Mop	12	6.5	1.59
24 oz.	BW312	Large Rayon/Poly Nonwoven Looped End Wet Mop	12	9.5	1.59
32 oz.	BW316	X- Rayon/Poly Nonwoven Looped End Wet Mop	12	6.5	2.37
12 oz.	BW612	#12 Edge Rayon/Poly Nonwoven Cut End Wet Mop	12	5	1.09
14 oz.	BW714	#14 Edge Rayon/Poly Nonwoven Cut End Wet Mop	12	5.75	1.09
16 oz.	BW816	#16 Edge Rayon/Poly Nonwoven Cut End Wet Mop	12	6.5	1.59
18 oz.	BW918	#18 Edge Rayon/Poly Nonwoven Cut End Wet Mop	12	7.25	1.59
20 oz.	BW1020	#20 Edge Rayon/Poly Nonwoven Cut End Wet Mop	12	8	1.59
24 oz.	BW1224	#24 Edge Rayon/Poly Nonwoven Cut End Wet Mop	12	9.5	1.59
32 oz.	BW1632	#32 Edge Rayon/Poly Nonwoven Cut End Wet Mop	12	12.5	2.37

EchoShine® Finish Mops



EchoShine® finish mops are the most environmentally friendly finish mops available in our industry. These mops are composed of unique yarn blends wholly comprised of recycled fibers and provide all of the desired characteristics of premium finish application mopheads. Whether it be the rayon-P.E.T. blend or the 100% P.E.T. style you can be assured of a lint free, streak free shine.

1700 Series Characteristics

- 66% recycled post consumer P.E.T.
- 34% recycled post industrial rayon
- Very low lint
- Steady, even release
- Green & white stripe designates EchoShine® finish mop
- 6-ply hygrade fiber blend



1700 Series




Flat Mop

77 Series

77 Series Characteristics

- 100% recycled post consumer P.E.T.
- Extremely low linting
- Rapid, smooth release
- Very low drag
- 6-ply long staple poly fiber yarn

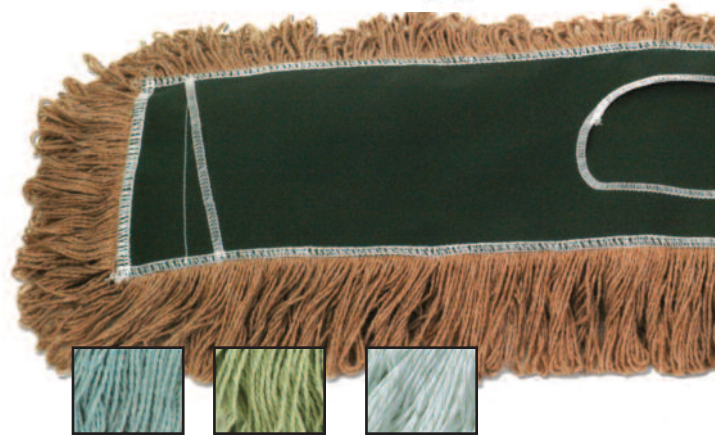



PRODUCT NO.	PRODUCT DESCRIPTION		CS. PK.	CS. WT.	CS. CB.
1700S	Small rayon - P.E.T. EchoShine® finish mop	9	12	10	1.09
1700M	Medium rayon - P.E.T. EchoShine® finish mop	12	12	13.5	1.59
1700L	Large rayon - P.E.T. EchoShine® finish mop	16	12	18	1.85
1700XL	X-Large rayon - P.E.T. EchoShine® finish mop	21	12	22.5	2.37
771S	Small - 100% P.E.T. EchoShine® finish mop	15	12	7.5	1.09
772M	Medium - 100% P.E.T. EchoShine® finish mop	20	12	13.5	1.59
773L	Large - 100% P.E.T. EchoShine® finish mop	24	12	18	1.85
774XL	X-Large - 100% P.E.T. EchoShine® finish mop	30	12	22.5	2.37
FMG185	5 x 18 rayon - P.E.T. EchoShine® flat finish mop	5.5	12	7.5	1.09
FMG245	5 x 24 rayon - P.E.T. EchoShine® flat finish mop	6.3	12	15	1.59
FMP185	5 x 18 - 100% recycled P.E.T. EchoShine® flat finish mop	8	12	7.5	1.09
FMP245	5 x 24 - 100% recycled P.E.T. EchoShine® flat finish mop	9.5	12	15	1.59

In addition to wet mopping products O'Dell also offers a complete line of Earth friendly dust mops. These dust mops are manufactured using 100% recycled PET backing material combined with high quality Earthspun® yarns. Available in heat set cut end or non-heat set looped end styles to meet the most demanding of dust mopping needs. When coupled with the Echo line wet mops and bamboo handles the environmental advantages are magnified in a very beneficial way.

Dust Mop Performance

- Looped ends or heat set construction provide longevity and excellent laundering performance
- High quality synthetic content increases abrasion resistance
- Slot pocket design facilitates fast and easy changes
- Dries amazingly fast- 90% after only the spin cycle
- Much longer lasting and lower linting than competitive yarns
- Less than half the weight loss in laundry than competitive yarns
- Earthspun® Yarn composed of 30% post consumer and 67% post industrial recycled material
- Backing composed of 100% post consumer plastic material



PRODUCT NO.		PRODUCT DESCRIPTION		CS. PK.	CS. WT.	CS. CB.
ECHO185L	LOOPED END	5 x 18 Looped end Echo dust mop refill-slot pocket	5.5	12	11	1.09
ECHO245L		5 x 24 Looped end Echo dust mop refill-slot pocket	6.5	12	13	1.59
ECHO365L		5 x 36 Looped end Echo dust mop refill-slot pocket	8.5	12	17	1.85
ECHO485L		5 x 48 Looped end Echo dust mop refill-slot pocket	11	12	22	2.37
ECHO605L		5 x 60 Looped end Echo dust mop refill-slot pocket	13.5	3	9	0.76
ECHO725L		5 x 72 Looped end Echo dust mop refill-slot pocket	16	3	12	0.76
ECHO185	CUT END	5 x 18 Heat set, cut end Echo dust mop refill-slot pocket	5.5	12	11	1.09
ECHO245		5 x 24 Heat set, cut end Echo dust mop refill-slot pocket	6.5	12	13	1.59
ECHO365		5 x 36 Heat set, cut end Echo dust mop refill-slot pocket	8.5	12	17	1.85
ECHO485		5 x 48 Heat set, cut end Echo dust mop refill-slot pocket	11	12	22	2.37
ECHO605		5 x 60 Heat set, cut end Echo dust mop refill-slot pocket	13.5	3	9	0.76
ECHO725		5 x 72 Heat set, cut end Echo dust mop refill-slot pocket	16	3	12	0.76

For backing color choice add color indication suffix to item number. Blue -BB, Green -GB, Orange -OB, Red -RB, White -WB, Yellow -YB. Standard backing color is yellow if not otherwise indicated. Yarn colors available - water bottle blue, beer bottle brown, soda bottle green, beverage bottle white

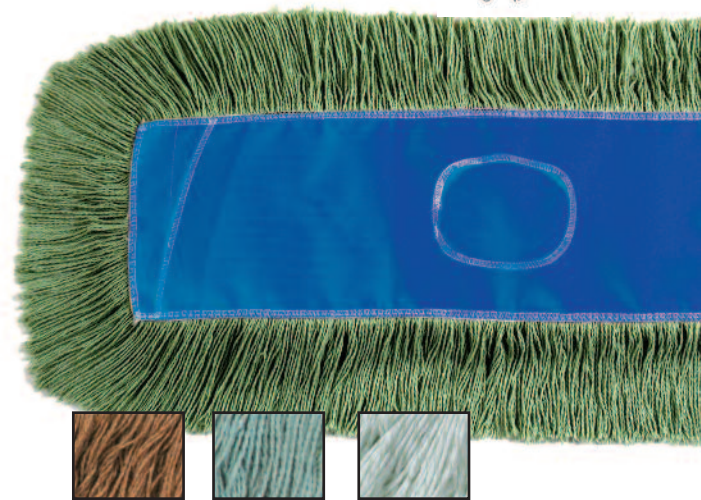
Echo Advantage® - Dustmop




The Echo Advantage line of dustmops have all of the characteristics and benefits of our standard heat set, cut end Echo Dustmop with the added advantage of microfiber. Micro denier fibers are blended into the Earthspun® yarn enhancing its dust capturing ability. The Echo Advantage combines recycling and microfiber to deep clean the environment in more ways than one.

Advantage Performance

- Microfiber enhanced dust capturing
- Heat set construction provides longevity and excellent laundering performance
- High quality synthetic content increases abrasion resistance
- Slot pocket design facilitates fast and easy changes
- Dries amazingly fast- 90% after only the spin cycle
- Much longer lasting and lower linting than competitive yarns
- Less than half the weight loss in laundry than competitive yarns
- Earthspun® yarn composed of 30% post consumer and 67% post industrial recycled material
- Backing composed of 100% post consumer plastic material



PRODUCT NO.	PRODUCT DESCRIPTION		CS. PK.	CS. WT.	CS. CB.
EA185GSP	5 x 18 EchoAdvantage, Heat Set Cut End Dustmop refill-slot pocket	5.5	12	11	1.09
EA245GSP	5 x 24 EchoAdvantage, Heat Set Cut End Dustmop refill-slot pocket	6.5	12	13	1.59
EA365GSP	5 x 36 EchoAdvantage, Heat Set Cut End Dustmop refill-slot pocket	8.5	12	17	1.85
EA485GSP	5 x 48 EchoAdvantage, Heat Set Cut End Dustmop refill-slot pocket	11	12	22	2.37
EA605GSP	5 x 60 EchoAdvantage, Heat Set Cut End Dustmop refill-slot pocket	13.5	3	9	0.76
EA725GSP	5 x 72 EchoAdvantage, Heat Set Cut End Dustmop refill-slot pocket	16	3	12	0.76

For backing color choice add color indication suffix to item number. Blue -BB, Green -GB, Orange -OB, Red -RB, White -WB, Yellow -YB. Standard backing color is blue if not otherwise indicated. Yarn colors available - water bottle blue, beer bottle brown, soda bottle green, beverage bottle white

Problem Disposable wipes are the largest component of the "use-and-toss" trend sweeping the cleaning industry in North America. 83,000 tons of wipes are sent to landfills every year.

Solution BioFiber Dry Dusting Sheets biodegrade into a small amount of inert material, less than 1 oz., after just 6 weeks in a compost pile or landfill.



Biofiber sheet after 6 weeks



BioFiber is an environmentally preferable dry cleaning tool that provides solutions to many of your green cleaning challenges. BioFiber is disposable and biodegradable, so it eliminates the need for costly laundering. It is extremely effective in removing dust and dirt particles in a dry application, reducing the need for water and chemicals. Its lightweight design diminishes worker fatigue, increases efficiency and reduces labor costs.

Take advantage of an effective, cost saving, disposable, biodegradable cleaning product without the negative environmental impact — BioFiber.



- Disposable
- Biodegradable
- Extremely efficient
- Economical
- Operator-friendly, lightweight
- Microscopic pick up



Easy to use

- BioFiber is the perfect disposable dusting sheet for your green cleaning program.
- Electrostatically charged mop fibers draw and lock in dust and dirt, a powerful weapon against cross contamination in health care environments.
- Independent laboratory tests in Europe show that BioFiber picks up 95-98% of bacteria without chemicals
- BioFiber Mop Sheets deliver twice the pick up efficiency of the leading sweeper brand.
- Improves indoor air quality in all spaces including: hospitals, office buildings, classrooms and retail venues.
- Utilizes specially formulated, very long and densely flowing fiber technology across entire mop face.
- Used sheets can be safely disposed or used in traditional composting methods, greatly reducing potential landfill waste.
- The product is independently tested and proven for biodegradability in accordance with ASTM D6400-99 standard.

PRODUCT NO.	PRODUCT DESCRIPTION	CS. PK.	CS. WT.	CS. CB.
BF248	8 x 24" Biofiber sheets	200	4.9	1.2
BF100	100 sheet Biofiber roll	4	11.0	2.7
SCF244	4 x 24" padded spring clip frame	6	6.8	0.97
SCF484	4 x 48" padded spring clip frame	6	13.6	2.37
TH-BF60	40-60" telescopic handle	6	3	0.38

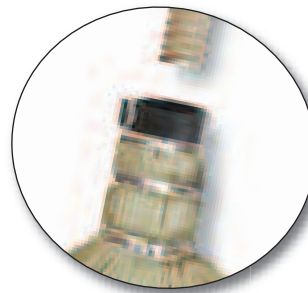
Taking environmentally friendly cleaning beyond mops, O'Dell provides a core offering of upright EchoBrooms®. These brooms use all natural, undyed, corn and yucca fibers, which are stitched and using 100% cotton twine. The recycled plastic threaded insert accepts a reusable standard threaded bamwood handle further enhancing its environmental impact. All of these materials will withstand the most demanding of tasks. The EchoBroom® is the leading edge in sustainable sweeping.

EchoBroom® Characteristics

- 100% Corn or Corn & Fiber blend -all natural broom fibers are free from dyes.
- Broom heads are replaceable – all come with a recycled plastic threaded part, which allows EchoBroom head to be changed.
- Environmentally friendly, highly durable, 100% cotton twine stitching.
- Reusable Bamwood® handle available in 15/16" diameter for light duty, and 1 1/8" for heavy duty applications.

EchoBroom
by O'Dell

Handles Made Of
Bamwood
By O'Dell



PRODUCT NO.	PRODUCT DESCRIPTION	HANDLE	CS. PK.	CS. WT.	CS. CB.
EBA11001	#32 100% Corn Warehouse EchoBroom®	1 1/8"	6	16	2.51
EBA12001	#32 Corn/fiber Warehouse EchoBroom®	1 1/8"	6	16	2.51
EBA11001-H	#32 100% Corn Warehouse EchoBroom® - Head Only	NA	12	20.2	3.74
EBA12001-H	#32 Corn/fiber Warehouse EchoBroom® - Head Only	NA	12	20.2	3.74
EBC00051	#20 100% Corn Household EchoBroom®	15/16"	12	20	3.46
EBC00001	#20 Corn/fiber Household EchoBroom®	15/16"	12	20	3.46
EBC00051-H	#20 100% Corn Household EchoBroom®- Head Only	NA	12	16.7	3.74
EBC00001-H	#20 Corn/fiber Household EchoBroom®- Head Only	NA	12	16.7	3.74
0639BW	Threaded & tenoned bamwood warehouse EchoBroom handle	1 1/8"	12	9.9	0.76
0342BW	Threaded bamwood household EchoBroom handle	15/16"	12	8.6	0.76

Another opportunity for ecological improvement is the use of bamboo products in place of hardwoods. Bamboo can effectively and reliably perform in many areas where hardwoods have traditionally been used such as in the production of stick goods for the cleaning industry.

Bamboo Characteristics

- Grows one third faster than the fastest growing tree
- Releases 35% more oxygen than an equivalent stand of hardwoods
- Is harvested with no impact to the environment
- Capable of complete regeneration without replanting
- Can be harvested every 3-5 years versus 8-10 years for rattan and 10-20 years for most soft woods
- One of the strongest natural materials



C-8PBWRP
100% recycled plastic



C-14BWRP
100% recycled plastic

100% Recycled Plastic Wet Mop Handles

Our two most popular mop handles are also available with 100% recycled plastic heads. Plastic for these parts has been derived from car battery casings.



Bamwood® Handles



PRODUCT NO.	PRODUCT DESCRIPTION	CS. PK.	CS. WT.	CS. CB.
C-8BW	1 1/8 x 54 metal stirrup wet mop handle	12	26	2.86
C-8PBW	1 1/8 x 54 plastic quick change wet mop handle	12	27	2.86
C-8PBWRP	1 1/8 x 54 recycled plastic quick change wet mop handle	12	27	2.86
C-9BW	1 1/8 x 54 metal quick change wet mop handle	12	27	2.86
C-14BW	1 1/8 x 54 jaws mate wet mop handle	12	20	2.86
C-14BWRP	1 1/8 x 54 recycled jaws mate wet mop handle	12	20	2.86
<hr/>				
H600BW	15/16 x 60 clip-on dust mop handle	12	20	1.54
<hr/>				
0754BW	15/16 x 54 tapered handle	12	11	.50
0760BW	15/16 x 60 tapered handle	12	12	.56
0854BW	1 1/8 x 54 tapered handle	12	13	.55
0860BW	1 1/8 x 60 tapered handle	12	14	.61
<hr/>				
0354BW	15/16 x 54 threaded handle	12	11	.50
0360BW	15/16 x 60 threaded handle	12	12	.56
0554BW	1 1/8 x 54 threaded handle	12	13	.55
0660BW	1 1/8 x 60 threaded handle	12	14	.61
<hr/>				
0454BW	15/16 x 54 metal threaded handle	12	11	.50
0160BW	15/16 x 60 metal threaded handle	12	12	.56
0954BW	1 1/8 x 54 metal threaded handle	12	13	.55
0960BW	1 1/8 x 60 metal threaded handle	12	14	.61

The handles listed above are constructed of 65% bamboo 35% reclaimed hardwood.



H600
Clip-on



Tapered



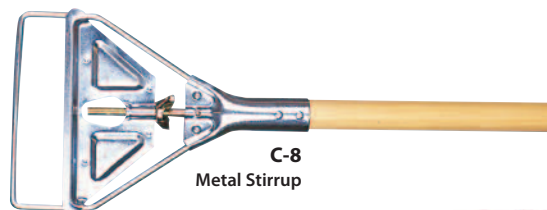
Threaded



Metal threaded



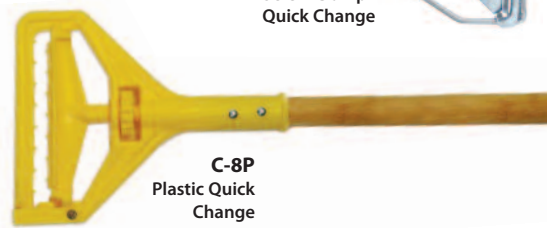
C-14
Jaws Mate



C-8
Metal Stirrup



C-9
Screw Clamp
Quick Change



C-8P
Plastic Quick
Change



Green Initiatives

At the O'Dell Corporation, sustainability, conservation, and preservation have been normal practices for many years. In 1995, with the establishment of a 1,000 acre tree farm, O'Dell embarked on the first of many green initiatives. In support of the South Carolina Waterfowl association, in the midst of new pines and hardwoods, O'Dell created wetlands to provide a safe and healthy growth environment for both resident and migratory waterfowl, and numerous other species. Our forestry program is certified under Mead Westvaco's CFM program and the Sustainable Forestry Initiative Program.

O'Dell has also created miles of marked hiking trails and campsites. These trails and sites are often used to nurture youth awareness of our environmental responsibilities. We do this in hopes that future generations might carry forward what they have learned.

More recently, we brought environmental stewardship into the manufacturing process. While recycling of corrugated and plastic materials has been practiced for some time, we now recycle textile waste, metal, used electronic parts, and fluorescent light bulbs as well. In our packaging process, we use non-petroleum, corn-based PLA film where available. PLA is biodegradable and compostable.

In February 2007, O'Dell began purchasing green power from Laurens County Electric Cooperative. We are proud to be the first South Carolina manufacturer to use 100% green power, and be registered as a "Green Power Partner" by LEC and by the EPA.

As more forward-thinking advancements which address environmental concerns are presented, O'Dell plans to take full advantage of new, sustainable opportunities.

Climate change is at the forefront of global issues. Companies worldwide are coordinating their efforts to improve conditions for the promise of a better tomorrow. Companies like O'Dell wish to provide our customers with greener products at fair prices to help them compete and also meet environmental commitments.

In 2008, O'Dell became the first company in our industry to be certified as a Carbon Neutral manufacturer by the Cleaning Industry Climate Initiative (CICI), and Leonardo Academy's Cleaner and Greener Program. The O'Dell Corporation will continue to play our part through environmentally sound practices in our manufacturing facilities and the world that surrounds it.



O'Dell Green Initiative Points to Consider

Energy — 100% green power partner, certified by the EPA and Laurens Electric Cooperative

Packaging — O'Dell uses only non-petroleum, corn-based PLA film in our process where available. PLA film is biodegradable and compostable.

Recycling — Recycling of manufacturing by-products – corrugated, plastic, paper and textiles.

Responsible Forest Management — O'Dell established a 1,000 acre tree farm, certified under Mead Westvaco's CFM program and the sustainable Forestry Initiative program.

Carbon Footprint — In 2008, O'Dell became the first in our industry to be certified as a Carbon Neutral manufacturer by the Cleaning Industry Climate Initiative (CICI), and Leonardo Academy's Cleaner & Greener program.

Environmental Climate Change Initiatives

- O'Dell recycled 69 tons of cardboard in 2007– enough to save 1,300 trees.
- Annually, we recycle 50,000 lbs of plastic and 100,000 lbs of textile waste.
- Our tree farm removes 3,600 tons of CO2 and produces 4,000 tons of oxygen annually, enough for 16,200 people.
- 10 acres of enhanced wetlands have produced thousands of waterfowl hatches and provided habitat for numerous other species of wildlife

The O'Dell Corporation
P.O. Box 540, Ware Shoals, SC 29692
www.odellcorp.com
1-800-342-2843



Please recycle this catalog