



**ROD  
ENDS**

# Injection Molded Carbon Steel Rod Ends

Nylon Self-Lubricating Race - Right & Left Hand Threads - Male & Female  
**C O M M E R C I A L**

## Specifications

### BALL

- 52100 Bearing Steel
- Heat Treated
- Hard Chrome Plated
- Precision Ground

### RACE

- Reinforced Nylon 12 with PTFE

### BODY

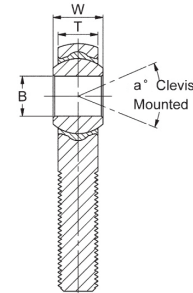
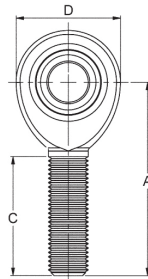
- Carbon Steel
- Protective Coated for Corrosion Resistance

### ITEM NUMBER

### DIMENSIONS IN INCHES

## Male

Right Hand	Left Hand	B + .0025 - .0005	W ± .005	T ± .005	A ± .015	D ± .010	Ball Dia. Ref.	C + .062 - .031	Thread UNF-3A	Misalign. Angle a°	Ult. Radial Static Load Lbs.	Approx. Brg. Wgt. Lbs.
20F911	20F912	0.1900	0.312	0.250	1.250	0.625	0.437	0.750	10-32	13	1,210	0.02
20F913	20F914	0.2500	0.375	0.281	1.562	0.750	0.500	1.000	1/4-28	16	2,470	0.04
20F915	20F916	0.3125	0.437	0.344	1.875	0.875	0.625	1.250	5/16-24	14	2,740	0.07
20F917	20F918	0.3750	0.500	0.406	1.938	1.000	0.719	1.250	3/8-24	12	4,210	0.11
20F919	20F920	0.4375	0.562	0.437	2.125	1.125	0.812	1.375	7/16-20	14	5,350	0.15
20F921	20F922	0.5000	0.625	0.500	2.438	1.312	0.937	1.500	1/2-20	12	6,430	0.23
20F923	20F924	0.6250	0.750	0.562	2.625	1.500	1.125	1.625	5/8-18	16	8,300	0.36
20F925	20F926	0.7500	0.875	0.687	2.875	1.750	1.312	1.750	3/4-16	14	10,900	0.57

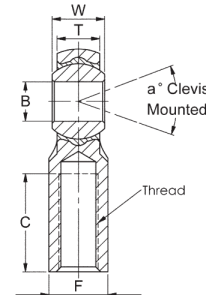
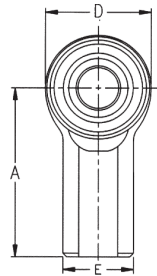


### ITEM NUMBER

### DIMENSIONS IN INCHES

## Female

Right Hand	Left Hand	B + .0025 - .0005	W ± .005	T ± .005	A ± .015	D ± .010	E ± .010	F ± .010	Ball Dia. Ref.	C + .062 - .031	Thread UNF-2B	Misalign. Angle a°	Ult. Radial Static Load Lbs.	Approx. Brg. Wgt. Lbs.
20F894	20F895	0.1900	0.312	0.250	1.062	0.625	0.406	0.312	0.437	0.562	10-32	13	1,210	0.04
20F896	20F897	0.2500	0.375	0.281	1.312	0.750	0.469	0.375	0.500	0.750	1/4-28	16	2,470	0.06
20F898	20F899	0.3125	0.437	0.344	1.375	0.875	0.500	0.437	0.625	0.750	5/16-24	14	2,740	0.08
20F901	20F902	0.3750	0.500	0.406	1.625	1.000	0.687	0.562	0.719	0.937	3/8-24	12	4,100	0.14
20F903	20F904	0.4375	0.562	0.437	1.812	1.125	0.750	0.625	0.812	1.062	7/16-20	14	5,350	0.19
20F905	20F906	0.5000	0.625	0.500	2.125	1.312	0.875	0.750	0.937	1.187	1/2-20	12	6,430	0.31
20F907	20F908	0.6250	0.750	0.562	2.500	1.500	1.000	0.875	1.125	1.500	5/8-18	16	8,300	0.45
20F909	20F910	0.7500	0.875	0.687	2.875	1.750	1.125	1.000	1.312	1.750	3/4-16	14	10,900	0.67





**ROD  
ENDS**

# Injection Molded Carbon Steel Rod Ends with Stud Configuration

Nylon Self-Lubricating Race - Right & Left Hand Threads - Male & Female

## Specifications

### BALL

- 52100 Bearing Steel
- Heat Treated
- Hard Chrome Plated
- Precision Ground

### RACE

- Reinforced Nylon 12 with PTFE

### BODY

- Carbon Steel
- Protective Coated for Corrosion Resistance

### STUD

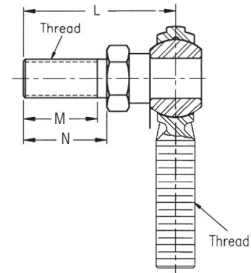
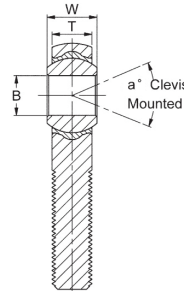
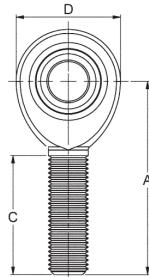
- Carbon Steel
- Protective Coated for Corrosion Resistance

### ITEM NUMBER

### DIMENSIONS IN INCHES

## Male with Stud

Right Hand	Left Hand	B + .0025 - .0005	W ± .005	T ± .005	A ± .015	D ± .010	Ball Dia. Ref.	C + .062 - .031	Thread UNF-3A	Misalign. Angle a°	Approx. Brg. Wgt. Lbs.	L Ref.	N ± .010	M Ref.
20F943	20F944	0.1900	0.312	0.250	1.250	0.625	0.437	0.750	10-32	13	0.03	1.000	0.500	0.437
20F945	20F946	0.2500	0.375	0.281	1.562	0.750	0.500	1.000	1/4-28	16	0.06	1.031	0.562	0.500
20F947	20F948	0.3125	0.437	0.344	1.875	0.875	0.625	1.250	5/16-24	14	0.11	1.219	0.687	0.593
20F949	20F950	0.3750	0.500	0.406	1.938	1.000	0.719	1.250	3/8-24	12	0.16	1.562	0.906	0.812
20F951	20F952	0.4375	0.562	0.437	2.125	1.125	0.812	1.375	7/16-20	14	0.24	1.750	1.062	0.937
20F953	20F954	0.5000	0.625	0.500	2.438	1.312	0.937	1.500	1/2-20	12	0.36	2.000	1.125	1.000
20F955	20F956	0.6250	0.750	0.562	2.625	1.500	1.125	1.625	5/8-18	16	0.61	2.500	1.500	1.375
20F957	20F958	0.7500	0.875	0.687	2.875	1.750	1.312	1.750	3/4-16	14	1.02	3.000	1.812	1.625

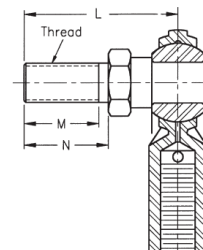
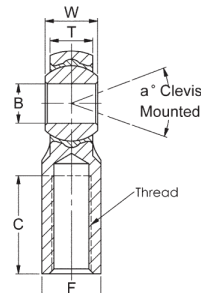
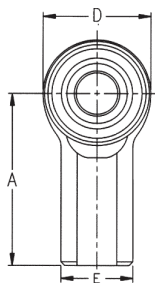


### ITEM NUMBER

### DIMENSIONS IN INCHES

## Female with Stud

Right Hand	Left Hand	B + .0025 - .0005	W ± .005	T ± .005	A ± .015	D ± .010	E ± .010	F ± .010	Ball Dia. Ref.	C + .062 - .031	Thread UNF-2B	Misalign. Angle a°	Approx. Brg. Wgt. Lbs.	L Ref.	N ± .010	M Ref.
20F927	20F928	0.1900	0.312	0.250	1.062	0.625	0.406	0.312	0.437	0.562	10-32	13	0.05	1.000	0.500	0.437
20F929	20F930	0.2500	0.375	0.281	1.312	0.750	0.469	0.375	0.500	0.750	1/4-28	16	0.08	1.031	0.562	0.500
20F931	20F932	0.3125	0.437	0.344	1.375	0.875	0.500	0.437	0.625	0.750	5/16-24	14	0.11	1.219	0.687	0.593
20F933	20F934	0.3750	0.500	0.406	1.625	1.000	0.687	0.562	0.719	0.937	3/8-24	12	0.20	1.562	0.906	0.812
20F935	20F936	0.4375	0.562	0.437	1.812	1.125	0.750	0.625	0.812	1.062	7/16-20	14	0.27	1.750	1.062	0.937
20F937	20F938	0.5000	0.625	0.500	2.125	1.312	0.875	0.750	0.937	1.187	1/2-20	12	0.43	2.000	1.125	1.000
20F939	20F940	0.6250	0.750	0.562	2.500	1.500	1.000	0.875	1.125	1.500	5/8-18	16	0.69	2.500	1.500	1.375
20F941	20F942	0.7500	0.875	0.687	2.875	1.750	1.125	1.000	1.312	1.750	3/4-16	14	1.09	3.000	1.812	1.625



AVAILABLE THROUGH

**GRAINGER**

FOR THE ONES WHO GET IT DONE