

# TD2100

# ELECTRIC TAPER

*A Cut Above the Rest*



Made in the USA



Standard  
Model Shown

# MARSH®

Marsh Shipping Supply Co., LLC.

**Gummed Paper Tape** – without a doubt, the most effective, and most tamper proof method to secure your packages...

**Marsh TD2100 Electric** – without a doubt, the most effective and efficient machine ever designed and manufactured by Marsh Shipping Supply Co., LLC. Used to dispense gummed paper tape, the industry has waited years for this machine. You'll agree that it's been worth the wait! The **TD2100** has been designed with ease of operation and dependability in mind. So, if you are feeling a little insecure about your carton closure – be confident that your packages will be received intact – use the **Marsh TD2100** with gummed paper tape.



(800) 854.8905 • 618.343.1006 • Fax: 618.343.1016 • [www.msscllc.com](http://www.msscllc.com)  
926 McDonough Lake Road • Collinsville • Illinois 62234 • USA



All new "Apex" design guillotine style cutter.

420HC Stainless Steel. Provides long life and requires very little cleaning and adjustment.

**STANDARD**

SHIFT	
36	45
78	90
24	28
56	66
16	20
42	48
10	12
32	40
6	8
5	18

**PREMIUM SHORT**

NUM LOCK	
36	45
78	28
24	20
16	12
10	8
6	0

**PREMIUM LONG**

NUM LOCK	
78	90
56	66
42	48
32	40
14	18
6	0

The all new TD2100 Electric is available in 3 models to meet your specific carton closure needs. Standard, Premium Short and Premium Long.

All models feature a tactile keypad, programmable repeat keys for short and long tape lengths. Ideal for sealing same size cartons! Random/Continuous feed feature built-in. LCD Display of lengths.



Bigger is Better! 70 oz water bottle increases production "Up Time" with fewer refills.

Rubber valve reduces water spillage.

Largest bottle in the industry!

**SPECIFICATIONS:**

**Tape**

Paper or Reinforced Gummed tape

Up to 1,000' (304.8m) long roll standard

Maximum roll diameter 9" (222.6mm)

**Tape Widths Accepted**

1" (25 mm) to 3" (80 mm)

**Water Bottle**

70 ounces (2.07 L)

**Shipping Weight**

33 lbs (14.97 kgs)

**Dimensions**

18.9" L x 10.5" W x 13.7" H  
(48.0cm L x 26.6cm W x 34.8cm H)

**Electrical Requirements**

115 volts AC 50/60 Hz, 4 amps  
220 volts AC 50/60 Hz, 2 amps  
Power cord 7 feet (2.3m)

**Certifications**

Conforms to ANSI/UL Std.60950-1, 1st Ed., certified to CAN/CSA C22.2 no.60950-1-03, 1st Ed., CE certified to standard IEC/EN 60950-1: 2001, 1st Ed



**Warranty**

18 Months, Limited

All new wide track 1.5" (38.1mm) feed roll and pinch roll using a high coefficient of friction urethane insuring your tape is always on the move.



All new steel-plated tape plate extension eliminates the possibility of incorrect tape loading.

Dual, double-digit LCD displays the saved long and short tape lengths.

Safety shroud protects user from the heavy duty "apex" design guillotine-style stainless steel cutter.

**FEATURES:**

Heavy duty all metal uni-body chassis construction. powder-coat painted with industrial finish. Long-lasting, high strength injection molded enclosures.

Built-in, all metal adjustable tape guides. Maintains tape roll for smooth tape flow and accurate cutting/less jamming.

High RPM brushless motor with brake and neoprene drive belt. Very quick. Very quiet.

High resolution encoder fastened directly to the motor. Eliminate tape waste with accurate tape lengths.

Lightning fast at the press of a key. Dispenses tape at 3 feet (91 cm) per second.

Premium model not only offers 10 pre-set selectable lengths, but with the use of the "num lock" key provides option to input custom lengths ranging from 5" - 99".

TDE0309

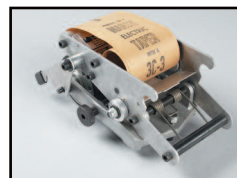


Gummed paper tape is not only environmentally friendly, it's also durable, easy to work with and quick-sealing.

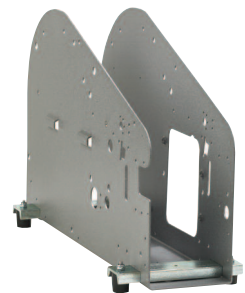
Unlike some tapes that adhere just to the surface of the material they're applied to, the gummed tape is activated by water. When it's applied to a corrugated box, it forms a solid and secure bond.

**MARSH®**

Marsh Shipping Supply Co., LLC.



Optional foot pedal and tape coder available



Heavy Duty - All Metal uni-body chassis provides stability and durability in any environment.