



HURST

JAWS OF LIFE®

Because You Never Get A Second Chance.

For 40 years, Hurst Jaws of Life® has set the standard in emergency rescue products. Our commitment to research and development, along with our dedication to quality engineering and manufacturing, has resulted in a line of products known for their outstanding safety, durability, and performance.

From race track beginnings in 1972 to the rescue heroes of today, the Jaws of Life® Family of Brands – Hurst Jaws of Life, Vetter and Airshore - travel with countless rescue squads, fire and police departments throughout the world.

Hurst Jaws of Life® Now Available Through Grainger

Select Hurst Jaws of Life® products in the eDRAULIC, Vetter, Airshore, and Mini-Lite categories are now available through Grainger.

- **eDRAULIC®** - the next generation in rescue tools – the eDRAULIC® line of electric-hydraulic tools. The new, game-changing eDRAULIC® line of rescue tools feature the un-tethered power of hydraulics coupled with the freedom of no power unit.
- **Vetter** - Vetter pneumatic products feature high and low pressure airbags and many hazmat products for demanding professionals.
- **Airshore** - Airshore is the architect of the world's first Aluminum Rescue Strut and brings you the highest quality aluminum rescue and industrial shoring products.
- **Mini Lite** - Mini Lite tools are stand alone rescue systems that provide the perfect solution for confined space rescues.

Grainger Sourcing

Please refer to Grainger Sourcing to gain access to select Hurst Jaws of Life® Family Of Brands including Hurst Jaws of Life Mini Lite tools, eDRAULIC®, Vetter and Airshore products.



eDRAULIC Jaws of Life® Cutters

Intelligent cutter geometry reduces tool movement during operations. Operate continuously on a power cord, or switch to battery power for more freedom in the field. Each includes charger and 2 batteries. 120VAC Adapter Plug No. 13U682 sold separately. Blade geometry of No. 13U676 is optimized for vehicle extrication. No. 13U675 has more cutting force to cut stronger and wider car posts.

Blade Opening	Cutters	Mfr. Model	Item No.
5.9"	S 311E	272090000	13U676
7.3"	S 700E	272080000	13U675



No. 13U676



No. 13U675

eDRAULIC Jaws of Life® Spreader

Designed for an optimal combination of strength and spreading distance. Features continuous operation on a power cord, or switch to battery power for more freedom in the field. Includes charger and 2 batteries. 120VAC Adapter Plug No. 13U682 sold separately

Spreading Distance	Spreader	Mfr. Model	Item No.
23.8"	SP 300E	271050000	13U677



No. 13U677

eDRAULIC Jaws of Life® Rescue Rams

• **Piston stroke: 14.2"**

The claws at the 2 ends can be rotated by 360° for effective application in almost any rescue situation. For continuous use, tools operate on a power cord; they switch to battery power for more freedom in the field. Each includes charger and 2 batteries. 120VAC Adapter Plug No. 13U682 sold separately.

Description	Ram	Mfr. Model	Item No.
Rescue Ram	R411E	274080000	13U678
Extension		27408100	13U683



No. 13U683



No. 13U684



No. 13U679

eDRAULIC Jaws of Life® Combination Tools

All-in-1 tools rip, cut, or bend steel as needed, without hoses or a power unit. Excellent for structural collapse, off-road rescue, or major accident response. Each includes charger and 2 batteries. 120VAC Adapter Plug model number 13U682 sold separately.

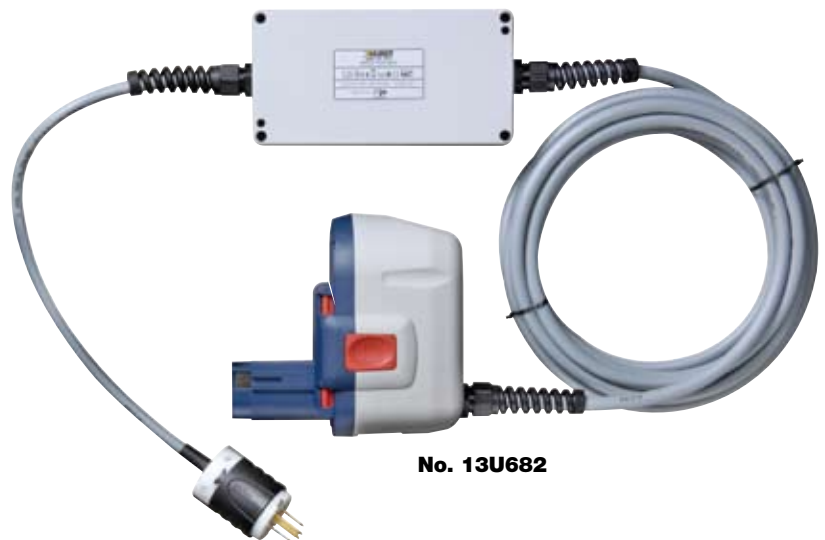
No. 13U684 is designed for tactical operations.

Spreading Distance	Combination Tools	Mfr. Model	Item No.
12.6"	SC250E	273115000	13U684
14.2"	SC350E	273010000	13U679

eDRAULIC Jaws of Life® Accessories

Spare battery and charger help keep tools running longer in the field. 120VAC Adapter Plug allows eDRAULIC tools to run continuously for extended use.

Description	Mfr. Model	Item No.
Rescue Tool Battery	272080410	13U680
Rescue Tool Battery Charger	272080411	13U681
Rescue Tool 110V Adapter Plug	272080412	13U682



No. 13U682



No. 13U681

No. 13U682



No. 13U685



No. 13U686

Hydraulic Rabbit Tools

Hydraulic entry tools force doors open for rescues and tactical operations.

Spreading Distance	Spreading Force	Mfr. Model	Item No.
4"	Up to 8,000lb	362R266	13U685
9"	Up to 8,000lb	362R273	13U686

Mini Lite Hydraulic Spreader

Great for confined space rescue, and lightweight for convenient portability in tactical operations. Can be used with Manual Pump No. 13U692 or a DC power unit (sold separately).

Spreading Distance	Spreading Force	Mfr. Model	Item No.
8"	Up to 7,300 lb.	362R323	13U688

No. 13U688



No. 13U691



No. 13U690

Mini Lite Hydraulic Rams

Force doors open and provide spreading power in confined spaces, at large-scale rescues, and in tactical operations.

Can be used with Manual Pump No. 13U692 or a DC power unit (sold separately).

Spreading Distance	Mfr. Model	Item No.
7.5 to 10.5"	257R116	13U691
9.5 to 14.5"	257R118	13U690

Portable Hydraulic Mini Cutter

Lightweight tool has up to 17,000-lb. cutting force for plenty of power in extreme conditions. Great in confined spaces, at large-scale rescues, and in tactical operations. Can be used with Manual Pump No. 13U 692 (sold separately) or a DC power unit (sold separately).

Blade Opening	Mfr. Model	Item No.
1.5"	362R265	13U687



No. 13U687



No. 13U689

Mini Lite Hydraulic Cutter

Provides up to 13,000-lb. cutting force for tactical operations, in confined spaces, and at large-scale rescues. Can be used with Manual Pump No 13U692 (sold separately) or a DC power unit (sold separately).

Blade Opening	Mfr. Model	Item No.
2"	362R325	13U689

Mini Lite Manual Pump

Hand-operated pump is compatible with all Hurst® Mini Lite tools. Requires no gas, no long hoses, and no batteries.

Description	Mfr. Model	Item No.
Mini Lite Manual Pump	355R077	13U692



No. 13U692

Mini Lifting Bags

- **116 psi max.**
- **0.98" min. insertion height**
- **Aramid construction**
- **Temp. range: -40° to 185°F**

Antistatic, self-extinguishing bags are excellent stabilizing tools for transport accidents, collapsed buildings, rock- and landslides, and earthquake response. Bags operate noiselessly and jerk-free to continuously lift loads. Slip-resistant profile grips slippery ground, including sand and grass. Made of lightweight corrosion-free aramid material with multilayer reinforcement and lossproof valve protection cap. Bags are inspected and sealed, with a safety factor of more than 4:1.



Cap (Tons)	Max. Lift Height (in.)	L x W (in.)	Mfr. Model	Item No.
Lifting Bags				
1.1	3.0	5.5 x 5.1	1314009300	14X231
3.6	4.7	10 x 7.9	1314009500	14X232
6.3	5.7	11 x 11	1314018200	14X233
7	6.5	11.6 x 11.6	1314009600	14X234
10.6	8.0	15 x 15	1314002200	14X235
13.2	7.9	13 x 20	1314002400	14X236
19.5	10.6	19 x 20	1314002500	14X237
21.4	11.0	19 x 23	1314003400	14X238
26.5	12.0	20 x 24	1314002600	14X239
26.5	7.9	12 x 40	1314002700	14X240
34.6	14.6	26 x 27	1314002800	14X241
39.5	12.2	17 x 45	1314018300	14X242
43.7	15.8	31 x 27	1314002900	14X243
60	18.8	34 x 34	1314003000	14X244
74.6	20.5	37 x 37	1314003100	14X245

Cap (Tons)	Description	Mfr. Model	Item No.
Lifting Bag Sets			
80	3 Bag Set	1314008500	14X369
92	5 Bag Set	1314008600	14X368
111	5 Bag Set	1314008700	14X367
138	9 Bag Set	1314008800	14X366
201	8 Bag Set	1314008900	14X365
216	11 Bag Set	1314009000	14X364
243	7 Bag Set	1314029300	14X362
249	8 Bag Set	1314029400	14X363
254	10 Bag Set	1314029200	14X361
361	14 Bag Set	1314029100	14X360
Lifting Bag Sets with Control Kit			
332	14 Bag Set with 1 Control Kit	1314029000	14X371
590	28 Bag Set with 2 Control Kits	1314028900	14X370

Low-Pressure Lifting Bags

- **14.5 psi max.**
- **Aramid construction**
- **Temp. range: -40° to 185°F**

Bags carefully lift and support heavy items including vehicles, and stabilize heavy loads at confined space rescues, transport accidents, and other rescue operations. Internal bands stabilize sides for a flat contact area. Flexible design holds the load around the edges for simultaneous lift and push action. Antislip texture provides excellent grip on soft and slippery ground. Type labels have reflective edges for visibility. Bags are inspected and sealed, with a safety factor at least 3:1. Sets include 2 lifting bags, hoses, dual deadman controller, pressure regulator, packing bag, and repair material.



Cap (Tons)	Max. Lift Height (in.)	W (in.)	Mfr. Model	Item No.
Lifting Bags				
3.3	18	24	3110002300	14X288
5	24	30	3110002000	14X287
7.2	24	36	3110001600	14X286
12.5	43	47	3110000900	14X285

Cap (Tons)	Description	Mfr. Model	Item No.
Lifting Bag Sets			
6.6	(2) 3.3 Ton Bag Set	3110008500	14X283
9.9	(2) 5 Ton Bag Set	3110008400	14X282
14.3	(2) 7.2 Ton Bag Set	3110008300	14X281
24.9	(2) 12.5 Ton Bag Set	3110008200	14X280



Ultra Flat Bags (8 bar / 116 psi)

The unbeatably ultra flat bag.

- Flexible in use
- Insertion height only 0.5 inch
- Ready to use in seconds
- An indispensable tool

With their super-flat insertion height of only 0.5 inch, Vetter ultra flat bags are ideal at the rescue site, fitting into the smallest of gaps. They exert their strength in the most confined spaces and make room for other rescue tools. Thanks to their low air requirement and extreme ease of use, Vetter ultra flat bags are ready to use in seconds. In short: an indispensable tool in a wide range of situations.



	Lifting power, max. to/US tons	Lifting height, max. inch	Size inch	Air requirement at 8 bar/116 psi cu. ft.	Weight, approx. lbs	Mfr. Model	Item No.
Ultra flat bags							
UF1 116 psi ultra flat lifting bag	1.1	3.0	5.5 x 5.1	0.1	0.6	1314018800	14X246
UF3 116 psi ultra flat lifting bag	3.6	4.7	10 x 7.9	0.8	1.6	1314018700	14X247
UF6 116 psi ultra flat lifting bag	7.0	6.5	11.6 x 11.6	1.3	2.9	1314018600	14X248
UF10 116 psi ultra flat lifting bag	10.6	8.0	15 x 15	2.6	3.8	1314020700	14X249

	Mfr. Model.	Item No
Accessories - Lifting Bags		
Inflation hose, yellow (116 psi, 16.4 ft.)	0800000901	14X250
Inflation hose, yellow (116 psi, 32 ft.)	0800007401	14X251
Inflation hose, blue (116 psi, 16.4 ft.)	0800000601	14X252
Inflation hose, blue (116 psi, 32 ft.)	0800007801	14X253
Inflation hose, green (116 psi, 16.4 ft.)	0800000801	14X254
Inflation hose, green (116 psi, 32 ft.)	0800007501	14X255
Inflation hose, red (116 psi, 16.4 ft.)	0800001301	14X256
Inflation hose, red (116 psi, 32 ft.)	1000007601	14X257
Inflation hose, grey (116 psi, 16.4 ft.)	0800000701	14X258
Inflation hose, grey (116 psi, 32 ft.)	0800007901	14X259
Shut-off unit 116 psi	0800005800	14X260
Shut-off unit 116 psi, 1ft hose red	0800007201	14X261
Shut-off unit 116 psi, 1ft hose yellow	0800007301	14X262
Inflation hose yellow (116 psi, 16.4 ft.) w/shut-off	0800008201	14X263
Inflation hose, yellow (116 psi, 32 ft.) w/shut-off	0800008301	14X264
Inflation hose blue (116 psi, 16.4 ft.) w/ shut-off	0800008801	14X265
Inflation hose blue (116 psi, 32 ft.) w/shut-off	0800008901	14X266
Inflation hose, green (116 psi, 16.4 ft.) w/shut-off	0800009001	14X267
Inflation hose, green (116 psi, 32 ft.) w/shut-off	0800009101	14X268
Inflation hose, red (116 psi, 16.4 ft.) w/shut-off	0800008401	14X269
Inflation hose, red (116 psi, 32 ft.) w/shut-off	0800008501	14X270
Inflation hose, grey (116 psi, 16.4 ft.) w/shut-off	0800008601	14X271
Inflation hose, grey (116 psi, 32 ft.) w/ shut-off	0800008701	14X272
Dual Controller 116 psi Deadman switching, plastic	0800001600	14X273
Dual Controller 116 psi Deadman switching, aluminum	0800000201	14X274
Single Controller 116 psi Deadman switching, aluminum	0800000401	14X275
Dual Fitting Controller 116 psi	0800002401	14X276
Single Fitting Controller 116 psi	0800002001	14X277
Y Connector for 116 psi	0800016800	14X278
Dual Deadman controller 1 bar (14.5 psi)	0100001100	14X296
Dual fitting controller 1 bar (14.5 psi)	0100001801	14X293
Inflation hose, yellow (14.5 psi, 16.4 ft.)	0100000501	14X298
Inflation hose, yellow (14.5 psi, 32 ft.)	0100000701	14X299
Inflation hose, red (14.5 psi, 16.4 ft.)	0100001301	14X301
Inflation hose, red (14.5 psi, 32 ft.)	0100001401	14X302
Shut-off unit 1 bar (14.5 psi)	0100000300	14X303
Single fitting controller 1 bar (14.5 psi)	0100001501	14X304
Complete set universal connectors	1600012501	14X314



Universal Tents

Your pneumatic tent for all kinds of operations.

- **Immediately ready to use**
- **Extensive standard features**
- **Useable area 130 to 430 sq. ft.**
- **(216 sq. ft. set up in just 1 minute)**

Vetter universal tents were developed especially for fire/rescue departments. The tents are designed to need especially little time and personnel for transport, setup and takedown. Benefit from these features of our tents: self-erecting support frame, low weight, small folded size and ease of use. With our pneumatic tents, you can quickly set up protective space for colleagues or injured persons. Use the velcro fasteners to connect tents quickly and easily to other tents or directly with containers.



Vetter universal tents are suited to a wide variety of uses such as living quarters for large-scale operations, triage facilities, or decontamination measures. For the latter, you can add Vetter shower units to all our tents.

	Setup time sec.	Ext. dimensions (L x W x H) ft.	Int. dimensions (L x W x H) ft.	Air requirement cu. ft.	Folded size (L x W x H) inch	Weight, approx. lbs	Collection tub cu. ft.	Number of Windows	Mfr. Model	Item No.
Pneumatic Tents										
Pressure Regulator 200 / 300 bar									1600026200	14X329
PZ 40 3 L 3 Line Decon Tent	300	25.6 x 17.6 x 9.9	25.6 x 16.3 x 9.3	242.3	42.9 x 33.2 x 33.2	450	92.1		1520035500	14X317
PZ 20 Decon Tent	250	18.9 x 12.4 x 7.9	18.9 x 11.2 x 7.4	137.4	43 x 33 x 24	214			1520007202	14X318
PZ 12 Pneumatic Tent	40	11.8 x 12.4 x 8.3	11.8 x 11.2 x 7.7	57.6	43 x 33 x 16	121		2	1520002901	14X319
PZ 17 Pneumatic Tent	50	15.7 x 12.4 x 7.9	15.7 x 11.2 x 7.4	71.5	43 x 33 x 24	143		4	1520000401	14X320
PZ 20 Pneumatic Tent	55	16 x 14 x 7.9	16 x 12.8 x 7.4	82.3	43 x 33 x 24	165		4	1520004701	14X321
PZ 25 Pneumatic Tent	120	16 x 17.2 x 8.3	16 x 16 x 7.7	90.7	43 x 33 x 24	187		4	1520008901	14X322
PZ 30 Pneumatic Tent	130	19.2 x 17.6 x 9.9	19.2 x 16.4 x 9.3	101.2	43 x 33 x 24	229		6	1520009402	14X323
PZ 40 Pneumatic Tent	150	25.6 x 17.6 x 9.9	25.6 x 16.4 x 9.3	143.3	43 x 33 x 33	258		6	1520010602	14X324
MT 20 Pneumatic Tent	120	12 x 19 x 11	12 x 18 x 10	132	43 x 33 x 24	168			1523011900	14X325
MT 30 Pneumatic Tent	180	18 x 19 x 11	18 x 18 x 10	184	43 x 33 x 24	249			1523012400	14X326
MT 40 Pneumatic Tent	240	24 x 19 x 11	24 x 18 x 10	237	43 x 33 x 33	302			1523000701	14X327
MT 60 Pneumatic Tent	360	36 x 19 x 11	36 x 18 x 10	371	43 x 33 x 33	472			1523012900	14X328

Decontamination Showers

The mobile decon unit for quick missions.

- **Setup in less than 40 seconds**
- **Self-erecting**
- **Easy to integrate in a decontamination line**
- **Extensive pro-equipment**

Vetter decontamination showers are specially tailored to your mission. Light and mobile, they fit on every emergency vehicle. The fronting basin prevents the spread of contaminated liquids. Clever magnetic fasteners for quick opening and closing of the shower curtain save valuable time in emergencies. With the integrated gloves, you can safely clean contaminated persons from outside. The raised support frame of our decontamination showers allows ergonomic posture while working. Eight movable shower nozzles at various heights guarantee complete cleaning. After cleaning, contaminated liquids can be drained from the inlaid basin without using a submersible pump. With their robust overall construction and special abrasion-resistant undersides,



Vetter decontamination showers are especially durable. Extended by an universal tent, the shower can also feature areas for dressing and undressing.

	Setup time sec.	Ext. dimensions (L x W x H) ft.	Int. dimensions (L x W x H) ft.	Air requirement cu. ft.	Folded size (L x W x H) inch	Weight, approx. lbs	Mfr. Model	Item No.
Decontamination Showers								
Pressure Regulator 200 / 300 bar							1600026200	14X329
Compact Shower	30	5 x 5 x 7	4 x 4 x 7	24	43 x 28 x 12	53 - 64	1513000102	14X330
Compact Shower with gloves	30	5 x 5 x 7	4 x 4 x 7	24	43 x 28 x 12	53 - 64	1513003500	14X331
Compact Shower with drain	30	5 x 5 x 7	4 x 4 x 7	24	43 x 28 x 12	53 - 64	1513003600	14X332
Compact Shower with gloves and drain	30	5 x 5 x 7	4 x 4 x 7	24	43 x 28 x 12	53 - 64	1513003700	14X333
Decon Shower	40	9 x 5 x 7	8 x 4 x 7	26	43 x 28 x 12	60 - 71	1513003900	14X334
Decon shower with gloves	40	9 x 5 x 7	8 x 4 x 7	26	43 x 28 x 12	60 - 71	1513004000	14X335
Decon shower with drain	40	9 x 5 x 7	8 x 4 x 7	26	43 x 28 x 12	60 - 71	1513003800	14X336
Decon shower with gloves and drain	40	9 x 5 x 7	8 x 4 x 7	26	43 x 28 x 12	60 - 71	1513001801	14X337



Leak Sealing Bags, Mini Leak Sealing Bags and Leak Sealing Bandages

Every minute counts when hazardous liquids escape from tanks, pipes or drums. Vetter leak sealing bags, mini leak sealing bags and leak sealing bandages are quick and easy to inflate. Thanks to even pressure distribution, the structures around the liquid discharge area are protected and the danger that the leak gets bigger is reduced.

	Size <i>inch</i>	Sealing Area <i>inch wide</i>	Air Requirement <i>cu. ft.</i>	Wt. of Individual Bag, approx. <i>lbs.</i>	Mfr. Model	Item No.
Hazardous material leak sealing bags, bandages and accessories						
Set Leak Sealing Bag LD 50/30 S (consists of 9 part numbers)					1500005301	14X343
Leak Sealing Bandage, Type 5-20	38.6 x 8.3	7.5	0.8	5.0	1500013900	14X344
Leak Sealing Bandage, Type 20-48	69.9 x 8.3	7.5	1.4	8.8	1500014000	14X345
Leak Sealing Bandage, Type 5-20 XL	39.4 x 15.7	15	2.7	12.3	1500018200	14X346
Inflation hose 21.75 psi, 32 ft., blue					0150000101	14X358
Foot pump with safety valve 21.75 psi					0150002800	14X347
Set Mini Leak Sealing Bags					1500009400	14X350

Leak Sealing Lance (1.5 bar/21.75 psi)

The quick fix for sealing leaks.

The Vetter leak sealing lance enables you to seal small leaks in storage tanks, tank trucks or wagons in seconds and from a safe distance. The device with its simple design provides an invaluable quick-fix which will buy you time to put further measures in place.



	Mfr. Model	Item No.
Hazardous material leak sealing lance		
Set Leak Sealing Lance	1500009600	14X348

Leak Sealing Paste

The easy way to seal valve connectors and flanges.

Hard-to-access leaks can be time-consuming to seal. Now there is a quick and easy solution to seal leaks on the smallest valve connectors and flanges. Vetter leak sealing paste reliably withstands contact with chemical or petrochemical substances such as oil, petrol, hydrocarbons, alkaline solutions, acids, solvents and cleaning agents.



	Mfr. Model	Item No.
Hazardous material leak sealing paste		
Set Leak Sealing Paste	1500004600	14X349



Pipe Sealing Bags FS

Safely seal or divert pipes.

Protect sewage systems and ground water from serious contamination. Vetter pipe sealing bags FS help your team stop hazardous substances quickly. Vetter's pipe sealing bags FS were specifically designed and developed for fire services. The bags individually adjust to different line diameters and are especially resistant to chemicals as well as heat.

Pipe Sealing Sleeves

Durable leak seal for high pressure pipes.

Vetter pipe sealing sleeves reliably seal high-pressure lines with pressure up to 16 bar (232 psi) and can also withstand aggressive liquids. The sealing sleeves contained in the set will equip you for the most common pipe sizes from DN 15 (0.6 inch) to DN 100 (3.9 inches).



	Mfr. Model	Item No.
Hazardous material pipe sealing sleeve		
Set Pipe Sealing Sleeves	1500002201	14X351

	Pipe diameter <i>inch</i>	Diameter <i>inch</i>	Cylinder Length <i>inch</i>	Total Length <i>inch</i>	Air Requirement <i>cu. ft.</i>	Weight, approx. <i>lbs.</i>	Mfr. Model	Item No.
Hazardous material pipe sealing bags and accessories								
Pipe Sealing Bag, Type RDK 7/15 FS	3-6	2.7	12	13.6	0.3	1.1	1482000700	14X352
Pipe Sealing Bag, Type RDK 10/20 FS	4-8	3.5	20	21.9	1.0	2.0	1482000800	14X353
Pipe Sealing Bag, Type RDK 20/40 FS	8-16	7.7	20.1	22.4	3.9	6.8	1482000900	14X354
Pipe Sealing Bag, Type RDK 30/60 FS	12-24	11.6	28.9	30.7	12.8	16.1	1482001000	14X355
Pipe Sealing Bag, Type RDK 50/100 FS	20-40	17.7	43.7	46.1	53.8	36.4	1482001100	14X356
Pipe Sealing Bag, Type RDK 80/140 FS	32-55	30.9	71.3	73.0	110.3	105.8	1482001200	14X357
Inflation hose 21.75 psi, 32 ft., blue							0150000101	14X358
Single fitting controller 21.75 psi							0150002101	14X359





Vehicle Stabilization Kits

Contain struts and other tools to stabilize standard-size vehicles quickly. QuickStrut™ kit has 2 QuickStruts, 2 wrenches, and a carrying case. QuickStrut Accessory Kit provides 2 cluster hooks, 2 axle straps, and 2 protective sleeves, with an accessory bag. The 1-pc. QuickStrut system deploys in about 1 min. from either end.

Other kits contain struts and adjustable extensions, ratchet straps and extensions, and various shaped attachments. ART Lite kit has ART Lite Struts. Basic kit has B Airshore Rescue Struts and includes base plates. Intermediate kit has B and E4.5-7 Airshore Rescue Struts and includes base plates and rigid bases.



No. 14X164

Description	Mfr. Model	Item No.
QuickStrut Vehicle Stabilization Kit	362A491	14X164
QuickStrut Accessory Kit	541A043	14X165
Protective Sleeve for QuickStrut Straps	541A044	14X166
ART Lite Vehicle Stabilization Kit	ART-LK	14X167
Basic Vehicle Stabilization Kit	368A017	14X168
Intermediate Vehicle Stabilization Kit	368A018	14X169



No. 14X167



Building Collapse Kit

Provides struts and other components for temporarily shoring damaged or partially collapsed structures. Contains B, C, E4.5-7, and F7-11 Airshore Rescue Struts, extensions, bases, tripod heads, C- and L-grips, pivots, V-blocks, static clevises, raker rails, raker rail nailers and adapters, pickets, deadman control, tripod hose assembly, and safety chain. Total kit weighs 1327.8 lb.

Description	Mfr. Model	Item No.
Building Collapse Kit	368A022	14x170

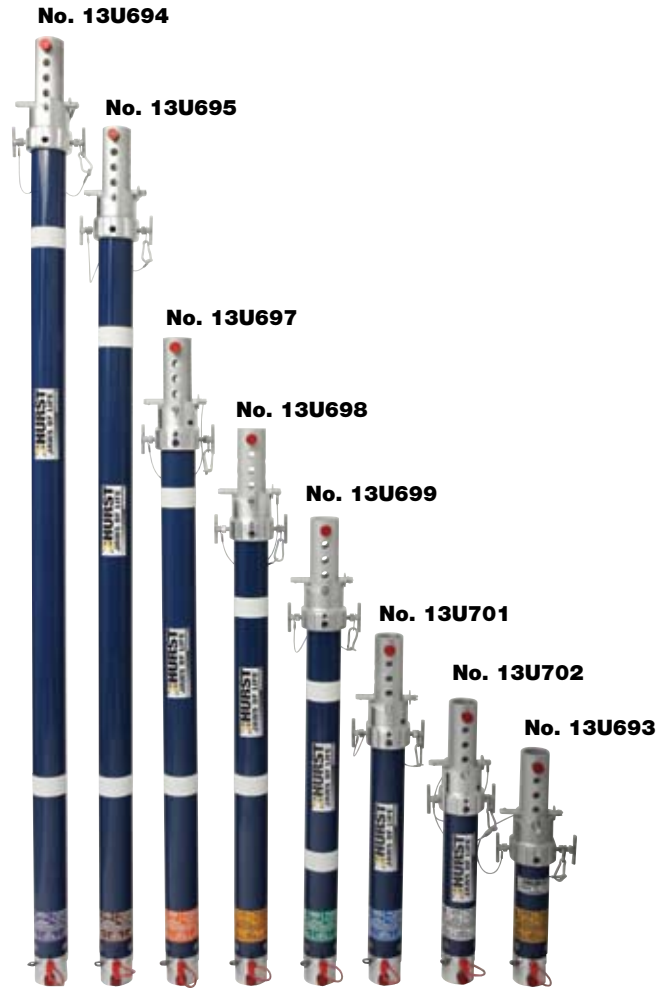


Rescue Struts

- **Pneumatically or manually activated**
- **Aluminum construction**

Airshore Rescue Tool struts and extensions deploy quickly to combine with attachments and accessories (sold separately) for a variety of rescue situations. The 2-pin collar swivels easily on the strut but will not slide out of position. Struts feature superior strength, fast placement, and versatility. Excellent for rapid intervention team (RIT) collapse operations that need vertical positioning and for horizontal positioning in small trench spaces.

Distance	Length	Mfr. Model	Item No.
Struts			
ART-AA Strut	13 to 18"	368A073	13U693
A Strut	21 to 28"	368A041	13U702
B Strut	26 to 37"	368A042	13U701
C Strut	33 to 49"	368A043	13U699
D Strut	45 to 67"	368A044	13U698
E4.5-7 Strut	54 to 84"	368A046	13U696
E Strut	63 to 97"	368A045	13U697
F7-11 Strut	84 to 132"	368A047	13U695
F Strut	93 to 144"	368A048	13U694
Strut Extensions			
ART-E6 Extension	6"	ART-E6	13U703
ART-E12 Extension	12"	ART-E12	13U704
ART-E18 Extension	18"	ART-E18	13U705
ART-E24 Extension	24"	ART-E24	13U706
ART-E36 Extension	36"	ART-E36	13U707
ART-E48 Extension	48"	ART-E48	13U708
ART-E72 Extension	72"	ART-E72	13U709



Industrial Struts

- **Pneumatically or manually activated**
- **Aluminum construction**

Airshore Industrial Struts are easy to use, light enough to hand-carry, can be transported in the back of a pickup truck, and offer solid protection for work below grade. Once activated and locked, the strut serves as a fixed mechanical unit to maintain pressure to trench walls.

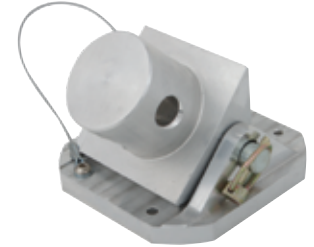
	Length	Mfr. Model	Item No.
Standard Struts			
	18 to 27"	AS-A	14X207
	23 to 36"	AS-B	14X208
	30 to 48"	AS-C	14X209
	52 to 66"	AS-D	14X210
	60 to 96"	AS-E	14X211
	90 to 120"	AS-F	14X212
	114 to 144"	AS-G	14X213
Swivel Struts			
	21 to 29"	AS-SA	14X214
	25 to 38"	AS-SB	14X215
	33 to 50"	AS-SC	14X216
	45 to 68"	AS-SD	14X217
	63 to 98"	AS-SE	14X218
	93 to 122"	AS-SF	14X219
	117 to 146"	AS-SG	14X220



No. 13U711



No. 13U720



No. 13U728



No. 13U730



No. 13U737



No. 13U739



No. 13U749

	Size inch	Weight lbs	Mfr. Model	Item No.
Attachments				
22° Clevis	4 x 3.5 x 5.5	2.5	ART-PC	13U710
5" Base Plate	2 x 5 x 5	2.25	ART-BP5	13U711
45° Clevis	3.5 x 3.5 x 3.5	1.5	ART-C45	13U712
45° Static Clevis	4.5 x 4 x 3.5	2.25	ART-45SC	13U713
Rigid Base	6 x 6 x 2.5	2.5	ART-RB	13U714
60° Clevis	3.5 x 3.5 x 5	2.38	ART-C60	13U715
Static Clevis	4 x 3.5 x 5.5	3	ART-SC	13U716
Flat Base	2.5 x 5 x 5	2	ART-FB	13U717
Rhino Head Attachment	5 x 4 x 4.5	2.5	ART-RH	13U718
Chain Wedge	6.75 x 3	3	ART-CW	13U719
Point Attachment	7 x 3	2	ART-PT	13U720
V-Block	4 x 5 x 3	2	ART-VB	13U721
L-Grip	5 x 4 x 6	1.5	ART-LG	13U722
4" C-Grip	4.75 x 6 x 4	1.5	ART-CG4	13U723
6" C-Grip	4.75 x 6 x 6	1.75	ART-CG6	13U724
8" C-Grip	4.75 x 6 x 8	1.75	ART-CG8	13U725
15° Swivel For Struts	5 x 4	1.5	ART-SL15	13U726
23° Swivel For Struts	4 x 5 x 5	3.5	ART-S23	13U727
45° Pivot	4 x 5 x 5	3.4	ART-P45	13U728
60°Pivot	5 x 5 x 5.6	4.3	ART-P60	13U729

	Mfr. Model	Item No.
Raker Rails Attachments		
45°/60° Raker Rail Attachment	225A003	13U730

	Size inch	Weight lbs	Mfr. Model	Item No.
Light Duty Raker Rails				
4' Light Duty Raker Rail	4 x 5.75 x 1.5	16	ART-RR4	13U731
5' Light Duty Raker Rail	5 x 5.75 x 1.5	20	ART-RR5	13U732
6' Light Duty Raker Rail	6 x 5.75 x 1.5	24	ART-RR6	13U733
8' Light Duty Raker Rail	8 x 5.75 x 1.5	32	ART-RR8	13U734
10' Light Duty Raker Rail	10 x 5.75 x 1.5	40	ART-RR10	13U735
Light Duty Rail Connector	24 x 5 x 1.54	7	ART-LDCON	13U745
18" Spot Shore Rails	18 x 5.75 x 1.5	15	ART-RR18	13U736
36" Spot Shore Rails	36 x 5.75 x 1.5	31	ART-RR36	13U737

Heavy Duty Raker Rails				
4' Heavy Duty Raker Rail	4 x 6.75 x 3.5	59	ART-HDR4	13U738
5' Heavy Duty Raker Rail	5 x 6.75 x 3.5	74	ART-HDR5	13U739
6' Heavy Duty Raker Rail	6 x 6.75 x 3.5	88	ART-HDR6	13U740
8' Heavy Duty Raker Rail	8 x 6.75 x 3.5	117	ART-HDR8	13U741
10' Heavy Duty Raker Rail	10 x 6.75 x 3.5	147	ART-HDR10	13U742
12' Heavy Duty Raker Rail	12 x 6.75 x 3.5	176	ART-HDR12	13U743
Heavy Duty Rail Connector	24 x 5 x 3.25	10	ART-HDCON	13U744

	Size inch	Weight lbs	Mfr. Model	Item No.
Raker Rail Attachments, Base Plates				
Raker Rail Adapter	7.5 x 5 x 5	2.5	ART-RRR	13U746
Raker Rail Nailer	5.25 x 8 x 12	9.5	ART-RRN	13U747
12" Base Plate With Bracket	12 x 12 x 4	9.75	ART-BPB12	13U749
6" Base Plate	6 x 6 x 2.4	3.75	ART-BP6	13U750
Tripod Head	2.75 x 16 x 16	27	ART-TH	13U751

	Size inch	Weight lbs	Mfr. Model	Item No.
Air Supply Kits & Components				
Single Low Pressure Regulator	5.5 x 5 x 4	3	PAI-0002RA1	14X149
Dual High Pressure Regulator	5.5 x 14.5 x 19.5	3	PAI-0002RA2	14X150
Dual Strut Control Deadman Type	9 x 6 x 3.5	3	AIR-DMT	14X151
Single Deadman Control	7 x 2.5 x 3	1.4	AIR-DM	14X152
Single High Pressure Air Supply Assembly		16	AIR-049R	14X156
Dual High Pressure Air Supply Assembly		19	AIR-051R	14X157
15' Whip hose-BLUE	180 x .375	2.5	PAI-0007B	14X158
15' Whip hose-RED	180 x .375	2.5	PAI-0007R	14X159
35' Supply hose-RED	420 x .375	5.5	PAI-0009R	14X160
35' Supply hose-BLACK	420 x .375	5.5	PAI-0009BK	14X161
Tripod Hose Assembly	48 x 42 x .375	3	AIR-THA	14X162
2-Way Manifold	96 x .375	4	AIR-2MH	14X163



HURST

JAWS OF LIFE[®]

711 N. Post Road • Shelby, NC 28150 • 1.800.537.2659
contacthurst@idexcorp.com • www.jawsoflife.com

AVAILABLE THROUGH

GRAINGER[®]

||||| **FOR THE ONES WHO GET IT DONE**