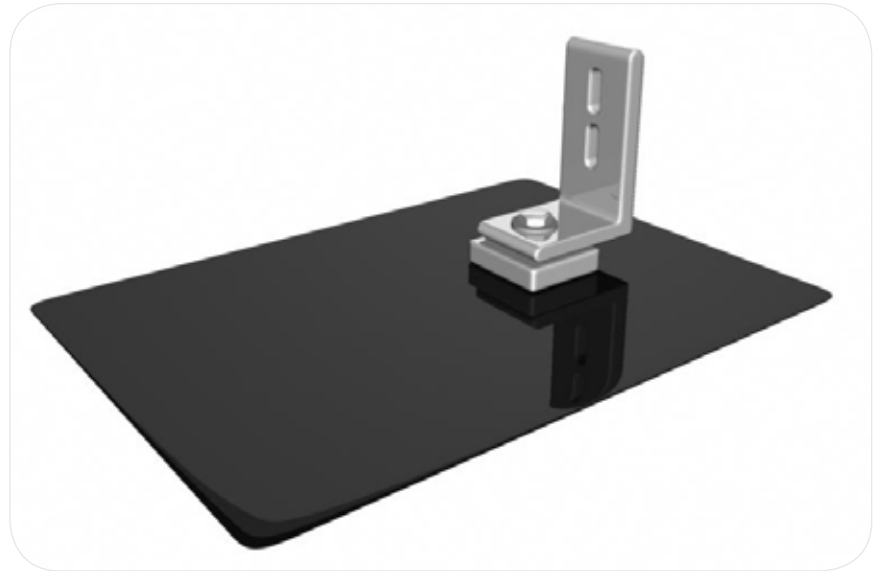
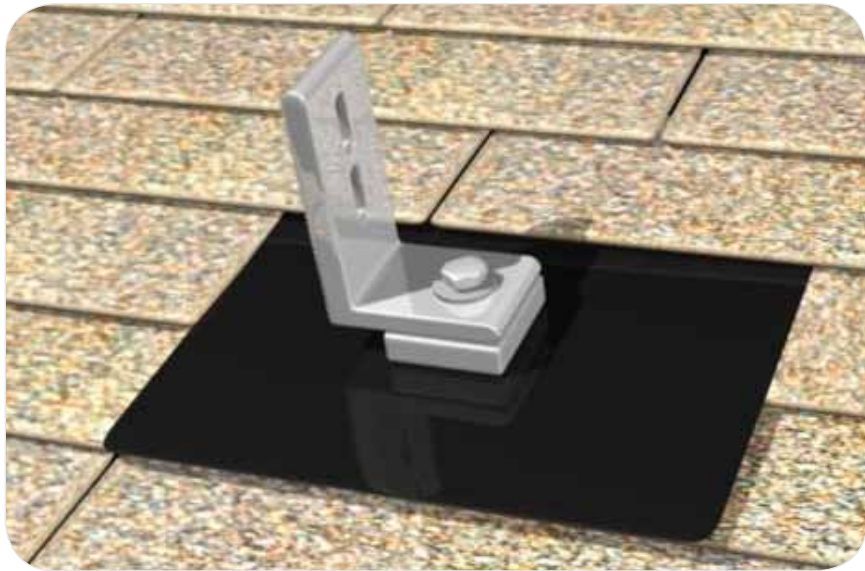


Unirac Flat Flashing INSTALLATION MANUAL

© 2011 by Unirac, Inc. All rights reserved.
Pub 110525-1ii, May 2011



IMPORTANT!

Unirac Inc. makes no warranty of any kind with regard to this material, including, but not limited to, the implied warranties of merchantability and fitness for a particular purpose.

The information in this document is subject to change without notice.

Unirac shall not be liable for errors contained herein or for incidental or consequential damages in connection with the furnishing, performance, or use of this material.

This document contains proprietary information that is protected by copyright. All rights are reserved. No part of this document may be photocopied, reproduced, or translated to another language without the prior written consent of Unirac.

Unirac Inc.
Marketing Department
1411 Broadway Boulevard, NE
Albuquerque, NM 87102-1545

© Unirac Inc., 2011. All rights reserved.

INTRODUCTION

Unirac Flat Flashing

Thank you for choosing Unirac Flat Flashing. This quick start guide provides easy step-by-step installation instructions. For additional information, please visit us at www.unirac.com.

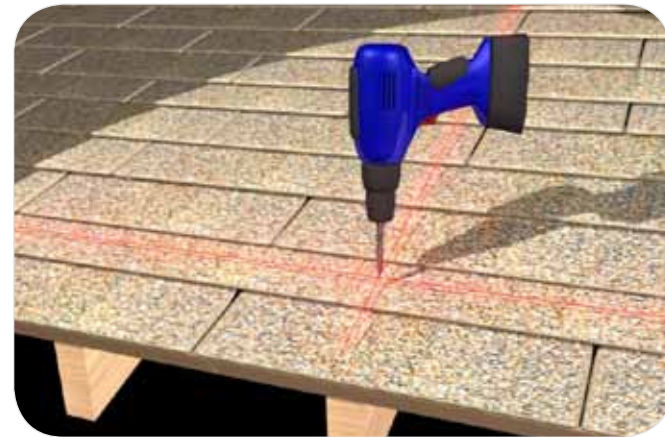
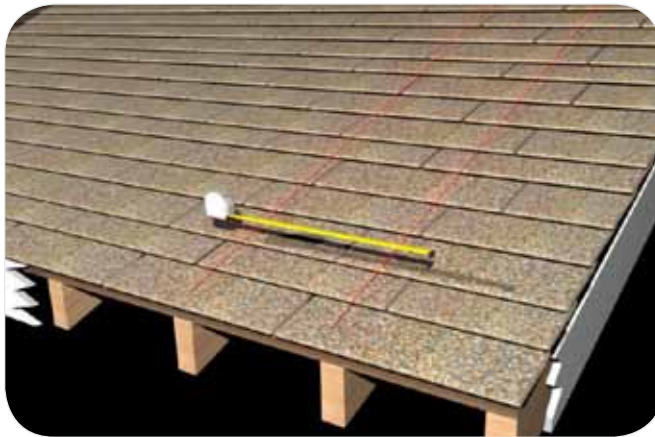
BEFORE YOU BEGIN

- 1 Verify that all of the components are included and consistent with your order.
- 2 *Tools required:* drill, socket drive for lag bolt, tape measure, stud finder, chalk line.

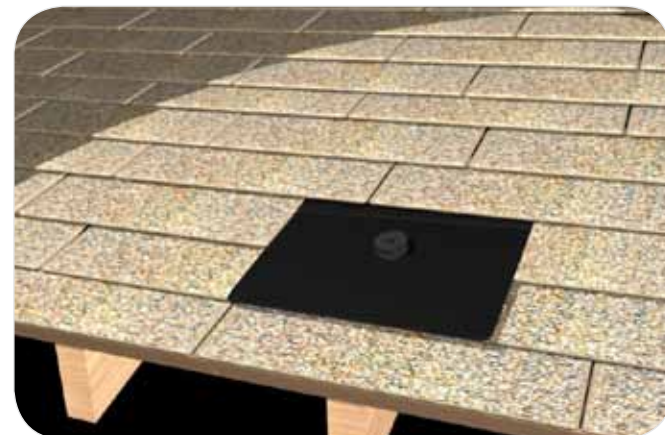
INSTALLING UNIRAC FLAT FLASHING ON COMPOSITION SHINGLE ROOFING

Step 1: Locate the rafters and snap horizontal and vertical lines to mark the installation position for each Flat Flashing.

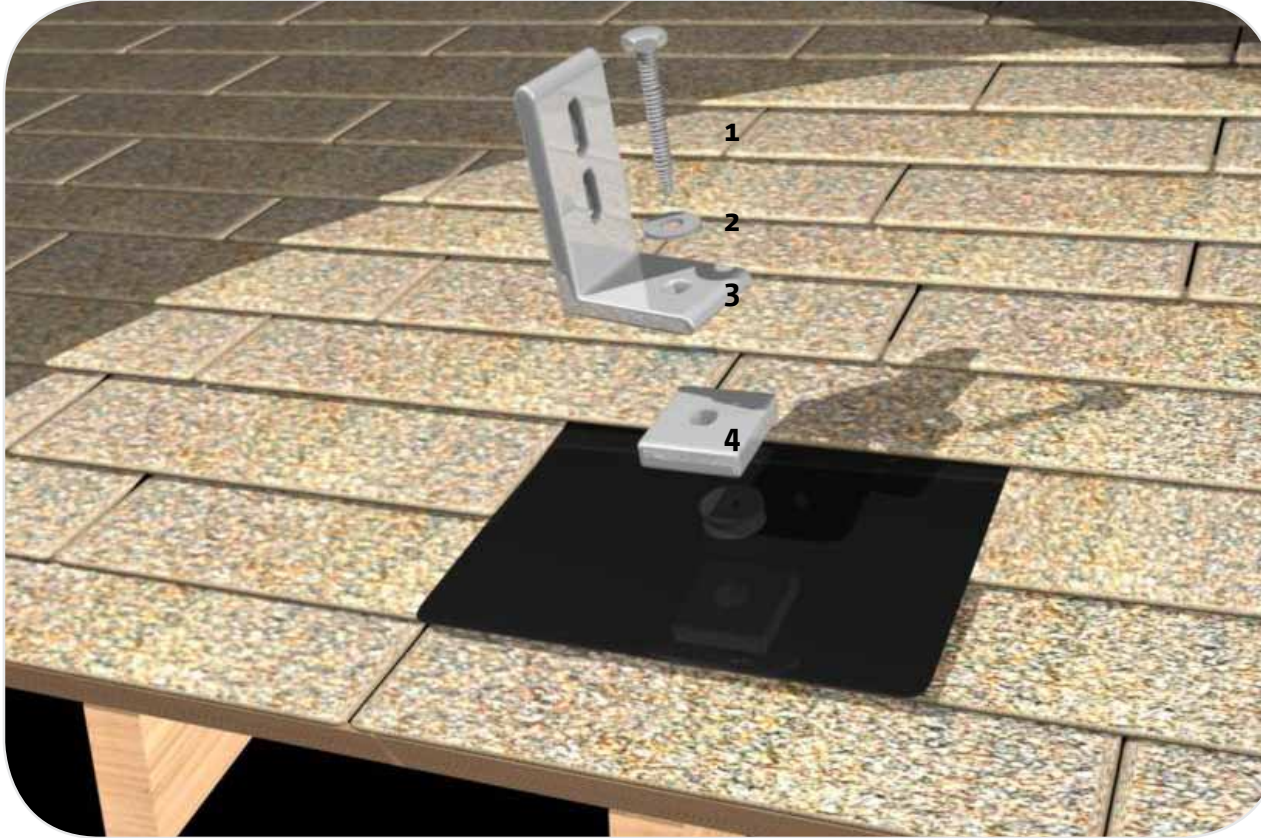
Step 2: Center the Flat Flashing over the rafter and drill a pilot hole for the lag bolt.



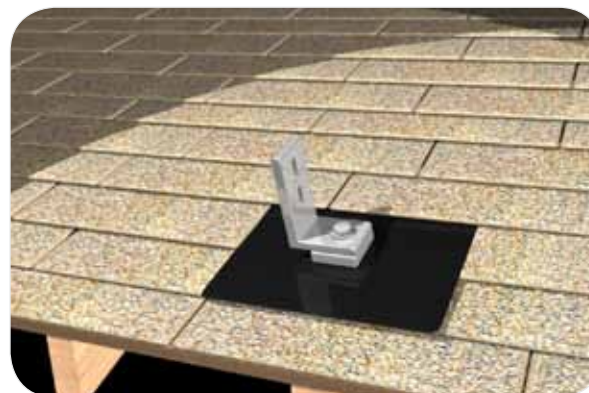
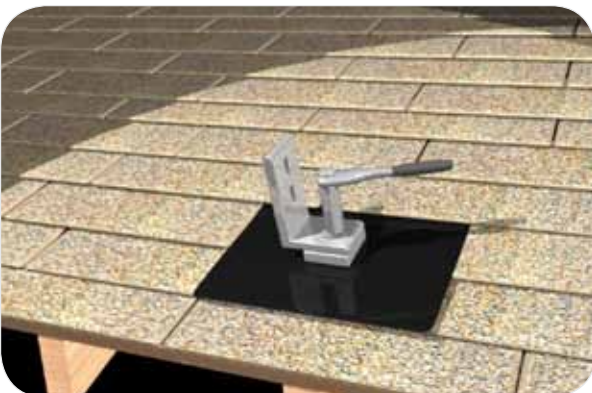
Step 3: Insert the Flat Flashing so the top part is under the next row of shingles and the hole lines up with the pilot hole.



**Step 4: Insert the lag bolt through the components in the order shown in the illustration.
Tighten into the rafter.**



1. Lag Bolt (Installer Provided)
2. EPDM Washer
3. L-Foot
(or other rail
attachment piece)
4. Square Aluminum Piece
(concave side down)



WARRANTY

See <http://www.unirac.com> for current warranty documents and information.

Unirac Flat Flashing
INSTALLATION MANUAL

www.unirac.com