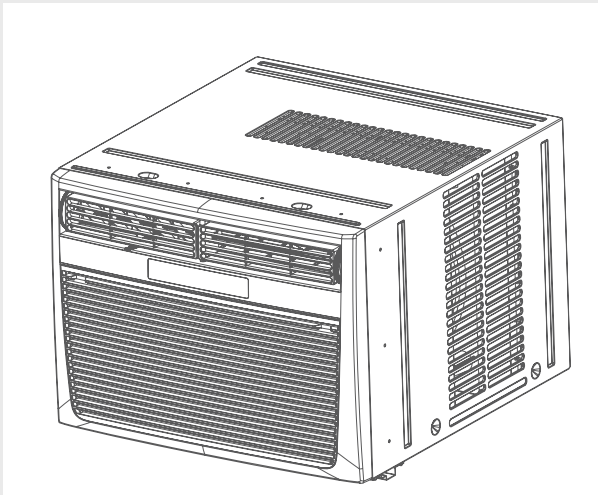


# FRIGIDAIRE

## Factory Parts Catalog



Product No.	FFRH1822Q20	FFRH1822Q21
Series	Median w/heat	Median w/heat
Color	white	white
Volts	230/208	230/208
BTU-Cooling	18500/18200	18500/18200
BTU-Heating	16000/13000	16000/13000
Owner's Guide	2020218a1523en	2020218a1523en
Installation Instructions	2020218a1535	2020218a1535
Market	North America	North America

### Frigidaire

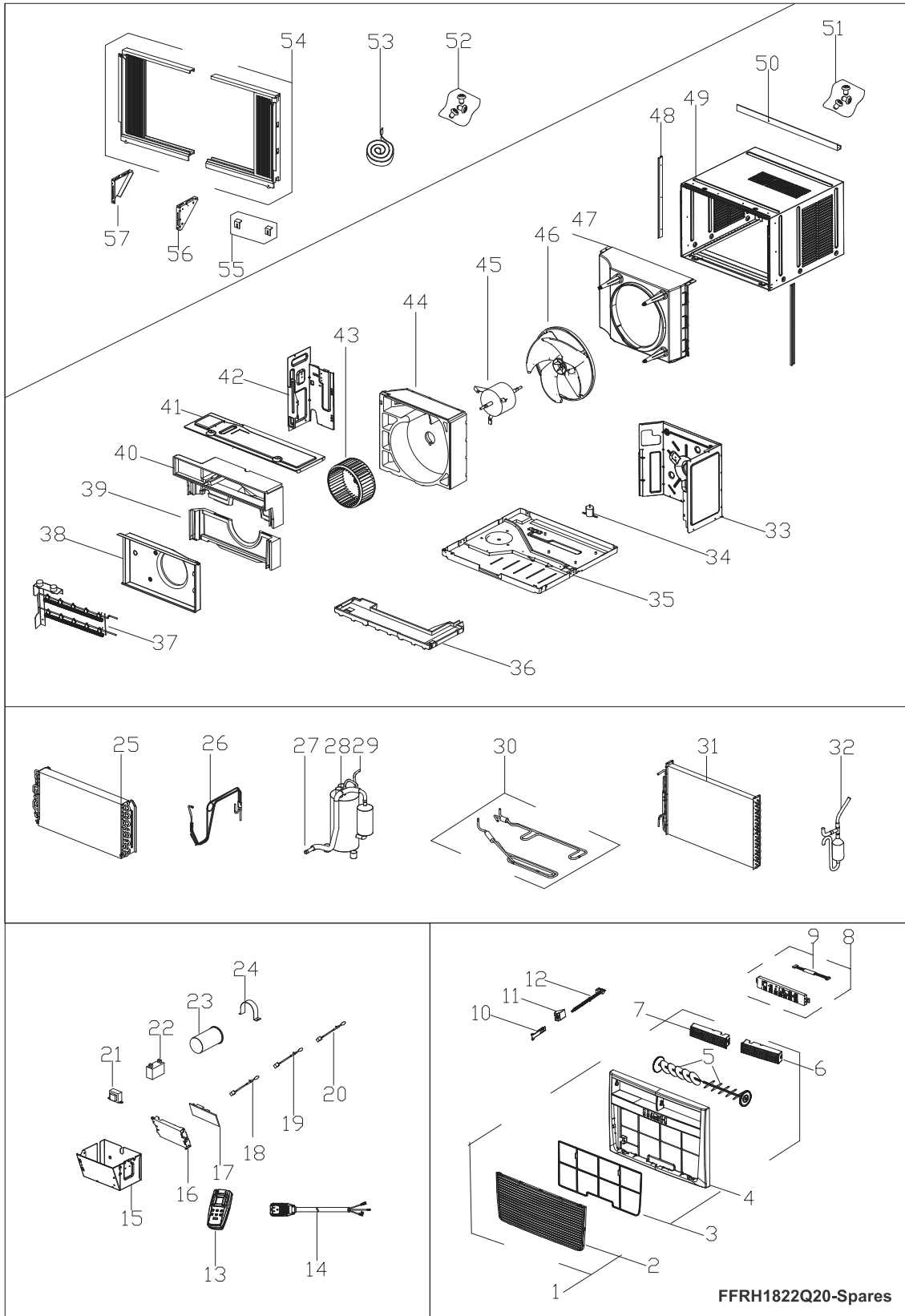
P.O. BOX 8020  
CHARLOTTE, NC 28262

Publication No.  
**5995646287**  
14/05/30  
(EN/SERVICE/KC)  
099

### ROOM AIR CONDITIONER

Model No.  
FFRH1822Q2

RECOMMENDED SPARE PARTS



**RECOMMENDED SPARE PARTS**

*Model Index:* A FFRH1822Q2 (FFRH1822Q20)  
B FFRH1822Q2 (FFRH1822Q21)

POS. NO	PART NO.		DESCRIPTION
1 #	5304483061	A B	Front Assembly, complete panel
2	5304476943	A B	• Panel, front grille, tilt-out
3 #	5304476944	A B	• Filter, air
4	5304483062	A B	• Panel, frame, front
5 #	5304476946	A B	• Louver, vertical
6 #	5304496319	A B	• Louver, horizontal, right
7 #	5304496320	A B	• Louver, horizontal, left
8 #	5304496261	A B	PC Board, display/input
9 #	5304495009	A B	• Wire, connector, pc boards
10 #	5304495010	A B	Handle, vent control
11 #	5304476359	A B	Link, lever/vent door, detente
12 #	5304476950	A B	Door, vent control, with lever
13 #	5304482937	A B	Remote Control, transmitter
14 #	5304476312	A B	Power Cord, electric, LCDI
15	5304495623	A B	Control Box
16	5304495029	A B	Holder, mounting plate, control
17 #	5304496321	A B	PC Board, main, control/power
18 #	5304487548	A B	Sensor, ambient temp, thermistor
19 #	5304471383	A B	Sensor, temperature, evaporator
20 #	5304476316	A B	Sensor, temperature, discharge air, DAHT
21 #	5304471063	A B	Transformer
22 #	5304482883	A B	Capacitor, fan motor
23 #	5304475736	A B	Capacitor, compressor
24	5304471203	A B	Strap, capacitor clamp
25 #	5304495737	A B	Evaporator
26 #	5304476318	A B	• Tube, capillary
27 #	5304495654	A B	Tube, suction
28 #	5304475735	A B	Compressor
29 #	5304495656	A B	Tube, discharge
30 #	5304486013	A B	Tube, condensate evap, drain pan
31 #	5304495738	A B	Condenser
32 #	5304476257	A B	Dryer-filter
33	5304495630	A B	Bulkhead, partition, front/right
34 #	5304476323	A B	Valve, drain
35	5304476324	A B	Base, unit chassis
36	5304472530	A B	Tray, drip pan
37 #	5304472338	A B	Heater Assembly, electric
38	5304495739	A B	Shield, heater housing
39	5304495740	A B	Scroll, blower housing, bottom
40	5304496322	A B	Scroll, blower housing, top
41	5304495632	A B	Cover, blower scroll, front
42	5304495633	A B	Bulkhead, partition, front/left
43 #	5304472346	A B	Blower Wheel, centrifugal fan
44	5304483068	A B	Scroll, blower housing, rear
45 #	5304483059	A B	Motor, fan
46 #	5304472356	A B	Fan Blade, axial flow
47	5304495634	A B	Shroud, condenser/fan
48	5304487567	A B	Retainer, shutter, cabinet sides
49	5304486012	A B	Cabinet, wrapper/sleeve
50	5304476333	A B	Rail, shutter track, top angle
51	5304472546	A B	Screw Kit, top rail mount
52	5304476266	A B	Hardware, mounting, screws/locks
53	5304472366	A B	Seal Kit, foam, sash & rails
54	5304476267	A B	Window Filler Kit, slider panels, accordion
55	5304472360	A B	Bracket, sill angle
56	5304482508	A B	Bracket, mounting, right window
57	5304482509	A B	Bracket, mounting, left window

WIRING DIAGRAM

