

**HAND-E-WAVE™**

**TOUCHLESS SWITCH**



**Hand-E-Wave™** is a rugged, stainless steel, touchless switch built with advanced microwave technology. Ideal for use in sterile environments such as hospitals, food processing plants and clean rooms, Hand-E-Wave's recessed design is easy to clean and sanitize. Touchless switch activation helps reduce the spread of infectious diseases.

- Power Requirements: 12–24VAC/DC\*
- Toggle or Adjustable Output Time: 1 to 30 seconds
- Adjustable Detection Range: 2 to 24 inches (typical)
- Dimensions: Narrow 4 ½" x 1 ¾" x 1" Single gang 4 ½" x 2 ¾" x 1"

**Item No. Description**

- 32NF30** Hand-E-Wave™ Touchless Switch, Narrow
- 32NF31** Hand-E-Wave™ Touchless Switch, Single Gang



**32NF30**



**32NF31**

**HAND-E-TAP®**

**ADA COMPLIANT TOUCH SWITCH**

**Hand-E-Tap®** is a heavy duty, stainless steel, ADA Compliant touch switch designed to operate in various high use, harsh or vandal prone environments. This multipurpose, programmable switch which can be used to control an automatic door, electric strike, magnetic lock or any electrically controlled device. Hand-E-Tap is built with Essex Piezoelectric Switch technology with sensitivity adjustment which allows the switch to be operated with a light tap or with a gloved hand, elbow or cane.

- Power Requirements: 12–24VDC\*
- Toggle or Adjustable Output Time: 1 to 60 seconds
- Rugged Piezoelectric Switch Technology
- Dimensions: 5 ⅛" x 3 ⅜" x 1"

**Item No. Description**

- 3CWR2** Hand-E-Tap® Touch Switch, ADA Wheelchair Icon, Stainless Bezel
- 3CWR3** Hand-E-Tap® Touch Switch, ADA Wheelchair Icon, Black Bezel



**3CWR2**



**3CWR3**

\*Access Switches require power for operation. Backup power (i.e. UPS) required for operation during a power interruption.

## ROXPROX™

## RUGGED PROXIMITY READER

**RoxProx™** is a heavy duty 125 kHz Proximity Reader built with Genuine HID Technology™. Designed to work with most OEM Access Control panels, RoxProx reads HID Proximity Cards (up to 91 Bits). RoxProx features stainless steel construction, epoxy encapsulated electronics, audiovisual feedback and a low profile, vandal resistant design.



- 125kHz Wiegand Proximity Reader with Genuine HID Technology™
- 1/8" Stainless Steel Faceplate
- 5 or 12VDC Field Selectable Input Voltage
- Current Draw: 50mA Standby, 150mA max
- IP 66 Rated, -40° C to +70° C, 100% Relative Humidity
- Up to 2" Read Range
- Dimensions: Mullion 4 1/2" x 1 3/4" x 3/4"  
Single gang 4 1/2" x 2 3/4" x 3/4"



6NVN7



32NF28

Item No.	Description
6NVN7	RoxProx™ Narrow Proximity Reader with <b>Essex Blue Globe design</b>
6NVN8	RoxProx™ Single Gang Proximity Reader with <b>Essex Blue Globe design</b>
32NF27	RoxProx™ Narrow Proximity Reader with <b>Essex Red RFID design</b>
32NF28	RoxProx™ Single Gang Proximity Reader with <b>Essex Red RFID design</b>
4TXY1	50 ea. HID Proximity Keyfobs (125kHz 26 Bit Proximity)
4TXY3	100 ea. HID Clamshell Proximity Cards II (125kHz 26 Bit Proximity)

## PIEZOPROX® & iSMART™

## KEYPAD/CARD READERS

**PiezoProx® & iSMART™** are virtually indestructible, professional grade, dual technology access control readers. Compatible with most OEM panels, PiezoProx combines an Essex Piezoelectric Keypad with HID 125 kHz Proximity. iSMART offers an enhanced level of security by integrating HID iCLASS® 13.56MHz smart card technology.



- Weatherproof/Waterproof: IP66 Rated, -40° C to +70° C, 100% Relative Humidity
- Card Reader: HID Proximity (PPH), HID iCLASS (ISH).
- Keypad Output: 26 Bit Wiegand (8 Bit Word also available)
- Keypad Bezel: Stainless Steel
- Current Draw
 

	With LED's	Without LED's
5 Volt	< 50mA	< 30mA
12 Volt	< 80mA	< 35mA
- Mounting: Single gang switchbox or surface mount
- Dimensions: 7 1/4" x 3 5/8" x 1 1/2"

### Card Reader Options



Item No.	Description
1JYX6	PPH-103-SN, PiezoProx® Reader- HID Proximity w/ 26 Bit Wiegand Keypad, Stainless Bezel
1JYX7	ISH-103-SN, iSMART™ Reader - HID iCLASS w/ 26 Bit Wiegand Keypad, Stainless Bezel
4TXY1	FOB-1346-50, 50 ea. HID Proximity Keyfobs (125kHz 26 Bit Proximity)
4TXY2	FOB-2050-50, 50 ea. HID iCLASS Keyfobs (13.56MHz 37 Bit iCLASS)
4TXY3	CARD-1326-100, 100 ea. HID Clamshell Proximity Cards II (125kHz 26 Bit Proximity)
4TXY4	CARD-2080-100, 100 ea. HID Clamshell iCLASS Smart Cards (13.56MHz 37 Bit iCLASS)



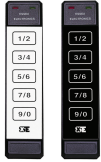
4TXY1



4TXY3

All Weather Keypad • Request to Exit • Latching • Anti Tailgating • Tamper Alarm • Programmable Output Time • Non Volatile Memory

### SKE-6



#### Self Contained, Access Control Keypad

- 6 User
- 12-24VAC/DC In/Out
- 1 SPDT Relay (2 amp at 24V max)
- 2 Auxiliary Open Collector Outputs (1/4A)
- Keypad Programmable

#### Item No.

#### Description

**1JYV5**

SKE-6SN, Stainless Overlay

**1JYV6**

SKE-6LI, Black Illuminated Overlay

### SKE-34/SKE-26

#### Multiple User, Self Contained, Access Control Keypad



- 500 User
- 12-24VDC In/Out
- 1 SPDT Relay (2 amp at 24V max)
- 2 Auxiliary Open Collector Outputs (1/4A)
- Keypad Programmable
- 2HNE8 and 2HNF2 are CSA Listed for Elevator Access Control

#### Item No.

#### Description

**2HNE8**

SKE-34S, 3x4 Stainless Bezel

**2HNF2**

SKE-34K, 3x4 Black Bezel

**2HNF5**

SKE-26S, 2x6 Stainless Overlay

**2HNF8**

SKE-26I, 2x6 Black Illuminated Overlay

### KE-265



#### Stand Alone Keypad Access Control System

- 6 User
- 12-24VAC/DC In/Out
- 2 SPDT Relays (6 amp, 120VAC)
- Keypad Programmable
- Separate control module for enhanced security

#### Item No.

#### Description

**1JYV7**

KE-265 System with 5 Pad Stainless Keypad

**2HNH6**

KP-5S, 5 Pad Stainless Keypad for 1JYV7

**2HNH9**

WC-15, 15' Wiring Cable for 1JYV7

**2H NJ3**

CM-265, Control Module for 1JYV7

### K1



#### All-In-One Keypad Reader (26 Bit Wiegand, 8 Bit Word,...) and Stand Alone Access Control System

Configure Keypad as OEM Compatible Reader or Keyless Entry System

- 500 User
- 5VDC or 12-24VDC In/Out (Keypad)
- 3 Programmable Outputs
- Keypad and/or PC Programmable\*
- Optional Encoded Relay Module (ERM-3) with 3 SPDT Relays (6 amp, 120VAC) for secure access

#### Item No.

#### Description

**1JYX2**

K1-34S, 12 Pad 3x4 Stainless

**1JYX3**

K1-26S, Thinline 2x6 Stainless

**1JYV8**

K1-34S, 12 Pad 3x4 Stainless + ERM-3

**1JYV9**

K1-26S, Thinline 2x6 Stainless + ERM-3

### Keyless IP

#### Stand Alone, Single Door Web Based Access Control System



4TXX3 shown

- 1,000 User (Pin or Card)
- 12-16VDC In/Out
- 2 SPDT Relays (2A @ 30VDC)
- 5,000 Stored Audit Events
- 8 Programmable Schedules
- Managed via standard web browser
- Migrates to a host based system
- DHCP or Static IP networks
- Built in 802.3af PoE (Power Over Ethernet)
- Keypad or Combination Keypad + HID 125 kHz Proximity
- Browser "Door Dashboard" accesses remote door commands, status, alarms and recent events
- Standard reports available
- Proximity Cards and Keyfobs for the 4TXX3 are available on page 2.

#### Item No.

#### Description

**4TXX1**

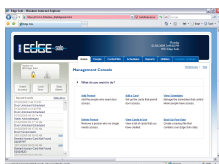
KIP-34S, 12 Pad 3x4 Stainless Keypad

**4TXX2**

KIP-26S, Thinline 2x6 Stainless Keypad

**4TXX3**

KPIP-34S, 3x4 Stainless Keypad + HID Proximity



Web Browser

## PEB SERIES

## PIEZOELECTRIC TOUCH SWITCH

**PEB Series** are industrial grade, illuminated, stainless steel, electronic switches designed for high use, harsh and vandal prone environments. Brilliant Red, vibrant green or no illumination can be selected for standby and switch activation status.

- Power Requirements: 12–24VDC\*
- Adjustable Output Time: 1 to 40 seconds
- Rugged Piezoelectric Switch Technology
- Dimensions: Single gang 4 1/2" x 2 3/4" x 1 1/4" Narrow 4 1/2" x 1 3/4" x 1 1/4"

<u>Item No.</u>	<u>Description</u>	<u>Faceplate Graphics</u>
<b>1JYX5</b>	PEB Series, U.S. Single Gang Switch	"PUSH TO EXIT"
<b>4TXX7</b>	PEB Series, U.S. Single Gang Switch	"PUSH TO OPEN"
<b>2HNK3</b>	PEB Series, U.S. Single Gang Switch	"EMERGENCY EXIT"
<b>4TXX5</b>	PEB Series, Narrow Piezo Switch	"PUSH TO EXIT"
<b>4TXX6</b>	PEB Series, Narrow Piezo Switch	"PUSH TO OPEN"



**4TXX5**



**1JYX5**

## ACCESSORIES

### Power Supplies



<u>Item No.</u>	<u>Description</u>
<b>4TXX4</b>	PS-12DC, 12VDC, 1.5 Amp Power Supply for Essex Hand-E-Tap, PEB, SKE and Keyless IP Series
<b>2HNG2</b>	PS-12, 12VAC, 1 Amp Power Supply for Essex SKE-6, KE-265 and K1 Series
<b>2HNG5</b>	PS-24, 24VAC, 1.6 Amp Power Supply for Essex SKE-6, KE-265 and K1 Series

### Stainless Steel Spy Proof Housing



For areas with low ambient lighting, the Illuminated Stainless Steel Spy Proof Housing provides cool blue illumination and serves to limit the view of an unwelcome onlooker. Available exclusively for the Essex 12 Pad 3x4 Keypad or Hand-E-Tap Door Access Switch.

- Dimensions: 5 5/8" x 3 5/8" x 1" to 2 1/4"
- Stainless Steel Construction
- Long Lasting blue LED's

<u>Item No.</u>	<u>Description</u>
<b>2HNJ8</b>	SH-34SI-12, Illuminated 12VDC Spy Proof Housing*

\* Can be powered by an Essex Keypad DC or separate DC power source

### Stainless Steel Mounting Back Box



To solve various height and uneven surface installation challenges, Essex offers the Stainless Steel Back Box. Designed for any Essex 12 Pad 3x4 Keypad, single gang PEB Series or Hand-E-Tap Switch.

- Dimensions: 5 3/8" x 3 5/8" x 1/2" to 1 3/4"
- Tilted 15° for wheelchair height installation
- Stainless Steel Construction
- Conduit knockout for surface mount installation

<u>Item No.</u>	<u>Description</u>
<b>2HNJ6</b>	BAK BOX-SGS, Single Gang Stainless Back Box

### Mullion Spacer Ring



The surface mount spacer ring is designed to simplify mullion mount installations. Constructed of black anodized aluminum, the spacer ring is for use with the narrow Hand-E-Wave, RoxProx or PEB Series.

- Dimensions: 4 1/2" x 1 3/4" x 3/4"

<u>Item No.</u>	<u>Description</u>
<b>32NF29</b>	Mullion spacer ring

For more information, please contact your Grainger Representative or visit [Grainger.com](http://Grainger.com)®

8SSP6656

AVAILABLE THROUGH

**GRAINGER**  
