

®
Dayton



Wet/Dry Vacuums

COMMERCIAL/INDUSTRIAL USE

Models 4YE65, 4YE66, 4YE68, 22XJ51

®
Dayton

**PLEASE READ AND SAVE
THESE INSTRUCTIONS.
READ CAREFULLY
BEFORE ATTEMPTING
TO ASSEMBLE, INSTALL,
OPERATE OR MAINTAIN THE
PRODUCT DESCRIBED.**

**PROTECT YOURSELF AND
OTHERS BY OBSERVING ALL
SAFETY INFORMATION. FAILURE
TO COMPLY WITH INSTRUCTIONS
COULD RESULT IN PERSONAL
INJURY AND/OR PROPERTY
DAMAGE! RETAIN INSTRUCTIONS
FOR FUTURE REFERENCE.**

**PLEASE REFER TO BACK COVER
FOR INFORMATION REGARDING
DAYTON'S WARRANTY
AND OTHER IMPORTANT
INFORMATION.**

Model #: _____

Serial #: _____

Purch. Date: _____

*Form 5S6826 / Printed in U.S.A.
07985 Version 2 08/2013
© 2013 Dayton Electric Manufacturing Co.
All Rights Reserved*

IMPORTANT SAFETY INSTRUCTIONS



**ALWAYS WEAR
EYE PROTECTION**

⚠ DANGER



Never operate this unit when flammable materials or vapors are present because electrical devices produce arcs or sparks that can cause a fire or explosion. NEVER OPERATE UNATTENDED!

When using an electrical appliance, basic precautions should always be followed, including the following: **READ ALL INSTRUCTIONS BEFORE USING THIS APPLIANCE.**

⚠ WARNING

TO REDUCE THE RISK OF FIRE, ELECTRIC SHOCK, OR INJURY:



1. Do not leave appliance when plugged in. Unplug from outlet when not in use and before servicing. Connect to a properly grounded outlet only. See Grounding Instructions.
2. Do not expose to rain—store indoors.
3. Do not allow to be used as a toy. Close attention is necessary when used by or near children.
4. Use only as described in this manual. Use only Manufacturer's recommended attachments.
5. Do not use with damaged cord or plug. If appliance is not working as it should, has been dropped, damaged, left outdoors or dropped into water, return it to a service center.
6. Do not: pull or carry by cord, use cord as a handle, close a door on cord or pull cord around sharp edges or corners. Do not run appliance over cord. Keep cord away from heated surfaces.
7. Do not unplug by pulling on cord. To unplug, grasp the plug, not the cord.
8. Do not handle plug or appliance with wet hands.
9. Do not put any object into openings. Do not use with any openings blocked; keep free of dust, lint, hair and anything that may reduce air flow.
10. Keep hair, loose clothing, fingers and all parts of body away from openings and moving parts.
11. Do not pick up anything that is burning or smoking, such as cigarettes, matches or hot ashes.
12. Do not use without dust bag and/or filters in place.
13. Turn off all controls before unplugging.
14. Use extra care when cleaning on stairs.
15. Do not use to pick up flammable or combustible liquids such as gasoline or use in areas where they may be present.
16. Do not use your cleaner as a sprayer of flammable liquids such as oil base paints, lacquers, household cleaners, etc.
17. Do not vacuum toxic, carcinogenic, combustible or other hazardous materials such as asbestos, arsenic, barium, beryllium, lead, pesticides, or other health endangering materials. Specially designed units are available for these purposes.
18. Do not pick up soot, cement, plaster or drywall dust without cartridge filter and collection filter bag in place. These are very fine particles that may pass through the foam and affect the performance of the motor or be exhausted back into the air. Additional collection filter bags are available.
19. Do not leave the cord lying on the floor once you have finished the cleaning job. It can become a tripping hazard.
20. Use special care when emptying heavily loaded tanks.
21. To avoid spontaneous combustion, empty tank after each use.
22. The operation of a utility vac can result in foreign objects being blown into eyes, which can result in eye damage. Always wear safety goggles when operating vacuum.
23. **STAY ALERT.** Watch what you are doing and use common sense. Do not use vacuum cleaner when you are tired, distracted or under the influence of drugs, alcohol, or medication causing diminished control.
24. **WARNING!** Do **NOT** use this vacuum cleaner to vacuum lead paint debris because this may disperse fine lead particles into the air. This vacuum cleaner is not intended for use under EPA Regulation 40 CFR Part 745 for lead paint material cleanup.

SAVE THESE INSTRUCTIONS

⚠ WARNING

DO NOT LEAVE VACUUM UNATTENDED WHEN IT IS PLUGGED IN AND/OR OPERATING. UNPLUG UNIT WHEN NOT IN USE.

GROUNDING INSTRUCTIONS

This appliance must be grounded. If it should malfunction or breakdown, grounding provides a path of least resistance for electric current to reduce the risk of electric shock. This appliance is equipped with a cord having an equipment-grounding conductor and grounding plug. The plug must be inserted into an appropriate outlet that is properly installed and grounded in accordance with all local codes and ordinances.

⚠ WARNING

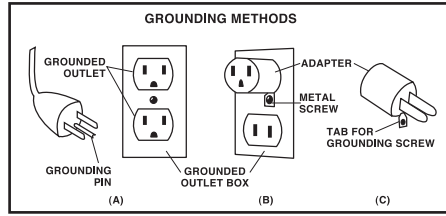


IMPROPER CONNECTION OF THE EQUIPMENT-GROUNDING CONDUCTOR CAN RESULT IN A RISK OF ELECTRIC SHOCK. CHECK WITH A QUALIFIED ELECTRICIAN OR SERVICE PERSON IF YOU ARE IN DOUBT AS TO WHETHER THE OUTLET IS PROPERLY GROUNDED. DO NOT MODIFY THE PLUG PROVIDED WITH THE APPLIANCE – IF IT WILL NOT FIT THE OUTLET HAVE A PROPER OUTLET INSTALLED BY A QUALIFIED ELECTRICIAN.

This appliance is for use on a nominal 120-volt circuit, and has a grounded plug that looks like the plug illustrated in **sketch A**. A temporary adaptor that looks like the adaptor illustrated in **sketches B and C** may be used to connect this plug to a 2-pole receptacle as shown in **sketch B** if a properly grounded outlet is not available. The temporary adaptor should be used only until a properly grounded outlet (**sketch A**) can be installed by a qualified electrician. The green colored rigid ear, lug or the like extending from the adaptor must be connected to a permanent ground such as a properly grounded outlet box cover. Whenever the

GROUNDING INSTRUCTIONS (CONTINUED)

adaptor is used, it must be held in place by a metal screw.



IN CANADA, THE USE OF A TEMPORARY ADAPTOR IS NOT PERMITTED BY THE CANADIAN ELECTRICAL CODE.

Make sure that the appliance is connected to an outlet having the same configuration as the plug. No adaptor should be used with this appliance.

⚠ WARNING IF THE CORD IS DAMAGED, IT MUST BE REPLACED BY A SPECIAL CORD OR ASSEMBLY AVAILABLE FROM THE MANUFACTURER OR HIS AUTHORIZED SERVICE AGENT.

EXTENSION CORDS

When using the appliance at a distance where an extension cord becomes necessary, a 3-conductor grounding cord of adequate size must be used for safety, and to prevent loss of power and overheating. Use the table to determine A.W.G. wire size required. To determine ampere rating of your vacuum, refer to name-plate located on motor housing/cover. Before using appliance, inspect power cord for loose or exposed wires and damaged insulation. Make any needed repairs or replacements before using your appliance. Use only three-wire outdoor extension cords which have three-prong grounding-type plugs and three-pole receptacles which accept the extension cord's plug.

Volts	Total length of cord in feet			
	25	50	100	150
120V				
Ampere Rating More Than	AWG			
0 - 6	18	16	16	14
6 - 10	18	16	14	12
10 - 12	16	16	14	12
12 - 16	14	12	Not recommended	

NOTE: STATIC SHOCKS ARE COMMON IN DRY AREAS OR WHEN THE RELATIVE HUMIDITY OF THE AIR IS LOW. THIS IS ONLY TEMPORARY AND DOES NOT AFFECT THE USE OF THE APPLIANCE. TO REDUCE THE FREQUENCY OF STATIC SHOCKS IN YOUR HOME, THE BEST REMEDY IS TO ADD MOISTURE TO THE AIR WITH A CONSOLE OR INSTALLED HUMIDIFIER.

SPECIFICATIONS

	4YE65	4YE66	4YE68	22XJ51
Tank Style	Plastic	Plastic	Plastic	Stainless Steel
Tank Capacity	6 Gal. (22.7 liters)	6 Gal. (22.7 liters)	10 Gal. (37.9 liters)	6 Gal. (22.7 liters)
Electrical Rating	120V, 60 Hz AC 8 Amps	120V, 60 Hz AC 7.4 Amps	120V, 60 Hz AC 7.4 Amps	120V, 60 Hz AC 7.4 Amps
Static Pressure	62" (157.5 cm)	80" (203.2 cm)	80" (203.2 cm)	80" (203.2 cm)
Air Movement	180 cfm (5.09 m ³ /min)	100 cfm (2.8 m ³ /min)	100 cfm (2.8 m ³ /min)	100 cfm (2.8 m ³ /min)
Certification	C US LISTED	C US LISTED	C US LISTED	C US LISTED

BEFORE YOU BEGIN



Tools Needed:

- Flathead screwdriver
- Safety glasses

UNPACKING

Unpack:

- Pull lid latches in an outward motion, remove tank cover and any accessories that may have been shipped in the tank.

Inspect:

- After unpacking the unit, carefully inspect for any damage that may have occurred during transit. Check for loose, missing or damaged parts. Shipping damage claims must be filed with the carrier.



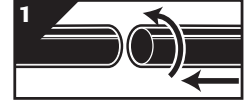
UNPACKING (CONTINUED)



See General Safety Instructions on Page 1 and 2, and Cautions and Warnings as shown.

ASSEMBLY INSTRUCTIONS

1. Attach caster system following the instructions and illustrations in this manual.
2. For model 22XJ51, attach side tank handles following the instructions and illustrations in this manual.
3. Before replacing tank cover, please refer to Dry Pick Up or Wet Pick Up Operation in this manual to ensure you have the proper filters installed for your cleaning operation.
4. Replace tank cover, and apply pressure with thumb to each latch until it snaps tightly in place. Make sure all lid latches are clamped securely.
5. Insert long machine hose end with locking-nut into inlet of tank and tighten. Do not over-tighten **(Figure 1)**.
6. Attach the extension wands to the accessory end of the hose. Twist slightly to tighten the connection **(Figure 1)**.
7. Attach one of the cleaning accessories (depending on your cleaning requirements) to the extension wands. Twist slightly to tighten the connection **(Figure 1)**.
8. Plug the cord into the wall outlet. Your cleaner is ready for use.
I = ON, O =OFF

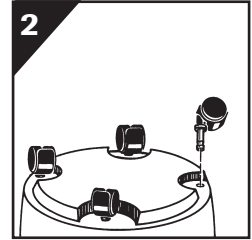


CASTER SYSTEM ASSEMBLY

Not all units are equipped with the same caster system. Follow the instructions, which apply to your specific unit.

With Casters Only (Model 4YE65, 4YE66)

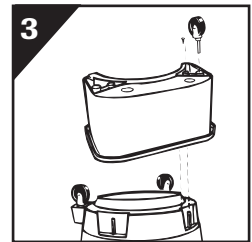
1. With cord disconnected from receptacle and tank cover removed, turn tank upside down so that the bottom is facing up.
2. If flat washers are included in hardware package place flat washer over stem of caster before installing casters into the tank. **NOTE:** Flat washers are not required with all units.
3. You will find four swivel stem casters in a plastic bag. Install them into the caster socket by inserting the casters into the hole, and applying pressure until you feel the caster snap into place **(Figure 2)**.



With Rear Caster Accessory Caddy (Model 4YE68)

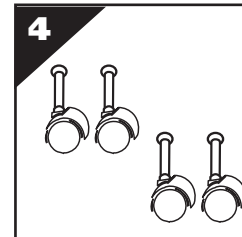
You will find four casters, two caster feet, an accessory caddy and four screws with your wet/dry vacuum.

1. With cord disconnected from receptacle and tank cover removed, turn tank upside down so that the bottom is facing up.
2. Insert two caster feet into adjacent slots at front of tank. Secure with screws provided.
3. Take accessory caddy and place into remaining slots at back of tank. Secure with screws provided **(Figure 3)**.
4. If flat washers are included in hardware package place flat washer over stem of caster before installing casters into feet or accessory caddy. **NOTE:** Flat washers are not required with all units.
5. Install casters into caddy and feet by inserting the caster stems into the holes provided. Apply pressure and twisting motion until casters snap into place.



With Caster Dolly (Model 22XJ51)

1. You will find four casters **(Figure 4)** with your wet/dry vacuum. Assemble as follows:
2. With cord disconnected from receptacle and tank cover removed, turn tank upside down so that bottom is facing up.
3. If the casters are not already installed in dolly, insert casters into bottom of dolly by placing stem of caster into holes provided. Apply pressure and twisting motion until casters snap into place **(Figure 5)**.
4. Return tank to upright position.



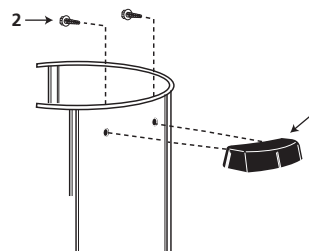
INSTALLATION INSTRUCTIONS

INSTALLING THE SIDE TANK HANDLES (Model 22XJ51)

(Not standard with all models)

Attach side handles with screws provided.

ITEM	DESCRIPTION
1	Side Tank Handle
2	# 10 x 3/4" Screw hex head



OPERATION INSTRUCTIONS

⚠ DANGER



This equipment incorporates parts such as switches, motors or the like that tend to produce arcs or sparks that can cause an explosion. Do not pick up flammable, combustible, or hot materials. Do not use around explosive liquids or vapors, as electrical devices produce arcs or sparks which can cause a fire or explosion - do not use at filling stations or anywhere gasoline is stored or dispensed.

⚠ DANGER

NEVER OPERATE UNATTENDED!



⚠ WARNING

ALWAYS WEAR EYE PROTECTION TO PREVENT ROCKS OR DEBRIS FROM BEING BLOWN OR RICOCHETING INTO THE EYES OR FACE WHICH CAN RESULT IN SERIOUS INJURY.

⚠ WARNING

ALWAYS DISCONNECT THE PLUG FROM THE WALL OUTLET BEFORE REMOVING THE TANK COVER.

⚠ CAUTION

Keep Filters Clean

The efficiency of these vacuum cleaners is largely dependent on the filter.

A clogged filter can cause overheating and possibly damage the vacuum cleaner.

Clean or replace filters regularly. Do not use the vacuum or filters for collecting hazardous or other health endangering materials.

NOTE: Never machine wash or dry filters.

DRY PICK UP OPERATION

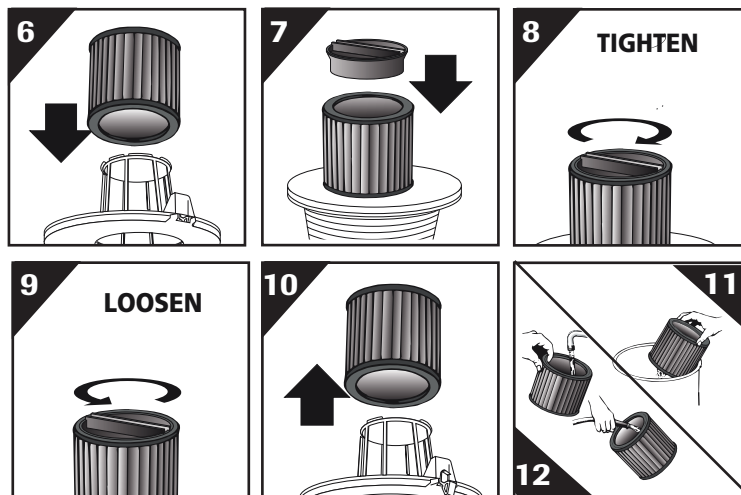
CARTRIDGE FILTER MAINTENANCE

⚠ NOTICE

This filter is made of high quality paper designed to stop small particles of dust. The filter can be used for wet or dry pick up. A dry filter is necessary to pick up dry material. If you use your vac to pick up dust when the filter is wet, the filter will clog quickly and be very difficult to clean. The filter may become saturated when picking up large quantities of liquid causing misting to appear in the exhaust air. At this time, you should dry or change the filter to eliminate this occurrence. Please handle the filter carefully when removing it for cleaning or when installing it. Check the filter for tears or small holes. Even a small hole can cause dust to be exhausted. Do not use a filter with holes or tears. Replace it immediately.

Installing & Cleaning:

1. Slide cartridge filter down over filter cage (Figure 6).
2. Place filter retainer on top of cartridge filter (Figure 7).
3. Hold onto base of lid cage with one hand and turn retainer clockwise to tighten (Figure 8).
4. To remove filter for cleaning, again hold onto base of lid cage with one hand and turn retainer counter clockwise to loosen (Figure 9).
5. Slide cartridge filter off filter cage (Figure 10).
6. Clean dry filter by tapping it on inside of waste can (Figure 11).
7. Clean wet filter by rinsing from the inside (Figure 12). (HEPA Cartridge rinse outside surface).
8. When wet (to prevent mold and/or mildew build-up), the cartridge filter should be removed and allowed to air dry for a 24-hour period before being reinstalled back onto the filter cage.



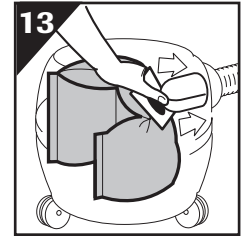
OPERATION INSTRUCTIONS (CONTINUED)

NOTE: When using the vacuum to pick up very fine dust such as sawdust or dry wall dust, it will be necessary to empty the tank and clean the filter at more frequent intervals to maintain maximum pick up power or upgrade to collection filter bags.

INSTALLING COLLECTION FILTER BAG

(Not standard on all models)

1. Grasp cardboard collar firmly and slide rubber guard on to inlet fitting, as firmly as possible (**Figure 13**).
2. When secured in place, expand and position bag around inside of tank.
3. Use for dry pick up only.



WET PICK UP OPERATION

Remove the dry filters plus all dirt and debris found in the tank assembly. Wet pick up requires only the foam sleeve or cartridge filter to be in place. Do not use dry filters for wet pick up. When picking up several tanks full of liquid, the filter will become saturated and misting may appear in the exhaust air. At this time, you should dry the filter or change to a dry filter to eliminate the misting and possible dripping of liquid around the lid. After completing a wet pick up job, raise the hose to drain into tank before shutting off the vac. The interior of the tank should be periodically rinsed clean.

The foam sleeve should be cleaned periodically as described in the following steps:

1. Always disconnect the plug from the wall receptacle before removing the tank cover. Remove foam sleeve by sliding it up and off the lid cage.
2. Shake excess dust off sleeve with rapid up and down movement.
3. Hold sleeve under running water rinsing from the inside. A water wash is not always required, depending on the condition of the sleeve.
4. Gently wring out excess water, blot sleeve with a clean towel and allow foam sleeve to dry. The foam sleeve is now ready to be reinstalled on the lid cage.

NOTE: Wet pick up accessories should be washed periodically with soap and water, especially after picking up wet, sticky liquids. Picking up detergent or cleaners that create foam or suds can defeat the vacuums filtration. This could cause foreign material to pass into the motor impeller area and shorten motor life. This is not normal use and is not covered by product warranty.

AUTOMATIC SUCTION SHUT-OFF

This vacuum is equipped with an automatic suction shut-off that operates when picking up liquids. As the level of the liquid rises in the tank, an internal float rises until it seats itself against a seal at the intake of the motor, shutting off suction. When this happens, the motor will develop a higher than normal pitch noise and the suction is drastically reduced. If this occurs, turn the unit off immediately. Failure to turn unit off after float rises and shuts off suction will result in extensive damage to the motor. To continue use, empty the liquid waste from the tank as outlined in the paragraph below. (**Emptying Tank**).

NOTE: If accidentally tipped over, the vacuum could lose suction. If this occurs, turn unit off and place vac in upright position. This will allow the float to return to its normal position, and you will be able to continue operation.

CAUTION

EMPTYING TANK

Use special care when emptying heavily loaded tanks. Your Wet/Dry Vacuum may be emptied of liquid waste by removing the tank cover. To empty, switch off the vac and remove the plug from the wall receptacle. Remove the tank cover and empty the tank.

Note: For those models with a tank drain, tank can be emptied by removing drain cap and draining liquid waste into a suitable drain.

TROUBLESHOOTING GUIDE

Symptom	Possible Cause(s)	Corrective Action
Parts/accessories missing	Packed in tank	Check in tank
Vacuum cleaner will not start	1. Defective switch 2. Defective motor	1. Replace 2. Replace
Dust discharging from exhaust	1. Filter not installed/not installed properly 2. Filter damaged 3. Filter clogged or dust is too fine 4. Filter not functional	1. Properly install filter 2. Replace filter 3. Use more efficient filter 4. Clean or replace filter
Loss of suction	1. Loose hose connection 2. Filter clogged 3. Full tank 4. Hole in hose	1. Tighten hose connection 2. Clean or replace filter 3. Empty tank 4. Replace hose

MAINTENANCE INSTRUCTIONS**WARNING**

Be sure to disconnect power supply before attempting to service or remove any components.

STORAGE

Before storing the vacuum cleaner, always empty and clean the tank. Never allow liquids to sit in the tank for any extended period of time. **Always store the vacuum cleaner indoors.**

LUBRICATION

No lubrication is necessary as the motor is equipped with lifetime lubricated bearings.

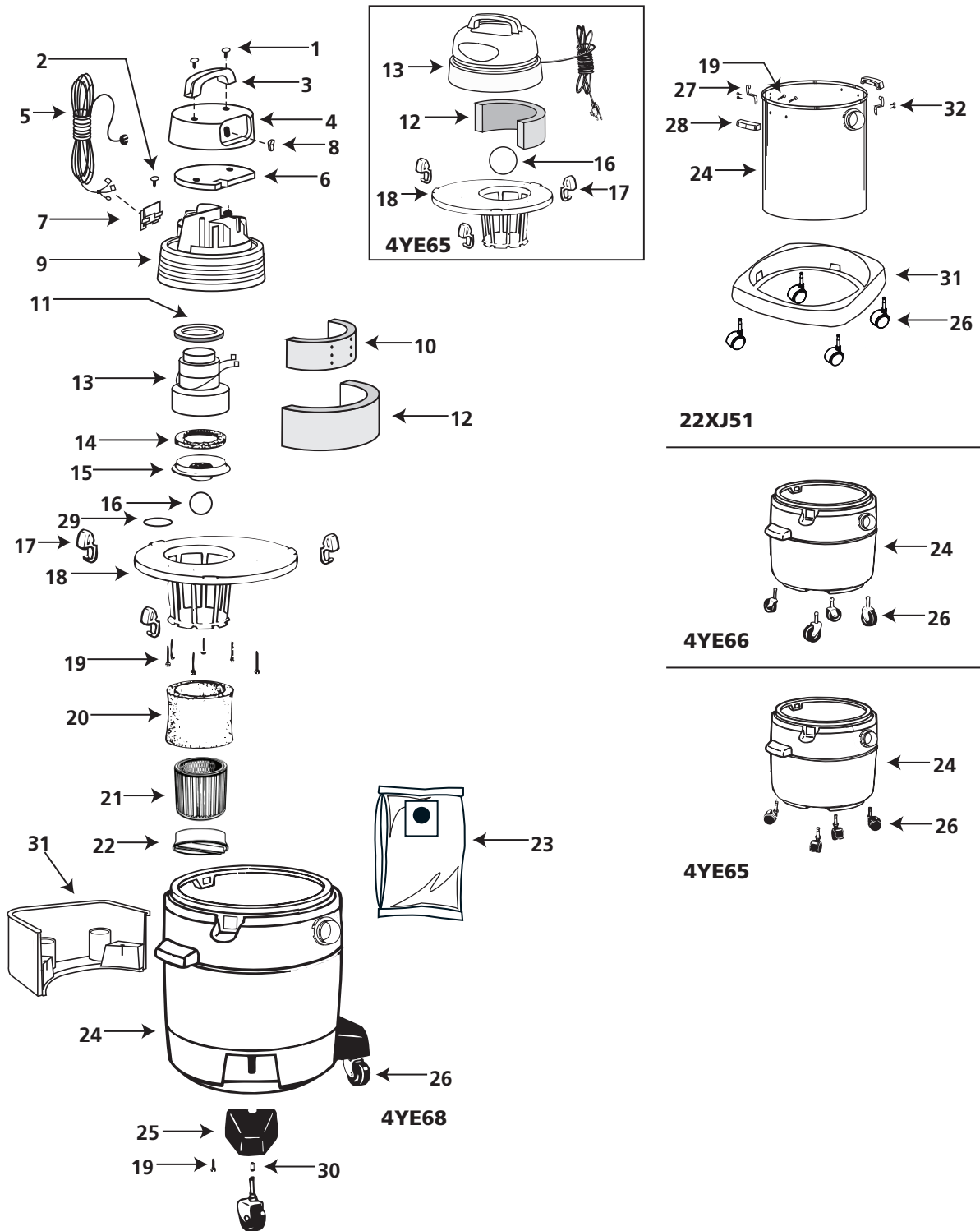
SERVICE

Do not attempt to service your Dayton wet/dry vacuum cleaner beyond that described in this manual. Refer all other servicing to a qualified service center.

**WARNING**

IF ANY OF THE MOTOR HOUSING PARTS SHOULD BECOME DETACHED OR BROKEN, EXPOSING THE MOTOR OR ANY OTHER ELECTRICAL COMPONENTS, OPERATION SHOULD BE DISCONTINUED IMMEDIATELY TO AVOID PERSONAL INJURY OR FURTHER DAMAGE TO THE VACUUM. REPAIRS SHOULD BE MADE BEFORE REUSING THE VACUUM.

REPAIR PARTS ILLUSTRATION FOR 4YE65, 4YE66, 4YE68, 22XJ51



For Repair Parts, call 1-800 Grainger

24 hours a day – 365 days a year

Please provide following information:

- Model number
- Serial number (if any)
- Part description and number as shown in parts list

REPAIR PARTS LIST FOR 4YE65, 4YE66, 4YE68, 22XJ51

Ref. No.	Description	Part Number for Models:				Qty.
		4YE65	4YE66	22XJ51	4YE68	
1	Screw truss head 1/4" x 3/4" type AB	N/A	*	*	*	2
2	Screw #8 x 1/2" Ph pan hd type AB	N/A	*	*	*	1
3	Top handle	N/A	2410500	2410500	2410500	1
4	Motor housing cover	N/A	1944960	1945291	1944962	1
5	Power cord	N/A	4152700	4152700	4152700	1
6	Foam insert cover	N/A	2412505	2412505	2412505	1
7	Cord retainer	N/A	2411107	2411107	2411107	1
8	Switch	N/A	8231900	8231900	8231900	1
9	Motor housing	N/A	2410714	2410714	2410714	1
10	Inner housing acoustical foam	N/A	1290400	1290400	1290400	1
11	Upper motor gasket	N/A	2070000	2070000	2070000	1
12	Acoustical foam, outer housing	1290508	1290503	1290503	1290503	1
13	Motor/Power unit	=1UND7	†1944748	†1944748	†1944748	1
14	Lower motor gasket	N/A	2071600	2071600	2071600	1
15	Grid plate	N/A	8860700	8860700	8860700	1
16	Ball float	0081100	0081100	0081100	0081100	1
17	Latch	8550101	8550101	N/A	8550101	3
18	Lid cage assembly	8965724	1944676 (includes 29)	1945138 (includes 29)	1944676 (includes 29)	1
19	Screw #10 x 3/4"	*	*	*	*	7/6/10/10
20	Foam sleeve	5X879A	5X879A	5X879A	5X879A	1
21	Cartridge filter	2W435	N/A	N/A	N/A	1
	HEPA cartridge filter	N/A	4TB93	4TB93	4TB93	1
22	Filter retainer	3008000	3008000	3008000	3008000	1
23	Collection filter bag (pkg of 5)	3UP64	3UP64	3UP65	3UP66	1
24	Tank assembly	8492297	8458097	1043897	8497897	1
25	Caster Foot	N/A	N/A	N/A	4913896	2
26	Caster	6774200	6775200	6772000	6775200	4
27	Metal tank clamp	N/A	N/A	0140000	N/A	3
28	Handles (set of 2) with hardware	N/A	N/A	9355196	N/A	1
29	Strip gasket	N/A	2071100	2071100	2071100	1
30	Caster Retainer	N/A	N/A	N/A	8565750	2
31	Accessory caddy/Caster Dolly	N/A	N/A	9381700	8564003	1
32	Rivet	N/A	N/A	0300299	N/A	6
Δ	8' x 1-1/4" Hose (2.44m x 3.18cm)	2Z290C	N/A	N/A	N/A	1
Δ	10' x 1-1/4" Hose (3.04m x 3.18cm)	N/A	5350003	5350003	N/A	1
Δ	1-1/4" dia. Plastic wands (3.18cm)	3770420	N/A	N/A	N/A	2
Δ	1-1/4" dia. Chrome wands (3.18cm)	N/A	3771100	3771100	N/A	2
Δ	Dual surface selector nozzle	0075804	0075804	0075804	N/A	1
Δ	10" Wet/Dry Floor nozzle (25.4cm)	7872534	N/A	N/A	N/A	1
Δ	10' x 1-1/2" hose (3.04m x 3.81cm)	N/A	N/A	N/A	0270006	1
Δ	1-1/2" dia. Chrome upper wands (3.81cm)	N/A	N/A	N/A	3261000	1
Δ	1-1/2" dia. Chrome lower wands (3.81cm)	N/A	N/A	N/A	3261100	1
Δ	14" Plastic master nozzle (35.56cm)	N/A	N/A	N/A	7281400	1
Δ	14" Squeegee insert (35.56cm)	N/A	N/A	N/A	7111400	1
Δ	14" Carpet insert (35.56cm)	N/A	N/A	N/A	7331400	1
Δ	14" Brush insert (35.56cm)	N/A	N/A	N/A	7341400	1
Δ	Crevice tool	0313001	0313001	0313001	2NVE8	1
Δ	Round dusting brush	0290400	0290400	0290400	2NVE6	1
Δ	Utility nozzle	0303501	0303501	0303501	2NVE7	1

- (*) Standard hardware item, available locally.
- (†) Motor brush kit 1940053.
- (Δ) Not Shown.
- (⇒) 4YE65 Replacement parts not available for power unit.

Do not attempt to service your Dayton vacuum beyond that described in the Operating Instructions and Parts Manual.

DAYTON ONE-YEAR LIMITED WARRANTY

DAYTON ONE-YEAR LIMITED WARRANTY. All Dayton® product models covered in this manual are warranted by Dayton Electric Mfg. Co. ("Dayton") to the original user against defects in workmanship or materials under normal use for one year after date of purchase. If the Dayton product is part of a set, only the portion that is defective is subject to this warranty. Any product or part which is determined to be defective in material or workmanship and returned to an authorized service location, as Dayton or Dayton's designee designates, shipping costs prepaid, will be, as the exclusive remedy, repaired or replaced with a new or reconditioned product or part of equal utility or a full refund given, at Dayton's or Dayton's designee's option, at no charge. For limited warranty claim procedures, see "Warranty Service" below. This warranty is void if there is evidence of misuse, mis-repair, mis-installation, abuse or alteration. This warranty does not cover normal wear and tear of Dayton products or portions of them, or products or portions of them which are consumable in normal use. This limited warranty gives purchasers specific legal rights, and you may also have other rights which vary from jurisdiction to jurisdiction.

WARRANTY DISCLAIMERS AND LIMITATIONS OF LIABILITY RELATING TO ALL CUSTOMERS FOR ALL PRODUCTS

LIMITATION OF LIABILITY. TO THE EXTENT ALLOWABLE UNDER APPLICABLE LAW, DAYTON'S LIABILITY FOR CONSEQUENTIAL AND INCIDENTAL DAMAGES IS EXPRESSLY DISCLAIMED. DAYTON'S LIABILITY IN ALL EVENTS IS LIMITED TO AND SHALL NOT EXCEED THE PURCHASE PRICE PAID.

WARRANTY DISCLAIMER. A DILIGENT EFFORT HAS BEEN MADE TO PROVIDE PRODUCT INFORMATION AND ILLUSTRATE THE PRODUCTS IN THIS LITERATURE ACCURATELY; HOWEVER, SUCH INFORMATION AND ILLUSTRATIONS ARE FOR THE SOLE PURPOSE OF IDENTIFICATION, AND DO NOT EXPRESS OR IMPLY A WARRANTY THAT THE PRODUCTS ARE MERCHANTABLE, OR FIT FOR A PARTICULAR PURPOSE, OR THAT THE PRODUCTS WILL NECESSARILY CONFORM TO THE ILLUSTRATIONS OR DESCRIPTIONS. EXCEPT AS PROVIDED BELOW, NO WARRANTY OR AFFIRMATION OF FACT, EXPRESSED OR IMPLIED, OTHER THAN AS STATED IN THE "LIMITED WARRANTY" ABOVE IS MADE OR AUTHORIZED BY DAYTON.

PRODUCT SUITABILITY. MANY JURISDICTIONS HAVE CODES AND REGULATIONS GOVERNING SALES, CONSTRUCTION, INSTALLATION, AND/OR USE OF PRODUCTS FOR CERTAIN PURPOSES, WHICH MAY VARY FROM THOSE IN NEIGHBORING AREAS. WHILE ATTEMPTS ARE MADE TO ASSURE THAT DAYTON PRODUCTS COMPLY WITH SUCH CODES, DAYTON CANNOT GUARANTEE COMPLIANCE, AND CANNOT BE RESPONSIBLE FOR HOW THE PRODUCT IS INSTALLED OR USED. BEFORE PURCHASE AND USE OF A PRODUCT, REVIEW THE SAFETY/SPECIFICATIONS, AND ALL APPLICABLE NATIONAL AND LOCAL CODES AND REGULATIONS, AND BE SURE THAT THE PRODUCT, INSTALLATION, AND USE WILL COMPLY WITH THEM.

CONSUMERS ONLY. CERTAIN ASPECTS OF DISCLAIMERS ARE NOT APPLICABLE TO CONSUMER PRODUCTS SOLD TO CONSUMERS; (A) SOME JURISDICTIONS DO NOT ALLOW THE EXCLUSION OR LIMITATION OF INCIDENTAL OR CONSEQUENTIAL DAMAGES, SO THE ABOVE LIMITATION OR EXCLUSION MAY NOT APPLY TO YOU; (B) ALSO, SOME JURISDICTIONS DO NOT ALLOW A LIMITATION ON HOW LONG AN IMPLIED WARRANTY LASTS, SO THE ABOVE LIMITATION MAY NOT APPLY TO YOU; AND (C) BY LAW, DURING THE PERIOD OF THIS LIMITED WARRANTY, ANY IMPLIED WARRANTIES OF MERCHANTABILITY OR FITNESS FOR A PARTICULAR PURPOSE APPLICABLE TO CONSUMER PRODUCTS PURCHASED BY CONSUMERS, MAY NOT BE EXCLUDED OR OTHERWISE DISCLAIMED.

THIS LIMITED WARRANTY ONLY APPLIES TO UNITED STATES PURCHASERS FOR DELIVERY IN THE UNITED STATES.

WARRANTY SERVICE

To obtain warranty service if you purchased the covered product directly from W.W. Grainger, Inc. ("Grainger"), (i) write or call or visit the local Grainger branch from which the product was purchased or another Grainger branch near you (see www.grainger.com for a listing of Grainger branches); or (ii) contact Grainger by going to www.grainger.com and clicking on the "Contact Us" link at the top of the page, then clicking on the "Email us" link; or (iii) call Customer Care (toll free) at 1-888-361-8649. To obtain warranty service if you purchased the covered product from another distributor or retailer, (i) go to www.grainger.com for Warranty Service; (ii) write or call or visit a Grainger branch near you; or (iii) call Customer Care (toll free) at 1-888-361-8649. In any case, you will need to provide, to the extent available, the purchase date, the original invoice number, the stock number, a description of the defect, and anything else specified in this Dayton One-Year Limited Warranty. You may be required to send the product in for inspection at your cost. You can follow up on the progress of inspections and corrections in the same ways. Title and risk of loss pass to buyer on delivery to common carrier, so if product was damaged in transit to you, file claim with carrier, not retailer, Grainger or Dayton. For warranty information for purchasers and/or delivery outside the United States, please use the following applicable contact information:

**Dayton Electric Mfg. Co.,
100 Grainger Parkway, Lake Forest, IL 60045 U.S.A.
or call +1-888-361-8649**