

Please read and save these instructions. Read carefully before attempting to assemble, install, operate or maintain the products described. Protect yourself and others by observing all safety information. Failure to comply with instructions could result in personal injury and/or property damage! Retain instructions for future reference.

Dayton® Wet/Dry Vacuums

COMMERCIAL / INDUSTRIAL USE

Description

The Dayton wet/dry vacuum cleaners are for vacuuming wet and dry non-combustible materials. Equipped with powerful high-air flow, permanently lubricated, single-stage by-pass motors. Features: motor housing, blower port, larger tank drains, long power cords, convenient on-board tool storage and rugged dent resistant, rust proof plastic tanks. Equipped with easy roll casters and large wheel dolly systems. Includes versatile deluxe accessory make-up (See Parts List). Efficient filtration make-up (See Parts List). cULus Listed.



Specifications

Model	Tank Style	Tank Capacity	Peak HP	Electrical Rating	Static Pressure	Air Movement	Filters
3VE22	Plastic	18 (68.1)	6.5	120V, 50/60 Hz AC 12 Amps	60 (152.4)	200 (5.7)	Cartridge, Foam Sleeve & Collection Bag
4TB87A	Plastic	18 (68.1)	6.5	120V, 50/60 Hz AC 12 Amps	60 (152.4)	195 (5.5)	Cartridge & Foam Sleeve
1UG91C	Plastic	22 (83.3)	6.5	120V, 50/60 Hz AC 12 Amps	60 (152.4)	210 (5.9)	Cartridge, Foam Sleeve & Collection Bag
2RPD8	Plastic	32 (121)	6.5	120V, 50/60 Hz AC 12 Amps	60 (152.4)	210 (5.9)	Cartridge & Foam Sleeve

IMPORTANT SAFETY INSTRUCTIONS



ALWAYS WEAR EYE PROTECTION



DANGER



Never operate this unit when flammable materials or vapors are present because electrical devices produce arcs or sparks that can cause a fire or explosion. NEVER

OPERATE UNATTENDED!

When using an electrical appliance, basic precautions should always be followed, including the following: **READ ALL INSTRUCTIONS BEFORE USING THIS APPLIANCE.**



TO REDUCE THE RISK OF FIRE, ELECTRICAL SHOCK OR INJURY:

1. Do not leave appliance when plugged in.



Unplug from outlet when not in use and before servicing. Connect to a properly grounded outlet only. See Grounding Instructions.



2. Do not expose to rain—store indoors.
3. Do not allow to be used as a toy. Close attention is necessary when used by or near children.

4. Use only as described in this manual. Use only Manufacturer's recommended attachments.
5. Do not use with damaged cord or plug. If appliance is not working as it should, has been dropped, damaged, left outdoors or dropped into water, return it to a service center.
6. Do not: pull or carry by cord, use cord as a handle, close a door on cord or pull cord around sharp edges or corners. Do not run appliance over cord. Keep cord away from

7. heated surfaces.
7. Do not unplug by pulling on cord. To unplug, grasp the plug, not the cord.
8. Do not handle plug or appliance with wet hands.
9. Do not put any object into openings. Do not use with any openings blocked; keep free of dust, lint, hair and anything that may reduce air flow.
10. Keep hair, loose clothing, fingers and all parts of body away from openings and moving parts.
11. Do not pick up anything that is burning or smoking, such as cigarettes, matches or hot ashes.
12. Do not use without dust bag and/or filters in place.
13. Turn off all controls before unplugging.
14. Use extra care when cleaning on stairs.
15. Do not use to pick up flammable or combustible liquids such as gasoline or use in areas where they may be present.
16. Do not use your cleaner as a sprayer of flammable liquids such as oil base paints,

Dayton® Wet/Dry Vacuums

ENGLISH

IMPORTANT SAFETY INSTRUCTIONS (CONTINUED)

- lacquers, household cleaners, etc.
17. Do not vacuum toxic, carcinogenic, combustible or other hazardous materials such as asbestos, arsenic, barium, beryllium, lead, pesticides, or other health endangering materials. Specially designed units are available for these purposes.
 18. Do not pick up soot, cement, plaster or drywall dust without cartridge filter and collection filter bag in place. These are very fine particles that may pass through the foam and affect the performance of the motor or be exhausted back into the air. Additional collection filter bags are available.
 19. Do not leave the cord lying on the floor once you have finished the cleaning job. It can become a tripping hazard.
 20. Use special care when emptying heavily loaded tanks.
 21. To avoid spontaneous combustion, empty tank after each use.
 22. The operation of a utility vac can result in foreign objects being blown into eyes, which can result in eye damage. Always wear safety goggles when operating vacuum.
 23. **STAY ALERT.** Watch what you are doing and use common sense. Do not use vacuum cleaner when you are tired, distracted or under the influence of drugs, alcohol, or medication causing diminished control.
 24. **WARNING!** Do **NOT** use this vacuum cleaner to vacuum lead paint debris because this may disperse fine lead particles into the air. This vacuum cleaner is not intended for use under EPA Regulation 40 CFR Part 745 for lead paint material cleanup.

SAVE THESE INSTRUCTIONS

WARNING DO NOT LEAVE VACUUM UNATTENDED WHEN IT IS PLUGGED IN AND/OR OPERATING. UNPLUG UNIT WHEN NOT IN USE.

GROUNDING INSTRUCTIONS

This appliance must be grounded. If it should malfunction or breakdown, grounding provides a path of least resistance for electric current to reduce the risk of electric shock. This appliance is equipped with a cord having an equipment-grounding conductor and grounding plug. The plug must be inserted into an appropriate outlet that is properly installed and grounded in accordance with all local codes and ordinances.

WARNING



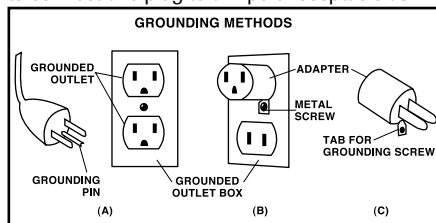
IMPROPER CONNECTION OF THE EQUIPMENT-GROUNDING CONDUCTOR CAN RESULT IN A RISK OF ELECTRIC SHOCK. CHECK WITH A QUALIFIED

ELECTRICIAN OR SERVICE PERSON IF YOU ARE IN DOUBT AS TO WHETHER THE OUTLET IS PROPERLY GROUNDED. DO NOT MODIFY THE PLUG PROVIDED WITH THE APPLIANCE—IF IT WILL NOT FIT THE OUTLET, HAVE A PROPER OUTLET INSTALLED BY A

QUALIFIED ELECTRICIAN.

This appliance is for use on a nominal 120-volt circuit, and has a grounded plug that looks like the plug illustrated in **sketch A**.

A temporary adapter that looks like the adapter illustrated in **sketches B and C** may be used to connect this plug to a 2-pole receptacle as



shown in **sketch B** if a properly grounded outlet is not available. The temporary adapter should be used only until a properly grounded outlet (**sketch A**) can be installed by a qualified electrician. The green colored rigid ear, lug or the like extending from the adapter must be connected to a permanent ground such as a properly grounded outlet box cover. Whenever

the adapter is used, it must be held in place by a metal screw.

IN CANADA, THE USE OF A TEMPORARY ADAPTER IS NOT PERMITTED BY THE CANADIAN ELECTRICAL CODE. Make sure that the appliance is connected to an outlet having the same configuration as the plug. No adapter should be used with this appliance.

WARNING

IF THE CORD IS DAMAGED, IT MUST BE REPLACED BY A SPECIAL CORD OR ASSEMBLY AVAILABLE FROM THE MANUFACTURER OR HIS AUTHORIZED SERVICE AGENT.

Models 3VE22, 4TB87A, 1UG91C and 2RPD8

EXTENSION CORDS

When using the appliance at a distance where an extension cord becomes necessary, a 3-conductor grounding cord of adequate size must be used for safety and to prevent loss of power and overheating. Use the table below to determine A.W.G. wire size required. To determine ampere rating of your vacuum, refer to nameplate located on motor cover/housing. Before using appliance, inspect power cord for loose or exposed wires and damaged insulation. Make any needed repairs or replacements before using your appliance. Use

only three-wire outdoor extension cords which have three-prong grounding-type plugs and three-pole receptacles which accept the extension cord's plug. When vacuuming liquids, be sure the extension cord connection does not come in contact with the liquid.

NOTE: STATIC SHOCKS ARE POSSIBLE IN DRY AREAS OR WHEN THE RELATIVE HUMIDITY OF THE AIR IS LOW. THIS IS ONLY TEMPORARY AND DOES NOT AFFECT THE USE OF THE VACUUM CLEANER. TO REDUCE

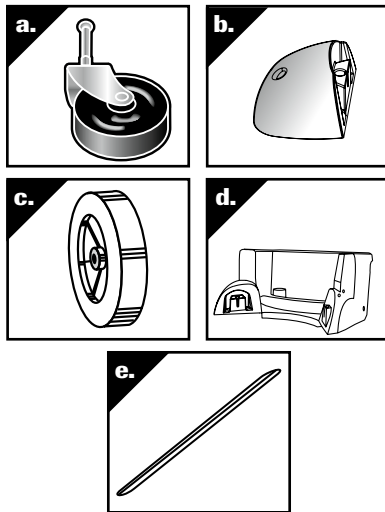
THE FREQUENCY OF STATIC SHOCKS IN YOUR HOME, THE BEST REMEDY IS TO ADD MOISTURE TO THE AIR WITH A CONSOLE OR INSTALLED HUMIDIFIER.

Volts	Total length of cord in feet			
	25	50	100	150
120V	AWG			
Ampere Rating More Than	Not More Than			
0 - 6	18	16	16	14
6 - 10	18	16	14	12
10 - 12	16	16	14	12
12 - 16	14	12	Not recommended	

Unpacking

1. Remove vacuum cleaner and all accessories from the carton.
2. Important: Open tank cover by pushing latches or clamps outward with thumbs and remove any accessories that may have been shipped in the tank.
3. Assemble dolly or caster system following instructions.
4. Before replacing cover, please refer to Dry Pick Up or Wet Pick Up Operation to ensure proper filter installation.
5. Replace cover and make sure latches or clamps are secured over raised area of tank cover.

Assembly



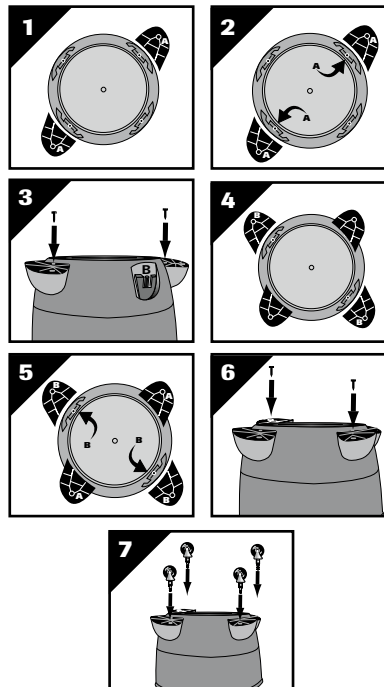
CASTER SYSTEM ASSEMBLY

On model 3VE22

You will find four caster feet (B), four casters (A) and four screws with your wet/dry vacuum. Assemble as follows:

1. With cord disconnected from receptacle and tank cover removed, turn tank upside down so

- that bottom is facing up.
2. With front of tank facing you, take caster feet marked with the letter A (Figure 1) and place in slots on left front and right rear of tank also marked with the letter A (Figure 2). Secure with screws provided (Figure 3).
3. Take caster feet marked with the letter B (Figure 4) and place in slots on right front and left rear of tank also marked with the letter B (Figure 5). Secure with screws provided (Figure 6).
4. If flat washers are included in hardware package place flat washer over stem of caster before installing casters into feet. **NOTE:** Flat washers are not required with all units.
5. Insert casters into feet by placing stem of caster into holes provided. Apply pressure and twisting motion until casters snap into place (Figure 7). Return tank to upright position.



REAR WHEEL/CASTER DOLLY/TOOL HOLDER AND FRONT CASTER FEET ASSEMBLY

On models 4TB87A, 1UG91C and 2RPD8 two casters (a.), two caster feet (b.), two wheels (c.), one axle (e.), rear wheel dolly/tool holder (d.) and four screws. Assemble as follows:

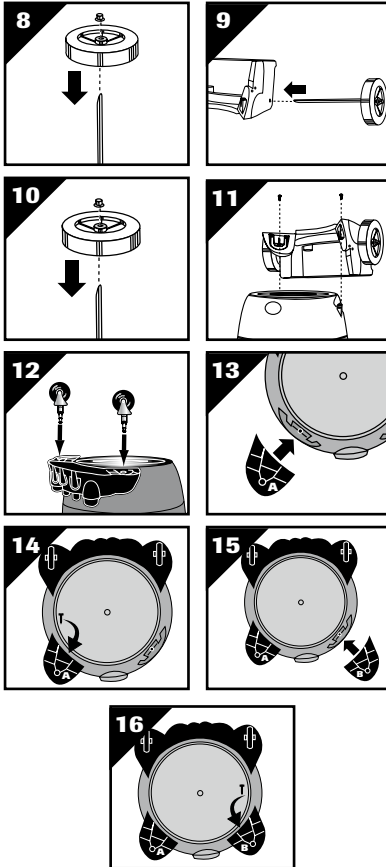
1. With cord disconnected from receptacle and tank cover removed, turn tank upside down so that the bottom is facing up. **NOTE:** Model 2RPD8 has an adapter between lid assembly and tank. This can be removed for ease of use during caster dolly assembly and to empty tank. Replace to return to normal operation.
2. Place axle upright on a hard surface and hammer on (1) cap nut. Place (1) wheel on axle and slide down to cap nut (Figure 8). Be sure flat side of wheel hub is facing outward.
3. Slide axle through holes provided in dolly/basket (Figure 9).
4. Slide remaining wheel onto axle and hammer on second cap nut (Figure 10).
5. Take rear wheel/caster dolly assembly and place into slots (on rear of tank opposite of drain) and secure with screws provided (Figure 11).
6. Insert casters into the under side of rear caster dolly pushing until casters snap into place (Figure 12).
7. With tank drain facing you, take caster foot marked with the letter A (Figure 13) and place in slot on left side of tank also marked with the letter A and secure with screw provided (Figure 14). Insert caster, if needed.
8. Take caster foot marked with the letter B (Figure 15) and place in slot on right side of tank also marked with the letter B and secure with screw provided (Figure 16) Insert caster, if needed.
9. Return tank to upright position.

ENGLISH

Dayton® Wet/Dry Vacuums

ENGLISH

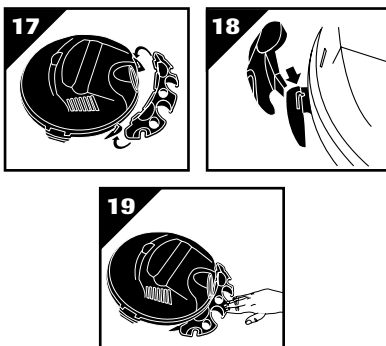
Assembly (continued)



TOOL HOLDER

(Not standard with all models)

1. With rear of unit facing you, take tool holder and position it with tabs facing rear of unit (Figure 17).
2. Place "J" shaped tabs into the slots on cord wraps (Figure 18).
3. Press down until tabs snap into place.
4. Press down on center of tool holder until tab latches on bottom of lid (Figure 19).



Installation

INSTALLING THE CARRIAGE HANDLE

On model 4TB87A, 1UG91C and 2RPD8 (Figure 20)

Stand vacuum right side up. Place metal carriage handle outside of tank and under the side carrying handles. Be sure to spread the ends of the carriage handles when assembling to prevent damage to the tank. Align holes of carriage handle to holes in tank and fasten tightly with screws, washers and nuts provided. The sealing washer and screw have a close fitting tolerance. Rubber side of sealing washer should fit against inside wall of tank. Failure to properly install rubber washer could result in water leakage or loss of performance. Replace the tank cover and clamp the lid latches securely.

NOTE: For model 2RPD8, screws affix metal carriage handle to tank under bottom of side carry handles.

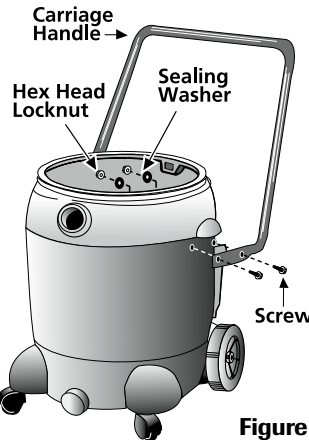


Figure 20

Operation

⚠ DANGER



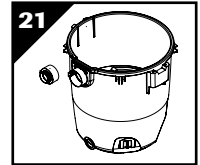
This equipment incorporates parts such as switches, motors or the like that tend to produce arcs or sparks that can cause an explosion. Do not pick up flammable, combustible, or hot materials. Do not use around explosive liquids or vapors, as electrical devices produce arcs or sparks



which can cause a fire or explosion - do not use at filling stations or anywhere gasoline is stored or dispensed.

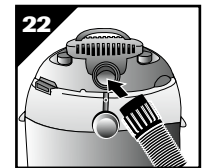
⚠ DANGER NEVER OPERATE UNATTENDED!

Model 2RPD8 features a unique multi size inlet. With inlet reducer in place, vacuum tank can accept standard and lock on 1.25" to 2.5" diameter hose. With inlet reducer removed, vacuum tank can accept optional 3.5" diameter hose (Figure 21).



BLOWER FEATURE

This vacuum can be used as a powerful blower. To use your unit as a blower, unscrew blower port cover located on the backside of the motor housing (Figure 22). The blower port cover is equipped with a retaining strap to prevent loss of the port cover while blower is in use. Insert hose end with locking-nut into blower port of tank and tighten. For maximum blower performance attach concentrator nozzle to accessory end of hose. Caution should be used when using a blower due to the powerful force of air when using certain attachments.



⚠ WARNING

ALWAYS WEAR EYE PROTECTION TO PREVENT ROCKS OR DEBRIS FROM BEING BLOWN OR RICOCHETING INTO THE EYES OR FACE WHICH CAN RESULT IN SERIOUS INJURY.

⚠ WARNING

ALWAYS DISCONNECT THE PLUG FROM THE WALL OUTLET BEFORE REMOVING THE TANK COVER.

⚠ CAUTION

Keep Filters Clean

The efficiency of these vacuum cleaners is largely dependent on the filter.

A clogged filter can cause overheating and possibly damage the vacuum cleaner.

Clean or replace filters regularly. Do not use the vacuum or filters for collecting hazardous or other health endangering materials.

NOTE: Never machine wash or dry filters.

Models 3VE22, 4TB87A, 1UG91C and 2RPD8

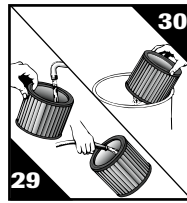
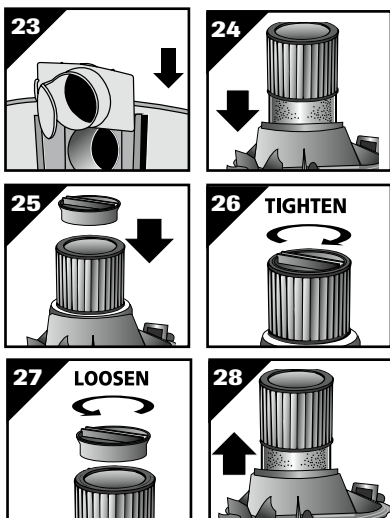
Operation (continued)

DRY PICK UP OPERATION

Make sure inlet deflector is fully inserted into deflector guide on inside of tank. If it is not, install inlet deflector by sliding it downward into slot on deflector guide (**Figure 23**). **NOTE:** Hose must be removed before inlet deflector can be inserted into or removed from deflector guide. Opening on inlet deflector can face either side of tank. Inlet deflector should always be in place for any type of cleaning. With the tank cover in an upside down position, slide the cartridge filter down over the lid cage, pushing until the filter seals against cover (**Figure 24**).

NOTE: Foam sleeve does not need to be removed for dry pick up. Place the filter retainer into the top of the cartridge filter, holding the tank cover with one hand, turn the handle on the filter retainer clockwise to tighten, locking the filter into place (**Figures 25 & 26**). To remove the filter for cleaning, again hold the tank cover and turn the filter retainer counter-clockwise to loosen and remove, slide the cartridge filter off the lid cage (**Figures 27 & 28**). To clean the cartridge filter shake or brush off excess dirt or rinse (from the inside of the filter) with water, dry completely (approximately 24 hours) and re-install (**Figures 29 & 30**). Better quality filtration is required for finer dry materials. Collection filter bags are recommended for very fine materials such as dry wall dust.

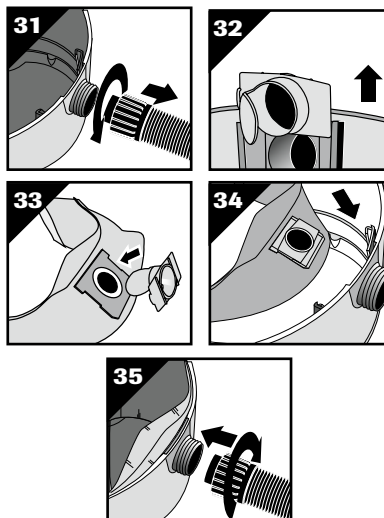
NOTE: When using the vacuum to pick up very fine dust such as sawdust or dry wall dust, it will be necessary to empty the tank and clean the filter at more frequent intervals to maintain maximum pick up power or upgrade to collection filter bags.



INSTALLING COLLECTION FILTER BAG

(Not standard on all models)

1. Use for dry pick up only. Use in conjunction with cartridge filter for picking up soot, cement, plaster or drywall dust.
2. With cord disconnected from receptacle, pull latches in an outward motion and remove tank cover.
3. Unscrew hose locking-nut and remove hose from inlet (**Figure 31**).
4. Remove inlet deflector from deflector guide (**Figure 32**). **NOTE:** Hose must be removed before inlet deflector can be taken out.
5. With the opening of the inlet deflector facing the left or right side of the filter bag, slide filter bag collar over deflector matching notches of bag collar to tabs on inlet deflector, bag will only fit properly one way (**Figure 33**).
6. Slide deflector with collection bag attached into deflector guide (**Figure 34**).
7. Reinsert hose into inlet and tighten locking-nut (**Figure 35**).
8. When secured in place, expand bag and position around the inside of the tank.



NOTE: When removing filter bag from tank, remove inlet deflector from filter bag collar and reinstall into deflector guide. Inlet deflector should

always be in place for any type of cleaning.

AUTOMATIC SUCTION SHUT-OFF

This vacuum is equipped with an automatic suction shut-off that operates when picking up liquids. As the level of the liquid rises in the tank, an internal float rises until it seats itself against a seal at the intake of the motor, shutting off suction. When this happens, the motor will develop a higher than normal pitch noise and the suction is drastically reduced. If this occurs, turn the unit off immediately. Failure to turn unit off after float rises and shuts off suction will result in extensive damage to the motor. To continue use, empty the liquid waste from the tank as outlined in the paragraph below. (**Emptying Tank**).

NOTE: If accidentally tipped over, the vacuum could lose suction. If this occurs, turn unit off and place vac in upright position. This will allow the float to return to its normal position, and you will be able to continue operation.

CAUTION

Emptying Tank

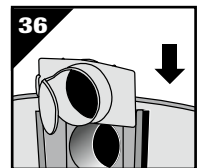
Use special care when emptying heavily loaded tanks. Your Wet/Dry Vacuum may be emptied of liquid waste by removing the tank cover. To empty, switch off the vac and remove the plug from the wall receptacle. Remove the tank cover and empty the tank.

NOTE: Model 2RPD8 has an adapter between lid assembly and tank. This can be removed for ease of use during caster dolly assembly and to empty tank. Replace to return to normal operation.

NOTE: For those models with a tank drain, tank can be emptied by removing drain cap and drain.

WET PICK UP OPERATION

Remove all dry filters plus all dirt and debris found in the tank assembly. For best results for wet pick up we recommend removing the cartridge filter and utilizing the foam sleeve (already in place over lid cage). Make sure inlet deflector is fully inserted into deflector guide on inside of tank. If it is not, install inlet deflector by sliding it downward into slot on deflector guide (**Figure 36**). **NOTE:** Hose must be removed before inlet deflector can be inserted into or removed from deflector guide. Opening on inlet deflector should always be in place for any type of cleaning. Misting in exhaust air may occur if the foam sleeve becomes saturated during wet pick up. If misting occurs, remove and dry the saturated foam sleeve or replace with another dry foam sleeve to eliminate the misting and possible dripping of liquid around the lid. Turn the unit off



Dayton® Wet/Dry Vacuums

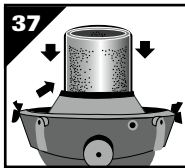
Operation (continued)

immediately upon completing a wet pick up job or when tank is full and ready to be emptied, raise the hose to drain any excess liquid into the tank. The interior of the tank should be periodically cleaned. The foam sleeve should be cleaned periodically as described in the following steps:

1. Always disconnect the plug from the wall receptacle before removing the tank cover. Remove foam sleeve by sliding it up and off the lid cage.
2. Shake excess dust off sleeve with rapid up and down movement.
3. Hold sleeve under running water rinsing from the inside. A water wash is not always required, depending on the condition of the sleeve.
4. Gently wring out excess water, blot sleeve with a clean towel and allow foam sleeve to dry. The foam sleeve is now ready to be re-installed on the lid cage.

NOTE: Bottom of sleeve should be TUCKED in groove between lid cage and tank lid (Figure 37).

NOTE: Wet pick up accessories should be washed periodically with soap and water, especially after picking up wet, sticky liquids. Picking up detergent or cleaners that create foam or suds can defeat the vacuums filtration. This could cause foreign material to pass into the motor impeller area and shorten motor life. This is not normal use and is not covered by product warranty.



WET PICK UP AND

PUMP ASSEMBLY OPERATION (For model 4TB87A only)

WARNING

TO REDUCE THE RISK OF ELECTRICAL SHOCK, DO NOT DIRECT DISCHARGE STREAM AT UNIT!

1. Always disconnect the plug from the wall receptacle before removing the tank cover.
2. Remove tank cover and cartridge filter. Tank should also be cleaned of any dirt or debris.
3. Ensure that the foam sleeve is in place for wet pick up. (See Wet Pick Up Operation)
4. Make sure inlet deflector is fully inserted into deflector guide on inside of tank.
5. Insert tube provided into pick up cage pushing until tube comes to a stop (Figure 38).
6. Take pick up assembly and insert tube into hole in bottom of lid cage pushing until assembly comes to a stop (Figure 39).

NOTE: Do not attempt to pump without pick

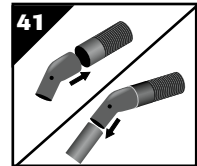
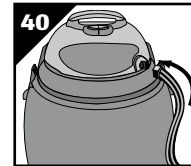
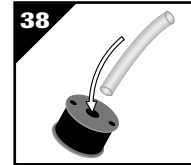
up cage in place or screen on pick up cage. Failure to do this could result in damage to pump.

7. Replace tank cover and secure lid latches.
8. To prevent unwanted discharge of water leave cap in place or attach garden hose to unit until you are ready to empty tank.
9. Once you are ready to begin pumping, remove outlet fitting cover and connect a standard garden hose (not supplied) to outlet fitting (Figure 40).
10. Attach the 2½" hose to tank inlet.
11. Your vacuum is supplied with a wet pick up elbow. Place the elbow on the hose end and attach desired accessory to elbow (Figure 41). Elbow MUST be in place during wet pick up to prevent overfilling of unit. Do not attempt wet pick up without elbow in place. Do not cover bleed hole in elbow. Failure to follow these precautions will result in overfilling of unit and misting through exhaust port.

WARNING

THE CARTRIDGE FILTER IS NOT COMPATIBLE WHEN UTILIZING THE PUMP PICK UP ASSEMBLY.

12. Plug vacuum in and push the ON switch.
13. Start wet pick up. In order to prime the pump feature, you will need at least 4" of water in the bottom of the tank. At this time the unit will automatically begin pumping. The unit will automatically shut off when full.
14. To empty a full tank by pumping, first remove the vacuum hose from the liquid. Do not empty liquid from hose back into tank. This will cause the unit to overflow and misting will occur through the exhaust port.
15. The ON switch must be manually held in the ON position for approximately 10-15 seconds to allow the water level to be reduced sufficiently, and then pumping will continue automatically. The unit will continue to discharge liquid until there is about 4" left in the tank.
- NOTE:** Wet pick up volume is greater than the discharge volume and step 15 may need to be repeated if the unit should shut off.
16. After wet pick up and pumping has been completed, the remaining liquid should be emptied from the tank and the pump pick up assembly should be removed and cleaned.
17. To utilize your vacuum as non-pump, refer to dry pick up operation for proper installation of filters.



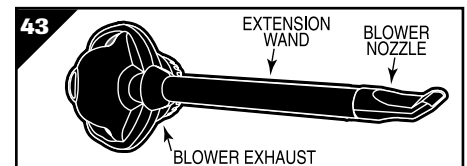
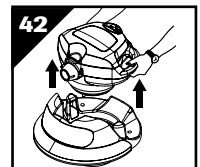
Portable Blower Operation (For model 3VE22 only)

BLOWER SAFETY

1. Never operate the portable blower in wet or damp conditions. Do not use in rain.
2. Keep area of operation clear of all persons, particularly small children and pets.
3. Dress properly. Do not wear loose clothing or jewelry. Always wear substantial footwear and long pants. Secure loose hair with a hat or hair net to avoid hair being caught in moving parts.
4. Never blow debris in direction of bystanders.
5. Do not overreach or use blower from unstable surface such as ladders, trees, steep slopes, roof tops, etc. Always be sure of your footing.
6. Inspect the area before using the blower. Remove all debris and hard objects such as rocks, glass, wire, etc. that can be blown or cause damage during operation.
7. Always wear a respirator or face mask when working in dusty environments.
8. Keep vents clean and clear of dirt and debris.

BLOWER ASSEMBLY INSTRUCTIONS

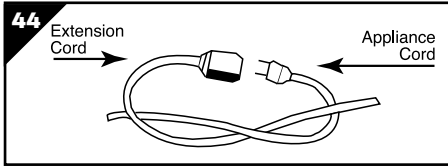
1. To remove portable blower from tank cover, grasp both blower handles and pull in an upward motion (Figure 42).
2. Insert 2½" extension wand into the blower exhaust. Push firmly into place by twisting wand slightly.
3. Attach desired accessory (Figure 43).



4. Plug the cord into an electrical outlet. Your portable blower is ready for use. **NOTE:** If an

Models 3VE22, 4TB87A, 1UG91C and 2RPD8

Operation (continued)

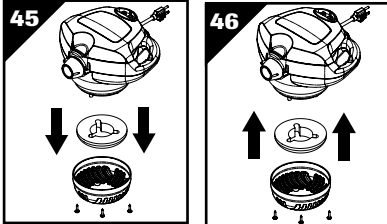


extension cord is used, use only an approved outdoor extension cord. To prevent extension cord from pulling away from appliance cord, tie cords as shown (Figure 44).

- To clean inlet shield and foam pad, disconnect cord from receptacle and remove screws on bottom side of power unit (Figure 45)
- Once removed, run foam pad under running water and blot with a clean towel to dry.
- After cleaning, replace inlet shield and foam pad and secure with screws (Figure 46).
NOTE: Inlet shield will only fit properly one way.

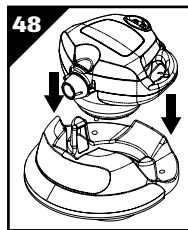
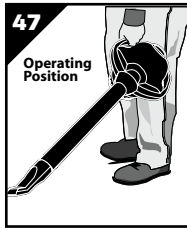
CAUTION

DO NOT OPERATE BLOWER WITHOUT INLET SHIELD AND FOAM PAD IN PLACE.



BLOWER OPERATION

- The correct operating position is to hold the portable blower in either hand, at arms length at your side. Your portable blower has been designed with the necessary angle to direct the air blast toward the ground in front of you (Figure 47).
- Always work going away from solid objects such as walls, large stones, automobiles and fences.
- Clean spaces with corners by starting in corners and moving outward to open areas to prevent an accumulation of debris which could fly into your face.
- Be careful when working near valuable plants. The force of the air could damage tender plants.
- Use both handles when working above the waist or when two-handed grip is desired.
- Reattach portable blower for wet/dry operation by placing power unit back into tank cover pushing in a downward motion until portable blower snaps into place (Figure 48).



WARNING

ALWAYS WEAR EYE PROTECTION TO PREVENT ROCKS OR DEBRIS FROM BEING BLOWN OR RICOCHETING INTO THE EYES OR FACE WHICH CAN RESULT IN SERIOUS INJURY.

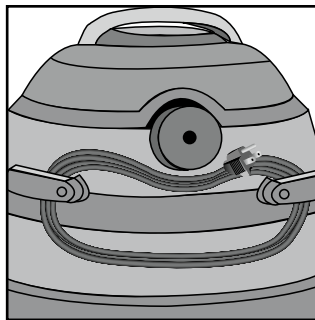
WARNING

BE SURE TO DISCONNECT POWER SUPPLY BEFORE ATTEMPTING TO SERVICE OR REMOVE ANY COMPONENTS.

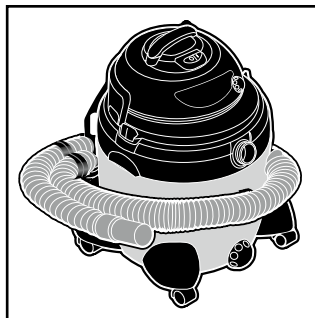
STORAGE

Before storing the vacuum cleaner, always empty and clean the tank. Never allow liquids to sit in the tank for any extended period of time.

Always store the vacuum cleaner indoors.



Cord Wrap

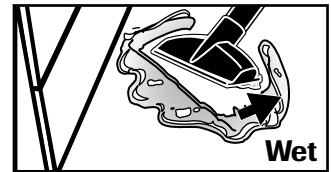


Hose Holder

(Not standard with all models)



Dry



Wet

14" Wet/Dry Floor Nozzle

LUBRICATION

No lubrication is necessary as the motor is equipped with lifetime lubricated bearings.

SERVICE

Do not attempt to service your Dayton wet/dry vacuum cleaner beyond that described in this manual. Refer all other servicing to a qualified service center.

WARNING



IF ANY OF THE MOTOR HOUSING PARTS SHOULD BECOME DETACHED OR BROKEN, EXPOSING THE MOTOR OR ANY OTHER ELECTRICAL COMPONENTS,

OPERATION SHOULD BE DISCONTINUED IMMEDIATELY TO AVOID PERSONAL INJURY OR FURTHER DAMAGE TO THE VACUUM. REPAIRS SHOULD BE MADE BEFORE REUSING THE VACUUM.

ENGLISH

Dayton® Wet/Dry Vacuums

Troubleshooting Chart

SYMPTOM	POSSIBLE CAUSE(S)	CORRECTIVE ACTION
Parts/accessories missing	Packed in tank	Check in tank
Vacuum cleaner will not start	1. Defective switch 2. Defective motor	1. Replace 2. Replace
Dust discharging from exhaust	1. Filter not installed/not installed properly 2. Filter damaged 3. Filter clogged or dust is too fine 4. Filter not functional	1. Properly install filter 2. Replace filter 3. Use more efficient filter 4. Clean or replace filter
Loss of suction	1. Loose hose connection 2. Filter clogged 3. Full tank 4. Hole in hose	1. Tighten hose connection 2. Clean or replace filter 3. Empty tank 4. Replace hose

LIMITED WARRANTY

DAYTON ONE-YEAR LIMITED WARRANTY. DAYTON® MODELS COVERED IN THIS MANUAL ARE WARRANTED BY DAYTON ELECTRIC MFG. CO. (DAYTON) TO THE ORIGINAL USER AGAINST DEFECTS IN WORKMANSHIP OR MATERIALS UNDER NORMAL USE FOR ONE YEAR AFTER DATE OF PURCHASE. ANY PART WHICH IS DETERMINED TO BE DEFECTIVE IN MATERIAL OR WORKMANSHIP AND RETURNED TO AN AUTHORIZED SERVICE LOCATION, AS DAYTON DESIGNATES, SHIPPING COSTS PREPAID, WILL BE, AS THE EXCLUSIVE REMEDY, REPAIRED OR REPLACED AT DAYTON'S OPTION. FOR LIMITED WARRANTY CLAIM PROCEDURES, SEE "PROMPT DISPOSITION" BELOW. THIS LIMITED WARRANTY GIVES PURCHASERS SPECIFIC LEGAL RIGHTS WHICH VARY FROM JURISDICTION TO JURISDICTION.

LIMITATION OF LIABILITY. TO THE EXTENT ALLOWABLE UNDER APPLICABLE LAW, DAYTON'S LIABILITY FOR CONSEQUENTIAL AND INCIDENTAL DAMAGES IS EXPRESSLY DISCLAIMED. DAYTON'S LIABILITY IN ALL EVENTS IS LIMITED TO AND SHALL NOT EXCEED THE PURCHASE PRICE PAID.

WARRANTY DISCLAIMER. A DILIGENT EFFORT HAS BEEN MADE TO PROVIDE PRODUCT INFORMATION AND ILLUSTRATE THE PRODUCTS IN THIS LITERATURE ACCURATELY; HOWEVER, SUCH INFORMATION AND ILLUSTRATIONS ARE FOR THE SOLE PURPOSE OF IDENTIFICATION, AND DO NOT EXPRESS OR IMPLY A WARRANTY THAT THE PRODUCTS ARE MERCHANTABLE, OR FIT FOR A PARTICULAR PURPOSE, OR THAT THE PRODUCTS WILL NECESSARILY CONFORM TO THE ILLUSTRATIONS OR DESCRIPTIONS. EXCEPT AS PROVIDED BELOW, NO WARRANTY OR AFFIRMATION OF FACT, EXPRESSED OR IMPLIED, OTHER THAN AS STATED IN THE "LIMITED WARRANTY" ABOVE IS MADE OR AUTHORIZED BY DAYTON.

Technical Advice and Recommendations, Disclaimer. Notwithstanding any past practice or dealings or trade custom, sales shall not include the furnishing of technical advice or assistance or system design. Dayton assumes no obligations or liability on account of any unauthorized recommendations, opinions or advice as to the choice, installation or use of products.

Product Suitability. Many jurisdictions have codes and regulations governing sales, construction, installation, and/or use of products for certain purposes, which may vary from those in neighboring areas. While attempts are made to assure that Dayton products comply with such codes, Dayton cannot guarantee compliance, and cannot be responsible for how the product is installed or used. Before purchase and use of a product, review the product applications, and all applicable national and local codes and regulations, and be sure that the product, installation, and use will comply with them.

Certain aspects of disclaimers are not applicable to consumer products; e.g., (a) some jurisdictions do not allow the exclusion or limitation of incidental or consequential damages, so the above limitation or exclusion may not apply to you; (b) also, some jurisdictions do not allow a limitation on how long an implied warranty lasts, consequently the above limitation may not apply to you; and (c) by law, during the period of this Limited Warranty, any implied warranties of implied merchantability or fitness for a particular purpose applicable to consumer products purchased by consumers, may not be excluded or otherwise disclaimed.

Prompt Disposition. A good faith effort will be made for prompt correction or other adjustment with respect to any product which proves to be defective within limited warranty. For any product believed to be defective within limited warranty, first write or call dealer from whom the product was purchased. Dealer will give additional directions. If unable to resolve satisfactorily, write to Dayton at address below, giving dealer's name, address, date, and number of dealer's invoice, and describing the nature of the defect. Title and risk of loss pass to buyer on delivery to common carrier. If product was damaged in transit to you, file claim with carrier.

Manufactured for Dayton Electric Mfg. Co., 100 Grainger Parkway, Lake Forest, Illinois 60045-5201 U.S.A.

For Repair Parts, call 1-800-323-0620

24 hours a day – 365 days a year

Please provide following information:

-Model number

-Serial number

-Part description and number as shown in parts list

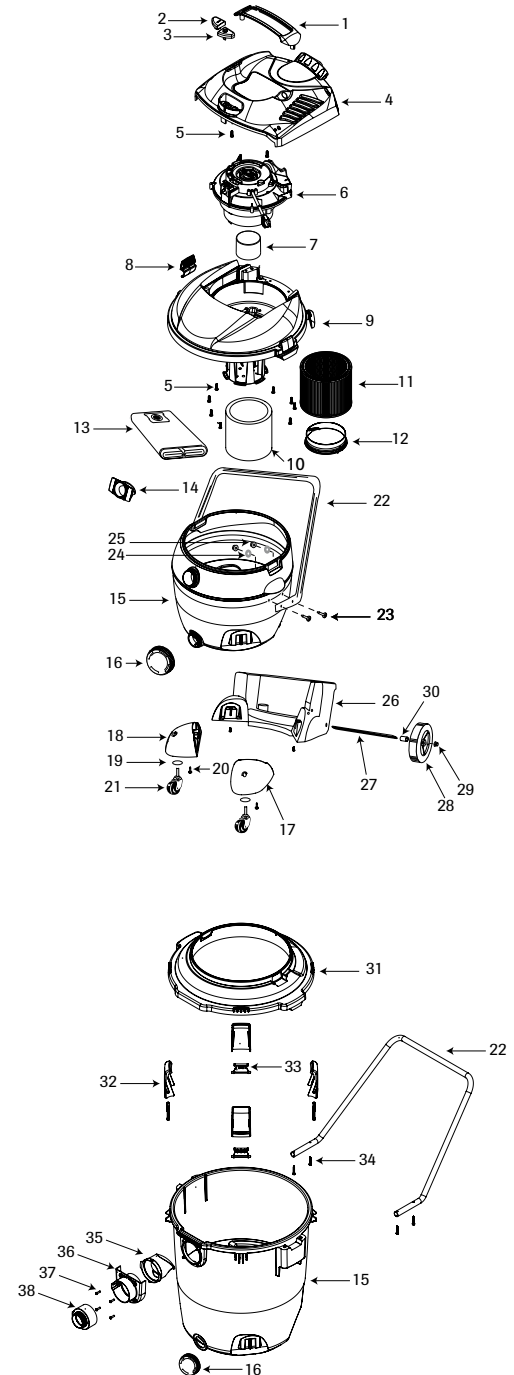
Repair Parts List

Ref. #	Description	Part No.	Qty
1	Handle	3751001	1
2	Switch Button - I	7414200	1
3	Switch Button - O	7414210	1
4	Motor Cover Assembly (incl. 1,2,3)	3743043	1
5	Screw 10 x 3/4 Trilobe Twin Lead	1517699	12
6	= Power Unit Assembly (1UG91C) (2RPD8)	1UND3	1
		8135597	1
7	Float	3545000	1
8	Lid Latch	7444500	2
9	Lid Cage and Latch Assembly (1UG91C) (2RPD8)	1945065	1
		1945067	1
10	Foam Sleeve	5X879A	1
11	Cartridge Filter	2W435	1
12	Filter Retainer	3008000	1
13	Collection Filter Bag (1UG91C)	1UG85	1
14	Inlet Deflector	7413120	1
15	Tank Assembly (1UG91C) (2RPD8)	7365697	1
		1099897	1
16	Drain Cover	7446800	1
17	Front Caster Foot A	7431320	1
18	Front Caster Foot B	7431370	1
19	Flatwasher (1UG91C)	0704399	2
20	Screw 10 x 3/4 SL Hex Head	1503999	4
21	Caster (1UG91C) (2RPD8)	6773900	2
		6775200	2
22	Carriage Handle (1UG91C) (2RPD8)	2088000	1
		8833800	1
23	Screw 1/4" - 20 x 3/4" Slotted Thread (1UG91C)	0810899	4
24	Sealing Washer (1UG91C)	0701299	4
25	1/4" - 20 Locknut - Heavy Hex HD (1UG91C)	1304599	4
26	Rear Dolly/Basket	7417350	1
27	Axle (1UG91C) (2RPD8)	2442100	1
		2442700	1
28	Rear Wheel, 8" (20.32cm) (1UG91C) 10" (25.4cm) (2RPD8)	2425010	2
		2421000	2
29	Cap Nut	4300299	2
30	Spacer (2RPD8)	1101999	2
31	Adapter 22"-16" (55.3cm x 40.6cm) (2RPD8)	8831600	1
32	Handle, tank latch (2RPD8)	8832300	4
33	Hinge, tank latch (2RPD8)	8832200	4
34	Screw Lg slot washer Hd (2RPD8)	1512199	4
35	Deflector (2RPD8)	8832000	1
36	Tank inlet 3.5" (8.9cm) (2RPD8)	8832100	1
37	Screw #10 Trilobe (2RPD8)	1517799	4
38	Inlet reducer 3.5"-2.5" (8.9cm-6.4cm) (2RPD8)	8831900	1
Δ	8 ft. x 2 1/2" Hose (2.4m x 6.35cm)	22212B	1
Δ	2 1/2" (6.35cm) dia. Extension Wands	0150400	2
Δ	14" (35.5cm) Wet/Dry Floor Nozzle	0213696	1
Δ	8" (20.32cm) Utility Nozzle	5281500	1
Δ	Crevice Tool	0160400	1
Δ	Concentrator Nozzle	0890401	1
Δ	Elbow Grip	0223000	1
Δ	Hose Holder	3132630	1

(=) Replacement parts not available for power unit.

Δ Not Shown

Do not attempt to service your Dayton vacuum beyond that described in the Operating Instructions and Parts Manual. These models have no user serviceable parts.



2RPD8

Dayton®

For Repair Parts, call 1-800-323-0620

24 hours a day – 365 days a year

Please provide following information:

- Model number
- Serial number
- Part description and number as shown in parts list

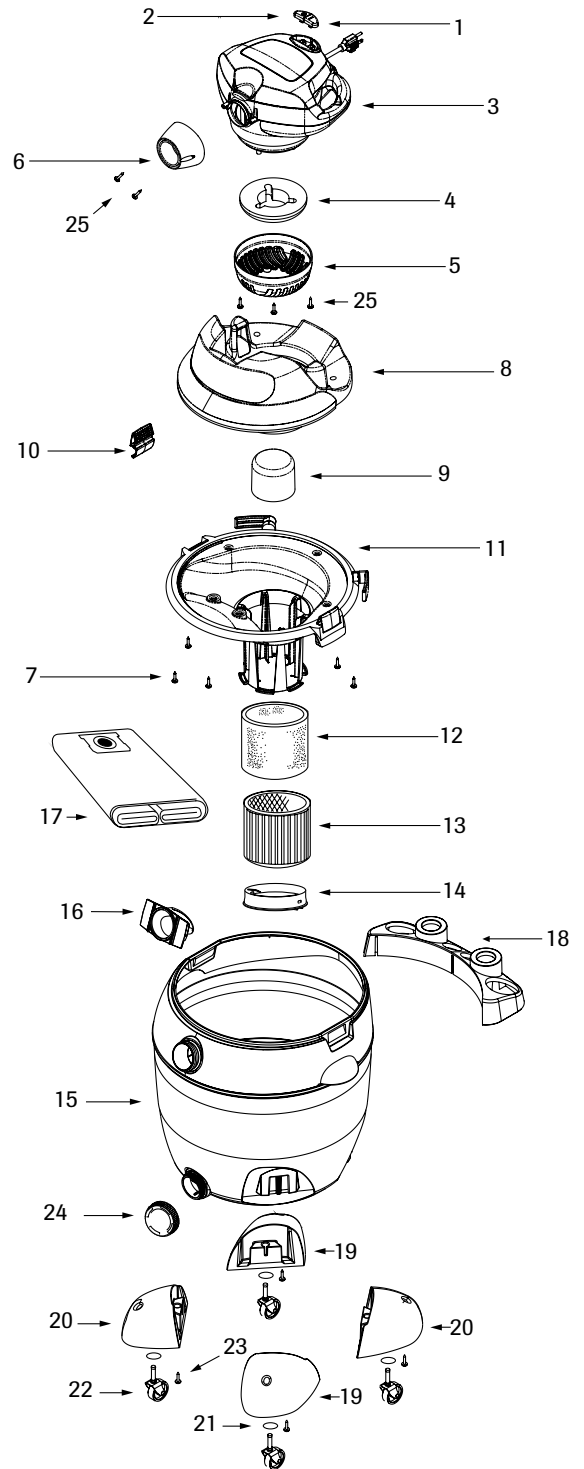
Repair Parts List

Ref. #	Description	Part No.	Qty
1	Switch Button - I	7414200	1
2	Switch Button - O	7414210	1
3	= Power Unit (includes items 1-6+25)	1UNE1	1
4	Intake Screen	8541205	1
5	Inlet Shield	7442301	1
6	Ferrule	7350400	1
7	Screw 10 x 3/4 Trilobe Twin Lead	1517699	5
8	Tank Cover	1944160	1
9	Float	7411200	1
10	Lid Latch	7444500	2
11	Lid Cage & Latch Assembly	7350630	1
12	Foam Sleeve	5X879A	1
13	Cartridge Filter	2W435	1
14	Filter Retainer	3008000	1
15	Tank Assembly	7363497	1
16	Inlet Deflector	7413120	1
17	Collection Filter Bag	1UG85	1
18	Tool Holder	8411300	1
19	Casterfoot A	7431320	2
20	Casterfoot B	7431370	2
21	Flatwasher	0704399	4
22	Caster	6773900	4
23	Screw 10 x 3/4 SL Hex Head	1503999	4
24	Drain Cover	7446800	1
25	Screw #10 Trilobe THD Roll 48	1517799	5
Δ	8 ft. x 2½" Hose (2.4m x 6.35cm)	2Z212B	1
Δ	2½" (6.35cm) dia. Extension Wands	0150400	2
Δ	14" (35.5cm) Wet/Dry Floor Nozzle	0213696	1
Δ	8" (20.32cm) Utility Nozzle	5281500	1
Δ	Crevice Tool	0160400	1
Δ	Concentrator Nozzle	0890401	1
Δ	Elbow Grip	0223000	1
Δ	Hose Holder	3132630	1

(=) Replacement parts not available for power unit.

Δ Not Shown

Do not attempt to service your Dayton vacuum beyond that described in the Operating Instructions and Parts Manual. These models have no user serviceable parts.



ENGLISH

For Repair Parts, call 1-800-323-0620

24 hours a day – 365 days a year

Please provide following information:

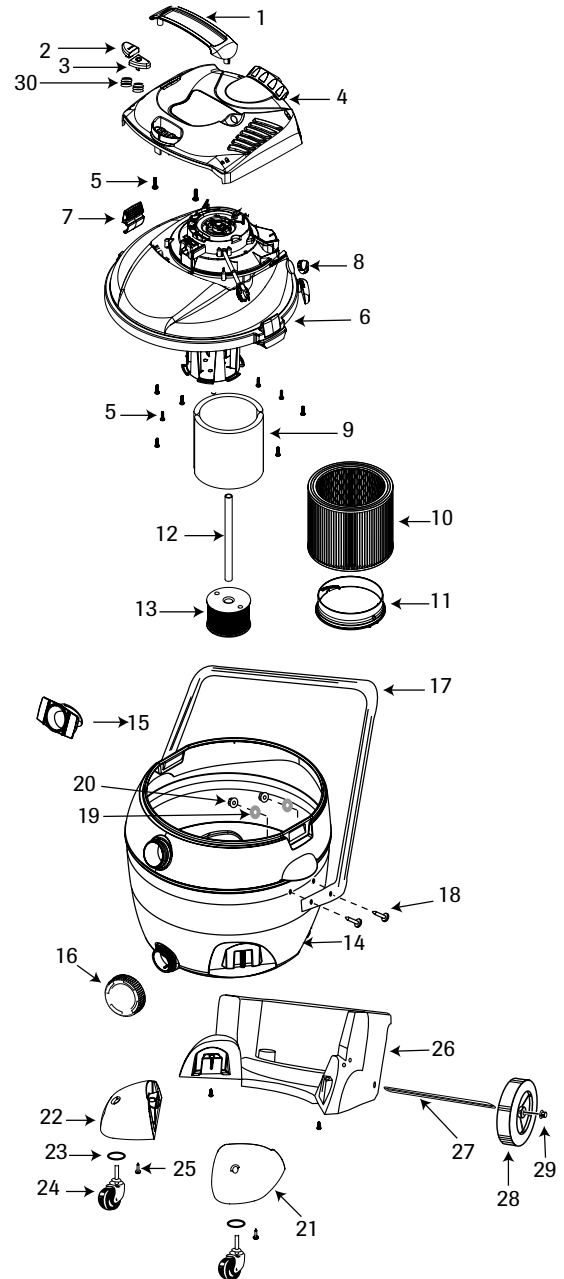
- Model number
- Serial number
- Part description and number as shown in parts list

Repair Parts List

Ref. #	Description	Part No.	Qty
1	Handle	3751001	1
2	Switch Button - I	7414200	1
3	Switch Button - O	7414210	1
4	Motor Cover (Incls 1)	3743046	1
5	Screw 10 x 3/4 Trilobe Twin Lead	1517699	10
6	=Power Unit Assembly	1944261	1
7	Lid Latch	7444500	2
8	Outlet Fitting Cap	1945023	1
9	Foam Sleeve	5X879A	1
10	Cartridge Filter	2W435	1
11	Filter Retainer	3008000	1
12	Pickup Tube	2723107	1
13	Pickup Cage Assembly	7412250	1
14	Tank Assembly	7367297	1
15	Inlet Deflector	7413120	1
16	Drain Cover	7446800	1
17	Carriage Handle	2088000	1
18	Screw 1/4" - 20 x 3/4" Slotted Thread	0810899	4
19	Sealing Washer	0701299	4
20	1/4" - 20 Locknut-Heavy Hex Hd	1304599	4
21	Casterfoot A	7431320	1
22	Casterfoot B	7431370	1
23	Flatwasher	0704399	2
24	Caster	6773900	2
25	Screw 10 x 3/4" Hex Head	1503999	4
26	Rear Dolly Basket	7417350	1
27	Axle	2442100	1
28	Rear Wheel, 8" (20.32cm)	2425010	2
29	Cap Nut	4300299	2
30	Spring	2802899	2
Δ	8' x 2 1/2" Hose (2.4m x 6.35cm)	2Z212B	1
Δ	2 1/2" (6.35cm) dia. Extension Wands	0150400	2
Δ	14" (35.5cm) Wet/Dry Floor Nozzle	0213696	1
Δ	8" (20.32cm) Utility Nozzle	5281500	1
Δ	Crevice Tool	0160400	1
Δ	Concentrator Nozzle	0890401	1
Δ	Elbow Grip	0223004	1
Δ	Hose Holder	3132630	1
‡	Collection Filter Bag	1UG85	1
‡	Ultra Duty Cartridge Filter	4TB94	1
‡	HEPA Cartridge Filter	4TB93	1

- (‡) Optional.
- (=) Replacement parts not available for power unit.
- (Δ) Not shown.

Do not attempt to service your Dayton vacuum beyond that described in the Operating Instructions and Parts Manual. These models have no user serviceable parts.



ENGLISH

