

Please read and save these instructions. Read carefully before attempting to assemble, install, operate or maintain the product described. Protect yourself and others by observing all safety information. Failure to comply with instructions could result in personal injury and/or property damage! Retain instructions for future reference.

Dayton® Manual Material Lifts

Description

Dayton Manual Material Lift is used to lift material to and from shelves, move office equipment and install ceiling and wall appliances on level surfaces, including workshops, warehouses, stockrooms, receiving departments. Perfect when aisles and congested areas prevent the use of larger equipment. Rolls through standard doorways in the upright position without having to tilt back the truck. Constructed of durable steel and lightweight aluminum frame. Forks can be inverted to provide two different lift heights. Operated by a hand-crank winch. Lightweight and portable, as upper handle rollers allow the truck to be loaded onto its back for easy



Standard Base Model
11N196A, 11N197A



Straddle Base Model
11N198A, 11N199A, 11N201A



Counterbalanced Model
11N202A, 11N203A, 11N204A

Each hand winch lift truck conforms to the generalized specifications disclosed in this manual and fulfills our demanding standards for quality, safety and durability. This manual adopts relevant provisions of ANSI/ITSDF standard B56.10-2006, "Safety Standard for Manually Propelled High Lift Industrial Trucks".

Important

Employees and any other persons, who might foreseeable use, install, or perform maintenance on the Manual Material Lift, must read and understand every instruction before using it.

Dayton[®] Manual Material Lifts

E
N
G
L
I
S
H

Specification

Model	Load Cap. (Lbs)	Lifting Height(In.)		Overall Dim.(In.)			Load Center (in)
		Forks Up(in)	Forks Down(in)	L(in)	W(in)	H(in)	
11N196A	400	120	98	34-1/2	24	67	10
11N197A	500	70	47	34-1/2	24	67	10
11N198A	350	142	120	43	29	79-3/4	10
11N199A	400	120	98	43	29	67	10
11N201A	500	70	47	43	29	67	10
11N202A	500	70	47	46	29	67	10
11N203A	400	120	98	46	29	67	10
11N204A	350	142	120	46	29	79-3/4	10

Unpacking

After unpacking unit, inspect carefully for any damage that may have occurred during transit. Check for loose, missing, or damaged parts. Shipping damage claim must be filed with carrier.

General Safety Information

Each person who might participate in the assembly, use, inspection or maintenance of the product must read the entire manual and fully understand the directions BEFORE assembling, using, inspecting or maintaining the Manual Material Lift.

▲ CAUTION Use caution and be aware of pinch and crush points. Never place hands, feet, or objects under forks or platform

▲ CAUTION Do not use on inclines or uneven surfaces.

▲ CAUTION Never leave the load unattended in a raised position.

▲ CAUTION Transporting or lifting persons is not permitted.

▲ CAUTION Carefully read all manuals included with this product before putting into service. Never exceed the maximum capacity of the lift. Load must be evenly distributed and load center limits must not be exceeded.

Warning

Failure to obey the instructions and safety rules in this manual may result in DEATH or SERIOUS INJURY. The manufacturer is not liable for any injury or property damage that occurs as a consequence of failing to apply the safe operation and maintenance procedures explained in this manual or that appear on labels affixed to the product.

Model 11N196A thru 11N204A

E
N
G
L
I
S
H

Safety Principles

Fall Hazards

Do not use as a personnel lifting platform or step.
Do not stand or sit on the forks, load platform or boom.
Do not climb on the machine



Tip-over Hazards

Do not exceed the rated load capacity. See Load Capacity Charts section.
Do not raise the load unless the leg lock pins have been properly inserted into the legs.
Do not raise the load unless the correct length legs are properly installed.
Do not raise the load unless the machine is on a firm, level surface.



Do not move the machine with a raised load, except for minor positioning.
Do not tilt the machine back with a

raised load.
Do not use blocks to level the machine.
Do not operate the machine in strong or gusty winds.
Increasing the load surface area will decrease machine stability in windy conditions.
Do not place ladders or scaffolding against any part of the machine.
Do not operate the machine unless the wheel/leg/caster configuration is properly installed.
Prior to use, check the work area for drop-offs, holes, bumps, debris, unstable or slippery surfaces or other possible hazardous conditions.

Avoid debris and uneven surfaces while rolling a machine with the legs not installed.
Do not replace machine parts critical to stability or structure with items of different weight or specification.
Do not cause a horizontal force or side load to the machine by raising or lowering a fixed or overhanging load.
Do not use the machine on a moving or mobile surface or vehicle.

Dayton[®] Manual Material Lifts

E
N
G
L
I
S
H

Collision Hazards

Do not raise if the load is not properly centered on the forks or load platform.
 Check the work area for overhead obstructions or other possible hazards.
 Do not stand under or allow personnel under the machine when the load is raised.
 Do not lower the load unless the area below is clear of personnel and obstructions.
 Use common sense and planning when transporting the machine on an incline, slope or stairs.



Electrocution Hazards

This machine is not electrically insulated and will not provide protection from contact with or proximity to electrical current. Maintain safe distances away from electrical power lines

and apparatus in accordance with applicable governmental regulations and the following chart. Allow for mast movement and electrical line sway or sag, and be aware of strong or

gusty winds. Keep away from the machine if it contacts energized power lines. Personnel must not touch or operate the machine until power lines are shut off. Do not use the machine as a ground for welding.

Voltage	Minimum Safe	
	Approach	Distance
Phase to Phase	Feet	Meters
0 to 300V	Avoid	Contact
300V to 50KV	10	3.1
50KV to 200KV	15	4.6
200KV to 350KV	20	6.1
350KV to 500KV	25	7.6
500KV to 750KV	35	10.7
750KV to 1000KV	45	13.7

Model 11N196A thru 11N204A

Bodily Injury Hazards

Do not grasp the cable. Keep hands and fingers away from the pulleys, carriage and other potential pinch points.

Improper Use Hazard

Never leave a machine unattended with a load. Unauthorized personnel may attempt to operate the machine without proper instruction, creating an unsafe condition.

Damaged Machine Hazards

Do not use a damaged or malfunctioning machine. Do not use a machine with a worn, frayed, kinked or damaged cable. Do not use a machine with less than 4 wraps of cable on the winch drum when the carriage is fully lowered. Conduct a thorough pre-operation inspection prior to each use. Be sure that all decals are legible and in place. Maintain proper lubrication on the winch. Do not allow oil or grease on braking surfaces.

Crushing Hazard

Maintain a firm grasp on the winch handle until the brake is locked. The brake is locked when the load will not cause the winch handle to turn.

Lifting Hazard

Use proper lifting techniques to load or tip the machine, or move the machine on stairs. Do not move the machine on stairs when the machine is equipped with the 4 point caster option.



Pre-operation Inspection

Do Not Operate Unless:

You learn and practice the principles of safe machine operation contained in this operator's manual.

1. Avoid hazardous situations.
2. Always perform a pre-operation inspection. Know and understand the pre-operation inspection before going on to the next section.
3. Always perform function tests prior to use
4. Inspect the workplace.
5. Only use the machine as it was intended

Dayton[®] Manual Material Lifts

Fundamentals

The Pre-operation Inspection is a visual inspection performed by the operator prior to each work shift.

This inspection is designed to discover if anything is apparently wrong with the lift before the operator performs a function test.

Inspect the machine for modifications, damage or loose or missing parts.

A damaged or modified machine must never be used. If damage or any variation from factory delivered condition is discovered, the machine must be tagged and removed from service.

Repairs to the machine may only be made by a qualified service technician, according to the manufacturer's specifications. After repairs are completed, the operator must perform a per-operation inspection again before testing the machine functions.

Be sure that the operator's

manual is complete, legible and available for reference. Be sure that all decals are legible and in place.

Check the following components or areas for damage, modifications and improperly installed or missing parts:

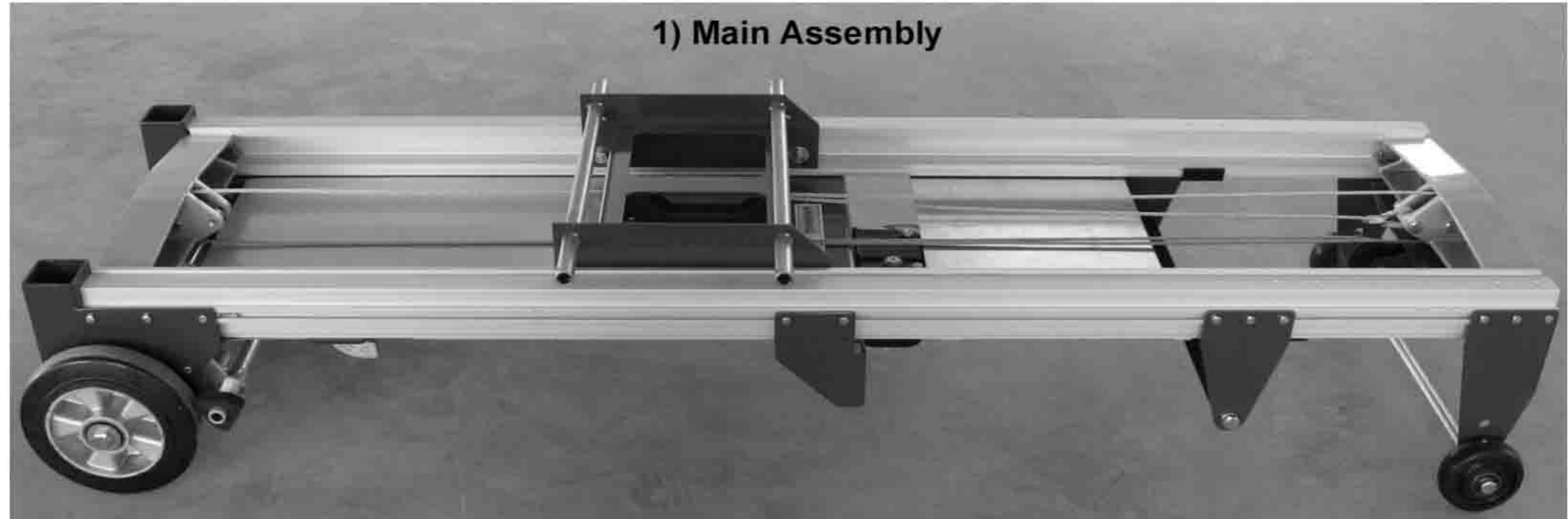
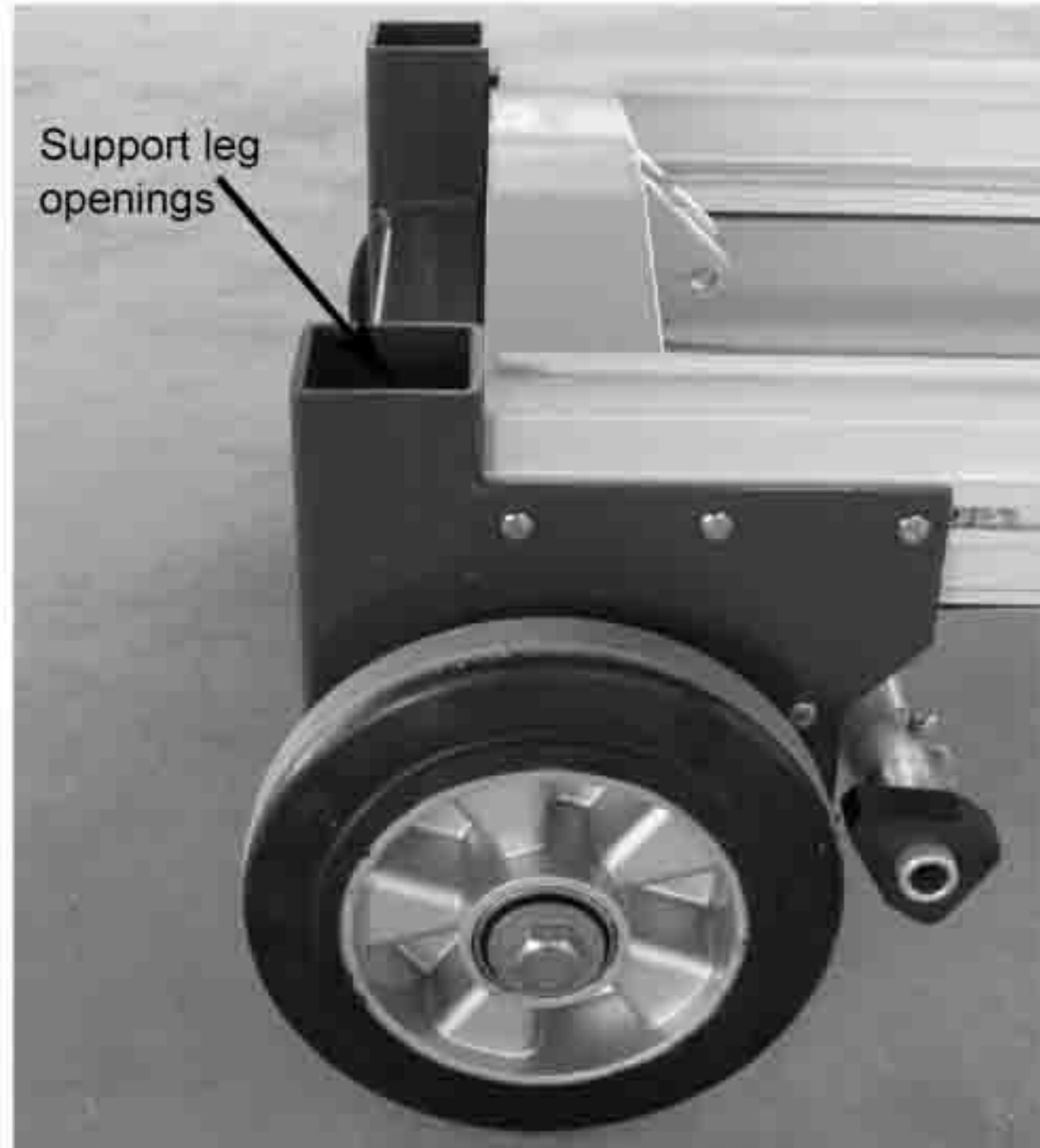
- Winch and related components
- Base components
- Legs
- Roller wheels
- Inner and outer frames
- Glide buttons
- Carriage hold-down assembly
- Cable anchor
- Cable and pulleys
- Wheels and casters
- Forks
- Load platform (if equipped)
- Nuts, bolts and other fasteners
- Cable (kinks, frays, abrasions)
- Brake system (if equipped)
- Check the entire machine for:
 - Dents or damage
 - Corrosion or oxidation
 - Cracks in welds or structural components

Be sure that all structural and other critical components are present and all associated fasteners and pins are in place and properly tightened. Be sure there is a minimum of 4 wraps of cable around the winch drum when the carriage is fully lowered.

Model 11N196A thru 11N204A

Assembly Instructions

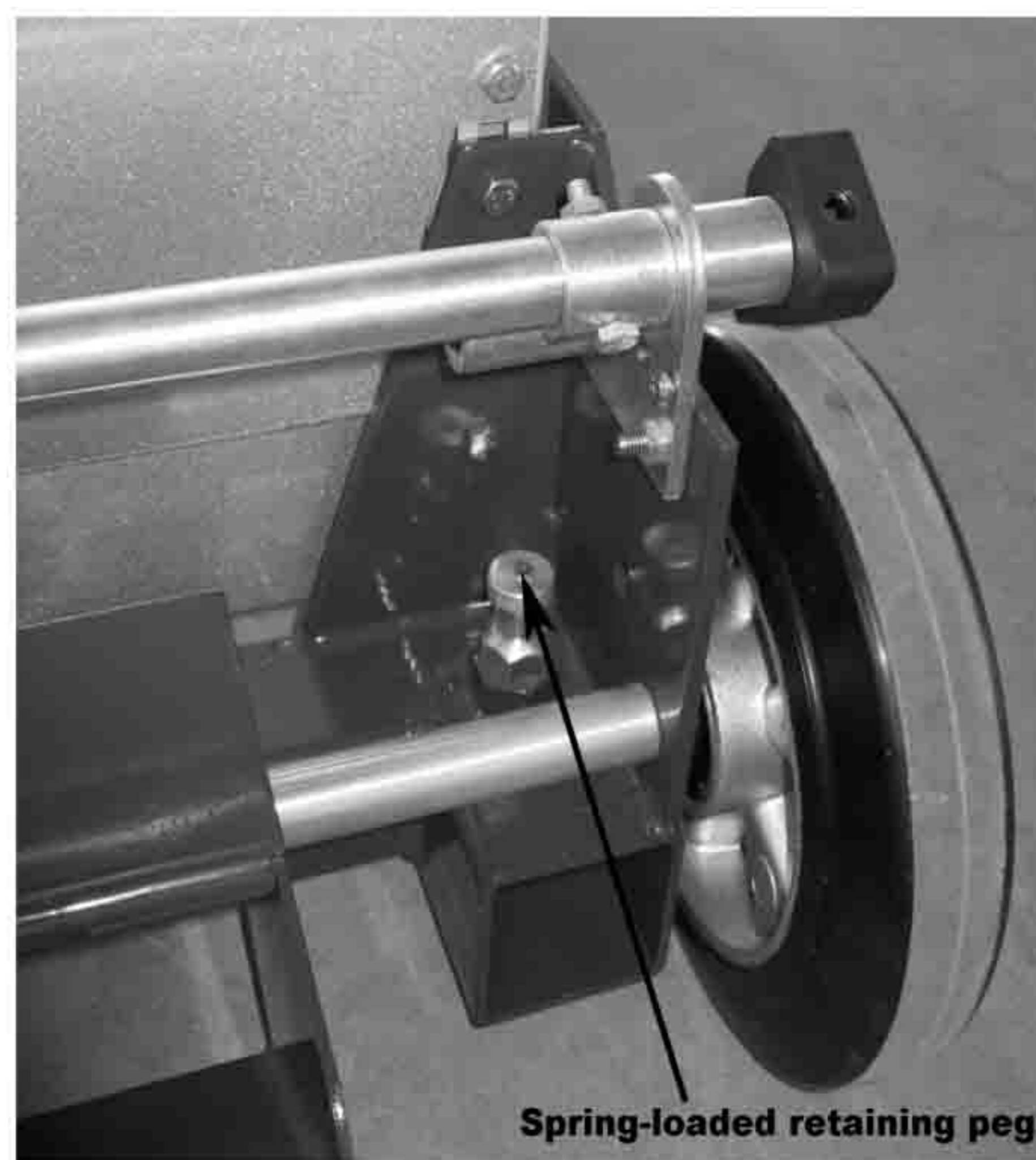
For 11N196A, 11N197A, 11N198A, 11N199A, 11N201A



E
N
G
L
I
S
H



Step 1: Connect the support legs to the main assembly by following below instructions



Dayton[®] Manual Material Lifts

E
N
G
L
I
S
H

- (1) Insert a support leg into each of the openings in the main assembly.
- (2) One at a time, pull the retaining pegs to allow the legs to slide further into the openings.
- (3) Slowly release the pegs. You may have to wiggle the leg to get the peg to drop.
- (4) Pull upwards on each of the support legs to verify that they are held in place by the pegs. The legs should not be able to slide out of the opening.
- (5) If a leg comes out of the opening, the corresponding peg did not engage properly.

Step 2:

- Lift the assembly to the upright position (Figure 1).
- Lock the wheel brakes (Figure 2).
- Install Winch handle (Figure 3).



Figure 1

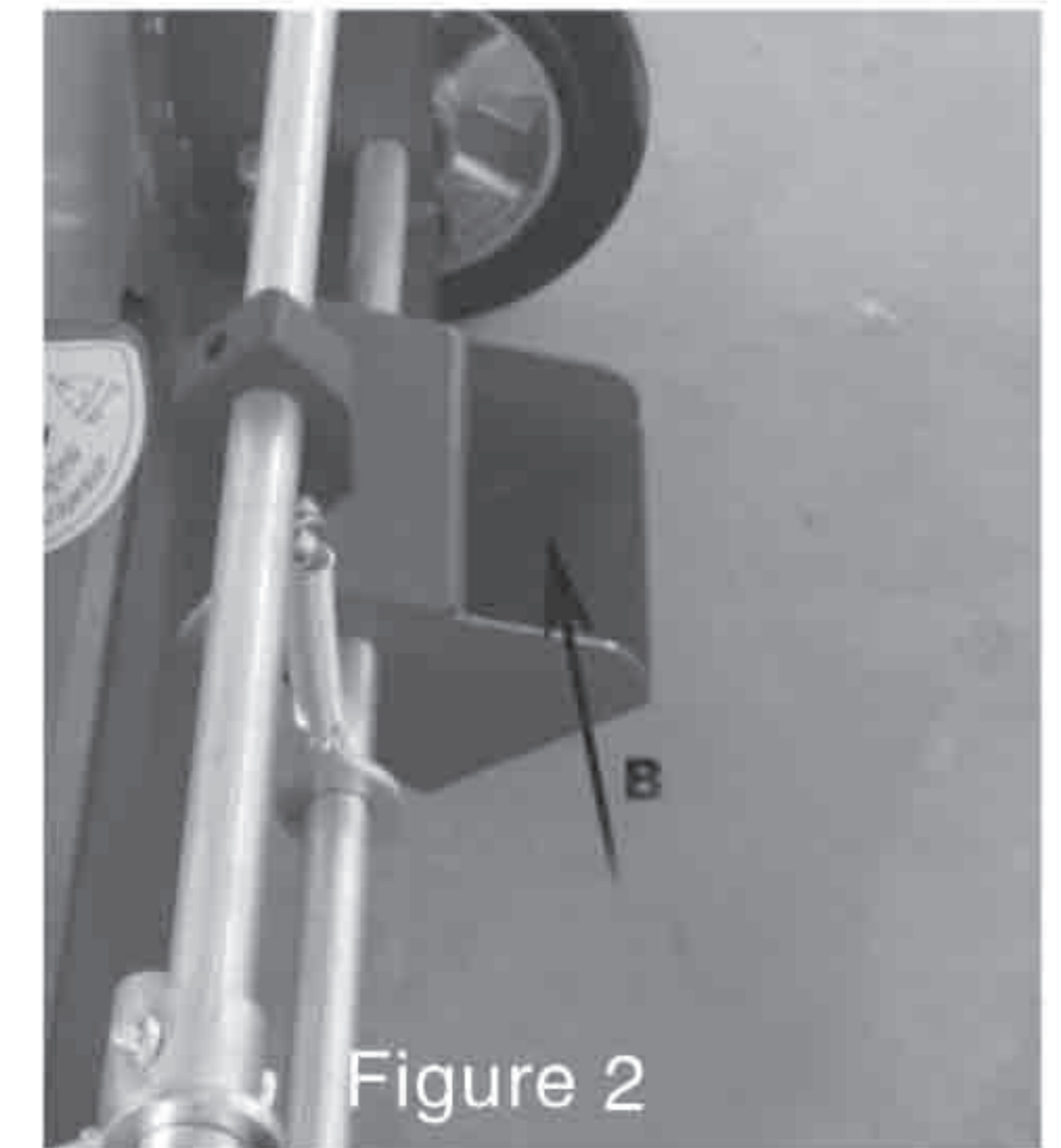


Figure 2

Engage the brakes by pressing down on the brake actuator



Figure 3

Model 11N196A thru 11N204A

E
N
G
L
I
S
H

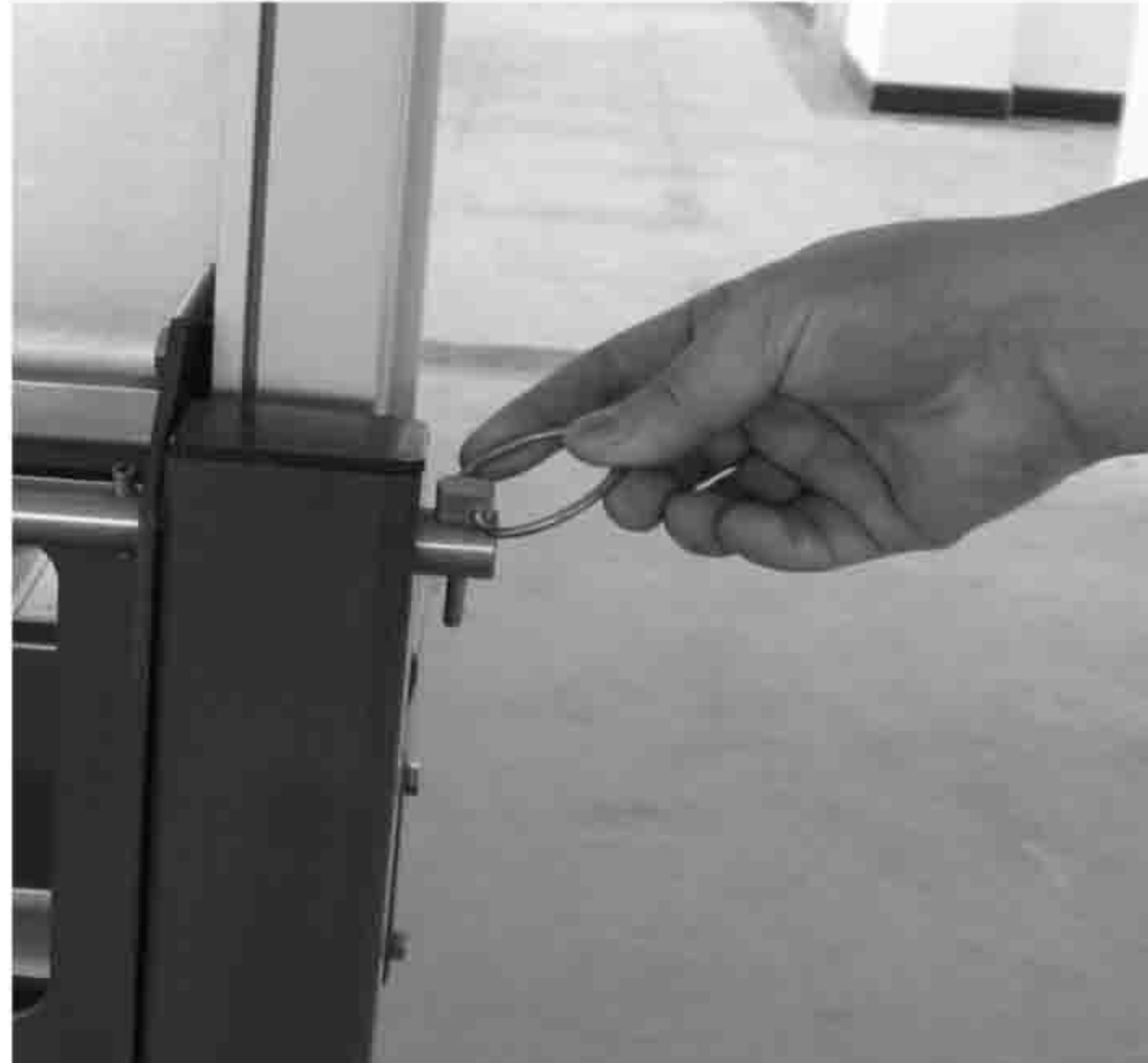
Step 3: Attach the forks to the carriage



Grasp the operator handle with one hand; turn the winch handle clockwise with the other hand. Raise the carriage to a comfortable work height.



Align the holes in the forks with the carriage crossbars; then push the forks until they contact the carriage. Note: It may be necessary to tap the forks into place with a rubber mallet.



Slide fork retaining pins through the holes in each of the carriage crossbars.

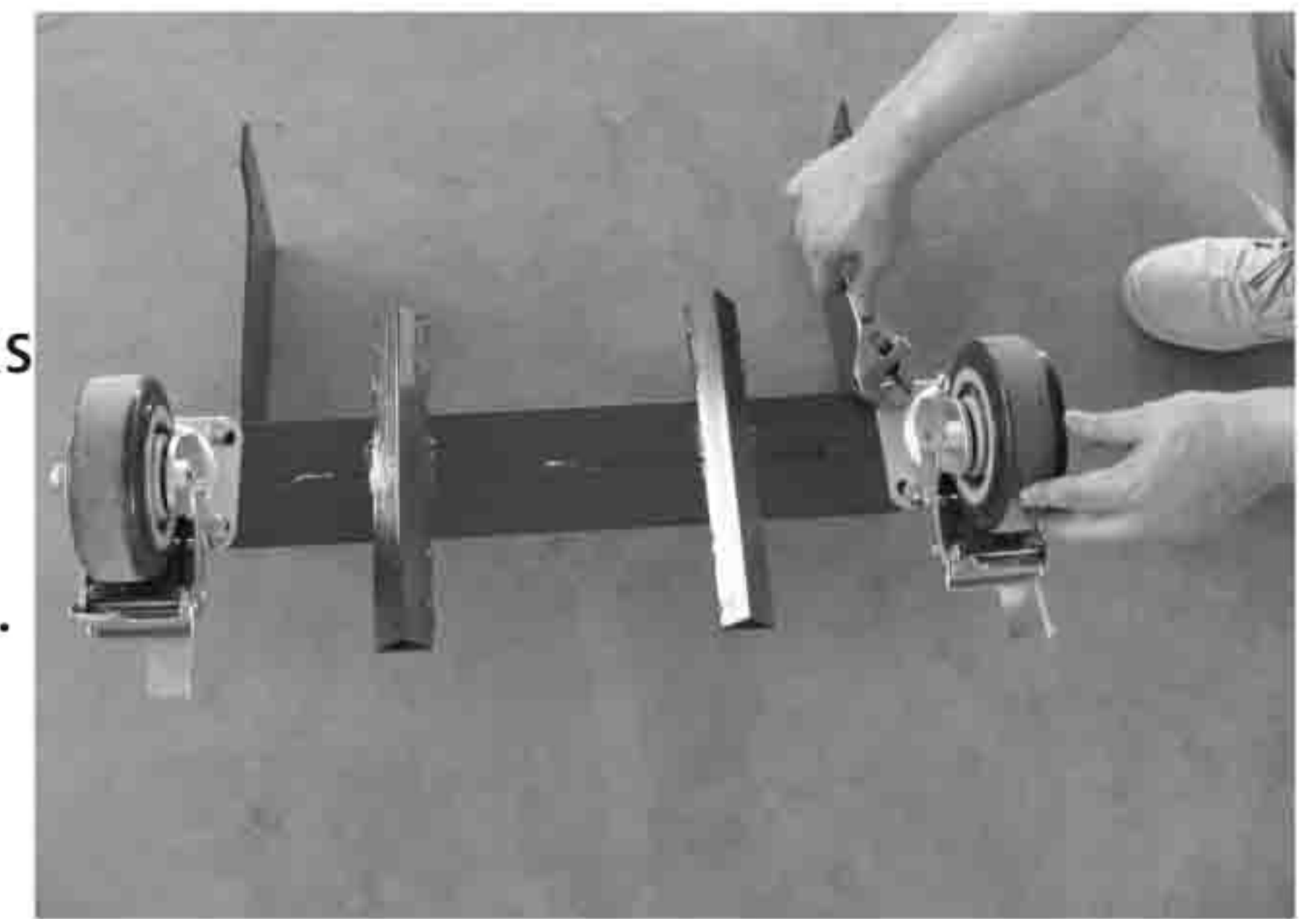


Lock the pins into place by swinging the ring portion of each pin downward

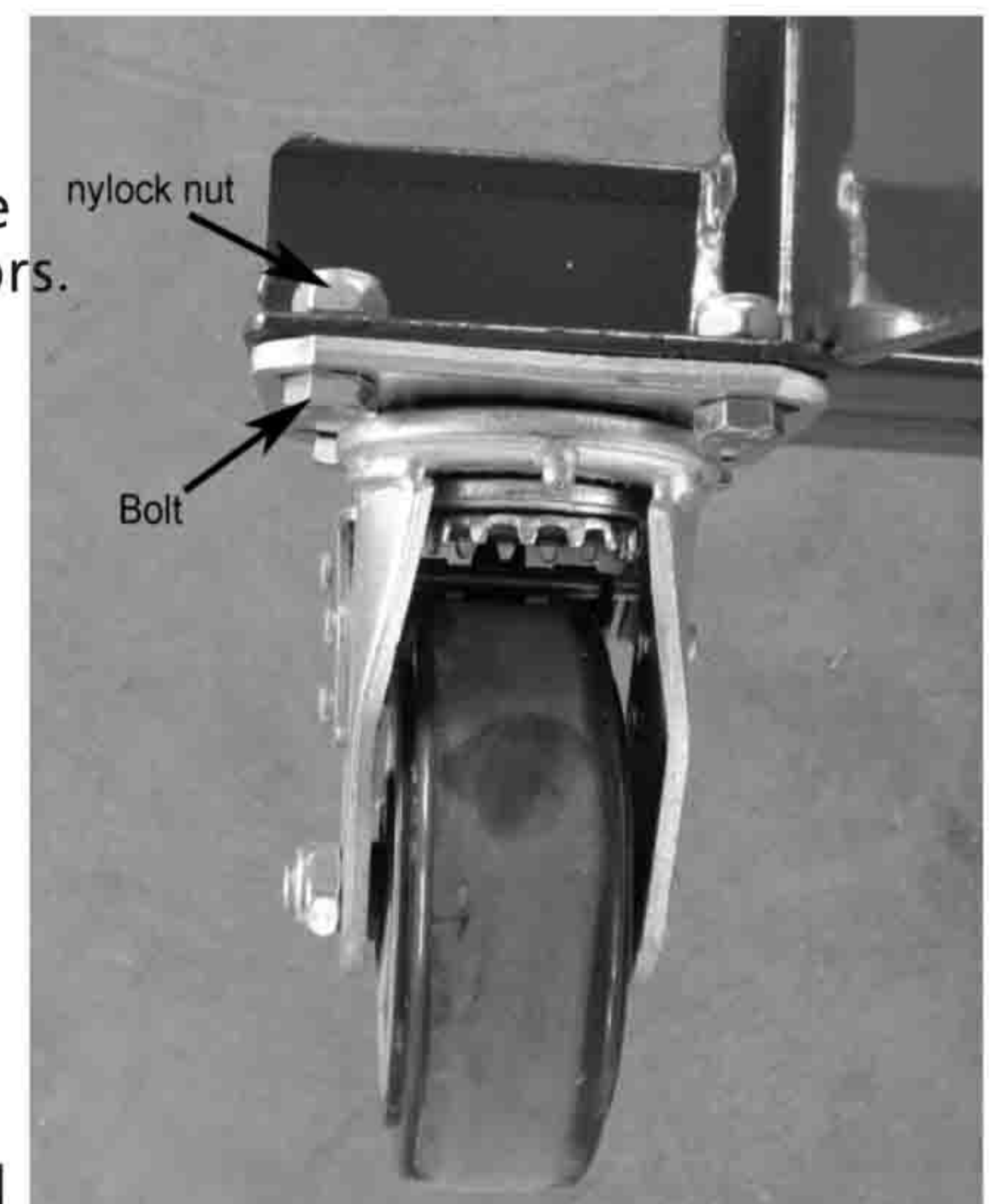
Step 4:

Lower the forks until they are a few inches above the support legs. Assembly is complete. Release the wheel brake to relocate the lift.

For 11N202A, 11N203A, 11N204A Step 1: Attach the 5 inch swivel castors to the counterweight support weldment



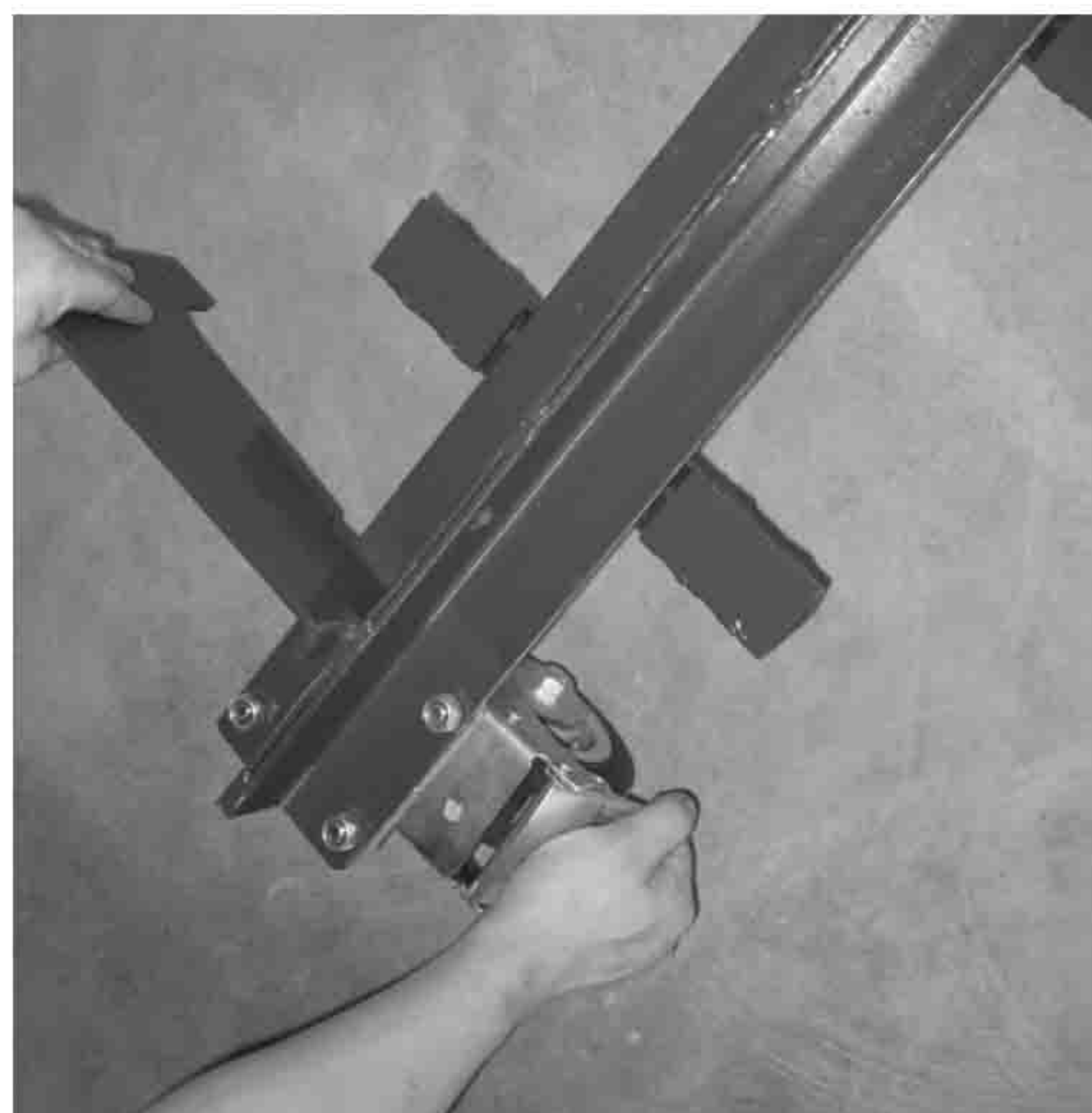
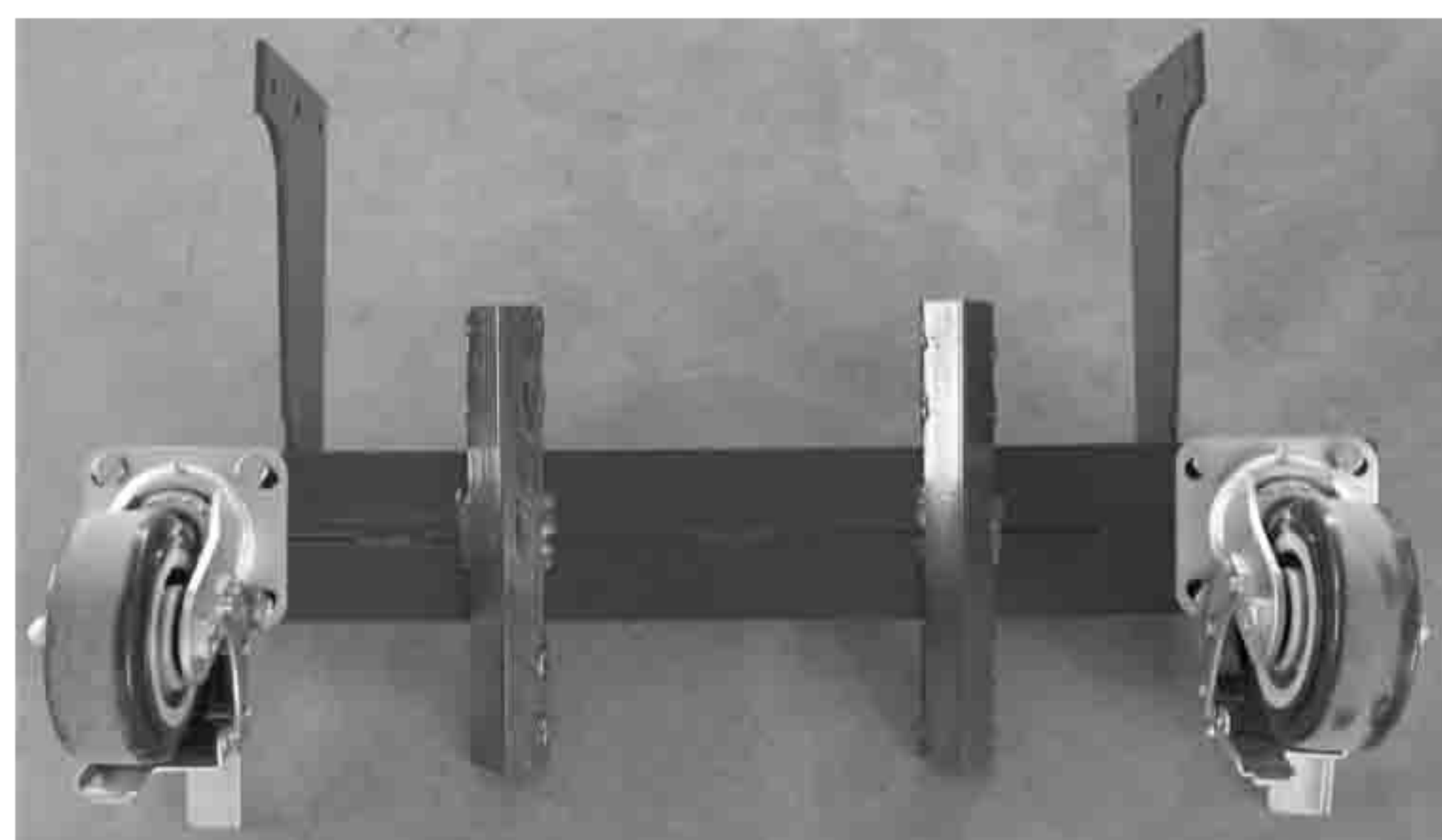
Turn the weldment over so that the underside faces upwards. Align the castors with the bolt holes in the weldment. Drop bolts through each of the holes. Secure each bolt with a nylock nut. Tighten all of the connections with a pair of wrenches.



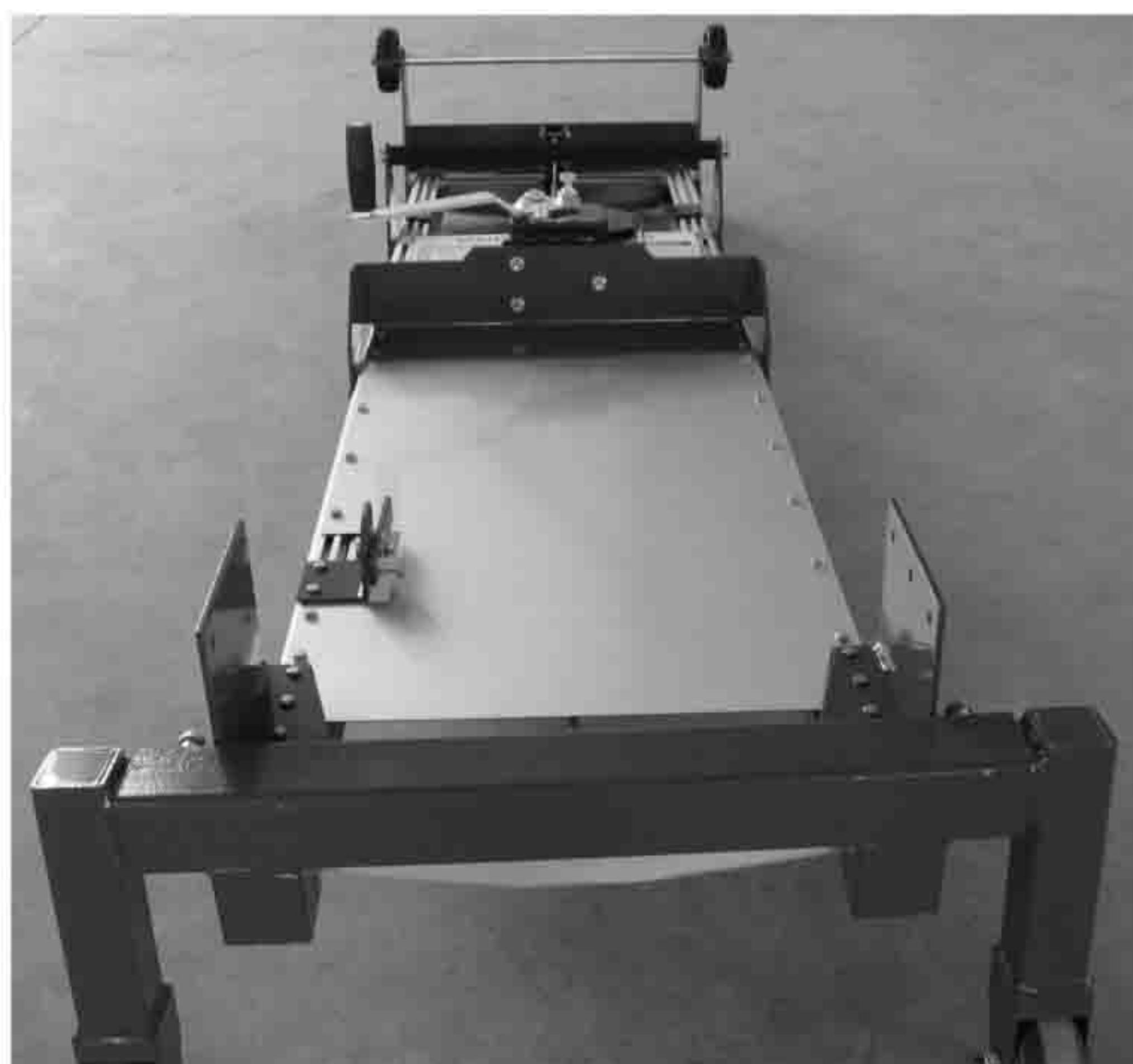
Dayton® Manual Material Lifts

ENGLISH

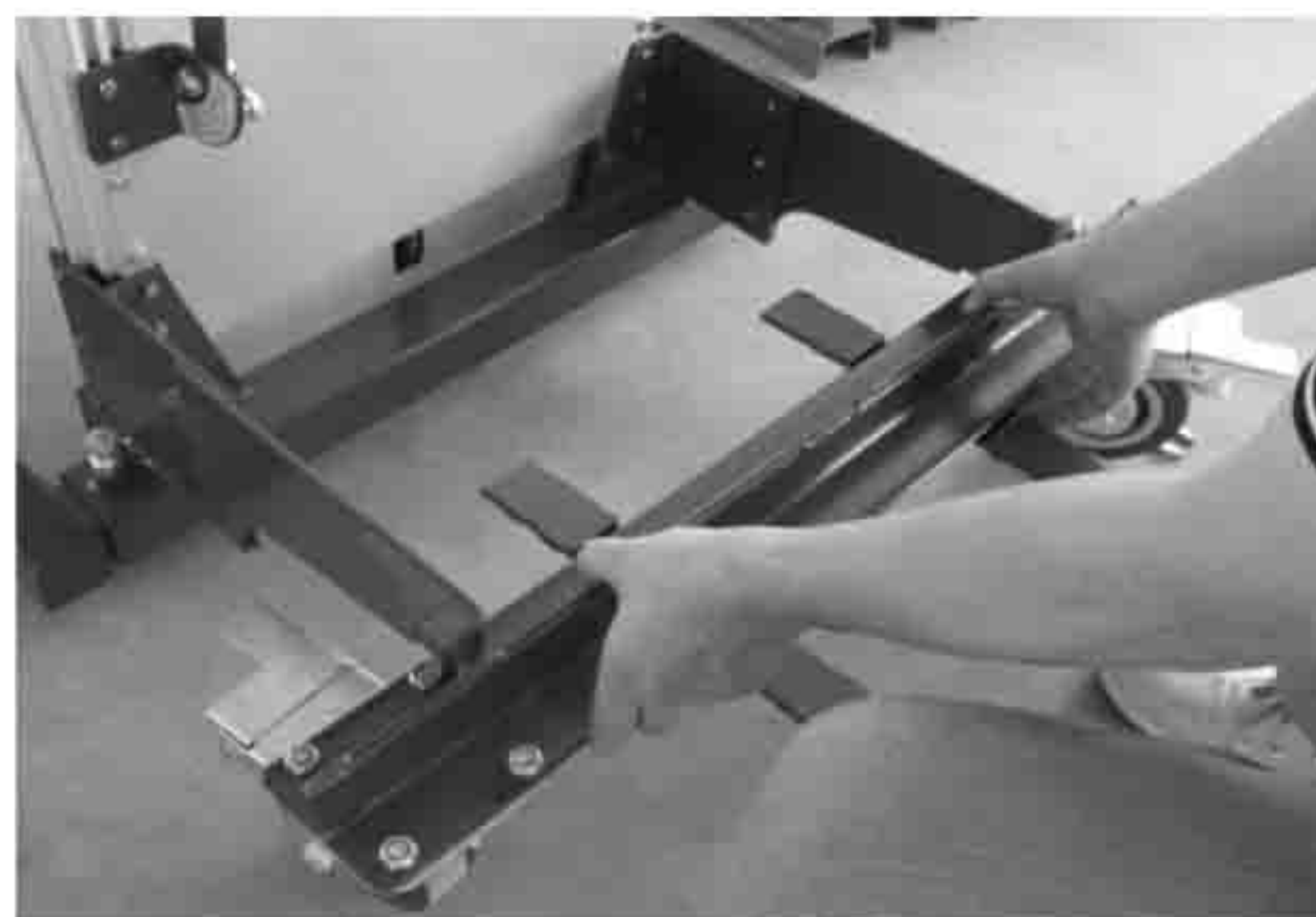
Step 2: Attach the weldment to the main assembly



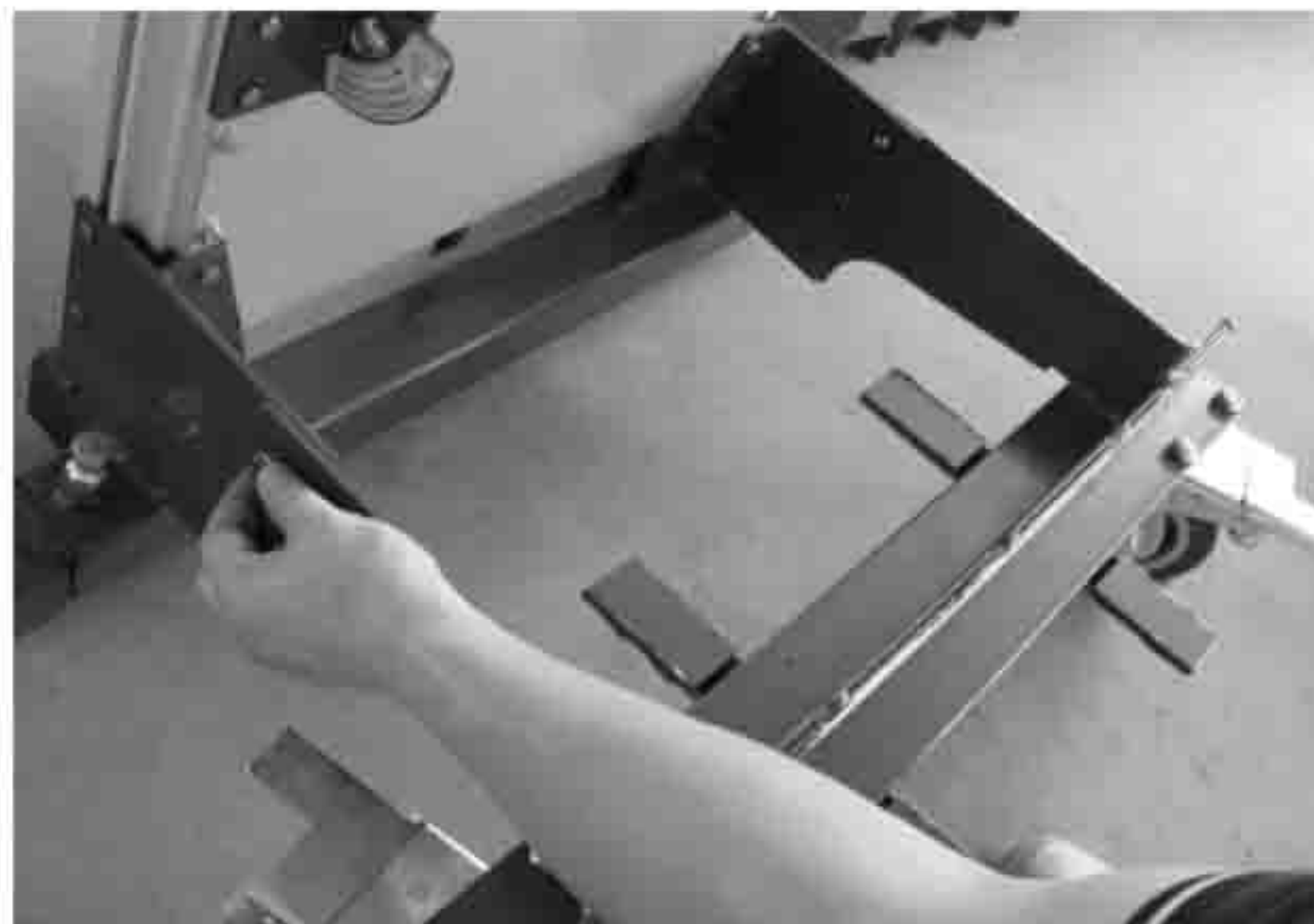
Lock both of the castors



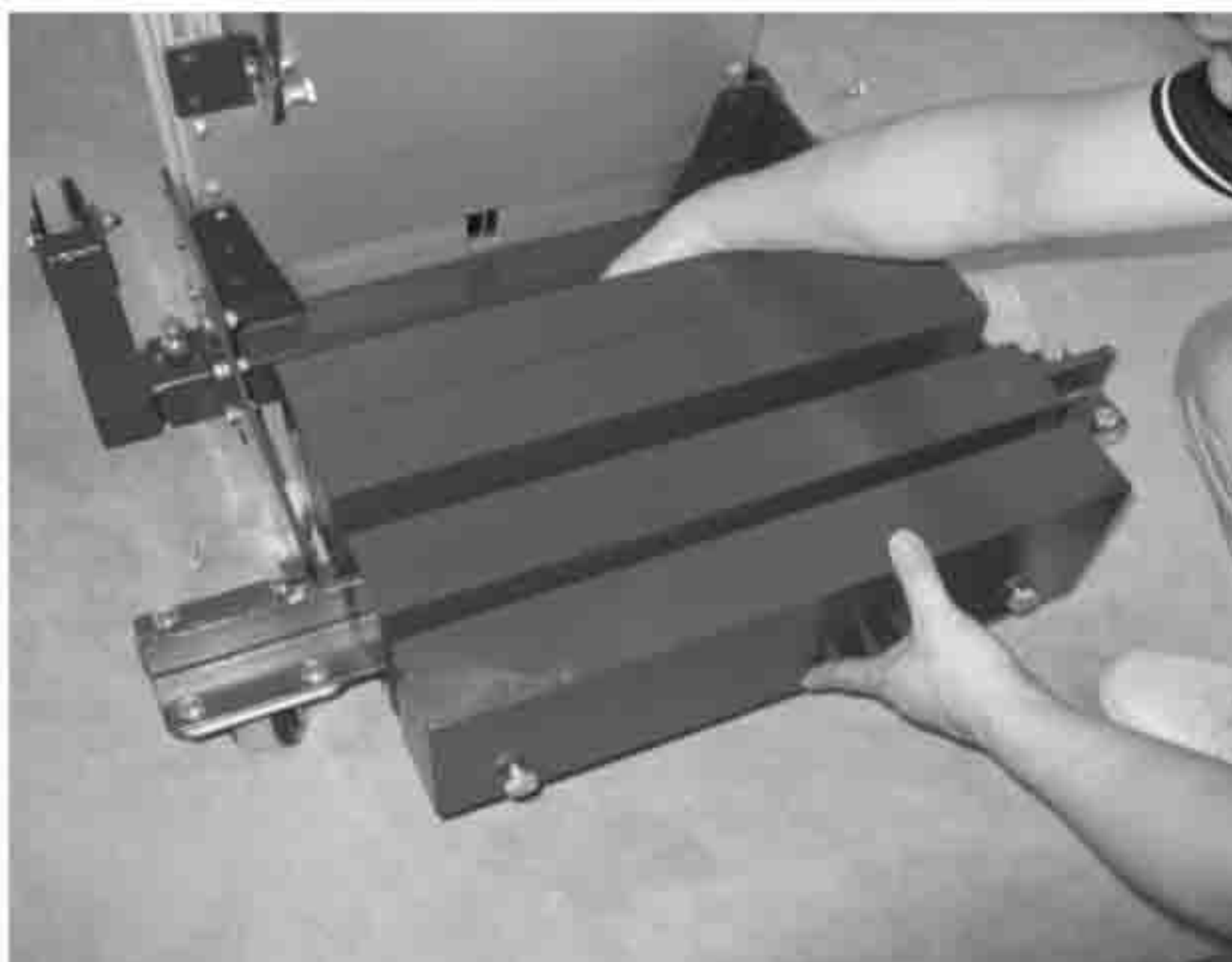
Lay the main assembly on the ground(winch side up)



Align the bolt holes in the weldment with the holes present in the weldment brackets



Bolt the weldment to the main assembly, and then secure the bolts with nuts



Set the four counterweights on the weldment; then insert the counterweight retaining bolts beginning with the outermost weight. fasten the bolts in place using a flat washer, followed by a lock washer and then a nut

Step 3: Fasten the winch handle to the winch body by following 11N196A model (step 2). Install and position the forks by following 11N196A model forks installation steps 3 & 4

Using the attachable Deck (For all models):



Slide the connecting channel (indicated with an arrow) under the lower carriage cross bar



Set the connecting channel on top of the lower carriage cross bar; let the deck rest on top of the forks

Function Tests

Do Not Operate Unless:

- You learn and practice the principles of safe machine operation contained in this operator's manual.
1. Avoid hazardous situations.
 2. Always perform a pre-operation inspection.
 3. Always perform function test prior to use. Know and understand the function tests before going on to the next section.
 4. Inspect the workplace.
 5. Only use the machine as it was intended.

Model 11N196A thru 11N204A

E
N
G
L
I
S
H

Fundamentals

The Function Tests are designed to discover any malfunctions before the machine is put into service. The operator must follow the step by-step instructions to test all machine functions. A malfunctioning machine must never be used. If malfunctions are discovered, the machine must be tagged and removed from service. Repairs to the machine may only be made by a qualified service technician, according to the manufacturer's specifications. After repairs are completed, the operator must perform a pre-operation inspection and function tests again before putting the machine into service.

FUNCTION TESTS

Select a test area that is firm, level and free of obstructions.

Setup

1. Tilt the machine back.
2. Slide each fork onto the carriage and secure it with

- the fork lock pins.
3. Slide each leg into a base socket until the leg lock pin snaps into the leg.
4. Stand the machine up.
5. Remove the winch handle, reverse the handle and install it. The handle grip should face the operator.
6. Straddle base: Adjust to desired width. Be sure the leg lock pin snaps into the leg.
7. Rotate the hold-down bar off of the carriage.

Load Platform

1. Lay the load platform onto the forks.
2. Lift the front of the load platform and push it toward the carriage until the back angle is under the lower fork mounting tube.
3. Rotate the load platform down until it locks into place over the forks.

Test the Brake Operation (if equipped)

1. Press down on the foot pedal to lock the brake.

2. Push the machine
Result: The wheels should not roll.
3. Pull up on the foot pedal to release the brake.
4. Push the machine.
Result: The machine should move.

Test the Winch Operation

Note: The model 11N197A, 11N201A and 11N202A does not have an inner frame.

1. Rotate the winch handle clockwise to raise the carriage.
Result: The carriage should raise to the top of the inner frame and then the inner frame should raise. The carriage and inner frame should move smoothly, free of hesitation and blinding.
2. Rotate the winch handle counterclockwise to lower the carriage.
Result: The inner frame and the carriage should lower into the outer frame. The carriage and inner frame should move smoothly, free of hesitation and binding.

Dayton[®] Manual Material Lifts

Workplace Inspection

Do Not Operate Unless:

You learn and practice the principles of safe machine operation contained in this operator's manual.

1. Avoid hazardous situations.
2. Always perform a pre-operation inspection.
3. Always perform function tests prior to use.
4. Inspect the workplace. Know and understand the workplace inspection before going on to the next section.
5. Only use the machine as it was intended

Fundamentals

The Workplace Inspection helps the operator determine if the workplace is suitable for safe machine operation. It should be performed by the operator prior to moving the machine to the workplace. It is to operator's responsibility to read and remember the workplace hazards, the watch for and

avoid them while moving, setting up and operating the machine.

Be aware of and avoid the following hazardous situations:

- Drop-offs or holes
- Bumps and floor obstructions
- Debris
- Overhead obstructions and high voltage conductors
- Hazardous locations
- Inadequate surface support to withstand all load forces imposed by the machine
- Wind and weather conditions
- All other possible unsafe conditions

Operating Instructions

Do Not Operate Unless:

You learn and practice the principles of safe machine operation contained in this operator's manual.

1. Avoid hazardous situations.
2. Always perform a pre-
3. Always perform function test prior to use

Fundamentals

Using the machine for any purpose other than lifting material is unsafe.

If more than one operator is expected to use a machine at different times in the same work shift, each operator is expected to follow all safety rules and instructions in the operator's manual. Therefore every new operator should perform a pre-operation inspection, function tests and a workplace inspection before using the machine.

Setup

Select an area that is firm, level and free of obstructions. Follow the Setup procedures in the Function Tests section.

Model 11N196A thru 11N204A

E
N
G
L
I
S
H

Raising and Lowering load-Manual Winch

1. Center the load on the forks or load platform
 2. Raise the load by firmly grasping the winch handle and rotating it clockwise. Do not allow the cable to wind unevenly onto the winch drum.
 3. Lower the load by firmly grasping the winch handle and rotating it counterclockwise. After lowering to the desired position, turn the winch handle clockwise (raise the load) 1/4 turn to set the brake.
- Avoid sudden starts and stops
 - Travel with the load in the lowest possible position
 - Keep personnel away from the machine and load
 - Do not tilt the machine back with a raised load

After Each Use

To prepare the machine for storage, remove the forks and legs and reverse the winch handle. Refer to the Setup procedure. Select a safe storage location-firm level surface, weather protected, clear of obstruction and traffic.

Moving Machine with a Load

It is best to move the machine on the work site with no load. Moving a raised load should be restricted to positioning for loading and unloading. If it is necessary to move the machine with a raised load, understand and obey the following safety rules:

- Make sure the area is level and clear of obstructions
- Make sure the load is centered on the forks or load platform

Dayton[®] Manual Material Lifts

Transport Instructions

Observe and Obey:

1. Be sure the vehicle capacity and loading surfaces are sufficient to support the machine weight. See Specifications section.
2. Do not load machine onto a vehicle unless it is parked on a level surface.
3. Remove the load from the forks, boom or load platform before loading for transport.
4. The transport vehicle must be secured to prevent rolling while the machine is being loaded.
5. The machine must be securely fastened to the transport vehicle.

Lifting Instructions

The number of people required to load and unload a machine is dependent on a number of factors, including but not limited to:

- The physical condition, strength and disabilities or prior injuries of the people involved
- The vertical and

horizontal distances the machine has to be moved

- The number of times the machines will be loaded or unloaded
- The stance, posture and grip used by the people involved
- The lifting techniques used
- The site conditions and weather in which the activity is being performed (i.e., slippery, icy, raining)

The appropriate number of people and proper lifting techniques must be used to prevent physical injury.

Loading for Transport

1. Fully lower the carriage.
2. Rotate the carriage hold-down bar over the carriage. Be sure the lock pin snaps into place.
3. Remove the winch handle, reverse the handle and install it. The handle grip should face the carriage.

Load Capacity Charts

Observe and Obey:

1. Failure to properly position the load may result in death or serious injury.
2. Verify that the load you wish to raise does not exceed the maximum load for your load center. See the load capacity charts on the next page.

▲ WARNING *Tip-over hazard: Raising a load that exceeds the machine capacity may result in death or serious injury. A load center is defined as the balancing point (center of gravity) of a load and must be positioned within the load center zone.*

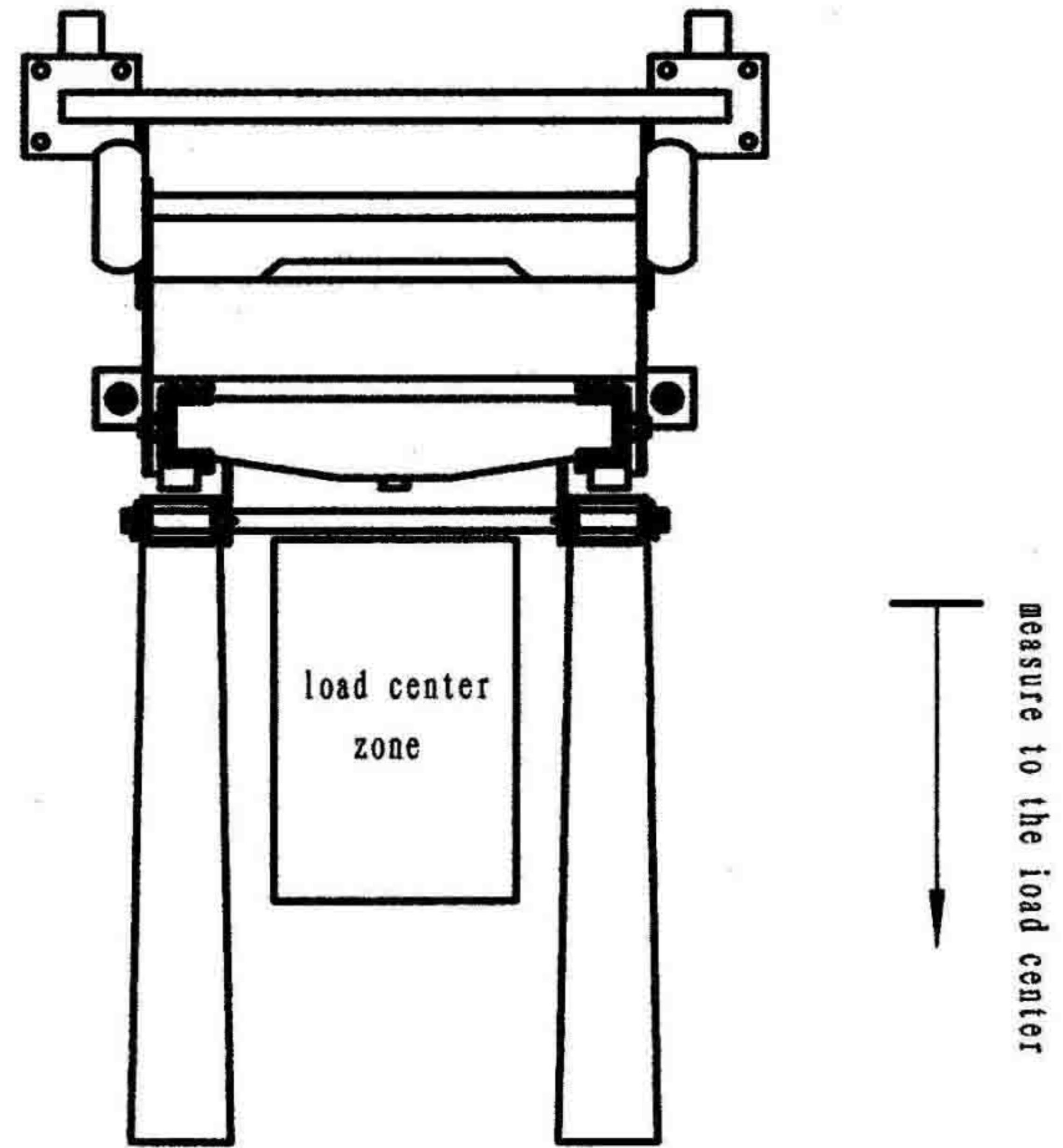
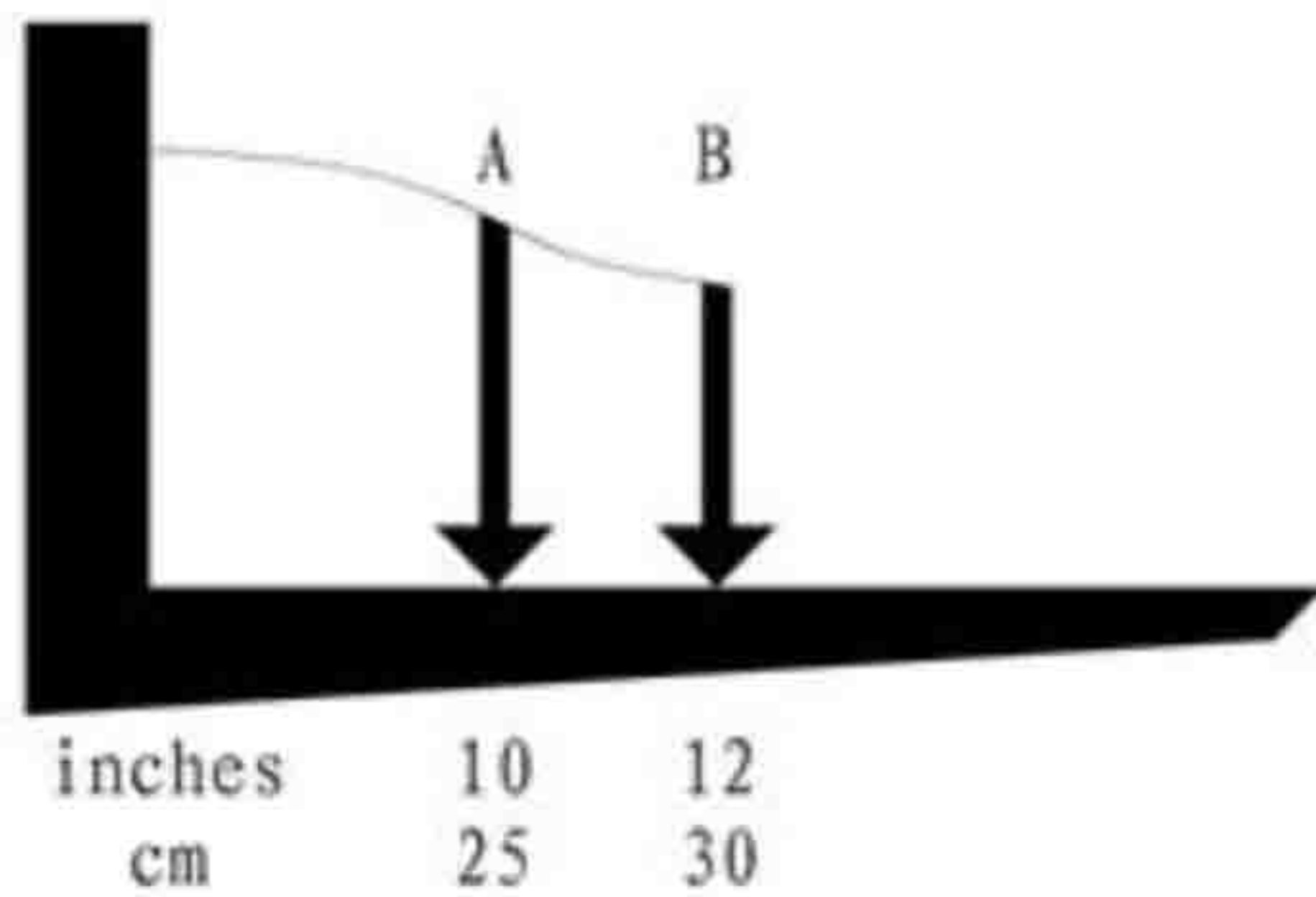
▲ WARNING *Tip-over hazard: Failure to position the load center within the load center zone may result in may death or serious injury.*

Model 11N196A thru 11N204A

E
N
G
L
I
S
H

Forks Load Positioning Instructions

- Determine the weight of the load and the location of its load center.
- Measure to the load center from the side of the load that will be closest to the carriage.
- Refer to the chart on the next page to determine if the machine is capable of lifting the weight at the location on the fork.
- Place the load so that it rests on the forks, as close to the carriage as possible.
- Position the load so that the load center is within the load center zone.



Forks Load Capacity Chart			
Inches		10	12
Model			
11N196 A	lbs	400	350
11N197 A	lbs	500	450
11N198 A	lbs	350	300
11N199 A	lbs	400	350
11N201 A	lbs	500	450
11N202 A	lbs	500	450
11N203 A	lbs	400	350
11N204 A	lbs	350	300

Maximum Load Centers (measure from front of carriage)

Forks:	12 in
Load Platform:	12 in

Dayton® Manual Material Lifts

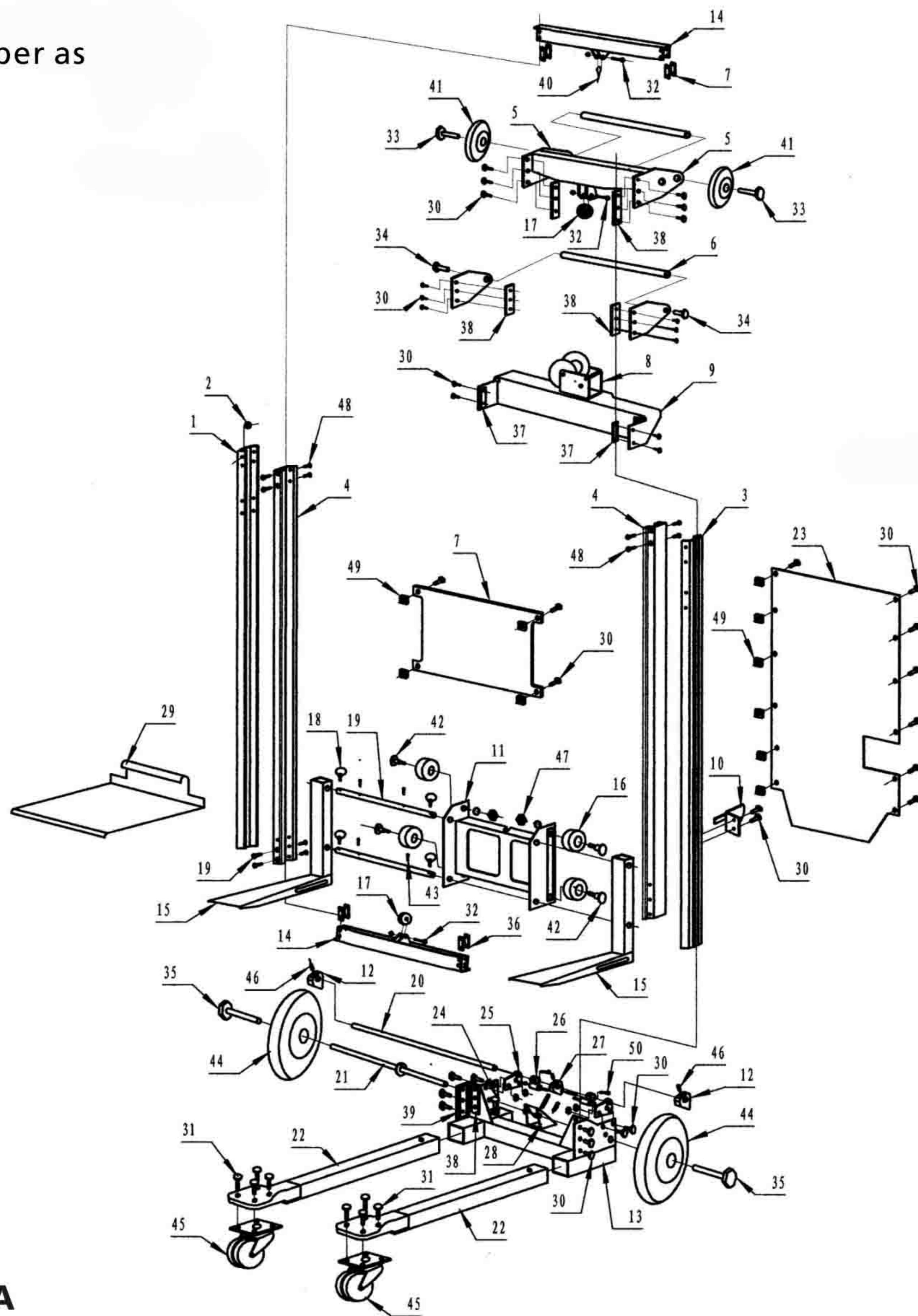
E
N
G
L
I
S
H

For Repair Parts, call 1-800-323-0620

24 hours a day 365 days a year

Please provide following information:

- Model number
- Serial number (if any)
- Part description and number as shown in parts list



11N196A, 11N197A

Model 11N196A thru 11N204A

11N196A, 11N197A PART LIST

Ref. No.	Description	Part No.	Qty.	Ref. No.	Description	Part No.	Qty.
1	Left Mast Frame	*	1	26	Brake Locating Assembly	*	2
2	Gasket	*	30	27	Brake Adjustment Block	*	1
3	Right Mast Frame	*	1	28	Pedal Assembly	*	1
4	Inner Frame	*	2	29	Deck Platform(option)	*	1
5	Up Support Frame Assembly	*	1	30	Hexagon Headed Bolt M6x12	*	38
6	Operator Handle	*	1	31	Hexagon Headed Bolt M8x25	*	8
7	Decal Plate	*	1	32	Hexagon Headed Bolt M10x60	*	3
8	Manual Winch	*	1	33	Hexagon Headed Bolt M12x70	*	2
9	Winch Mounting Support Bracket	*	1	34	Hexagon Headed Bolt M12x25	*	2
10	Limit Position Assembly	*	1	35	Hexagon Headed Bolt M14x90	*	2
11	Carriage	*	1	36	Fastness Plate(short)	*	8
12	Brake block	*	2	37	Fastness Plate	*	2
13	Base Assembly	*	1	38	Fastness Plate(long)	*	6
14	Beam	*	2	39	Elongated Fastness Plate	*	2
15	Fork	*	2	40	Cable Ring	*	1
16	Roller Wheel	*	4	41	Loading Wheels 4"	*	2
17	Upper and Lower Pulley	MH11N196A001G	3	42	Roll Wheel Central Spindle	*	4
18	Fork Lock Pin	MH11N196A002G	4	43	Spring Pin	*	4
19	Carriage Crossbars	*	2	44	Pneumatic Wheel 8"	*	2
20	Brake Shaft	*	1	45	Caster 2"	MH11N196A003G	2
21	Pedal Shaft Assembly	*	1	46	Holding Screw M8x12	*	2
22	Standard Support Legs	*	2	47	Hexagon Nut M10	*	4
23	Baffle Plate	*	1	48	Flat Head Screw M6x20	*	16
24	Spacer Pin	*	2	49	Square Nut M6	*	16
25	Brake Shaft Support Plate	*	2	50	Hexagon Headed Bolt M6x35	*	2

(*) Not available as repair parts

Dayton[®] Manual Material Lifts

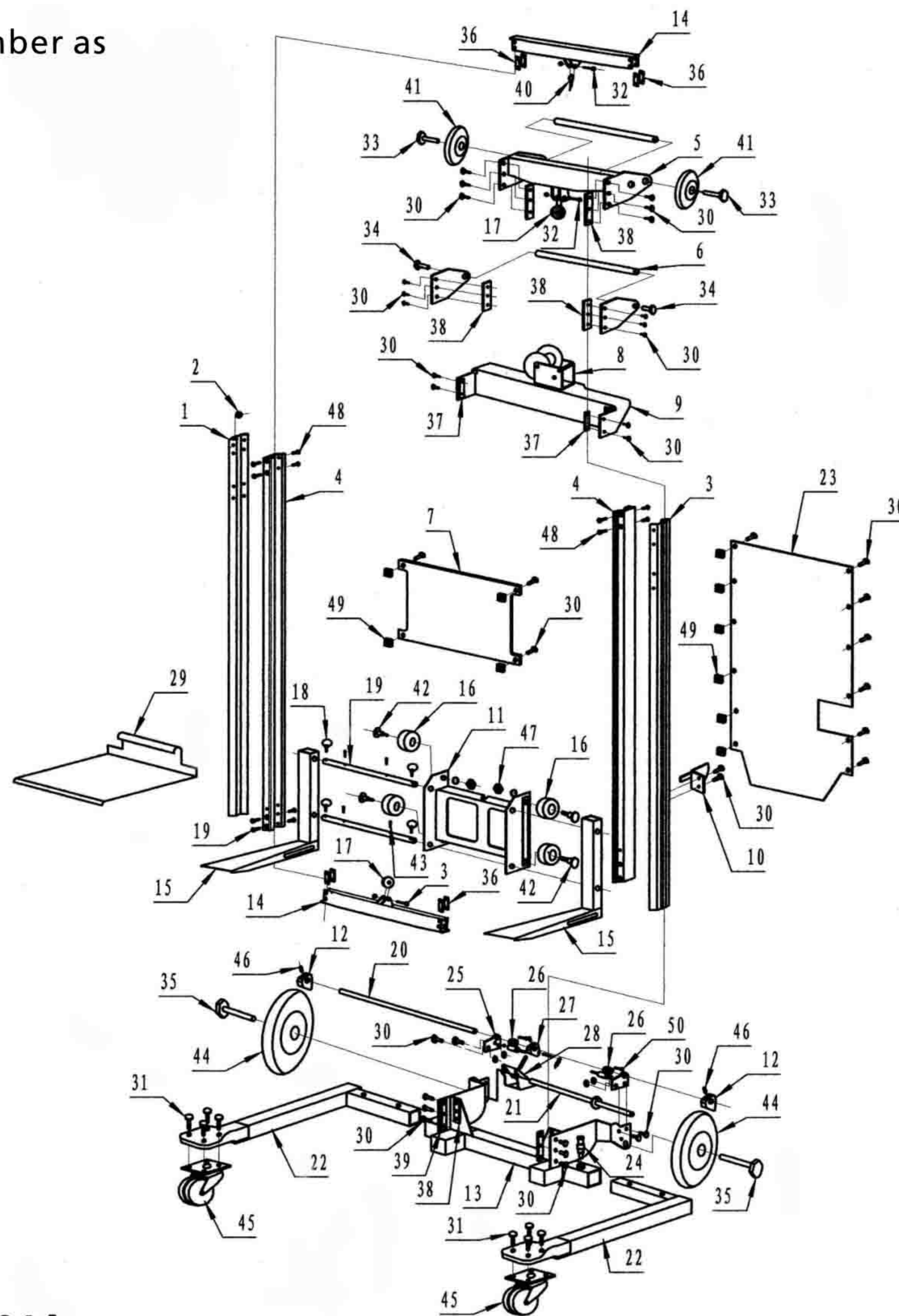
E
N
G
L
I
S
H

For Repair Parts, call 1-800-323-0620

24 hours a day 365 days a year

Please provide following information:

- Model number
- Serial number (if any)
- Part description and number as shown in parts list



11N198A, 11N199A, 11N201A

Model 11N196A thru 11N204A

11N198A,11N199A,11N201A PART LIST

Ref. No.	Description	Part No.	Qty.	Ref. No.	Description	Part No.	Qty.
1	Left Mast Frame	*	1	26	Brake Locating Assembly	*	2
2	Gasket	*	30	27	Brake Adjustment Block	*	1
3	Right Mast Frame	*	1	28	Pedal Assembly	*	1
4	Inner Frame	*	2	29	Deck Platform(option)	*	1
5	Up Support Frame Assembly	*	1	30	Hexagon Headed Bolt M6x12	*	38
6	Operator Handle	*	1	31	Hexagon Headed Bolt M8x25	*	8
7	Decal Plate	*	1	32	Hexagon Headed Bolt M10x60	*	3
8	Manual Winch	*	1	33	Hexagon Headed Bolt M12x70	*	2
9	Winch Mounting Support Bracket	*	1	34	Hexagon Headed Bolt M12x25	*	2
10	Limit Position Assembly	*	1	35	Hexagon Headed Bolt M14x90	*	2
11	Carriage	*	1	36	Fastness Plate(short)	*	8
12	Brake block	*	2	37	Fastness Plate	*	2
13	Base Assembly	*	1	38	Fastness Plate(long)	*	6
14	Beam	*	2	39	Elongated Fastness Plate	*	2
15	Fork	*	2	40	Cable Ring	*	1
16	Roller Wheel	*	4	41	Loading Wheels 4"	*	2
17	Upper and Lower Pulley	MH11N196A001G	3	42	Roll Wheel Central Spindle	*	4
18	Fork Lock Pin	MH11N196A002G	4	43	Spring Pin	*	4
19	Carriage Crossbars	*	2	44	Pneumatic Wheel 8"	*	2
20	Brake Shaft	*	1	45	Caster 2"	MH11N196A003G	2
21	Pedal Shaft Assembly	*	1	46	Holding Screw M8x12	*	2
22	Standard Support Legs	*	2	47	Hexagon Nut M10	*	4
23	Baffle Plate	*	1	48	Flat Head Screw M6x20	*	16
24	Spacer Pin	*	2	49	Square Nut M6	*	16
25	Brake Shaft Support Plate	*	2	50	Hexagon Headed Bolt M6x35	*	2

(*) Not available as repair parts

Dayton® Manual Material Lifts

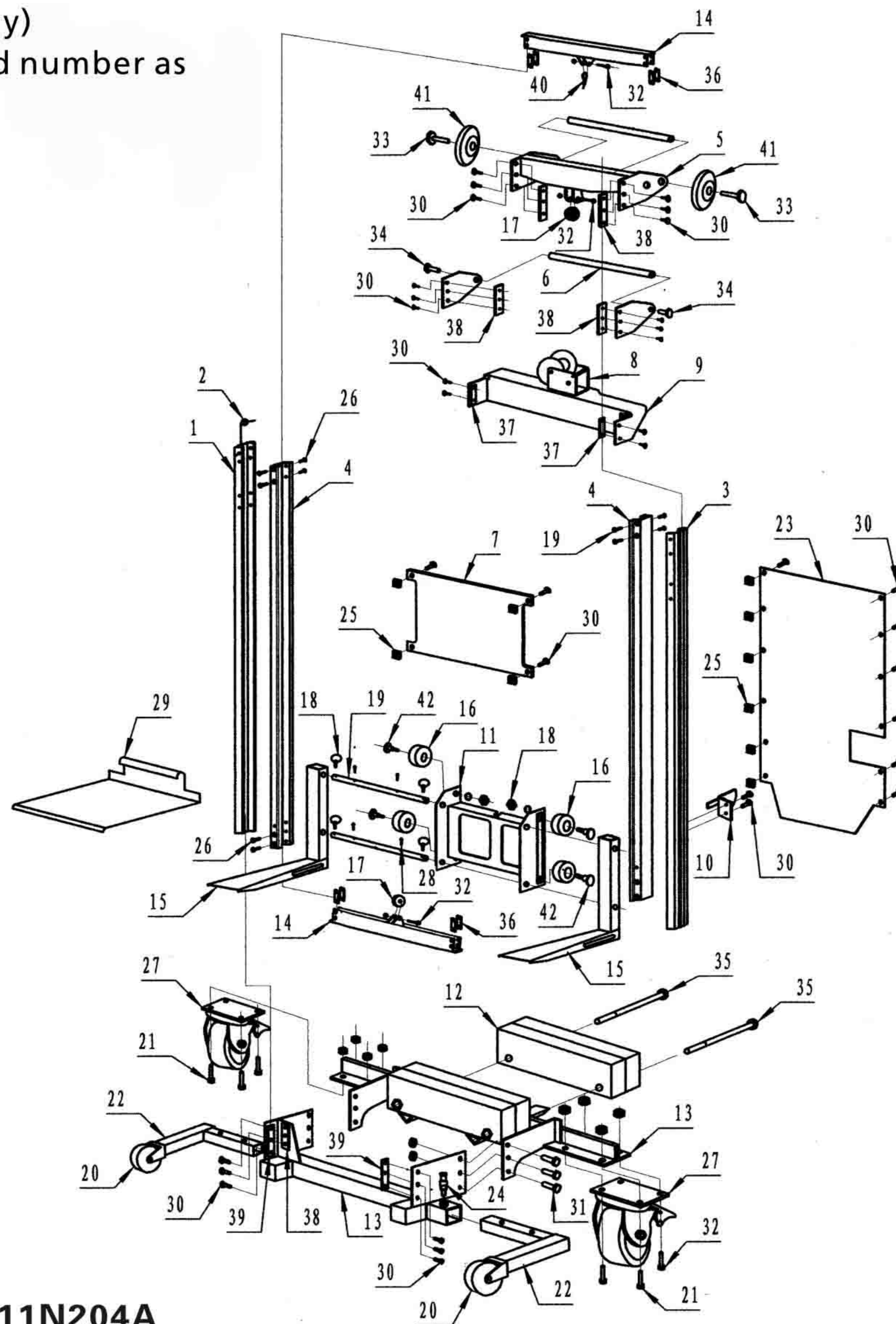
E
N
G
L
I
S
H

For Repair Parts, call 1-800-323-0620

24 hours a day 365 days a year

Please provide following information:

- Model number
- Serial number (if any)
- Part description and number as shown in parts list



11N202A, 11N203A, 11N204A

Model 11N196A thru 11N204A

11N202A, 11N203A, 11N204A PART LIST

Ref. No.	Description	Part No.	Qty.	Ref. No.	Description	Part No.	Qty.
1	Left Mast Frame	*	1	26	Flat Head Screw M6x20	*	2
2	Gasket	*	30	27	Swivel castor 5"	*	1
3	Right Mast Frame	*	1	28	Spring Pin	*	1
4	Inner Frame	*	2	29	Deck Platform(option)	*	1
5	Up Support Frame Assembly	*	1	30	Hexagon Headed Bolt M6x12	*	38
6	Operator Handle	*	1	31	Hexagon Headed Bolt M8x25	*	8
7	Decal Plate	*	1	32	Hexagon Headed Bolt M10x60	*	3
8	Manual Winch	*	1	33	Hexagon Headed Bolt M12x70	*	2
9	Winch Mounting Support Bracket	*	1	34	Hexagon Headed Bolt M12x25	*	2
10	Limit Position Assembly	*	1	35	Hexagon Headed Bolt M12x280	*	2
11	Carriage	*	1	36	Fastness Plate(short)	*	8
12	Counterweight Base	*	2	37	Fastness Plate	*	2
13	Counterweight Support Weldment	*	1	38	Fastness Plate(long)	*	6
14	Beam	*	2	39	Elongated Fastness Plate	*	2
15	Fork	*	2	40	Cable Ring	*	1
16	Roller Wheel	*	4	41	Loading Wheels 4"	*	2
17	Upper and Lower Pulley	MH11N196A001G	3	42	Roll Wheel Central Spindle	*	4
18	Fork Lock Pin	MH11N196A002G	4				
19	Carriage Crossbars	*	2				
20	Fixed Wheel 4"	*	1				
21	Hexagon Headed Bolt M10x25	*	1				
22	Adjustable Leg	*	2				
23	Baffle Plate	*	1				
24	Leg Lock Pin	*	2				
25	Square Nut M6	*	2				

(*) Not available as repair parts

Dayton® Manual Material Lifts

DAYTON ONE-YEAR LIMITED WARRANTY

DAYTON ONE-YEAR LIMITED WARRANTY. All Dayton® product models covered in this manual are warranted by Dayton Electric Mfg. Co. ("Dayton") to the original user against defects in workmanship or materials under normal use for one year after date of purchase. If the Dayton product is part of a set, only the portion that is defective is subject to this warranty. Any product or part which is determined to be defective in material or workmanship and returned to an authorized service location, as Dayton or Dayton's designee designates, shipping costs prepaid, will be, as the exclusive remedy, repaired or replaced with a new or reconditioned product or part of equal utility or a full refund given, at Dayton's or Dayton's designee's option, at no charge. For limited warranty claim procedures, see "Warranty Service" below. This warranty is void if there is evidence of misuse, mis-repair, mis-installation, abuse or alteration. This warranty does not cover normal wear and tear of Dayton products or portions of them, or products or portions of them which are consumable in normal use. This limited warranty gives purchasers specific legal rights, and you may also have other rights which vary from jurisdiction to jurisdiction.

WARRANTY DISCLAIMERS AND LIMITATIONS OF LIABILITY RELATING TO ALL CUSTOMERS FOR ALL PRODUCTS

LIMITATION OF LIABILITY. TO THE EXTENT ALLOWABLE UNDER APPLICABLE LAW, DAYTON'S LIABILITY FOR CONSEQUENTIAL AND INCIDENTAL DAMAGES IS EXPRESSLY DISCLAIMED. DAYTON'S LIABILITY IN ALL EVENTS IS LIMITED TO AND SHALL NOT EXCEED THE PURCHASE PRICE PAID.

WARRANTY DISCLAIMER. A DILIGENT EFFORT HAS BEEN MADE TO PROVIDE PRODUCT INFORMATION AND ILLUSTRATE THE PRODUCTS IN THIS LITERATURE ACCURATELY; HOWEVER, SUCH INFORMATION AND ILLUSTRATIONS ARE FOR THE SOLE PURPOSE OF IDENTIFICATION, AND DO NOT EXPRESS OR IMPLY A WARRANTY THAT THE PRODUCTS ARE MERCHANTABILITY, OR FIT FOR A PARTICULAR PURPOSE, OR THAT THE PRODUCTS WILL NECESSARILY CONFORM TO THE ILLUSTRATIONS OR DESCRIPTIONS. EXCEPT AS PROVIDED BELOW, NO WARRANTY OR AFFIRMATION OF FACT, EXPRESSED OR IMPLIED, OTHER THAN AS STATED IN THE "LIMITED WARRANTY" ABOVE IS MADE OR AUTHORIZED BY DAYTON.

PRODUCT SUITABILITY. MANY JURISDICTIONS HAVE CODES AND REGULATIONS GOVERNING SALES, CONSTRUCTION, INSTALLATION, AND/OR USE OF PRODUCTS FOR CERTAIN PURPOSES, WHICH MAY VARY FROM THOSE IN NEIGHBORING AREAS. WHILE ATTEMPTS ARE MADE TO ASSURE THAT DAYTON PRODUCTS COMPLY WITH SUCH CODES, DAYTON CANNOT GUARANTEE COMPLIANCE, AND CANNOT BE RESPONSIBLE FOR HOW THE PRODUCT IS INSTALLED OR USED. BEFORE PURCHASE AND USE OF A PRODUCT, REVIEW THE SAFETY/SPECIFICATIONS, AND ALL APPLICABLE NATIONAL AND LOCAL CODES AND REGULATIONS, AND BE SURE THAT THE PRODUCT, INSTALLATION, AND USE WILL COMPLY WITH THEM.

CONSUMERS ONLY. CERTAIN ASPECTS OF DISCLAIMERS ARE NOT APPLICABLE TO CONSUMER PRODUCTS SOLD TO CONSUMERS; (A) SOME JURISDICTIONS DO NOT ALLOW THE EXCLUSION OR LIMITATION OF INCIDENTAL OR CONSEQUENTIAL DAMAGES, SO THE ABOVE LIMITATION OR EXCLUSION MAY NOT APPLY TO YOU; (B) ALSO, SOME JURISDICTIONS DO NOT ALLOW A LIMITATION ON HOW LONG AN IMPLIED WARRANTY LASTS, SO THE ABOVE LIMITATION MAY NOT APPLY TO YOU; AND (C) BY LAW, DURING THE PERIOD OF THIS LIMITED WARRANTY, ANY IMPLIED WARRANTIES OF MERCHANTABILITY OR FITNESS FOR A PARTICULAR PURPOSE APPLICABLE TO CONSUMER PRODUCTS PURCHASED BY CONSUMERS, MAY NOT BE EXCLUDED OR OTHERWISE DISCLAIMED.

THIS LIMITED WARRANTY ONLY APPLIES TO UNITED STATES PURCHASERS FOR DELIVERY IN THE UNITED STATES.

WARRANTY SERVICE

To obtain warranty service if you purchased the covered product directly from W.W. Grainger, Inc. ("Grainger"), (i) write or call or visit the local Grainger branch from which the product was purchased or another Grainger branch near you (see www.grainger.com for a listing of Grainger branches); or (ii) contact Grainger by going to www.grainger.com and clicking on the "Contact Us" link at the top of the page, then clicking on the "Email us" link; or (iii) call Customer Care (toll free) at 1-888-361-8649. To obtain warranty service if you purchased the covered product from another distributor or retailer, (i) go to www.grainger.com for Warranty Service; (ii) write or call or visit a Grainger branch near you; or (iii) call Customer Care (toll free) at 1-888-361-8649. In any case, you will need to provide, to the extent available, the purchase date, the original invoice number, the stock number, a description of the defect, and anything else specified in this Dayton One-Year Limited Warranty. You may be required to send the product in for inspection at your cost. You can follow up on the progress of inspections and corrections in the same ways. Title and risk of loss pass to buyer on delivery to common carrier, so if product was damaged in transit to you, file claim with carrier, not retailer, Grainger or Dayton. For warranty information for purchasers and/or delivery outside the United States, please use the following applicable contact information:

**Dayton Electric Mfg. Co.,
100 Grainger Parkway, Lake Forest, IL 60045 U.S.A.
or call +1-888-361-8649**