

# The Maxi-Lift<sup>®</sup>

Manually Propelled Winch Operated Elevating Aerial Platform

**CAUTION**

**READ  
CAREFULLY  
BEFORE  
OPERATING  
THIS UNIT**

**DO NOT REMOVE  
MANUAL FROM UNIT**

## **THE MAXI-LIFT<sup>®</sup> OPERATION, MAINTENANCE AND TRAINING MANUAL**

**Cotterman<sup>®</sup>**

**P. O. BOX 168  
130 SELTZER ROAD  
CROSWELL, MI 48422-0168**

**1-810-679-4400  
FAX: 1-810-679-4510  
E-MAIL: [info@cotterman.com](mailto:info@cotterman.com)**

## Table of Contents

Warning	1
Before Using	1
Operation	2
Maintenance	2
Replacement Parts List	3
Frame Component Identification	4
Lift System Part Identification	5

### APPENDIX "A"

Operator Training Verification	A1
Maintenance Training Verification	A2
DANGER WARNING	A3

Reading and understanding the Manual of Responsibilities booklet included with this manual is **REQUIRED** by the Dealer, Owner, User, and Operator of this unit.

# WARNING!

DEATH or SERIOUS INJURY can result from improper use.

## Electrocution Hazard:

DEATH or SERIOUS INJURY will result from electrical contact or inadequate clearance.

Machine IS NOT insulated.

Assume all electrical parts and wires are energized unless known otherwise.

Maintain minimum safe approach distance (MSAD) from electrical power lines and apparatus, per OSHA 1910.333.

You MUST allow for platform sway, rock, or sag.

Work platform DOES NOT provide protection from contact with or proximity to electrically charged conductors.

## Proper training requirements before using this equipment:

ONLY properly trained and authorized personnel are permitted to operate aerial platform.

Read and understand contents of Instruction Manual, including the Manual of Responsibilities.

View and understand training video supplied with this unit.

Complete and pass required proficiency examination.

Refer to instruction manual located inside equipment door.

Contact your supervisor for availability.

If instruction manual is missing or new video is needed call: 1-800-552-3337.

This unit meets or exceeds all applicable OSHA standards, and has been inspected for safety and proper operation by the manufacturer

## Operation configuration:

Outriggers MUST be extended fully and jacks placed in contact with surface before use.

DO NOT move unit with person on platform.

Use only on firm level surface.

DO NOT use near moving vehicles or where collision is possible.

Keep platform clean.

Check for wear or damage before each use.

Refer to this instruction manual for required, frequent inspections and maintenance.

For continued safe operation, replacement parts MUST be purchased from manufacturer only.

DO NOT substitute any part without written permission from manufacturer.

Safety cage must be raised and locked before raising platform.

Maximum platform height: 15 feet

Maximum platform load, user and equipment: 300 lbs

Maximum allowed horizontal force, top rail: 50 lbs

Weight: 673 lbs

Maximum wheel/outrigger load exerted: 285 lbs.

Intended for use by only one (1) person at a time.

## **Before using:**

1. Remove all packing materials and inspect for damage.
2. Remove foreign materials which may block moving parts.
3. Raise safety cage and lock in position.
4. Raise platform and check for proper operation. **DO NOT** continue if **ANY** problem is encountered.
5. Read the previous safety precautions before using The Maxi-Lift®.

## Operation:

1. Extend outriggers and lock with pins provided.
2. Screw jacks down to contact floor and remove weight from casters.
3. Make sure THE MAXI-LIFT® is situated in proper position on a level, firm base.
4. Outrigger jacks must be screwed down into contact with floor surface.  
**NOTE: DO NOT LIFT WHEELS OFF OF FLOOR SURFACE!**
5. **DO NOT use on incline.** A level indicator is provided below the winch on The Maxi-Lift® frame. If unit is not level, re-position unit until level is indicated.
6. Raise safety cage and lock in place.
7. Crank platform to desired height and then climb to platform and close gate.
8. To lower, disengage safety dog and turn the hand-crank in the opposite direction. The safety dog must be engaged while elevating and at all times while platform is occupied.
9. To move The Maxi-Lift®, lower platform and cage, crank up jacks and slide outriggers in.

## Maintenance:

### Apply light oil as necessary to:

1. Screw jacks.
2. Cable pulleys.
3. Cage Pivots and Lock Bolts.
4. Gate Hinge and Latch.
5. Winch Bearings (**DO NOT** allow oil to contact brake pad).

### Apply light grease as necessary to:

1. Contact points in column assembly.
2. Winch gears (**DO NOT** allow grease to contact brake pad).
3. Caster axles (using grease gun).

### Check and adjust or replace the following as necessary:

1. Worn lift cables.
2. Cable pulley bearings.
3. Winch brake disc.

## Replace damaged or worn components prior to use.

Refer to following figures and component part listings when ordering replacement parts. Contact company for pricing and availability.

Please have following information ready for parts and technical support:

1. THE MAXI-LIFT® Model Number and Serial Number.
2. Part Description and Part Number.

**All replacement parts must be ordered direct from**

**Cotterman®**

**P.O. BOX 168**

**CROSWELL, MICHIGAN 48422**

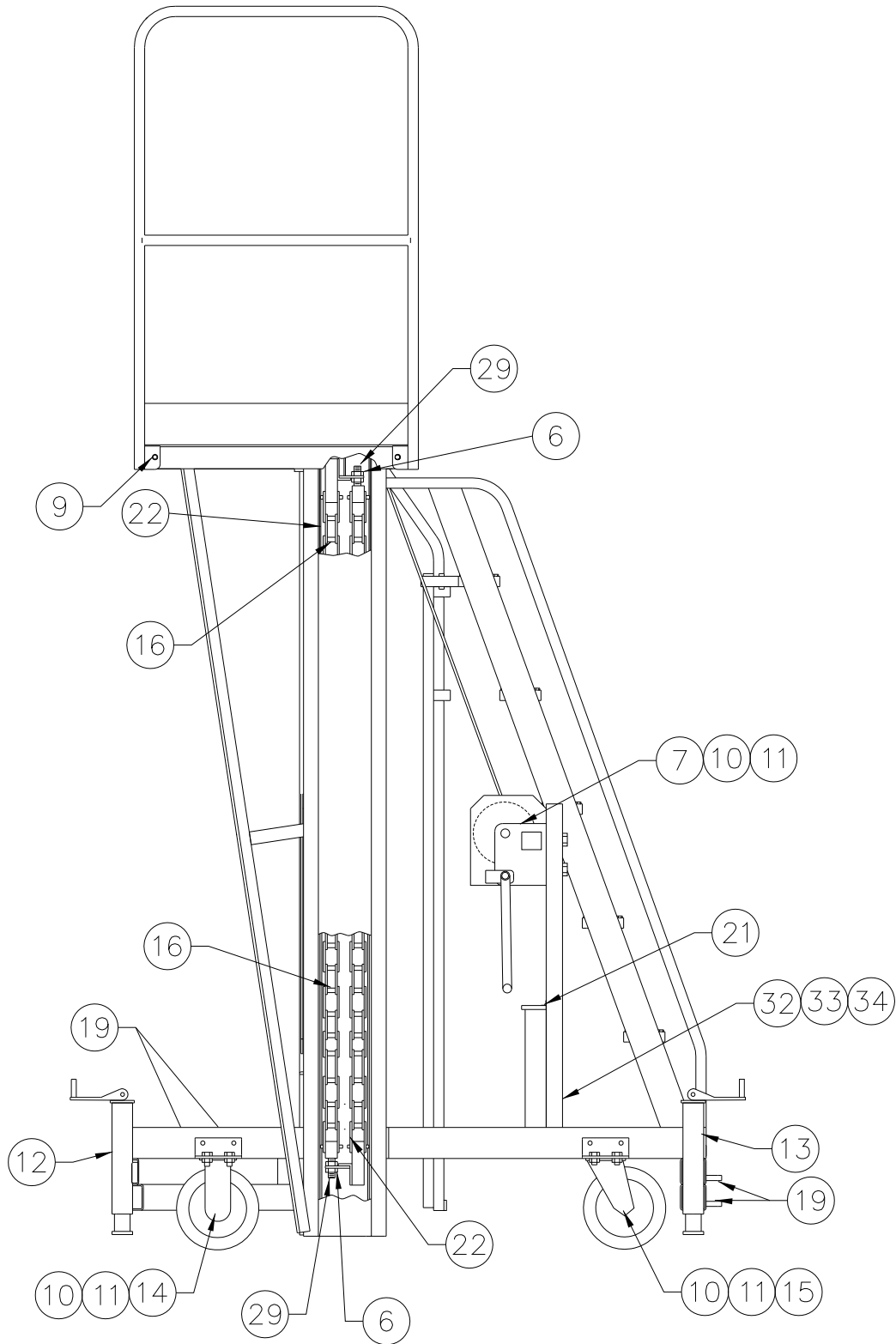
**PHONE: (810) 679-4400 FAX: (810) 679-4510**

**E-MAIL: [info@cotterman.com](mailto:info@cotterman.com)**

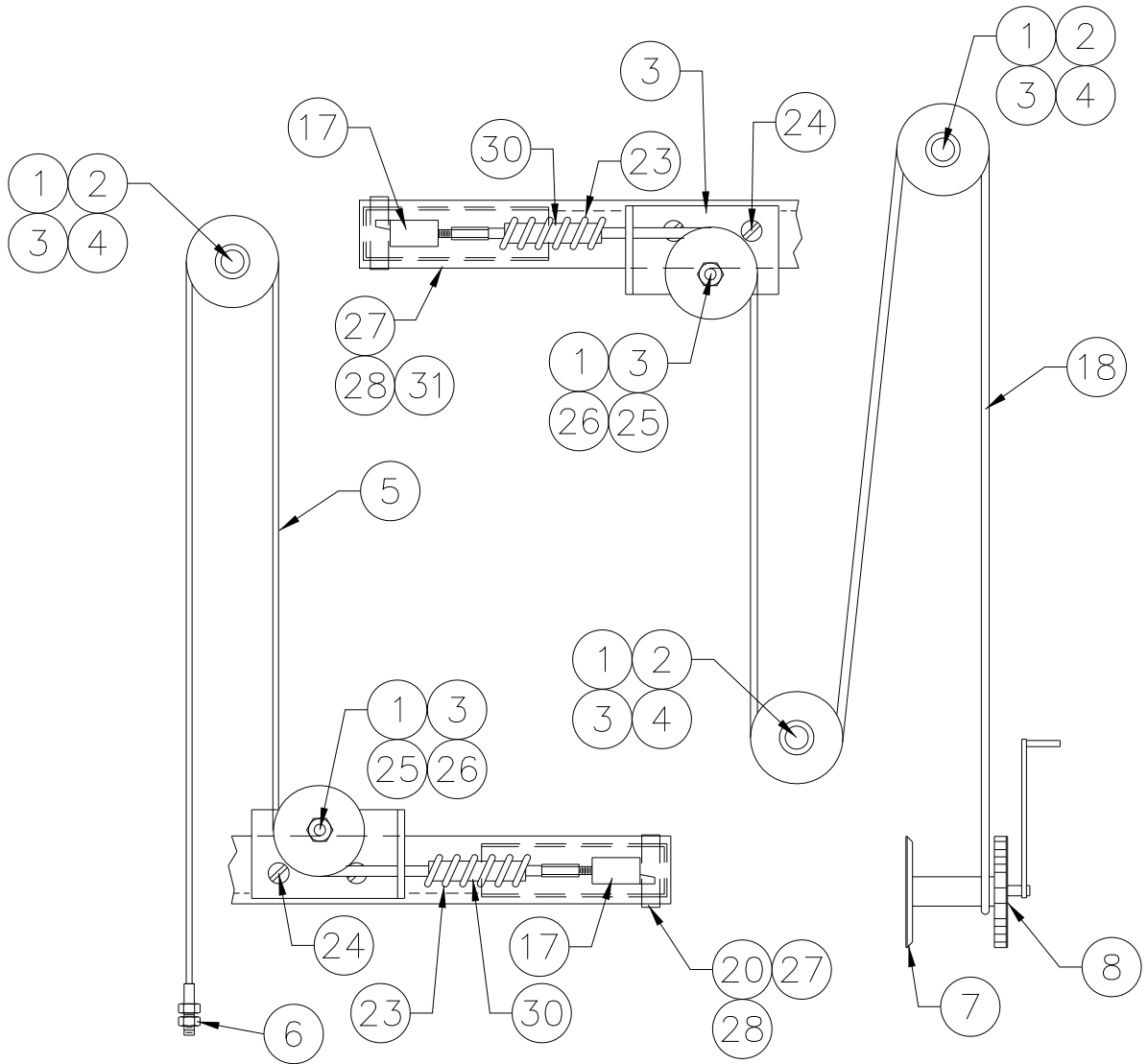
**Replacement Parts List: Model ML-15W. Refer to following figures.**

<b>ITEM</b>	<b>PART NUMBER</b>	<b>DESCRIPTION</b>
1	A-301-1018	WIRE ROPE SHEAVE
2	A-301-0157	3/4 X 2 CLEVIS PIN (SHAFT)
3	B-009-0060	CABLE LIFT GUIDE PLATE
4	A-301-0535	1/8 X 1 1/2 COTTER PIN
5	B-009-0063	UPPER LIFT CABLE
6	A-301-4404	CABLE ANCHOR LOCKNUT W / NYLON INSERT
7	C-009-0094	WINCH ASSEMBLY
8	A-301-1116	WIRE ROPE CLAMP
9	A-301-1114	1/2 X 1/2 SHOULDER BOLT
10	A-301-0988	3/8 - 16 LOCKNUT W / NYLON INSERT
11	A-301-0452	3/8 - 16 HEX HEAD CAP SCREW
12	A-009-0001	FRONT UPPER OUTRIGGER
	A-009-0002	FRONT LOWER OUTRIGGER
13	A-009-0003	REAR UPPER OUTRIGGER
	A-009-0004	REAR LOWER OUTRIGGER
14	A-301-0302	8" RIGID CASTER
15	A-301-0203	8" SWIVEL CASTER
16	A-009-0268	SAFETY BRAKE CHAIN
17	B-009-0058	BRAKE STOP PLUNGER
18	B-009-0093	LOWER LIFT CABLE
19	A-009-0386	OUTRIGGER LOCK PIN
20	C-009-0043	UPPER CABLE LIFT SPACER (BOTTOM)
21	A0091000	The Maxi-Lift TRAINING VIDEO
22	A-301-1143	ROLLER CHAIN LINK
23	A-301-1146	COMPRESSION SPRING
24	A-301-1149	3/8 - 16 X 1 FLAT HEAD MACHINE SCREW
25	A-301-1150	3/4 - 10 X 2 HEX HEAD CAP SCREW
26	A-301-1151	3/4 - 10 LOCKNUT W / NYLON INSERT
27	A-301-1301	1/2 - 13 X 1 1/2 HEX HEAD CAP SCREW
28	A-301-4404	1/2 - 13 LOCKNUT W / NYLON INSERT
29	A-009-0185	CHAIN ANCHOR BOLT
30	A-009-0216	SPRING SPACER SLEEVE
31	B-009-0102	LOWER CABLE LIFT SPACER (TOP)
32	A-301-0101	LEVEL VIAL WITH FLANGE
33	A-301-0619	TINNERMAN CLIP
34	A-301-0620	6-32 X 1 PH. RD HD SCREW Z/P (2 REQD)
--	--	LABELS (PLEASE CONTACT COTTERMAN CO.)

# Frame Component Identification



# Lift System Part Identification



# The Maxi-Lift® Appendix “A”

## Operator Training Information Verification

This is to Certify that I have received training in the proper Operation and Safe use of THE MAXI-LIFT®.

I hereby declare that I have:

1. Viewed and understand the training video supplied with THE MAXI-LIFT®.
2. Read and understand the MANUFACTURER’S OPERATING INSTRUCTIONS and SAFETY RULES or have been trained by a QUALIFIED PERSON on the OPERATING INSTRUCTIONS and SAFETY RULES contained in the MANUFACTURER’S OPERATING, TRAINING and MAINTENANCE MANUAL.
3. Read and understand ALL Decals, Labels, Warnings, and Instructions on THE MAXI-LIFT®.

I have been given an opportunity to ask questions about THE MAXI-LIFT® Operation and Safety Procedures.

I have read and understand the above statements.

EMPLOYEE NAME: \_\_\_\_\_ DATE: \_\_\_\_\_

EMPLOYEE SIGNATURE: \_\_\_\_\_

WITNESS: \_\_\_\_\_



# Maintenance Training Information Verification

This is to Certify that I have received training in the proper Maintenance Procedures of THE MAXI-LIFT®.

I hereby declare that I have:

1. Viewed and understand the training video supplied with THE MAXI-LIFT®.
2. Read and understand the MANUFACTURER'S MAINTENANCE INSTRUCTIONS and SAFETY RULES or have been trained by a QUALIFIED PERSON on the OPERATING INSTRUCTIONS and SAFETY RULES contained in the MANUFACTURER'S OPERATING, TRAINING and MAINTENANCE MANUAL.
3. Read and understand ALL Decals, Labels, Warnings, and Instructions on THE MAXI-LIFT®.

I have been given the opportunity to ask questions about THE MAXI-LIFT® Maintenance and Safety Procedures.

I have read and understand the above statements.

EMPLOYEE NAME: \_\_\_\_\_ DATE: \_\_\_\_\_

EMPLOYEE SIGNATURE: \_\_\_\_\_

WITNESS: \_\_\_\_\_

# **DANGER**

**THIS EQUIPMENT IS CAPABLE OF REACHING A HEIGHT FROM WHICH A FALL COULD RESULT IN SERIOUS INJURY OR DEATH.**

**FOR YOUR SAFETY, VIEW THE OPERATING VIDEO. THEN READ AND UNDERSTAND ALL WARNING LABELS AND THIS INSTRUCTION MANUAL BEFORE USING THIS EQUIPMENT.**