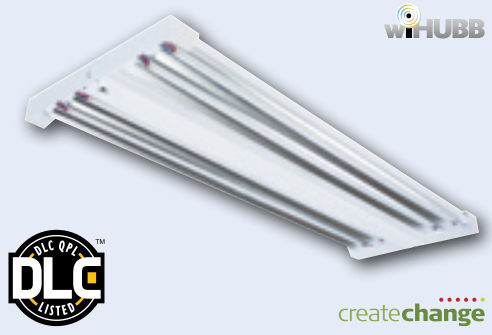


FEATURES

- Optical design provides one-for-one replacement of metal halide and fluorescent high bays with substantial energy savings
- High efficacy LEDs provide up to 119 lumens per watt
- Available in narrow or wide distribution
- Long-life, 60,000 hour LEDs at L80 (projected over 100,000 hours) for reduced life cycle maintenance costs
- Easy center driver cover allows tool-less access to electrical components for modular replaceability
- Extremely low profile—only 2" overall height
- Quick and simple hanging systems include chain, tong or aircraft cable mounting
- Tool-less access to wireway from below
- "Plug and play" occupancy sensor, daylight sensor, cord and plug
- Wire guard and/or lens option
- DesignLights Consortium® (DLC) qualified; see www.designlights.org
- CSA listed and suitable for damp locations
- Up to 45°C ambient operation
- Five year warranty (Terms & Conditions apply)



ORDERING INFORMATION

LLHV	4				ST		U	
SIZE	COLOR TEMP	REFLECTOR	UPLIGHT	VOLTAGE	OPTIONS			
4 4'	30 3000K 35 3500K 40 4000K 50 5000K	N Narrow Distribution W Wide Distribution	ST Solid Top (no uplight)	U 120V-277V				
MODEL	LUMEN OUTPUT	DRIVER						
LLHV VersaBay® LED High Bay	L Low Watt M Medium Lumen H High Lumen	E Fixed Output ED 0-10V Dimming						

ACCESSORIES (ORDER SEPARATELY)

- LHVTH** Tong Hanger (Pair)
- LHVWG4-4** Wireguard, White
- LHVQM5** Aircraft Cable, 5' (Pair)
- LHVQM10** Aircraft Cable, 10' (Pair)
- LHVSPM5** Single Point Mounting, Includes Pair of 5' Aircraft Cables
- LHVSP** Side Panels (Pair)
- LHVOS1360** Occupancy/Daylight Sensor, with a 360° lens, 120/277/347V
- LHVOS2360** Occupancy/Daylight Sensor, with a 360° lens, 120/277/347V
- C6TL15-120** Cord and Plug Kit (white), 6 ft., Twist Lock NEMA L5-15P, 15 amp, 120V
- C6TL15-277** Cord and Plug Kit (white), 6 ft., Twist Lock NEMA L7-15P, 15 amp, 277V
- C6P15-120** Cord and Plug Kit (white), 6 ft., Straight Blade NEMA 5-15P, 15 amp, 120V

- C6TL15_** 6' Cord and Twist-Lock™ Plug 15A (Add Voltage: 1=120, 2=277)
- C6TL20_** 6' Cord and Twist-Lock™ Plug 20A (Add Voltage: 1=120, 2=277)
- C6P151** 6' Cord and Straight Blade Plug 15A, 120V
- CA** Clear Acrylic Lens^{1,2}
- CP** Clear Polycarbonate Lens^{1,2}
- CAWG** Clear Acrylic Lens and Flat Wire Guard^{1,2}
- CPWG** Clear Polycarbonate Lens and Flat Wire Guard^{1,2}
- SP** Side Panels Installed^{1,3}
- WG** Flat Wire Guard¹
- ELL14** Emergency Battery Pack Installed, 1400 Lumens⁴
- FAC5** 4-Conductor Cord
- GLR** Fast Blow Fuse
- OS1360** Factory Installed Occupancy/Daylight Sensor, 1-relay, 360° lens 120/277
- OS2360** Factory Installed Occupancy/Daylight Sensor, 2-relay, 360° lens 120/277
- OS1A** Factory Installed Occupancy/Daylight Sensor, 1-relay, Aisle lens, 120/277
- OS2A** Factory Installed Occupancy/Daylight Sensor, 2-relay, Aisle lens, 120/277
- NYC** NYC Compliant
- WIH** wiHUBB Enabled^{5,6}

¹ Side panels increase height to 2 7/8".

² Lens reduces max ambient operating temperature to 40°C; if combined with ELL14 max is 30°C.

³ Side panels only; does not include lens or wire guard options.

⁴ ELL14 reduces max ambient temperature to 40°C. If combined with lens max is 30°C.

⁵ In-Fixture Module Antenna adds 2" to overall fixture height at specific location.

⁶ Not compatible if surface mounting.

PRODUCT AVAILABILITY

LUMEN PACKAGE	NOMINAL LUMENS (5000K)	NOMINAL WATTS
L	12,000	109
M	18,000	155
H	24,000	236

Lumens vary according to color temperatures and other factors. See specific photometric test(s).

