

# ALBION<sup>®</sup>

## CASTERS AND WHEELS

# Institutional Medium Duty Casters

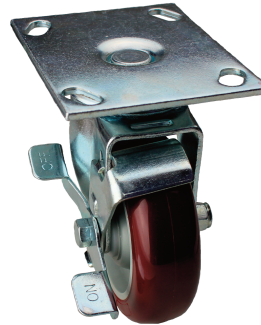
- Double Row Swivel Raceways
- 3/8" Diameter Nut & Bolt Axle
- Heat Treated and Factory Lubricated Raceways

### Applications:

Hospital Equipment, Utility Carts, Store Fixtures, Office Equipment, Hotel Equipment, Institutional Equipment, Food Service Racks and Cases, Stock Carts, Laundry Trucks



TPR Rubber Wheel Swivel



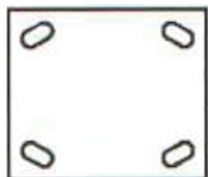
Polyurethane Wheel Swivel w/Brake



Soft Rubber Wheel Rigid

Matches Up With the ER Wagner Americaster Series

Wheel Dia. (In.)	Tread Width (In.)	Load Rating (Lb.)	Wheel Bearing	Overall Height (In.)	Caster Finish	Swivel Part Number	Swivel W/Brake Part Number	Rigid Part Number
<b>Soft Rubber Wheel (Precision Ball Bearing)</b>								
4	1-1/4	200	Ball	5-3/16	Zinc	02RR04128S002	02RR04028SFPQ	02RR04128R001
5	1-1/4	240	Ball	6-3/16	Zinc	02RR05128S002	02RR05128S001	02RR05128R001
6	1-1/4	280	Ball	7-3/8	Zinc	02RR06128S002	02RR06128S001	02RR06128R001
<b>Thermoplastic Rubber Wheel (Precision Ball Bearing)</b>								
4	1-1/2	275	Ball	5-3/16	Zinc	02XS04128S002	02XS04128S001	02XS04128R001
5	1-1/2	300	Ball	6-3/16	Zinc	02XS05128S004	02XS05128S003	02XS05128R001
6	1-1/2	300	Ball	7-3/8	Zinc	02XS06128S002	02XS06128S001	02XS06128R001
<b>Polyurethane Wheel (Precision Ball Bearing)</b>								
4	1-1/2	375	Ball	5-3/16	Zinc	02XA04128S002	02XA04128S001	02XA04128R001
5	1-1/2	450	Ball	6-3/16	Zinc	02XA05128S002	02XA05128S001	02XA05128R001
6	1-1/2	450	Ball	7-3/8	Zinc	02XA06128S002	02XA06128S001	02XA06128R001
<b>Polyolefin Wheel (Precision Ball Bearing)</b>								
4	1-1/4	375	Ball	5-3/16	Zinc	02PB04128S003	02PB04128S002	02PB04128R002
5	1-1/4	450	Ball	6-3/16	Zinc	02PB05128S004	02PB05128S003	02PB05128R002
6	1-1/4	450	Ball	7-3/8	Zinc	02PB06128S002	02PB06128S001	02PB06128R001
<b>Phenolic Wheel (Roller Bearing)</b>								
3	1-1/2	350	Roller	4-3/8	Zinc	02TM03101S002	02TM03101S001	02TM03101R001
4	1-1/2	450	Roller	5-3/16	Zinc	02TM04101S002	02TM04101S001	02TM04101R001
5	1-1/2	450	Roller	6-3/16	Zinc	02TM05101S003	02TM05101S002	02TM05101R001
6	1-1/2	450	Roller	7-3/8	Zinc	02TM06101S002	02TM06101SFPQ	02TM06101R001
<b>Cast Iron Wheel (Roller Bearing)</b>								
3	1-1/2	450	Roller	4-3/8	Zinc	02CA03101S001	NA	02CA03101R001
4	1-1/2	450	Roller	5-3/16	Zinc	02CA04101S002	NA	02CA04101R001



**Overall Size:** 3-3/4" x 4-5/8"  
**Hole Soacing:** 2-5/8" x 3-5/8"  
 slotted to 3" x 3"  
**Bolt Dia.:** 5/16"

