

BRAKE GUIDE

For 2" Wide Wheels



FBA

PART NUMBER	WHEEL SIZE
-------------	------------

FB140400	4"
FB140500	5"
FB140600	6"
FB140800	8"

Used on: 12, 14, 15, 16 series

Add FBA to end of part number for factory orders



FBB

PART NUMBER	BRAKE ARM ANGLE	WHEEL SIZE
-------------	-----------------	------------

WK040202WA	55°	4"
WK050202WA	55°	5"
WK060202WA	55°	6"
WK080202W	75°	8"

Used on: 11, 12, 14, 16, 18, 60, 61, 62, 71, 72, 100, 110, 170 series

Add FBB to end of part number for factory orders



Cam Brakes

Available on 06, 11, 12, 15, 16, 18, 60, 61, 62, 71, 72, 100, 110 and 170 series

WK405101 Long pedal

WK405104 Short pedal

Works on swivel or rigid casters

Available on E5 and 05 series (stainless steel)

WK405200 Short pedal ss

WK405201 Long pedal ss

Works only on swivel casters

Can be used with roller, delrin, and oillex bearings

Add CB to end of part number for factory orders

Note: 05 model shown in photo - may appear different on other series

*Please note: Not all brake / bearing combinations will work – please consult factory



FBC

PART NUMBER	WHEEL SIZE
-------------	------------

FB180400	4"
FB180500	5"
FB180600	6"
FB180800	8"

Used on: 18, 100, 110, and 170 series

Add FBC to end of part number for factory orders



FBD

PART NUMBER	WHEEL SIZE
-------------	------------

FB050400	4"
FB050500	5"
FB050600	6"
FB050800	8"

Used on: 05 series

FB120400	4"
FB120500	5"
FB120600	6"
FB120800	8"

Used on: E5, 120, and 130 series

FB12000 includes rubber pad on brake arm

Add FBD to end of part number for factory orders



FBE

PART NUMBER	WHEEL SIZE
-------------	------------

FB160400	4"
FB160500	5"
FB160600	6"
FB160800	8"

Used on: 06, 11, 12, 14, 15, 16, 18, 60, 61, 62, 71, 100, 110, 170 series

Add FBE to end of part number for factory orders

Works on 6" and 8" rigid casters



FBF

PART NUMBER	WHEEL SIZE
-------------	------------

WKE50400	4"
WKE50500	5"
WKE50600	6"
WKE50800	8"

Used on: E5 series

Works on swivel and rigid casters

Add FBF to end of part number for factory orders



FBG

PART NUMBER	WHEEL SIZE
-------------	------------

WK1200400	4"
WK1200500	5"
WK1200600	6"
WK1200800	8"

Used on: E5, 120, and 130 series

Stainless steel

Works on 6" and 8" rigid casters

Add FBG to end of part number for factory orders



WK110X01

PART NUMBER	WHEEL SIZE
-------------	------------

WK110401	4"
WK110501	5"
WK110601	6"
WK110801	8"

Used on: 11 series only

Works on swivel and rigid casters

Add B to end of part number for factory orders



Total Lock Brakes

PART NUMBER	WHEEL SIZE
-------------	------------

TL160400	4"
TL160500	5"
TL160600	6"
TL160800	8"

Used on: 16 series (6" rig requires 7-1/2" HS60 option)

Add T to end of part number for factory orders



*Please note: Not all brake / bearing combinations will work – please consult factory

Grip Lock Brakes

PART NUMBER	WHEEL SIZE
-------------	------------

GL160400	4"
GL160500	5"
GL160600	6"
GL160800	8"

Used on: 16 series

Add GL to end of part number for factory orders



FACTORY INSTALLED BRAKES

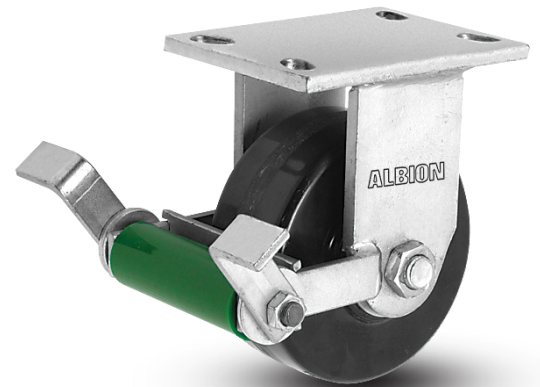
Face Contact Brake

Available on all swivel and rigid casters, except stainless and spring loaded. Turn lever to apply shoe against wheel tread for positive locking action. Add F to end of part number for factory orders.



Poly Cam Brakes

Available on all swivel and rigid casters except stainless steel, and spring loaded. Add P to end of the part number for factory orders.



Single Side Brake

Available on all swivel and rigid casters, except stainless. Right hand installation standard, left hand option available. Add SSB to end of part number for factory orders.

Double Side Brake

Same as above. Add DSB to end of part number for factory orders.



About Albion

Since its founding in 1947, Albion has evolved into The Caster Experts and one of the most recognized names in the material handling industry. That's because we do more than just sell wheels and casters. We deliver custom-engineered, reliable solutions for the most challenging material handling problems.

As a world leader in the design and production of industrial and institutional wheels and casters, our growth is built on the challenges nobody else will take. Many custom-designed casters have become industry standards. And experienced engineers equipped with the latest design and manufacturing technology create casters that deliver optimal performance for virtually every application, load size, work environment and budget.

You will select Albion casters with confidence through our highly-trained and responsive distributor network. As a member of Colson Associates, Inc., a worldwide business that includes plastics, hardware and medical products, you can be sure we will have the resources and staying power to service and supply your needs for at least another 60 years.



ALBION®

CASTERS AND WHEELS