

ALBION®

CASTERS AND WHEELS

Medium Duty Casters

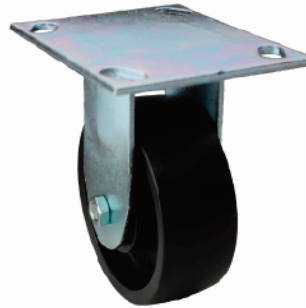
- Double Row Swivel Raceways
- 3/8" Diameter Nut & Bolt Axle
- Heat Treated and Factory Lubricated Raceways

Applications:

Hotel Equipment, Institutional Equipment, Food Service Racks and Cases, Stock Carts, Laundry Trucks, And Any Application Where The Wheel Could Bind Up With Debris



Soft Rubber Wheel Swivel w/Brake



Polyolefin Wheel Rigid



Hard Rubber Wheel Swivel w/Thread Guard

Matches Up With the ER Wagner 200 Series

Wheel Dia. (In.)	Tread Width (In.)	Load Rating (Lb.)	Wheel Bearing	Overall Height (In.)	Caster Finish	Plate Type Number	Swivel Part Number	Swivel W/Brake Part Number	Rigid Part Number
Soft Rubber Wheel (Delrin Bearing)									
4	1-1/4	200	Delrin	5-1/8	Zinc	A	DCRR04052S001	DCRR04052S002	DCRR04052R001
5	1-1/4	240	Delrin	6-1/8	Zinc	A	DCRR05052S002	DCRR05052S001	DCRR05052R001
6	1-1/4	280	Delrin	7-3/8	Zinc	A	DCRR06052S003	DCRR06052S002	DCRR06052R001
Polyolefin Wheel (Plain Bearing)									
4	1-1/4	300	Plain	5-1/8	Zinc	A	DCIB04041S004	DCIB04041S006	DCIB04041R001
5	1-1/4	350	Plain	6-1/8	Zinc	A	DCIB05041S012	DCIB05041S014	DCIB05041R001
6	1-1/4	400	Plain	7-3/8	Zinc	A	DCIB06041S002	DCIB06052S001	DCIB06041R002
Polyolefin Wheel (Precision Ball Bearing)									
4	1-1/4	300	Ball	5-1/8	Zinc	B	DCIB04028S005	DCIB04028S001	DCIB04028R002
5	1-1/4	350	Ball	6-1/8	Zinc	B	DCIB05028S013	DCIB05028S001	DCIB05028R002
6	1-1/4	400	Ball	7-3/8	Zinc	B	DCIB06031S001	DCIB06031S002	DCIB06028R001
High Temperature Phenolic Wheel (Roller Bearing)									
4	1-1/4	375	Roller	5-1/8	Zinc	A	DCTR04101S001	DCTR04001S001	DCTR04101R001

THREAD GUARDS

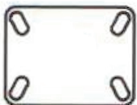
Soft Rubber Wheel (Delrin Bearing)

4	1-1/4	200	Delrin	5-1/8	Zinc	A	DCRR04052S003	NA	DCRR04052R002
5	1-1/4	240	Delrin	6-1/8	Zinc	A	DCRR05052S003	NA	DCRR05052R002
6	1-1/4	280	Delrin	7-3/8	Zinc	A	DCRR06052S004	NA	DCRR06052R002

Hard Rubber Wheel (Delrin Bearing)

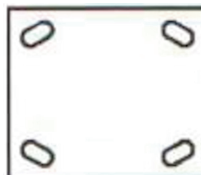
4	1-1/4	300	Delrin	5-1/8	Zinc	A	DCRN04052S001	NA	DCRN04052R001
5	1-1/4	350	Delrin	6-1/8	Zinc	A	DCRN05052S001	NA	DCRN05052R001
6	1-1/4	400	Delrin	7-3/8	Zinc	A	DCRN06052S001	NA	DCRN06052R001

A Plate



Overall Size: 3-1/8" x 4-1/8"
Hole Soacing: 1-3/4" x 3 slotted to 2-3/8" x 3-3/8"
Bolt Dia.: 5/16"

B Plate



Overall Size: 3-3/4" x 4-5/8"
Hole Soacing: 2-5/8" x 3-5/8" slotted to 3" x 3"
Bolt Dia.: 5/16"