

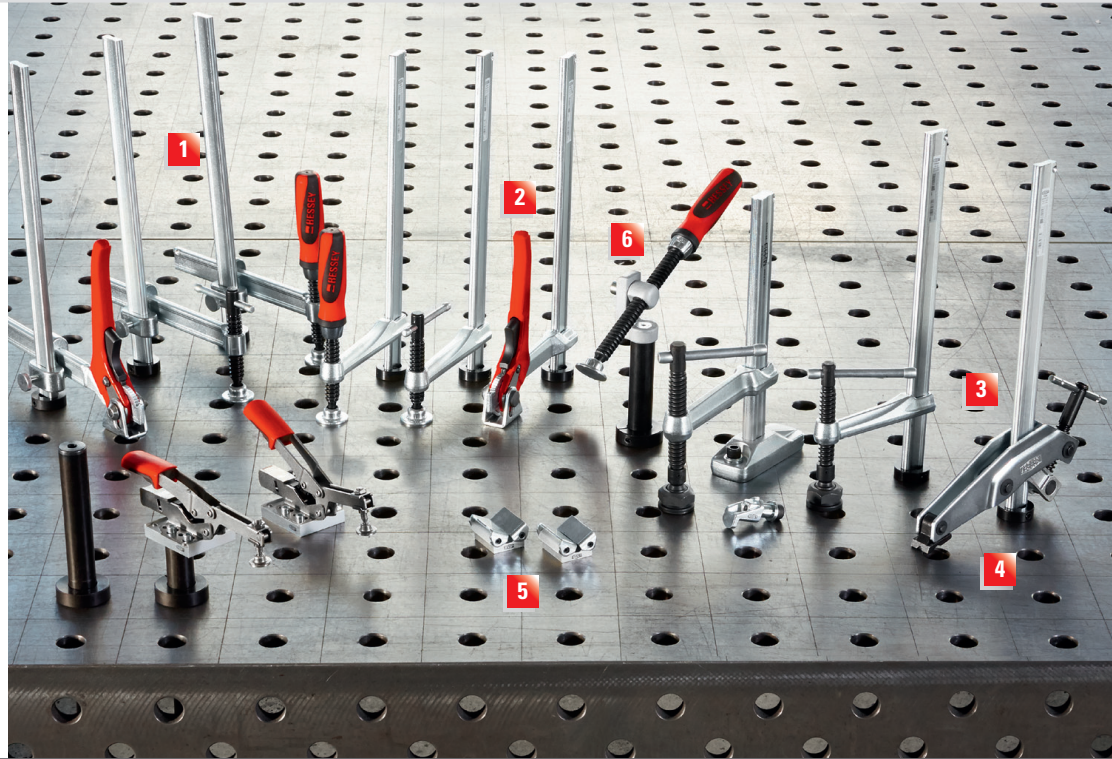
# Welding table clamps



Simply better.

## Features & Benefits

- 1 Welding Clamp (TWW)**  
Variable throat depth, 3 handle styles and up to 12" capacity. Made in Germany.
- 2 Welding Clamp (TW)**  
Fixed throat depth, 3 handle styles, and 3 throat depth variants. Made in Germany.
- 3 Welding Clamp (TWM28)**  
T-Bar handle and 12" capacity. Heavy duty pad tilts up to 35°. Made in Germany.
- 4 Welding Clamp (TWGRS)**  
Cantilevered jaw and 12" capacity. Made in Germany.
- 5 Welding Table Clamping Accessories**  
For toggle clamp usage and attachment of other BESSEY® clamps, on welding tables with 16 mm and 28 mm matrix patterns.
- 6. Diagonal & horizontal clamping**  
Tilting adapter TW28AV used with TW28X allows angled or horizontal clamping from -52° to +52°.



### A. Welding table clamp, variable throat depth (TWW)

Variable height and adjustable throat depth.



	Handle Style	Hole Diameter	Clamping Capacity	Nominal Throat Depth	Rail Profile	Clamping Force	Approx. Weight
<b>TWW16-20-15-2K</b>	Composite	16 mm	8"	1 3/16" - 6"	3/8" - 3/8"	550 lbs	2.64 lbs
<b>TWW16-20-15K</b>	T-Bar	16 mm	8"	1 3/16" - 6"	3/8" - 3/8"	550 lbs	2.29 lbs
<b>TWW16-20-15H</b>	Lever	16 mm	8"	2 3/16" - 6"	3/8" - 3/8"	550 lbs	2.66 lbs
<b>TWW28-30-17-2K</b>	Composite	28 mm	12"	1 3/16" - 6 7/16"	1 1/8" - 7/16"	1200 lbs	4.89 lbs
<b>TWW28-30-17K</b>	T-Bar	28 mm	12"	1 3/16" - 6 7/16"	1 1/8" - 7/16"	1200 lbs	4.65 lbs
<b>TWW28-30-17H</b>	Lever	28 mm	12"	4 3/16" - 6 7/16"	1 1/8" - 7/16"	1200 lbs	5.47 lbs



### B. Welding table clamp, fixed throat depth (TW)

Variable height and fixed throat depth.



<b>TW16-20-10-2K</b>	Composite	16 mm	8"	4"	3/8" - 3/8"	650 lbs	2.05 lbs
<b>TW16-20-10K</b>	T-Bar	16 mm	8"	4"	3/8" - 3/8"	650 lbs	1.89 lbs
<b>TW16-20-10H</b>	Lever	16 mm	8"	4"	3/8" - 3/8"	650 lbs	2.22 lbs
<b>TW28-30-12-2K</b>	Composite	28 mm	12"	4 3/4"	1 1/8" - 7/16"	1000 lbs	3.70 lbs
<b>TW28-30-12K</b>	Composite	28 mm	12"	5 1/2"	1 1/8" - 7/16"	1100 lbs	3.75 lbs
<b>TW28-30-12K</b>	T-Bar	28 mm	12"	4 3/4"	1 1/8" - 7/16"	1000 lbs	3.57 lbs
<b>TW28-30-14K</b>	T-Bar	28 mm	12"	5 1/2"	1 1/8" - 7/16"	1100 lbs	3.64 lbs
<b>TW28-30-12H</b>	Lever	28 mm	12"	4 3/4"	1 1/8" - 7/16"	1000 lbs	4.56 lbs
<b>TW28-30-14H</b>	Lever	28 mm	12"	5 1/2"	1 1/8" - 7/16"	1100 lbs	4.63 lbs



Note: Clamping force calculated at a height of 2-3 In on a solid all steel welding table platform



# Welding table clamps



Simply better.

## Clamping elements for welding tables

### Welding table clamp (TW28)

- Tempered profiled rail and drop forged sliding arm for strength.
- Tempered spindle – particularly sturdy and wear-resistant.
- Long life due to heat-resistant pressure plate with sintered steel insert, which can be tilted up to 35°.

	Hole Diameter	Clamping Capacity	Nominal Throat Depth	Rail Profile	Clamping Force	Approx. Weight
TW28-30-12	28mm	12"	4 3/4"	1 3/32" - 7/16"	1400 lbs.	3.92 lbs.

Note: Clamping force calculated at a height of 2-3 In on a solid all steel welding table platform



### Welding table clamp (TW28GRS)

- The spindle is located on the outside for free access to the work area and to protect against welding spatter.
- Special, sturdy V-grooved pressure plate, ideal even for clamping round or square workpieces.
- Particularly suited to clamping with the tightest of space constraints, in narrow openings as well as for short projections.

	Hole Diameter	Clamping Capacity	Nominal Throat Depth	Rail Profile	Clamping Force	Approx. Weight
TW28GRS30-12	28mm	12"	4 3/4"	1 3/32" - 7/16"	1100 lbs.	4.92 lbs.

Note: Clamping force calculated at a height of 2-3 In on a solid all steel welding table platform



### TWVAD

- Specifically adapted to round, oval and square workpieces.
- Angle infinitely adjustable from 60° internal to 60° external.
- TW16VAD / TW28VAD version with bolt for table mounting.
- TWVAD version without bolt for variable movement on the welding table.
- 2 pieces per bag



	Hole Diameter	Angle	Jaw Face Width	Approx. Weight
TW16VAD	16 mm	from 60° inner to 60° outer	1 13/16"	0.84 lbs
TW28VAD	28mm	from 60° inner to 60° outer	1 13/16"	1.26 lbs.
TWVAD	–	from 60° inner to 60° outer	1 13/16"	0.62 lbs.

NEW

### Welding table clamp tilting adapter (TW28AV)

- Accessory for BESSEY® extension TW28X.
- Pivoting spindles with stepless adjustment from -52° to +52°.
- Lockable trapezoidal nut for secure fastening of the workpiece.
- High quality, 2-component plastic grip with 6 7/8" long spindle.

	Hole Diameter	Max Clamping Height	Suitable for	Approx. Weight
TW28AV	28 mm	6 5/16"	TW28X	2.25 lbs

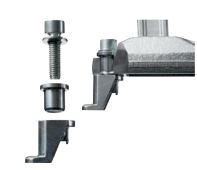


NEW

### Welding table clamp attachment (TW28HO)

- Accessory for BESSEY® work table clamp.
- Use on matrix welding tables by simply screwing it to the work table clamp.

	Hole Diameter	Suitable for	Approx. Weight
TW28HO	28 mm	BAS-C / BAS-CB / BASO / BSN / GRS / BSG	0.31 lbs.



### Welding table clamp extension (TWX)

- Accessory for BESSEY® toggle clamp adapter TW28A-STC and TWVAD.
- Use with TWVAD – requires an 8 x 40 mm flat head screw.
- Height adjustable.



	Hole Diameter	Suitable for	Adjusting Range	Approx. Weight
TW16X	16 mm	TW16A-STC / TW16VAD / TWVAD	5/8" - 7 7/8"	0.90 lbs
TW28X	28 mm	TW28A-STC / TW28VAD / TWVAD	5/8" - 11 13/16"	3.88 lbs

NEW

### Welding table clamp adaptor (TWA-STC)

- For BESSEY® STC toggle clamp with horizontal base plate.
- With bolt – for use directly on the welding table.
- Without bolt – for screwing to the extension TWX.

	Hole Diameter	Suitable for	Approx. Weight
TW16A-STC	16 mm	STC-VH / STC-HH / STC-IHH	0.42 lbs
TW28A-STC	28 mm		0.62 lbs



NEW

### BESSEY® clamp service part, MorPads

- 3100736 Smooth face - Standard
- 3101192 Rough face
- 3101193 V Groove

