

3M Reusable Escape Only Mouthpiece Respirator 5500 Series

User Instructions for:

3M™ Reusable Escape Only Mouthpiece Respirator Assembly 5502, Acid Gas;

3M™ Reusable Escape Only Mouthpiece Respirator Assembly 5512, Acid Gas/N95;

3M™ Escape Only Cartridge 5002, Acid Gas;

3M™ Escape Only Cartridge/Filter 5012, Acid Gas/N95

IMPORTANT: Before use, the wearer must read and understand these *User Instructions*. Keep these *User Instructions* for reference.



⚠️ WARNING

This product helps protect against certain airborne contaminants. **Misuse may result in sickness or death.** For proper use, see supervisor, *User Instructions* or call 3M in U.S.A., 1-800-243-4630. In Canada, call Technical Service at 1-800-267-4414.

List of Warnings within these *User Instructions*

WARNING

1. This product helps protect against certain airborne contaminants. **Misuse may result in sickness or death.** For proper use, see supervisor, *User Instructions* or call 3M in U.S.A., 1-800-243-4630. In Canada, call Technical Service at 1-800-267-4414.
2. This product contains natural rubber latex which may cause allergic reactions.
3. Failure to follow all instructions and limitations on the use of this respirator and/or failure to wear this respirator during all times of exposure can reduce respirator effectiveness and **may result in sickness or death.**
4. Do not use this respirator if missing teeth or dentures prevent a seal of the respirator's mouthpiece, or if nose shape or size prevents the nose clip from properly sealing the nostrils. This respirator must always be used with the nose clip firmly in place to prevent accidental inhalation of contaminant through the nose.
5. Discard respirator if any non-replaceable component is defective. **A defective respirator may provide little or no protection if used during an emergency escape.**
6. **Do not clean with solvents.** Cleaning with solvents may degrade some respirator components and reduce respirator effectiveness. Inspect all respirator components before each use to ensure proper operating condition. **Failure to do so may result in sickness or death.**

WARNING

This product contains natural rubber latex which may cause allergic reactions.

USE INSTRUCTIONS & LIMITATIONS

Intended Use

3M™ Reusable Escape Only Mouthpiece Respirators 5500 Series (5502 and 5512) are designed to help provide respiratory protection for emergency escape from atmospheres which suddenly become contaminated with the substances for which the respirators are NIOSH approved. The 5502 and 5512 Assemblies are approved for atmospheres containing certain amounts of acid gases including: chlorine, hydrogen chloride, sulfur dioxide, chlorine dioxide and hydrogen sulfide. In addition to these acid gases, the 5512 Assembly has an N95 class filter for certain non oil-based aerosols. These respirators must be used in accordance with all use instructions, NIOSH approvals, OSHA limitations, in Canada CSA standard Z94.4 requirements and other applicable regulations. Before occupational use of this respirator, a written respiratory protection program must be implemented meeting the requirements of OSHA 29 CFR 1910.134. In Canada, CSA standard Z94.4 requirements must be met.

WARNING

Failure to follow all instructions and limitations on the use of this respirator and/or failure to wear this respirator during all times of exposure can reduce respirator effectiveness and **may result in sickness or death.**

Limitations of Use

1. Do not use this respirator for entry into contaminated atmospheres.
2. This respirator will not be effective for escape from atmospheres:
 - that are oxygen deficient, or
 - where contaminant concentrations are immediately dangerous to life or health (IDLH), or
 - that contain unknown contaminants
2. Do not alter abuse or misuse this respirator.
3. The N95 filter on the 5512 Assembly and on the 5012 cartridge is restricted to use in atmospheres free of oil aerosols.

NIOSH Cautions and Limitations

The following restrictions may apply. See NIOSH approval label included with the Respirator Assembly and replacement cartridges.

- A- Not for use in atmospheres containing less than 19.5 percent oxygen.
- B- Not for use in atmospheres immediately dangerous to life or health.
- J- Failure to properly use and maintain this product could result in injury or death.
- L- Follow the manufacturer's *User's Instructions* for changing cartridges, canister and/or filters.
- M- All approved respirators shall be selected, fitted, used, and maintained in accordance with MSHA, OSHA, and other applicable regulations.
- N- Never substitute, modify, add, or omit parts. Use only exact replacement parts in the configuration as specified by the manufacturer.
- O- Refer to *User's Instructions*, and/or maintenance manuals for information on use and maintenance of these respirators.
- P- NIOSH does not evaluate respirators for use as surgical masks.
- AA- This respirator is to be used for escape only and will protect against the inhalation of certain respiratory hazards.
- BB- Not for use for entry into atmospheres immediately dangerous to life or health.
- LL- This respirator contains filter or cartridge components that are not approved for all protections in all configurations. Check the specific row on the NIOSH approval label to ensure proper use.

Upon Receiving this Respirator

The 5502 and 5512 Respirator Assemblies are packaged in resealable clear bags. These products should remain unopened in this original packaging, away from contaminated areas, until the products are ready to be placed in service. Prior to carrying into the work environment, the products should be inspected according to the inspection procedure stated in these *User Instructions*. Once the respirator assembly has been inspected and is in good working condition, it should be returned to the clear storage bag and zipper sealed before carried into the work environment. Immediately record the "In Service Date" as described in the Storage Conditions & Shelf Life Section of these *User Instructions*.

Carrying the Respirator

When 5500 Series Respirators are carried into the work environment, but are not being used for emergency escape, they should remain sealed in the clear storage bag to prevent contamination by airborne contaminants.

Instructions for Use During Escape

1. Open the resealable respirator clear storage bag and remove the respirator.

2. Place mouthpiece into mouth and bite down on mouthpiece tabs firmly while closing mouth and lips around the mouthpiece to prevent air leakage. Reposition mouthpiece if necessary.
3. Place nose clip on nose completely closing off nostrils. You should not be able to breathe through your nose. Reposition if necessary. Fig. 1 shows proper donning of a 3M™ 5500 Series Respirator.
4. While leaving the contaminated area, **BREATH ONLY THROUGH YOUR MOUTH.**
5. Do not remove mouthpiece or nose clip until you are in a safe, uncontaminated atmosphere.
6. **DO NOT REUSE THE CARTRIDGE.** Discard it in a safe manner consistent with good industrial hygiene practice and local, state and federal guidelines.

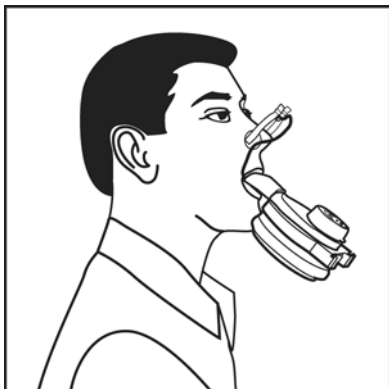


Fig. 1

CAUTION

Failure to properly dispose of used cartridges or respirators contaminated by hazardous materials can result in environmental harm. Handling, transportation and disposal of used cartridges or respirators must comply with all local regulations.

⚠ WARNING

Do not use this respirator if missing teeth or dentures prevent a seal of the respirator's mouthpiece, or if nose shape or size prevents the nose clip from properly sealing the nostrils. This respirator must always be used with the nose clip firmly in place to prevent accidental inhalation of contaminant through the nose.

Products, Replacement Parts and Accessories

3M™ Reusable Escape Only Mouthpiece Respirator, 5500 Series

Part Number	Description
5502	Reusable Escape Only Mouthpiece Respirator Assembly, Acid Gas
5512	Reusable Escape Only Mouthpiece Respirator Assembly, Acid Gas/N95

Respirator Components and Replacement Parts* (Refer to Fig. 2)

Item Number	Part Number	Description
1	5002	Escape Only Cartridge, Acid Gas
2	5012	Escape Only Cartridge, Acid Gas/N95
3		Rubber Gasket
4		Cartridge Retainer
5	510E	Escape Only Mouthpiece and Nose Clip
6		Exhalation Valve
7		Exhalation Valve Seat
8		Exhalation Valve Stem
9		Escape Only Valve Cover
3 - 9		Respirator Housing

* Items with a part number indicate available replacement parts

Accessories

Part Number	Description
513E	Resealable, Clear, Respirator Storage Bag

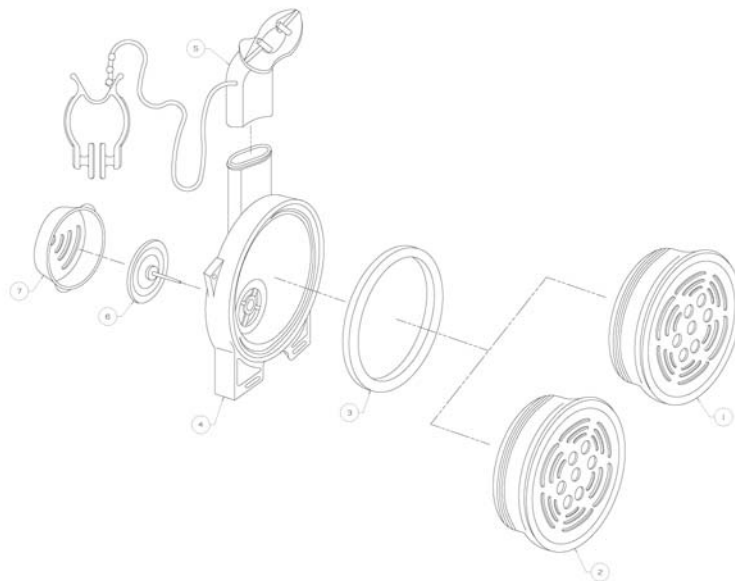


Fig. 2 (Respirator Components and Replacement Parts)

INSPECTION, CLEANING AND STORAGE

Inspection Procedure

The 5500 Series Respirator is intended to be carried into the workplace for personal use in an emergency. In the United States, according to OSHA, emergency use respirators must be inspected for proper condition prior to being carried into the workplace. In Canada consult the authority having jurisdiction in your region and/or CSA Z94.4. Any damaged or defective parts must be replaced before use. The following visual inspection procedure is recommended, and can be conducted by either removing the respirator from the bag to perform the inspection or by inspecting the respirator in its clear storage bag. If the respirator is removed from the bag for inspection purposes, it should be returned to the clear storage bag and bag zipper sealed before being carried into the work environment. Once the clear storage bag for the respirator has been opened for the first time, immediately record the “In Service Date” as described in the Storage Conditions & Shelf Life Section of these User Instructions.

Visually check:

1. That the respirator clear storage bag is not damaged due to tears rips or punctures. If damage to the bag is found, replace the bag immediately.
2. That the nose clip is not damaged and both nose pads are in place. Ensure that the nose clip is in a closed position with nose pads nearly touching (refer to Fig. 2).
3. That the mouthpiece is intact and is not distorted.
4. That the exhalation valve and exhalation valve cover are in place and not damaged.
5. That the tether is intact and connects the nose clip to the mouthpiece.
6. That the cartridge is secure in place and cartridge housing is not damaged.
7. That the respirator itself is not damaged in any way.

WARNING

Discard respirator if any non-replaceable component is defective. **A defective respirator may provide little or no protection if used during an emergency escape.**

Cleaning and Storage

Clean Respirator Housing after each use (Refer to Fig. 2 and Respirator Components and Replacement Parts section.)

WARNING

Do not clean with solvents. Cleaning with solvents may degrade some respirator components and reduce respirator effectiveness. Inspect all respirator components before each use to ensure proper operating condition. **Failure to do so may result in sickness or death.**

1. Remove cartridge.
2. Remove rubber gasket and exhalation valve and clean separately. Immerse in a warm (maximum 120°F or 49°C) solution of mild detergent and water. Rinse in fresh, clean potable water.

WARNING

WARNING: This product contains natural rubber latex which may cause allergic reactions.

3. Clean respirator housing (excluding cartridge), with 3M™ 504 Respirator Wipes or by immersing in a warm (maximum 120°F or 49°C) solution of mild detergent and water. Rinse in clean potable water.

Respirator Wipes should not be used as the only method of cleaning. Do not use cleaners containing lanolin or other oils.

4. Scrub the respirator housing with a soft cloth or soft brush until clean.
5. If needed, disinfect respirator housing (excluding cartridge) by soaking in a solution of quaternary ammonia disinfectant or sodium hypochlorite (1 oz. [30 ML] household bleach in 2 gallons [7.5 L] of water), or other disinfectant.
6. Rinse respirator housing in fresh, clean potable, warm water and air dry in non-contaminated atmosphere.
7. When assembling the respirator, visually inspect all components as described in the Inspection Procedure section of these *User Instructions*.
8. The clean and dry respirator should be stored in a clean and dry environment in its original clear storage bag or 3M replacement clear storage bag and zipper sealed when not in use. Store bag in a secure way to prevent tears, punctures or other damage.

STORAGE CONDITIONS & SHELF LIFE

The 5502 or 5512 Respirator Assembly can be stored in two different conditions. They are:

1. **STORAGE** - In the primary box and in the original clear storage bag, unopened in a storage area out of the work environment.
2. **IN SERVICE** – Out of the primary box, in the original clear storage or a 3M replacement clear storage bag, and the bag has been opened for inspection or cartridge replacement. The **IN SERVICE** respirator is often carried by the employee ready to be used.

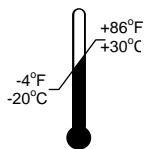
An unopened 5502 or 5512 Respirator Assembly or 5002 or 5012 Respirator Cartridge in STORAGE condition should be used within 5 years of manufacture. The shelf life is represented by the “use by” date printed on the respirator assembly or replacement cartridge primary box packaging. Once the respirator or replacement cartridge is taken out of storage and put IN SERVICE condition, it must be used or discarded within 1 year or earlier if the 5 year “use by” date has been reached. As soon as the respirator is put IN SERVICE condition, the “In Service Date” should be immediately recorded on the cartridge.

When kept in STORAGE condition in accordance with temperature and humidity conditions specified below, the product may be used until the “use by” date specified on packaging. Respirator may not perform as stated for the full shelf life of the product and to the “use by” date printed on the package if not stored in accordance with the storage conditions specified below. When placed IN SERVICE condition, the product should be maintained as close as possible to the temperature and humidity conditions specified below. Always inspect product as specified in these *User Instructions*.



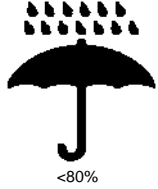
End of Shelf Life

Use respirators before the “use by” date specified on packaging



Storage Temperature Range

-20°C (-4°F) to +30°C (+86°F).



Storage Maximum Relative Humidity

<80% RH

REPLACEMENT INSTRUCTIONS

Mouthpiece and Nose Clip Part Replacement (See Fig. 2 as reference for mouthpiece replacement)

If the mouthpiece and nose clip part becomes damaged or cannot be cleaned, it must be replaced.

1. Remove mouthpiece by holding body of respirator with one hand and pulling the mouthpiece side to side with the other hand until it is removed.
2. Push the replacement mouthpiece back onto the neck of the respirator body in the same orientation as the original mouthpiece (angled toward cartridges and away from exhalation valve).
3. Do not use any type of lubricant to position replacement mouthpiece.
4. Insert respirator into original or 3M replacement clear storage bag and reseal zipper.

Cartridge Replacement (See Fig. 2 as reference for cartridge replacement)

If the cartridge is used in an escape event or if it becomes damaged, it must be replaced.

The cartridge should be replaced only while the respirator wearer is in an uncontaminated atmosphere. The following instructions apply to replacing the cartridge:

1. Unscrew the cartridge from the cartridge retainer and discard the used cartridge.
2. Clean the respirator housing according to the Cleaning and Storage section of this user instruction.
3. Check to insure that the respirator housing contains a properly positioned rubber gasket in the cartridge retainer and that the gasket is not cut or cracked.
4. Screw the cartridge into the cartridge retainer, so that the sealing rim on the base of the cartridge is sealed tightly against the rubber gasket.
5. Insert respirator into original or 3M replacement clear storage bag and reseal zipper.

FOR MORE INFORMATION

In United States, contact:

Website: www.3M.com/OccSafety

Technical Assistance: 1-800-243-4630

For other 3M products:

1-800-3M-HELPS or 1-651-737-6501

3M Occupational Health and Environmental Safety Division

3M Center, Building 0235-02-W-70

St. Paul, MN 55144-1000

Printed in U.S.A.

©3M 2011. All rights reserved.

3M is a trademark of 3M Company, used under license in Canada.

98-0060-0173-3/2

Insert NOISH Labels Here at End of
Document should be three