



SCREENFLEX
Commercial Edition
Portable Room Dividers

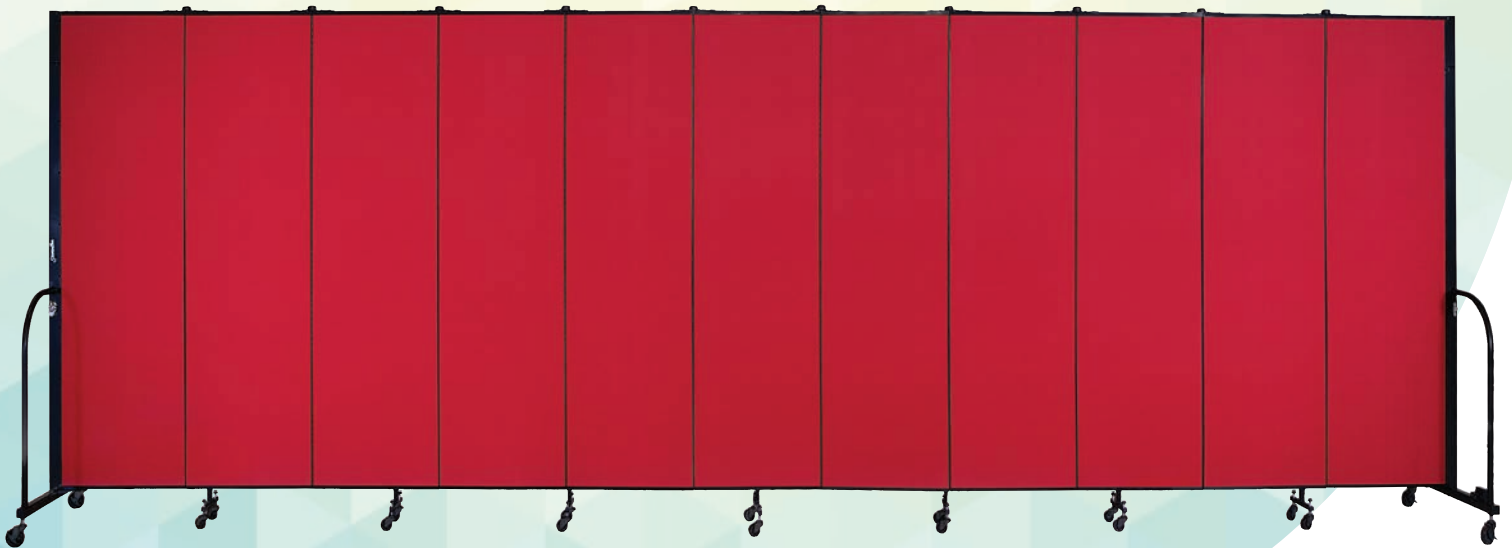
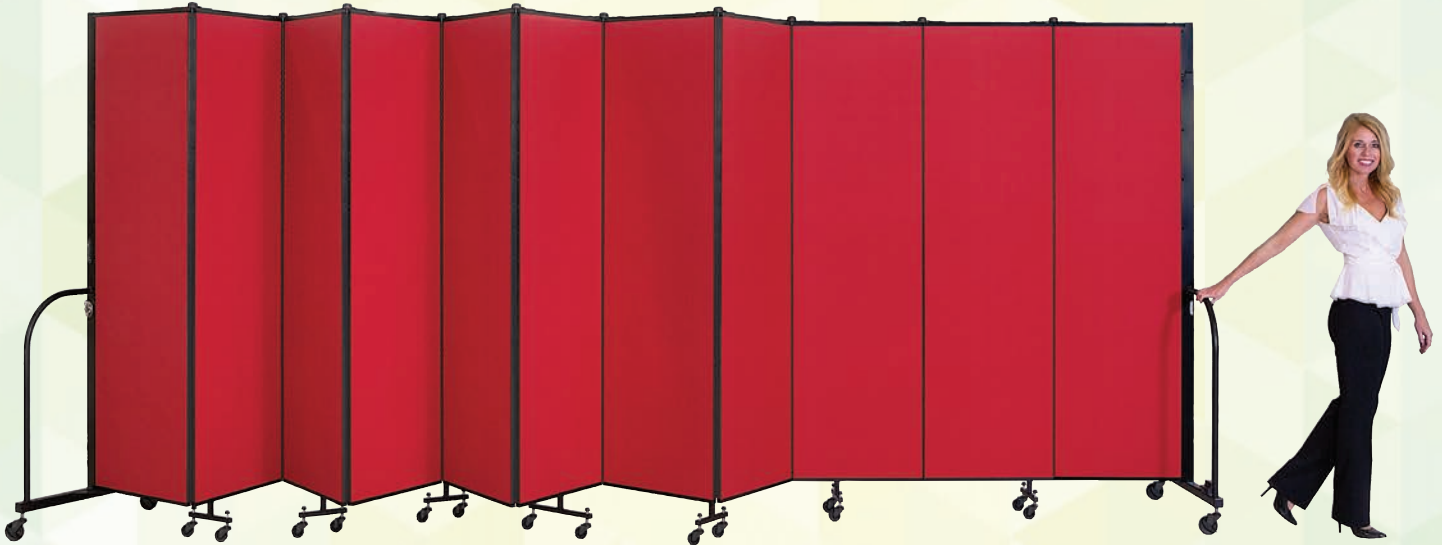


Screenflex Room Dividers

Commercial Edition

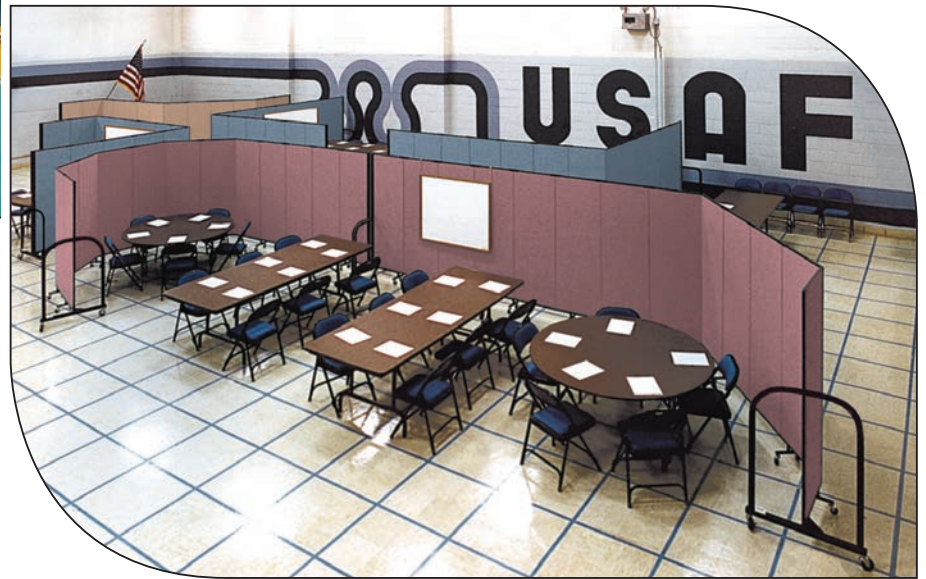


"One word, 'Phenomenal', Thanks!"
Facility Manager, Scottsdale, AZ





Schools



Government

LIFETIME WARRANTY!



Most floors are not perfectly level. Self leveling casters ensure that every wheel makes full contact, providing unparalleled support and stability! Please visit cedividers.com for complete specifications.

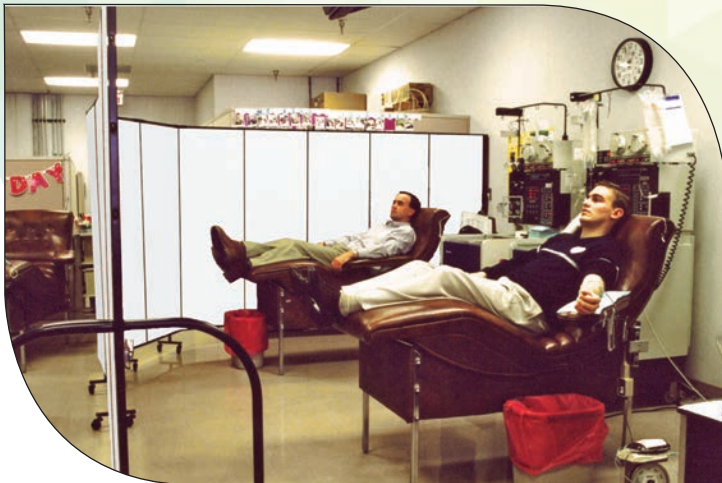
Solutions For Better Space Management



Corporations



Religious Facilities



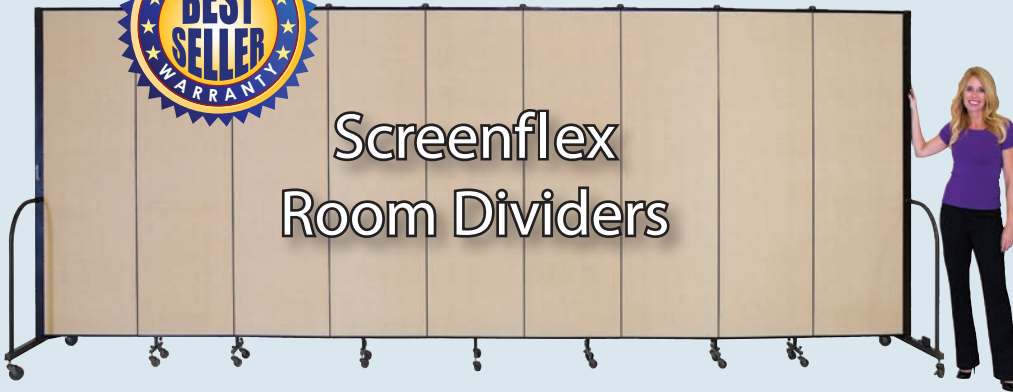
Health Care



Hospitality

Screenflex Room Dividers

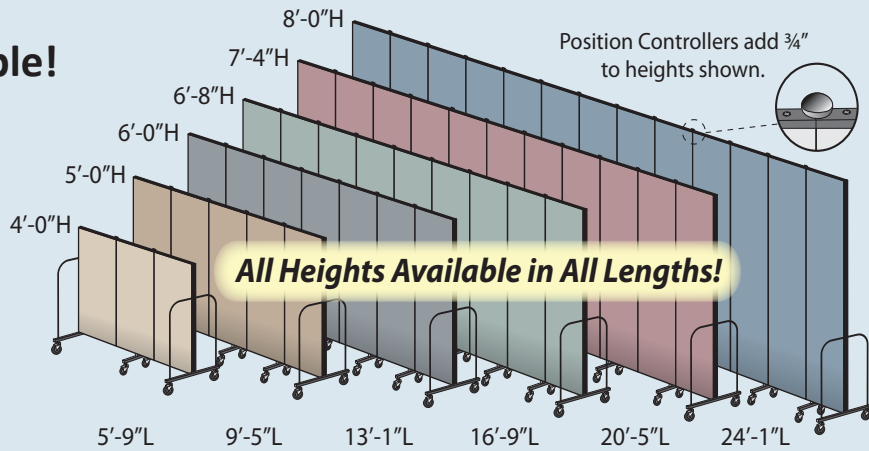
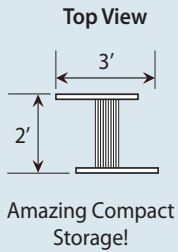
The All Purpose Dividers



Screenflex
Room Dividers

- Six Heights and Six Lengths Available
- Sound Absorbing Tackable Panels
- Pyramid Shaped End Frame for Maximum Stability
- 76% Recycled Materials
- Full Length Hinges Add Strength and Stability
- Self Leveling Casters Tame any Uneven Floor
- Position Controllers Secure Panels in Place

36 Sizes Available!



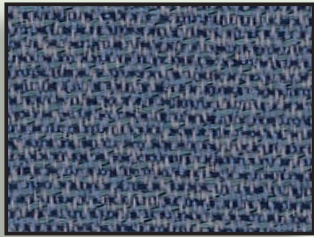
Industrial



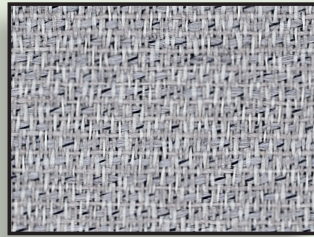
Anywhere!

Fabric and Vinyl Colors

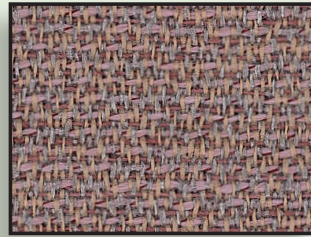
Commercial Fabric - 100% Recycled Polyester (Shown at 70% of Actual Size)



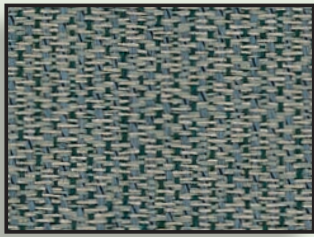
Blue - CB



Grey - CG



Mauve - CM



Green - CN



Oatmeal - CO

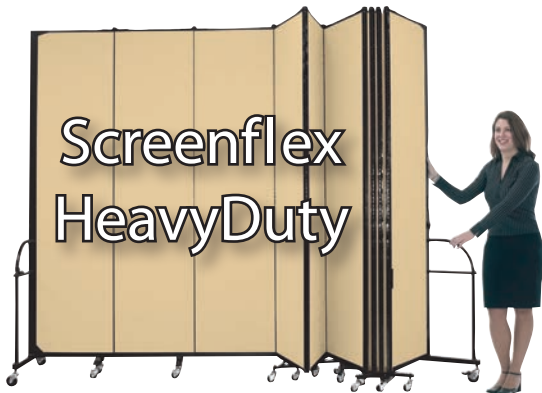


Wheat - CW



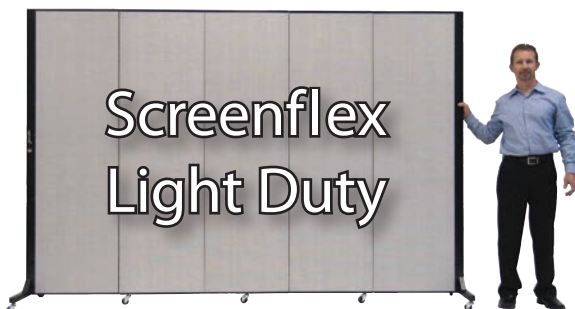
Fabrics treated with **BLOCKaide™** Fabric Protector

Other Fine Lines



HeavyDuty Room Dividers..."The World's Toughest Room Divider!" Just as you would use a Sports Utility Vehicle to travel across rough terrain, Screenflex **HEAVYDUTY** Room Dividers are designed to handle unusually challenging conditions.

- Available in Two Heights (6'-0", 7'-4") and All Standard Lengths
- Oversized Extra Strong Locking Corner Casters
- Extra Wide Support Legs
- Multiunit Connectors
- Extra Heavy Gauge Wrap Around Gusset Plates
- Position Controllers Secure Panels in Place
- Oversized Self Leveling Double Wheel Casters
- Added Crossbar with Sturdy Storage Latch
- Corner Gusset Plates
- Hinges are Extra Thick

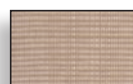


Light Duty Room Dividers..."Screenflex Quality in an Economical Room Divider".

- One Height: 6'-5", Two Lengths: 5'-9" & 9'-5"
- Cost efficient Solution for Dividing Open Space
- Amazingly Versatile and Flexible
- No Assembly Required
- Sound Absorbing Panels
- Options: MultiUnit Connectors and Position Controllers



Light Grey - BG



Tan - BO



Mist Blue - BB



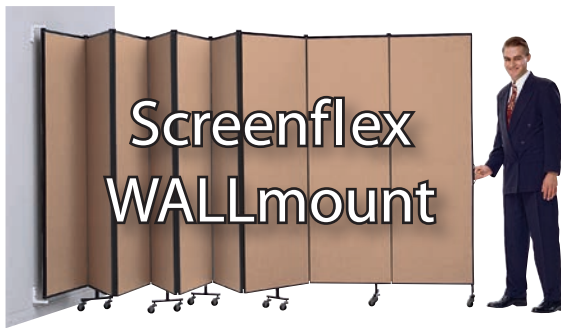
Charcoal Black - DX

Other Fine Lines



Clear Dividers... The perfect choice when "Division with Vision" is desired!

- 3/16" Clear Acrylic Panels
- Black Anodized Extruded Aluminum Channel Framing
- Wet Erase Marker Friendly Panels
- 6'-2" Height
- 2 Lengths: 3'-4" Long (One Panel) or 10'-0" Long (Three Panel)
- Product Ships Fully Assembled
- Folds for Compact Storage
- Easy One Person Set Up in Any Configuration in Seconds
- Panellocks Secure Panels Firmly in Place
- Locking Corner Casters
- Set Up Straight or with Corners



WALLmount™ Room Dividers... Flexible, Versatile, WALLmount™ Room Dividers have one end mounted to the wall and fold against the wall for storage. They can be extended in any direction to divide your space as desired.

- Full Length Aluminum Hinges Add Strength and Stability Throughout the Entire Room Divider
- Sound Absorbing/Tackable Panels
- Six Heights and Six Lengths Available
- Multiple Fabric/Vinyl Styles and Colors
- Powder Painted Metal Panel Trim
- Environmentally Friendly with 76% Recycled Material



Three and Six Panel Display Towers

Excellent for message boards, trade shows or to display artwork. Folds flat for easy storage and/or moving within your facility.

- Folds FLAT For Easy Storage
- Three Panel Tower Provides up to 68 Sq. Ft. of Display Area
- Six Panel Tower Provides up to 136 Sq. Ft. of Display Area
- Two Heights to Choose From: 5'9" or 6'5"
- Accepts Push Pins, Tacks, Staples or Optional Artwork Hanger
- Easily Rolls From Room to Room
- Lockable Casters

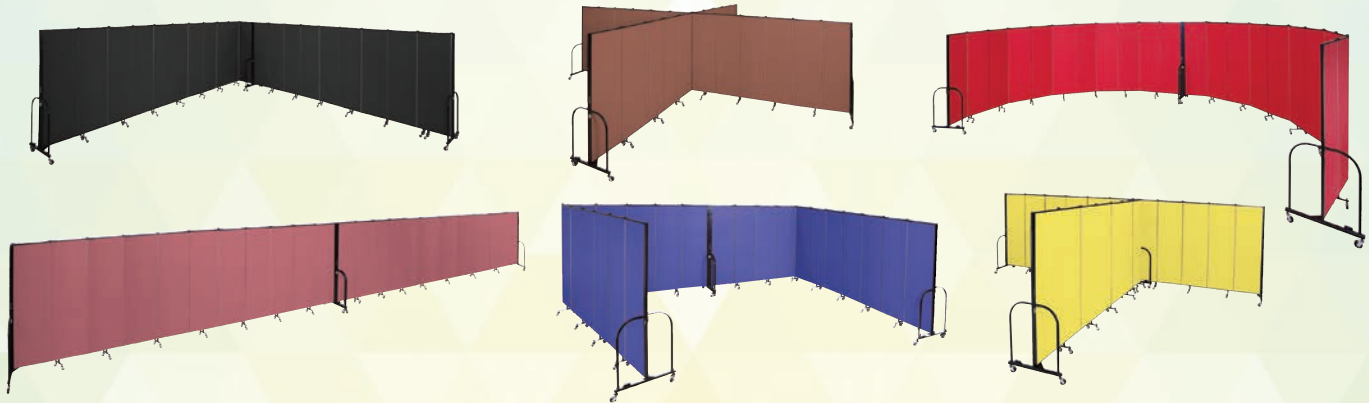
Screenflex = Quality = Value For You!

For over 25 years, we have set the highest standards for the manufacturing of our Screenflex Portable Room Dividers. Providing our customers with quality products and superior service continues to be our #1 goal. This results in many years of maintenance free use and great value for your organization.

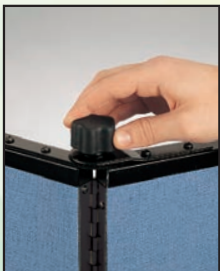
As a testament to our quality, we would be happy to provide you with a list of very satisfied Screenflex customers within your immediate vicinity. Please contact your local dealer for this information.

Sincerely,
Rich Maas
Rich Maas VP

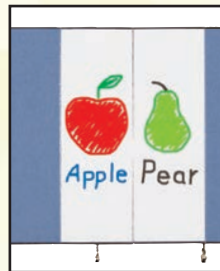
Unlimited Set-Up Possibilities!



Room Divider Options



Panelocks™
A twist of the Panelock™ knob locks the panels at any angle. Replaces standard Position Controllers.



Dry Erase Panels
Any number of panels can be covered with dry erase material in place of fabric or vinyl.



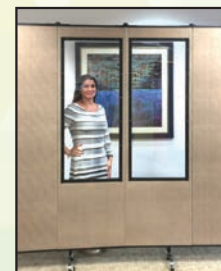
Markerboard
36" x 42" Melamine surface dry erase marker board. Adjustable strap hangers for hanging on Room Dividers.



MultiUnit Connectors
Set of chrome plated sash latches installed on the end frames of a FREEstanding Room Divider to create Room Dividers of any length.



Door
2' wide self closing door, available in 6 heights, mounts to the end frame of your Freestanding Room Divider.



Window
Clear Plexiglass windows are available in 3 sizes:
10" x 10"
20" x 24"
20" x 48"



Storage Caddy
Sturdy fabric storage caddy has 6 pockets and 2 zippered compartments for a handy place to store just about anything!



Glides
For long term use, our 4'-0"H, 5'-0"H, 6'-0"H and 6'-8"H dividers are available with glides in lieu of casters, at no additional charge.

