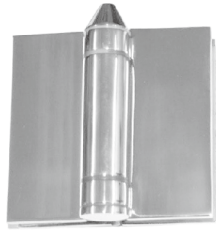


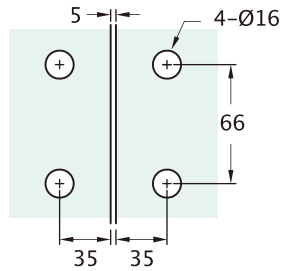
Technical Detail

Adjustable 180° Glass to glass pool gate hinge



180° Glass to glass pool gate hinge

Glass cut out:



Installation Instruction

MODEL	Max door width	Max door weight	Glass thickness
PGHGG180170	1000mm	40KG	10 - 12mm glass
PGHGG180171	1000mm	40KG	10 - 12mm glass

Finishes
 170 = Brushed stainless steel
 171 = Polished stainless steel

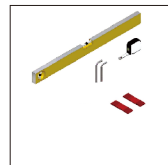
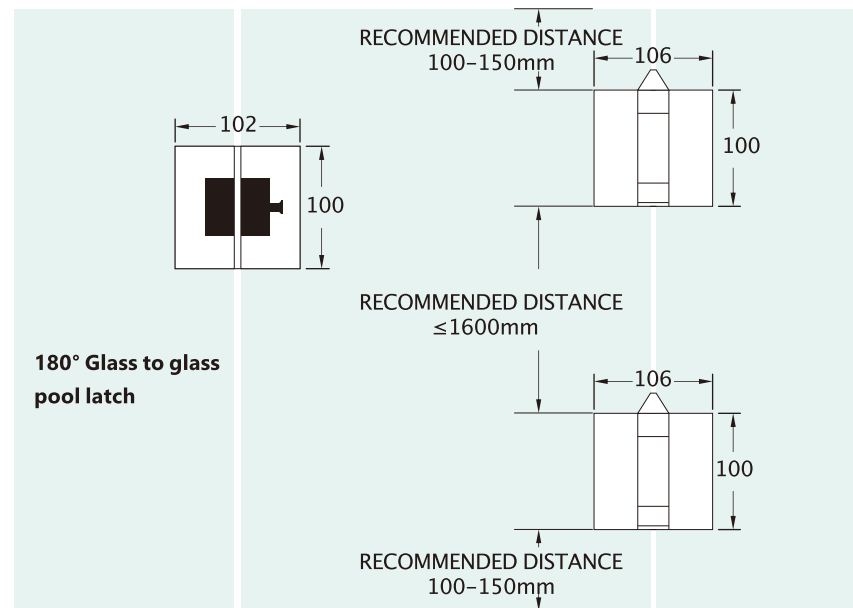
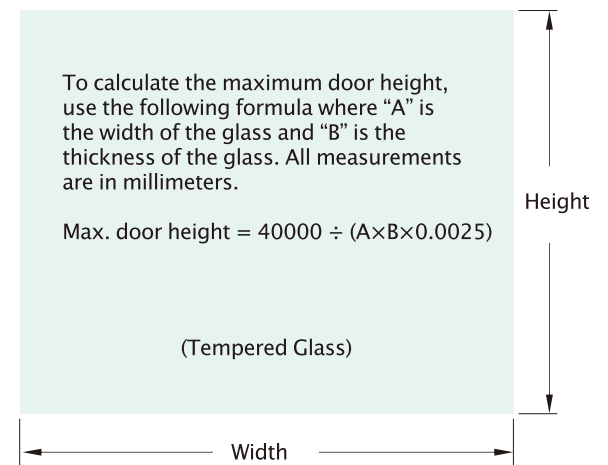
Step 1. Ensure all glass panels are made of tempered glass.

Step 2. Measure the size and weight of the glass door. Do not exceed the max door width and max door weight.

Step 3. Prepare the glass as indicated in the template and at the recommended distances.

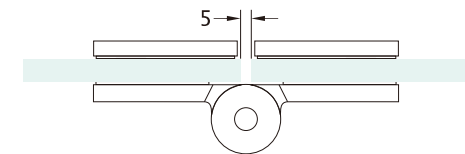
Step 4. Install the hinge to the door as shown in the drawing.

Step 5. Finish installing the door and test that it opens and closes properly.



Tools required to install:

Spirit Level, Measuring tape,
 Allen key set,
 Plastic wedges



Spring tension adjustment under the conic cap