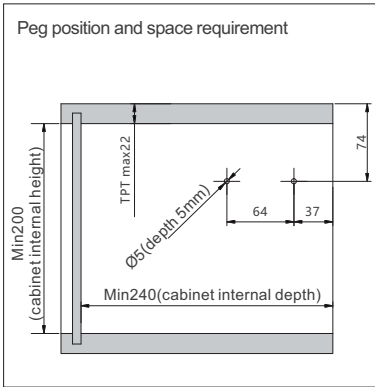
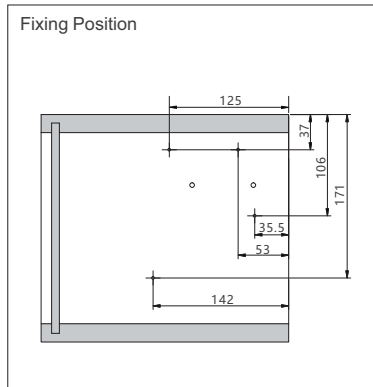


Richelieu ai² Lift System- Atmos Series

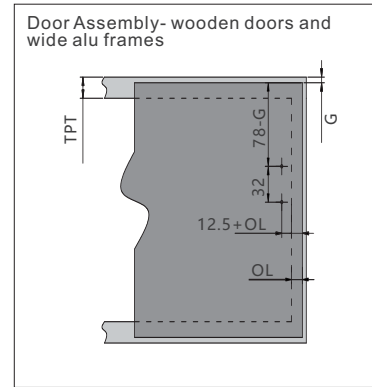
Installation Dimensions(mm)



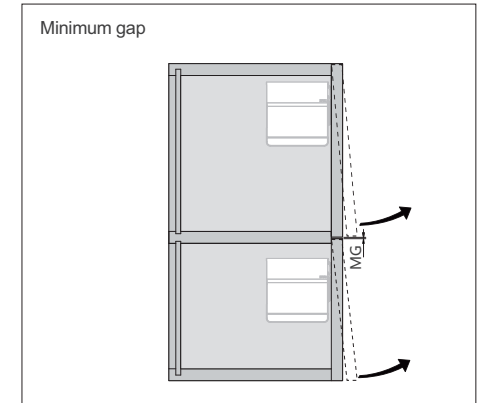
TPT: top panel thickness



4 pieces of #6 x 1-1/2" wood screw, flat head

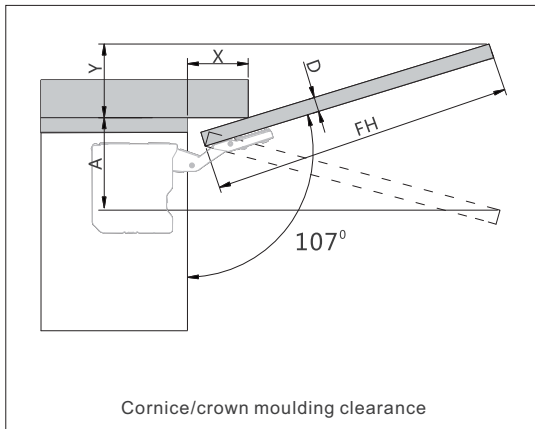


Wooden Door: 4 x flat-head #6 x 5/8" wooden screws
Wide Alu Door: 4 x self-tapping screws (not provided)
OL: door overlay of side panel
G: gap



MG: Minimum gap 2mm

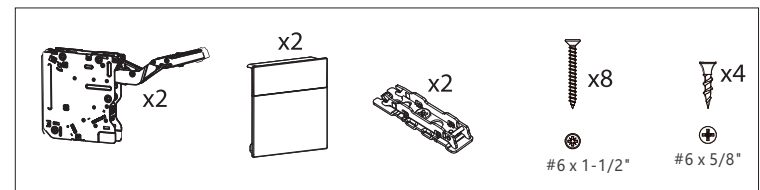
Installation Dimensions(mm)



FH: front height

D(mm)	16	19	22	26	28
X(mm)	70	58	49	35	26
Opening angle restrictors	Space requirement (mm)				
Without	Y=FH x 0.29-15+D				
100° (#AT00ANGLE100)	Y=FH x 0.17-15+D				
75° (#AT00ANGLE75)	A=FH x 0.26+15-D				

Included in Kit Pack

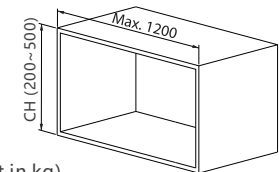


Calculating power factor PF

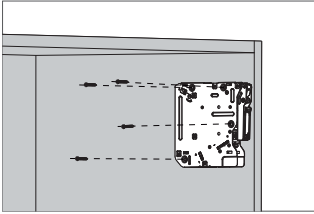
Model	Power factor PF
#AT00LD	580-1105
#AT00MD	1105-1920
#AT00HD	1920-3500

PF=CH x (door weight + 2 x handle weight in kg)

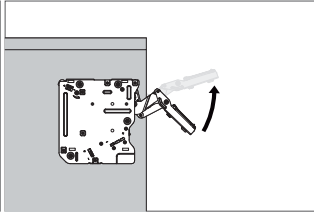
CH: cabinet height



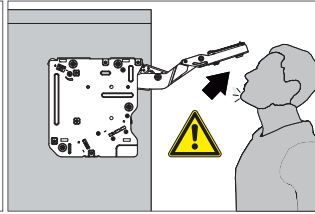
Assembly



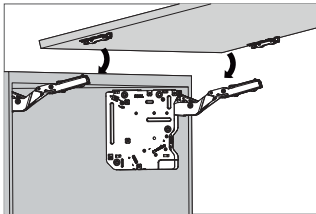
Assembly



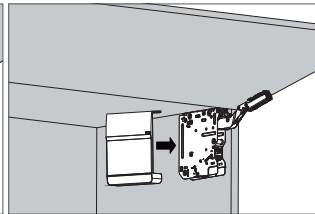
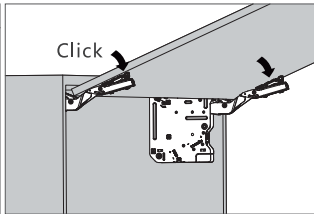
Caution when opening arm



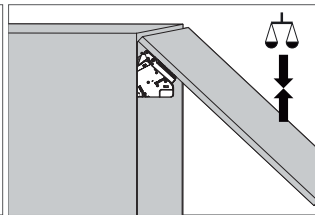
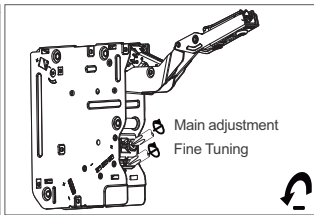
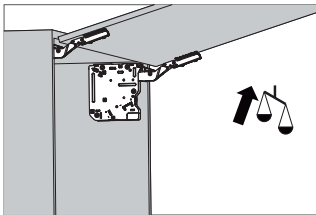
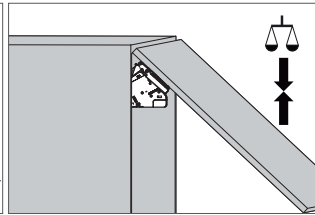
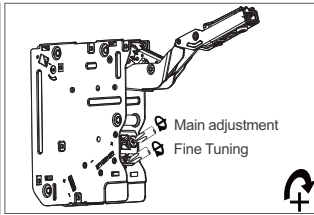
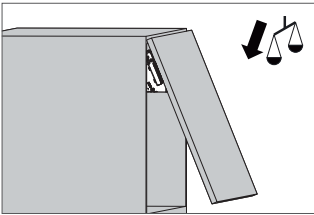
The arm of this device could spring up and cause injury. Do not push the arm down without door attached.



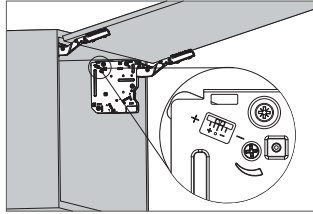
Door Assembly



Lift Mechanism Adjustment

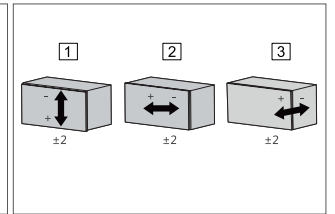
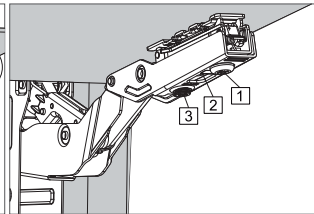
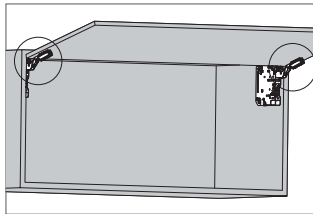


Closing Speed Adjustment

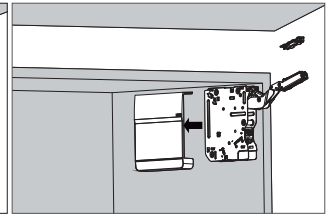
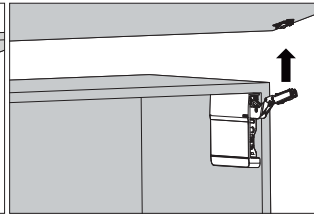
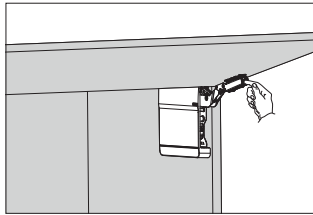


"+" increasing soft-closing time (turn adjustment screw counter-clockwise)
 "-" reducing soft-closing time (turn adjustment screw clockwise)

Door Position Adjustment

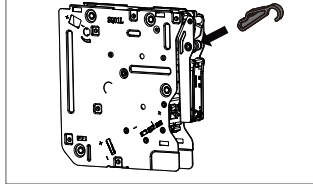


Removal

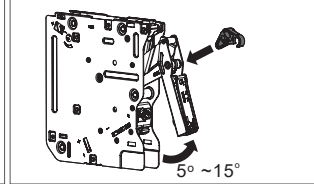


Opening Angle Restrictor

100° (#AT00ANGLE100)



75° (#AT00ANGLE75)



Assembly