

## Sentinel Mark II® Pressure Balance Valve with Shower Head

### VALVE FEATURES:

- Four port valve with ½ in. NPT Male (1/2 in. copper sweat) inlets and outlets
- Pressure balancing and ceramic temperature regulating cartridge, with built in check valves
- Brass valve body with adjustable temperature stop limit
- Valve can be installed back-to-back
- Furnished with ½ in. pipe cap, includes rough-in template

### TRIM FEATURES:

- Chrome plated brass wall plate with metal index
- Chrome plated brass level handle
- Independent center sleeve allows up to 1 in. of rough-in variation
- Includes mounting plate and hardware

### SHOWER FEATURES:

- S-2272-E2 shower head
- S-2500 shower arm and flange

### OPTIONS:

- IS: Integral stops
- LH: Less showerhead
- 1: S-2251 showerhead
- 2: S-2252 showerhead
- 3: S-2253 showerhead
- 9: S-2292 showerhead

### STOCK FINISH:



PC

### STANDARDS:

- ASSE 1016 certified (shower valve)
- ASME 112.18.1/CSA B125.1 certified (shower valve)
- WaterSense certified (S-2272-E2 shower head)
- ADA Compliant (Shower valve & trim)

### WARRANTY:

Visit [www.speakman.com](http://www.speakman.com) for full product warranty information

- See [Speakman.com](http://Speakman.com) for warranty information



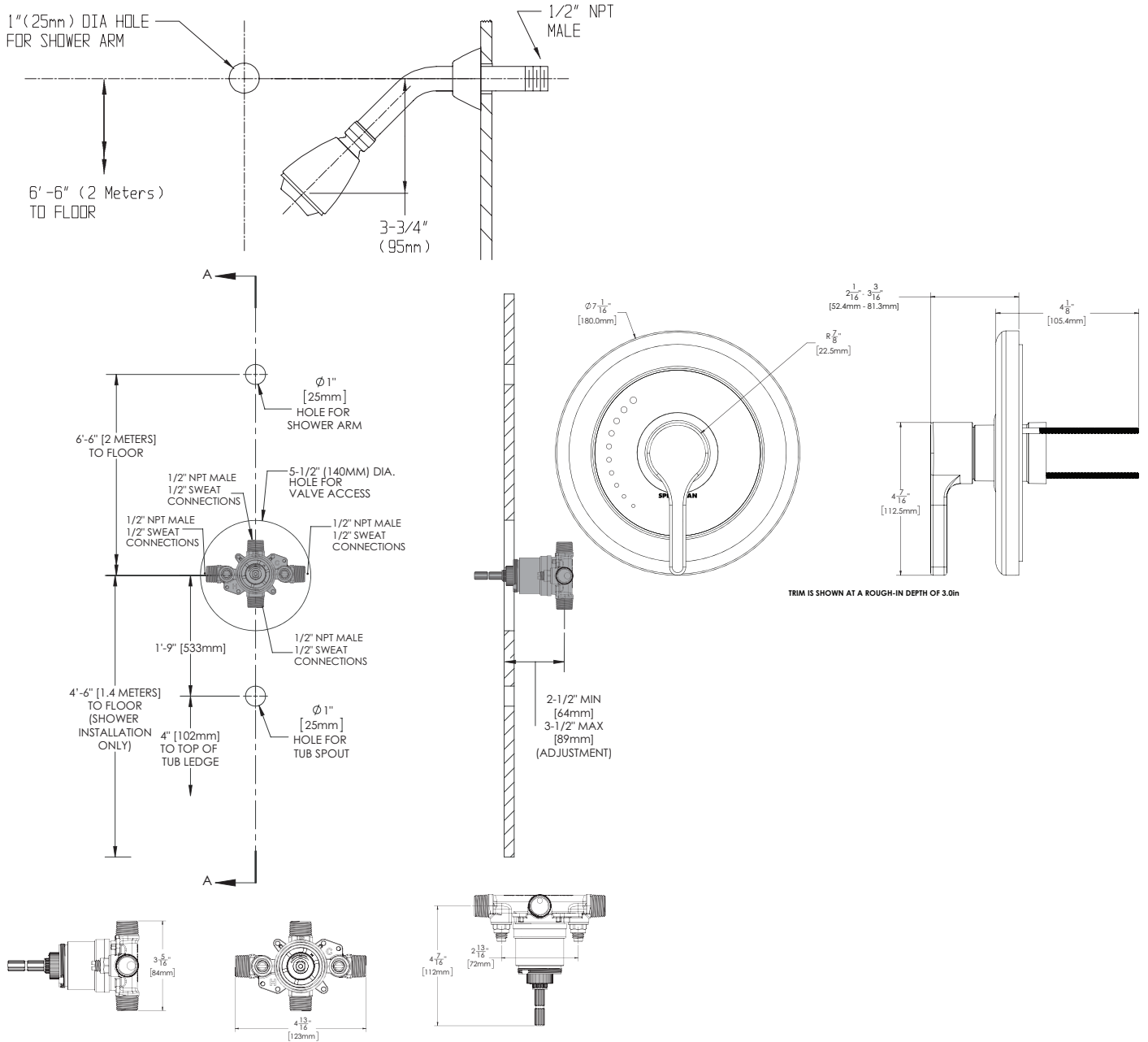
Information continues on next page

NOTE: 1. All dimensions are in inches (millimeters) unless otherwise specified and are subject to change without notice. 2. Unless otherwise specified, all inlets and outlets are 1/2" female copper sweat. 3. For ADA mounting locations, consult ADAAG, ANSI A117.1, or static regulations

Architect/Engineer Approval Space:

P: 800-537-2107  
F: 800-977-2747  
W: [WWW.SPEAKMAN.COM](http://WWW.SPEAKMAN.COM)  
R: 01-SEPTEMBER 2021

## Sentinel Mark II® Pressure Balance Valve with Shower Head



NOTE: 1. All dimensions are in inches (millimeters) unless otherwise specified and are subject to change without notice. 2. Unless otherwise specified, all inlets and outlets are 1/2" female copper sweat. 3. For ADA mounting locations, consult ADAAG, ANSI A117.1, or static regulations

Architect/Engineer Approval Space:

P: 800-537-2107  
 F: 800-977-2747  
 W: WWW.SPEAKMAN.COM  
 R: 01-SEPTEMBER 2021