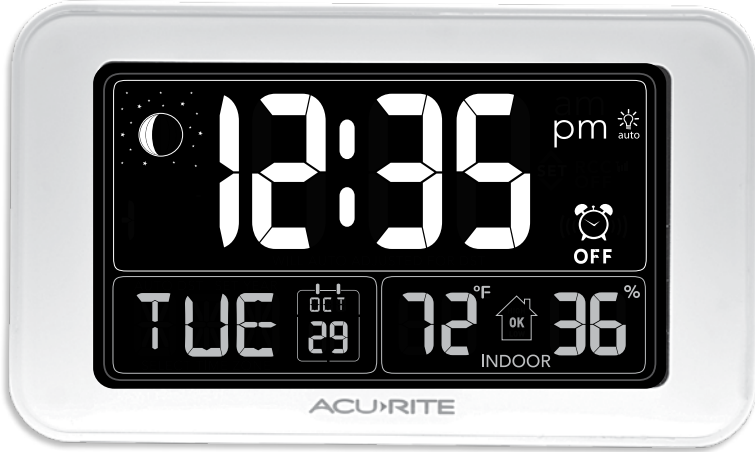


Intelli-Time Alarm Clock

model 13040



CONTENTS

Unpacking Instructions	2	Backlight Settings	6
Package Contents	2	USB Charging	7
Product Registration	2	Troubleshooting	8
Features & Benefits	3	Care & Maintenance	9
Clock Setup	4	Replace Intelli-Time® Battery ...	9
Intelli-Time® Clock	5	Specifications	9
Set the Time, Date & Units	5	Customer Support	10
Alarm Clock Placement	5	Warranty	10
Using the Alarm Clock	6		

Questions? Contact Customer Support at (877) 221-1252 or visit www.AcuRite.com.

SAVE THIS MANUAL FOR FUTURE REFERENCE.

ACURITE®

Congratulations on your new AcuRite product. To ensure the best possible product performance, please read this manual in its entirety and retain it for future reference.

Unpacking Instructions

Remove the protective film that is applied to the LCD screen prior to using this product. Locate the tab and peel off to remove.

Package Contents

1. Alarm Clock
2. Power Adapter
3. Instruction Manual

IMPORTANT

PRODUCT MUST BE REGISTERED
TO RECEIVE WARRANTY SERVICE

PRODUCT REGISTRATION

Register online
to receive 1 year
warranty protection

www.AcuRite.com

SHOP NOW

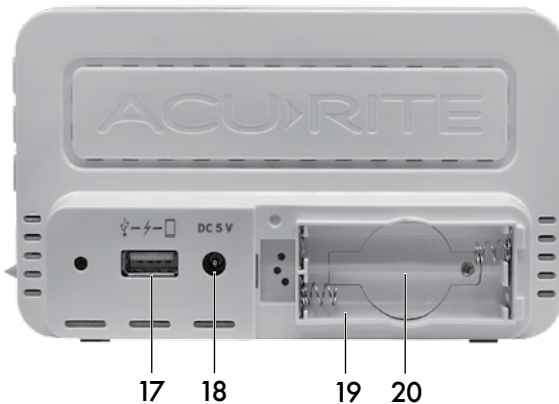
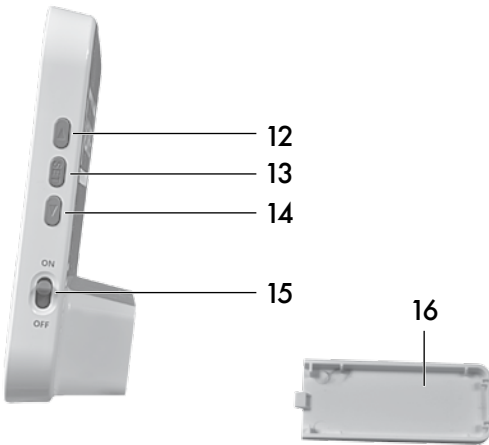
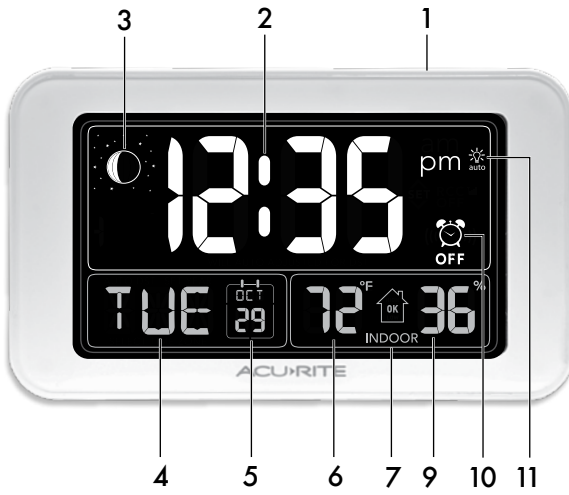
SUPPORT

Support Forum

Archived Products

▶ Register a Product

Features & Benefits



FRONT OF CLOCK

- 1. SNOOZE Button**
- 2. Intelli-Time® Clock**
Pre-programmed to the correct time and automatically updates for Daylight Saving Time.
- 3. Moon Phase**
- 4. Day of the Week**
- 5. Date**
- 6. Current Indoor Temperature**
- 7. Humidity Level Icon**
Indicates a high, low or ideal humidity comfort level.
- 9. Current Indoor Humidity**
- 10. Alarm ON/OFF Indicator**
- 11. AUTO DIM Icon**
Indicates display backlight "AUTO DIM" mode activated.

SIDE OF CLOCK

- 12. ▲ Button**
For setup and backlight brightness preferences.
- 13. SET Button**
For setup preferences.
- 14. ▼ Button**
For setup and backlight brightness preferences.
- 15. Alarm ON/OFF Switch**
- 16. Battery Compartment Cover**

BACK OF CLOCK

- 17. USB Charger**
For compatible Smartphones.
- 18. Plug in for Power Adapter**
- 19. Battery Compartment**
- 20. Intelli-Time® Battery Compartment**

Clock Setup

1 Plug in Power Adapter

For the best performance, plug in the power adapter as the main power source for this product.

2 Install or Replace Backup Batteries

1. Remove the battery compartment cover.
2. Insert 2 x AAA alkaline batteries into the battery compartment, as shown. Follow the polarity (+/-) diagram in the battery compartment.
3. Replace the battery cover.



1 Plug in Power Adapter (on back of unit)



2 Install or Replace Backup Batteries 2 AAA alkaline batteries



IMPORTANT: Batteries are a backup power source to preserve records in the event of a power outage. **Power adapter recommended as the primary power source to enjoy the full functionality of the product.**



PLEASE DISPOSE OF OLD OR DEFECTIVE BATTERIES IN AN ENVIRONMENTALLY SAFE WAY AND IN ACCORDANCE WITH YOUR LOCAL LAWS AND REGULATIONS.

BATTERY SAFETY: Clean the battery contacts and also those of the device prior to battery installation. Remove batteries from equipment which is not to be used for an extended period of time. Follow the polarity (+/-) diagram in the battery compartment. Promptly remove dead batteries from the device. Dispose of used batteries properly. Only batteries of the same or equivalent type as recommended are to be used. DO NOT incinerate used batteries. DO NOT dispose of batteries in fire, as batteries may explode or leak. DO NOT mix old and new batteries or types of batteries (alkaline/standard). DO NOT use rechargeable batteries. DO NOT recharge non-rechargeable batteries. DO NOT short-circuit the supply terminals.

Intelli-Time® Clock

Intelli-Time clock and calendar are pre-programmed to the correct time and date, and update automatically for Daylight Saving Time. All you need to do is select your time zone during clock setup.

Set the Time, Date & Units

Press and HOLD the "SET" button, located on the side of the clock until "SELECT TIME ZONE" appears on the display to enter SET MODE. Once in SET MODE the preference you are currently setting will blink on the clock.

To adjust the currently selected (flashing) item, press and release the "▲" or "▼" buttons (press and HOLD to fast adjust).

To save your adjustments, press and release the "SET" button to adjust the next preference. The preference set order is as follows:

TIME ZONE (PST MST CST EST AST HAT AKT NDT)

AUTO DST ON/OFF*

CLOCK HOUR

CLOCK MINUTE

CALENDAR MONTH

CALENDAR DATE

CALENDAR YEAR

TEMPERATURE SCALE (°F or °C)

You will automatically exit SET MODE if no buttons are pressed for 5 seconds. Enter SET MODE at any time by pressing and holding the "SET" button until "SELECT TIME ZONE" appears on the display.

*If you live in an area that observes daylight saving time, DST should be set to ON.

Alarm Clock Placement



Place alarm clock in a dry area free of dirt and dust. To help ensure an accurate indoor temperature measurement, be sure to place the clock away from heat sources or vents.

Important Placement Guidelines

- To ensure accurate temperature measurement, place out of direct sunlight and away from any heat sources or vents.

Using the Alarm Clock

Set the Alarm Time

To set alarm time, press and RELEASE the "SET" button to enter ALARM SET MODE.

To adjust the currently selected (flashing) item, press and release the "▲" or "▼" buttons (press and HOLD to fast adjust).


To save your adjustments, press and release the "SET" button to adjust the next preference. The preference set order is as follows:

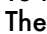
ALARM CLOCK HOUR (Please note AM/PM indicator)

ALARM CLOCK MINUTE

You will automatically exit ALARM SET MODE if no buttons are pressed for 5 seconds. Enter ALARM SET MODE at any time by pressing and RELEASING the "SET" button.

Alarm Clock ON or OFF

To turn alarm on: Slide the ON/OFF switch on the side of the clock to ON. The  indicator appears on the screen.

To turn alarm off: Slide the ON/OFF switch on the side of the clock to OFF. The  indicator appears on the screen.

Alarm Clock SNOOZE


The alarm clock will sound, increasing in volume over a 2 minute period. When the alarm is sounding, press the "SNOOZE" button to activate the SNOOZE function for 10 minutes. The SNOOZE function can be activated up to 10 times.

Backlight Settings

This clock's color display features 6 different lighting settings: 100% (High), 70%, 50% (Medium), 30%, 10% and 5% (Low) brightness.

When clock is powered with the power adapter, backlight remains on at 100% brightness by default. Press the "SNOOZE" button at any time to momentarily light the display at 100% brightness. After 5 seconds, the clock will return to the user-selected brightness setting.

Using battery power alone, the backlight is available momentarily for 10 seconds by pressing the "SNOOZE" button.

Manually adjust the backlight brightness by pressing and releasing the "▲" or "▼" buttons when not in SET MODE or ALARM SET MODE. Press the "▼" button a sixth time to enter "AUTO DIM" mode.  will appear to the right of the time.

AUTO DIM MODE: Automatically adjusts display brightness based on time of day.

7:00 a.m. - 9:00 p.m. = 100% brightness

9:01 p.m. - 6:59 a.m. = 5% brightness

Humidity Level Icon

The Humidity Level Icon easily conveys a low, high or ideal indoor humidity level for your home and health:



LOW Humidity Level

Humidity is low relative to temperature. Makes for a **DRY** environment.



OK Humidity Level

Humidity is OK relative to temperature. Makes for an **IDEAL** environment.



HIGH Humidity Level

Humidity is high relative to temperature. Makes for a **HUMID** environment.

Learn more at <http://www.acurite.com/humidity-health>

Moon Phase

Track the phases of the moon, conveyed through simple lunar phase icons:



NEW



WAXING
CRESCENT



1ST
QUARTER



FULL



3RD
QUARTER



WANING
CRESCENT



USB Charging

Charge your mobile device by plugging your device's USB power cord (not included) into the USB charging port on the back of the clock.

USB charging is only available during power adapter use; USB charging is not active when operating on battery power only.

Note: Follow the manufacturer's instructions for your mobile device(s) to determine compatibility with the USB charging feature on this product. Some devices may not support USB charging or may require a higher power rating than this product provides. Observe the charging status on your device. Ensure your device is working properly before attempting to charge.



Troubleshooting

Clock is too dark, hard to read or doesn't work	<ul style="list-style-type: none">• Verify power adapter is plugged in.• Check that the batteries are installed correctly. Batteries may need to be replaced.• Increase brightness using "▲"/"▼" buttons, located on the side of the clock.• The optimum viewing angle for this product is from slightly above it.
Inaccurate temperature	<ul style="list-style-type: none">• Make sure the clock is placed out of direct sunlight and away from any heat sources or vents (see page 5).

If your AcuRite product does not operate properly after trying the troubleshooting steps, visit www.AcuRite.com or call (877) 221-1252 for assistance.

Care & Maintenance

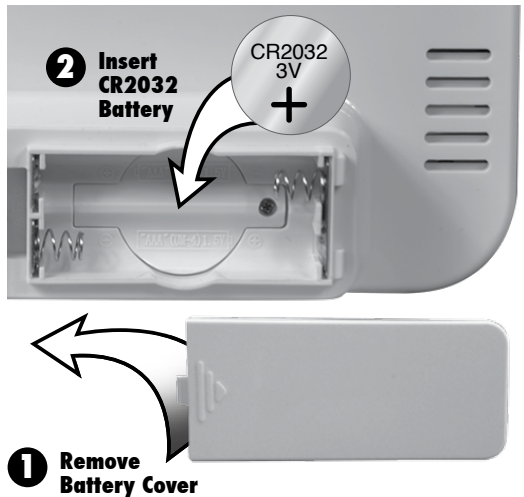
Clock Care

Clean with a soft, damp cloth. Do not use caustic cleaners or abrasives. Keep away from dust, dirt and moisture. Clean ventilation ports regularly with a gentle puff of air.

Replace Intelli-Time Clock Battery

Intelli-Time technology is powered by a pre-installed coin-cell battery that stores the time and date settings. The battery has a shelf life of several years. Time and date will need to be entered after replacing Intelli-Time battery. To replace the Intelli-Time battery:

1. Locate the coin cell battery compartment door in the battery compartment of the alarm clock. Unscrew and remove the compartment cover.
2. Insert 1 x CR2032 coin cell battery into the battery compartment, as shown. Install battery with "+" positive terminal facing OUT.
3. Screw in the battery cover.



WARNING: THIS PRODUCT CONTAINS A BUTTON-CELL BATTERY. IF SWALLOWED, IT COULD CAUSE SEVERE INJURY OR DEATH IN JUST 2 HOURS. SEEK MEDICAL ATTENTION IMMEDIATELY IF INGESTED.



Specifications

TEMPERATURE RANGE	Indoor: 32°F to 122°F; 0°C to 50°C
HUMIDITY RANGE	Indoor: 1% to 99% RH
OPERATING FREQUENCY	433 MHz
POWER	Clock: 5v power adapter 2 x AAA alkaline batteries (for backup only)
	USB: 1.5A output
DATA REPORTING	Indoor data: 60 second updates

Customer Support

AcuRite customer support is committed to providing you with best-in-class service. **For assistance**, please have the model number of this product available and contact us in any of the following ways:



(877) 221-1252



info@chaney-inst.com

24/7 support at www.AcuRite.com

- ▶ Installation Videos
- ▶ Register your Product
- ▶ Instruction Manuals
- ▶ Support User Forum
- ▶ Replacement Parts
- ▶ Submit Feedback & Ideas

IMPORTANT

PRODUCT MUST BE REGISTERED
TO RECEIVE WARRANTY SERVICE

PRODUCT REGISTRATION

Register online
to receive 1 year
warranty protection

www.AcuRite.com

SHOP NOW

SUPPORT

Support Forum

Archived Products

▶ Register a Product

Limited One Year Warranty

At AcuRite, we proudly uphold our commitment to quality technology. Chaney Instrument Co. warrants that all products it manufactures to be of good material and workmanship, and to be free of defects when properly installed and operated for a period of one year from the date of purchase.

We recommend that you visit us at www.AcuRite.com for the fastest way to register your product. However, product registration does not eliminate the need to retain your original proof of purchase in order to obtain warranty benefits.

Chaney Instrument Co. warrants that all products it manufactures to be of good material and workmanship, and to be free of defects when properly installed and operated for a period of one year from the date of purchase. Remedy for breach of this warranty is limited to repair or replacement of the defective item(s). Any product which, under normal use and service, is proven to breach the warranty contained herein within ONE YEAR from date of sale will, upon examination by Chaney, and at its sole option, be repaired or replaced by Chaney. Transportation costs and charges for returned goods shall be paid for by the purchaser. Chaney hereby disclaims all responsibility for such transportation costs and charges. This

warranty will not be breached, and Chaney will give no credit for products it manufactures which have received normal wear and tear, been damaged (including by acts of nature), tampered, abused, improperly installed, damaged in shipping, or repaired or altered by others than authorized representatives of Chaney.

The above-described warranty is expressly in lieu of all other warranties, express or implied, and all other warranties are hereby expressly disclaimed, including without limitation the implied warranty of merchantability and the implied warranty of fitness for a particular purpose. Chaney expressly disclaims all liability for special, consequential or incidental damages, whether arising in tort or by contract from any breach of this warranty. Some states do not allow the exclusion or limitation of incidental or consequential damages, so the above limitation or exclusion may not apply to you. Chaney further disclaims all liability from personal injury relating to its products to the extent permitted by law. By acceptance of any of Chaney's products, the purchaser assumes all liability for the consequences arising from their use or misuse. No person, firm or corporation is authorized to assume for Chaney any other liability in connection with the sale of its products. Furthermore, no person, firm or corporation is authorized to modify or waive the terms of this paragraph, and the preceding paragraph, unless done in writing and signed by a duly authorized agent of Chaney. This warranty gives you specific legal rights, and you may also have other rights which vary from state to state.

For in-warranty claims: Chaney Instrument Co.
965 Wells St., Lake Geneva, WI 53147

ACU RITE®



Weather
Stations



Temperature
& Humidity



Weather
Alert Radio



Kitchen
Thermometers
& Timers



Clocks

It's more than accurate, it's ACU RITE.

AcuRite offers an extensive assortment of precision instruments, designed to provide you with information you can depend on to Plan your day with confidence™.

www.AcuRite.com

©Chaney Instrument Co. All rights reserved. AcuRite is a registered trademark of the Chaney Instrument Co., Lake Geneva, WI 53147. All other trademarks and copyrights are the property of their respective owners. AcuRite uses patented technology. Visit www.AcuRite.com/patents for details.