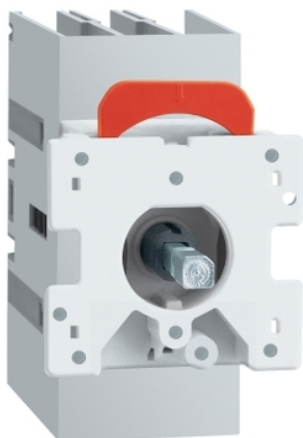


VLS3P016D1

Disconnect switch, TeSys VLS, body switch, 16A, 10HP at 480VAC, UL508, three phase, 5kA SCCR, size 1, door mount



Main

Range	TeSys
Product Name	TeSys VARIO LS
Device Short Name	VLS3P
Product Type	Switch body

Complementary

Mounting Support	Door
Performance Level	High performance
Number of Poles	3P
Contact Type and Composition	3 NO
Color	Grey
[Ue] UL Rated Operational Voltage	600 V AC 50/60 Hz UL 508
Network type	AC
Network frequency	50/60 Hz
UL Maximum Horsepower Ratings	5 Hp 200/208 V AC 5 Hp 240 V AC 10 Hp 480 V AC 10 Hp 600 V AC 1 Hp 120 V AC 2 hp 240 V AC
[Ue] IEC Rated Operational Voltage	690 V AC 50/60 Hz
IEC Rated Operational Power in W	7.5 KW 400 V AC-23A) 7.5 KW 500 V AC-23A) 11 kW 690 V AC-23A)
[Ie] Rated Operational Current	16 A Ue: 600 V UL 508 16 A AC-21A Ue: 400 V 16 A AC-21A Ue: 500 V 16 A AC-21A Ue: 690 V 16 A AC-22A Ue: 400 V 16 A AC-22A Ue: 500 V 16 A AC-22A Ue: 690 V 16 A AC-23A Ue: 400 V 16 A AC-23A Ue: 500 V 16 A AC-23A Ue: 690 V
[Ith] Conventional Free Air Thermal Current	16 A 131 °F (55 °C)
[Ithe] Conventional Enclosed Thermal Current	16 A
Making capacity (I Rms)	24 A 690 V AC-21A 48 A 690 V AC-22A 160 A 690 V AC-23A
Breaking Capacity	24 A 690 V AC-21A) 48 A 690 V AC-22A) 128 A 690 V AC-23A)
SCCR	Fuse RK5 30 A maximum: 5 kA at 600 V AC
Rated Conditional Short Circuit Current	50 kA 400 V 16 A gG
[Icm] Rated Short Circuit Making Capacity	1128 A 690 V

The information provided in this documentation contains general descriptions and/or technical characteristics of the performance of the products contained herein. This documentation is not intended as a substitute for and is not to be used for determining suitability or reliability of these products for specific user applications. It is the duty of any such user or integrator to perform the appropriate and complete risk analysis, evaluation and testing of the products with respect to the relevant specific application or use thereof. Neither Schneider Electric Industries SAS nor any of its affiliates or subsidiaries shall be responsible or liable for misuse of the information contained herein.

Intermittent duty class	Class 120 - 60 %
[Uimp] rated impulse withstand voltage	8 kV
[Icw] rated short-time withstand Rms current	800 A 690 V 1 s
Mechanical Durability	100000 cycles
Electrical Durability	100000 cycles AC-21A
UL Wire Size	AWG 18...AWG 6 copper
IEC Terminal Connection	Power circuit screw clamp terminals 0.02 in ² (10 mm ²) solid Power circuit screw clamp terminals 0.02 in ² (16 mm ²) flexible - without cable end
Tightening Torque	Power circuit 15.93...17.70 lbf.in (1.8...2 N.m) screw clamp terminals
Height	3.07 in (78 mm)
Width	1.77 in (45 mm)
Depth	2.87 in (73 mm)
Product Weight	0.30 lb(US) (0.135 kg)

Environment

Standards	UL 508 CSA C22.2 No 14 IEC 60947-3
Product Certifications	CULus GL
Degree of Protection	IP20 conforming to IEC 60529
Mechanical Robustness	Vibrations 2...100 Hz Fc 0.7 g) IEC 60068-2-6 Shocks 11 ms Ea 15 gn) IEC 60068-2-27
Ambient Air Temperature for Operation	-13...131 °F (-25...55 °C)
Fire Resistance	1760 °F (960 °C) IEC 60695-2-11

Ordering and shipping details

Category	21734 - TESYS VLS DISCONNECT SWITCHES
Discount Schedule	CP1
GTIN	00785901560531
Nbr. of units in pkg.	1
Package weight(Lbs)	0.43 lb(US) (0.20 kg)
Returnability	Yes
Country of origin	IT

Packing Units

Unit Type of Package 1	PCE
Package 1 Height	3.15 in (8 cm)
Package 1 width	3.35 in (8.5 cm)
Package 1 Length	4.72 in (12 cm)

Offer Sustainability

REACH free of SVHC	Yes
EU RoHS Directive	Compliant EU RoHS Declaration
Toxic heavy metal free	Yes
Mercury free	Yes
RoHS exemption information	Yes
China RoHS Regulation	China RoHS Declaration