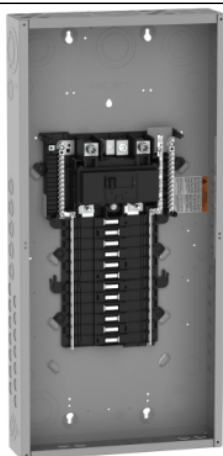


# Product data sheet

## Characteristics

# QO124M150P

Load center, QO, 1 phase, 24 spaces, 36 circuits, 150A convertible main breaker, PoN, NEMA1, UL



### Main

Marketing Trade Name	QO
Product Type	Load Center

### Complementary

Tightening Torque	Cover: 20 lb.in
Load Center Type	Main breaker
Rated Current	150 A
Number of Spaces	24
Max Short Circuit Current Rating	22 kA
Maximum Number of Single Pole Circuits	36
Maximum Number of Tandem Breakers	12
Number of Phases	1 phase
Ground Bar	Grounding bar (ordered separately)
Box Number	9
Height	29.86 in (758.44 mm)
Width	14.25 in (361.95 mm)
Depth	3.75 in (95.25 mm)

### Environment

Enclosure Rating	NEMA 1 for indoor
Ambient Air Temperature for Operation	23 °F (-5 °C) 104 °F (40 °C)
Product Certifications	UL Listed

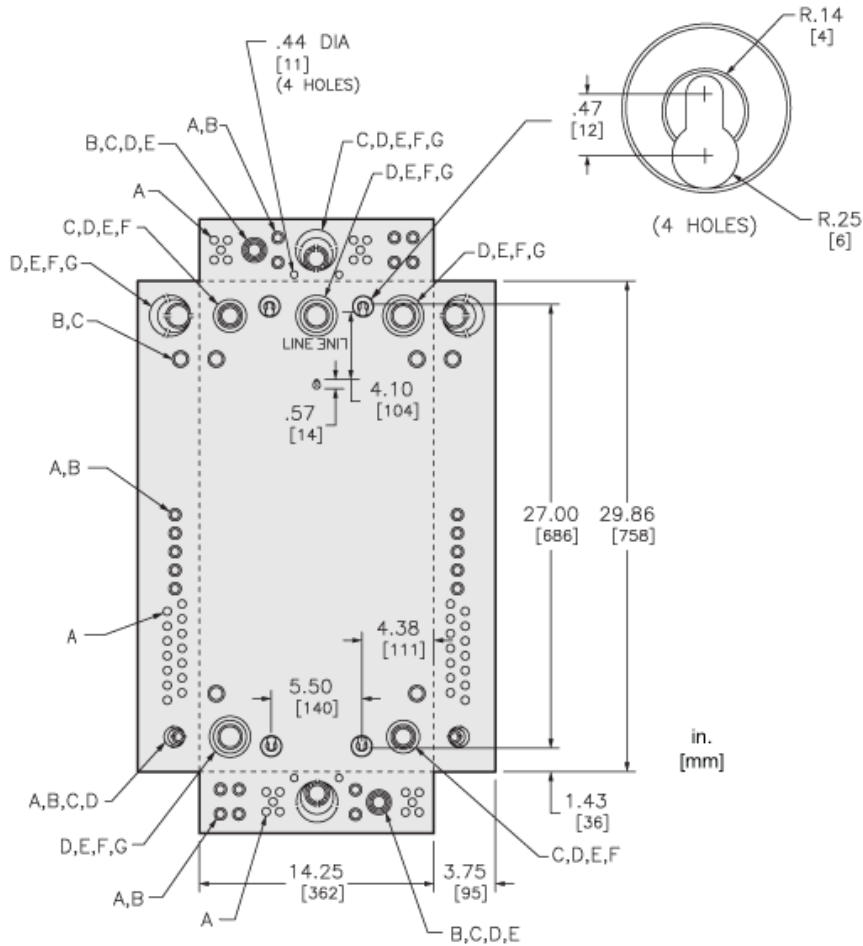
### Ordering and shipping details

Category	10001 - QO PON 1PH LC,12-60 CKT, MB N1
Discount Schedule	DE3A
GTIN	00785901609650
Nbr. of units in pkg.	1
Package weight(Lbs)	1 lb(US) (0.45 kg)
Returnability	Yes
Country of origin	US

## Offer Sustainability

California proposition 65	WARNING: This product can expose you to chemicals including: Lead and lead compounds, which is known to the State of California to cause cancer and birth defects or other reproductive harm. For more information go to <a href="http://www.P65Warnings.ca.gov">www.P65Warnings.ca.gov</a>
REACH Regulation	<a href="#">REACH Declaration</a>
REACH free of SVHC	Yes
EU RoHS Directive	Compliant <a href="#">EU RoHS Declaration</a>
Toxic heavy metal free	Yes
Mercury free	Yes
RoHS exemption information	<a href="#">Yes</a>
China RoHS Regulation	<a href="#">China RoHS Declaration</a>

Approximate Dimensions



KNOCKOUTS							
SYMBOL	A	B	C	D	E	F	G
IN	.50	.75	1.00	1.25	1.50	2.00	2.50
MM	13	19	25	32	38	51	64

## Connections and Wiring Diagrams

