

BONZAI



Bonzai Shower System
Model #1017-B & 1017-S
Owner's Manual



1017-Parts Legend

- | | | |
|-------------------------------|----------------------------|---------------------------|
| 1. NPT Nipple | 11. Screened Rubber Washer | 21. Hand Shower Hose |
| 2. PTFE (plumber's) Tape | 12. 90° Inlet | 22. 4mm Rubber Washer (2) |
| 3. Chrome 90° w/ Cone Washer | 13. Mount (2) | 23. Showerhead |
| 4. Tapered Plastic Washer | 14. Mounting Screw (2) | 24. 6mm Rubber Washer |
| 5. Chrome Fined Nut | 15. Metal Washer (2) | 25. Shelf |
| 6. Escutcheon Base | 16. Nylon Anchor (2) | 26. Shower Arm |
| 7. Escutcheon Cover | 17. #4 x 1/2" Screw (10) | 27. Shower Body |
| 8. Thin Escutcheon (Optional) | 18. Cover Plate (2) | 28. Glue (1) |
| 9. Supply Line | 19. Hand Shower | 29. Adhesive Tape |
| 10. 2.5 GPM Flow Restrictor | 20. Hand Shower Holder | |

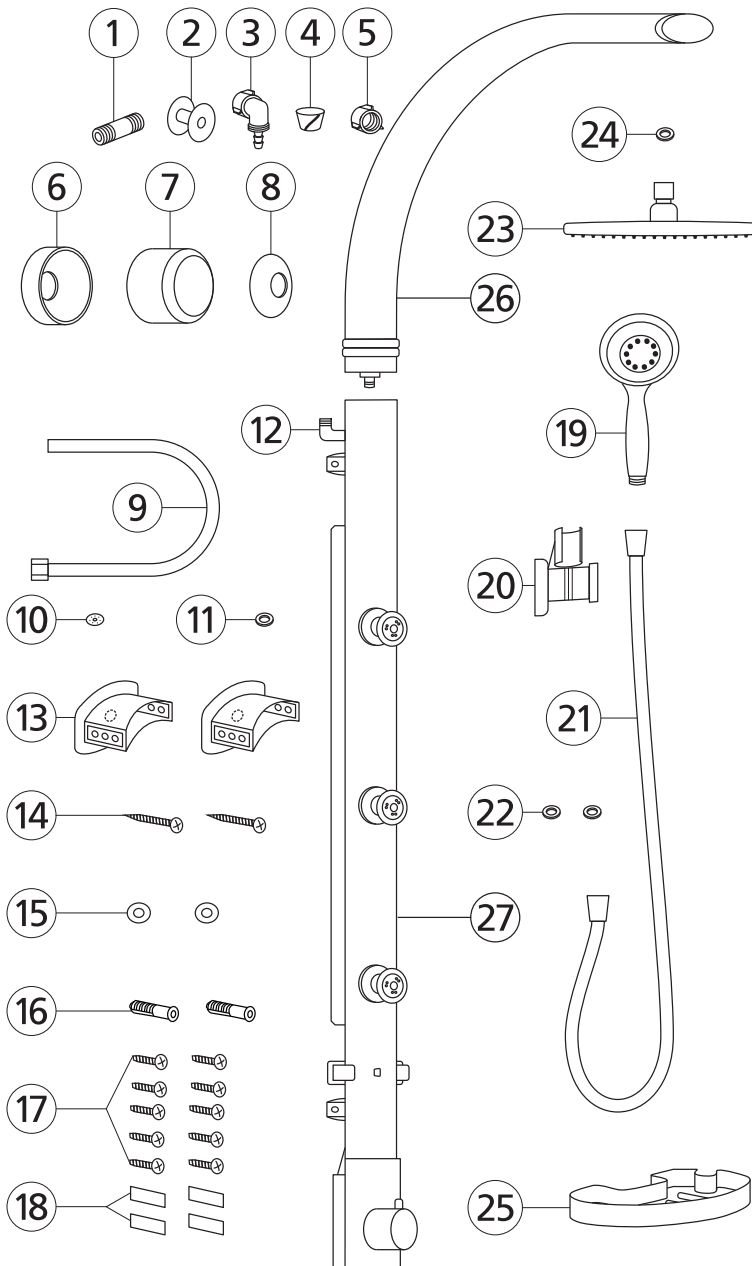


Figure A

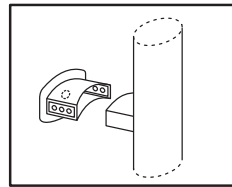


Figure B

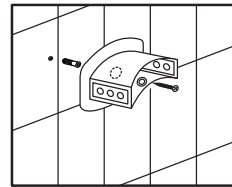


Figure B1

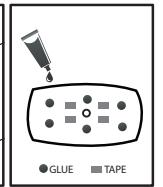


Figure C

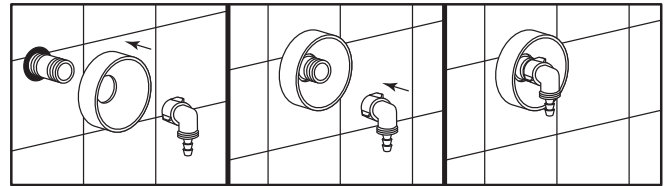


Figure D

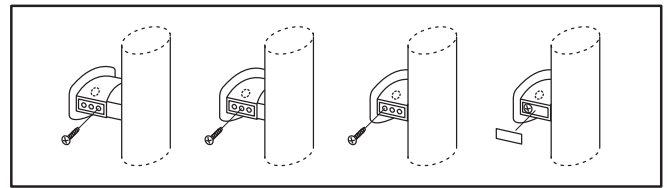
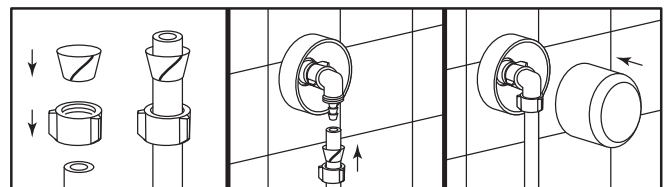


Figure E



Installation

Thank you for choosing the Bonzai Shower System by PULSE ShowerSpas!

Assembly and installation of the Bonzai Shower System is designed to be quick and easy. If you have installation questions or performance problems contact Customer Support at www.pulshowerspas.com.

Please read instructions carefully, become familiar with all parts, installation procedures and tools required. Follow the steps in the order presented to help avoid any mistakes.

FOR NEW CONSTRUCTION OR COMPLETE REMODEL

- A hot/cold mixing valve is required (NOT INCLUDED)
- Nipple should extend $\frac{1}{2}$ " past finished wall surface

FOR FIBERGLASS ENCLOSURES

IMPORTANT: PULSE does not recommend mounting through fiberglass wall surfaces without adequate wood or sheetrock backing! If mounting Bonzai to a fiberglass wall you must purchase appropriate mounting hardware (sold separately).

TOOLS REQUIRED

Philips screwdriver, adjustable wrench, level, pencil or marker, drill, $\frac{1}{4}$ " masonry/tile drill bit, hammer

INSTALLATION

1. Remove your showerhead and escutcheon (trim cover) from your existing shower arm. Leave shower arm in place.
2. Determine the length of brass NPT nipple (1, 1A) needed:
 - a. Place mark on existing shower arm at wall surface. Unscrew shower arm from elbow in wall.
 - b. Measure distance from mark on shower arm to end of shower arm threads. Add $\frac{1}{2}$ " to this measurement, and then round to nearest $\frac{1}{2}$ ".

Example 1: If measurement = $1\frac{1}{4}$ ", add $\frac{1}{2}$ " = $1\frac{3}{4}$ ", rounded = 2" NPT nipple—this is the length needed.

Example 2: If measurement = $1\frac{5}{8}$ ", add $\frac{1}{2}$ " = $2\frac{1}{8}$ ", rounded = 2" NPT nipple—this is the length needed.
- NOTE: If $\frac{1}{2}$ " X $1\frac{1}{2}$ " nipple (1) provided is not correct length based on above formula, you can attach one or both $\frac{3}{4}$ " nipple extensions (1A) to obtain desired length or it may be necessary to purchase required length $\frac{1}{2}$ " NPT brass nipple (available at most hardware stores in $\frac{1}{2}$ " incremental lengths).
3. Secure hand shower holder (20) to Bonzai with screws (17). Connect Shower Arm (26) to Shower Body (27) and secure with screws (17).
4. Apply a generous amount of PTFE (plumber's) tape (2) to both ends of nipple (1). Insert flow restrictor (10), then screened rubber washer (11) into hexagon fitting of supply line (9). Connect to 90° inlet (12) on backside of Bonzai body. DO NOT OVERTIGHTEN.
5. Slide mounts (13) over their male counterparts. [Figure A]
6. Hold Bonzai up to the wall and determine mounting location. Evaluate showerhead and body jet heights, making certain supply line (9) reaches nipple (1).
7. Use a level to check for vertical (plumb) position.

8. Mark the wall at top & bottom mounts (13) for reference.
9. Reposition mounts (13) to marks on wall. Mark the hole in the center of each mount.

FOR DRILL-FREE INSTALLATION:

POSITION/APPLY 4 ADHESIVE 3M TAPE (29) AND 6 DABS OF THE PROVIDED GLUE (28) (FIGURE B1), EVENLY DISTRIBUTING ON THE FLAT SURFACE OF THE MOUNT. PLACE THE MOUNT AGAINST THE WALL AND APPLY FIRM PRESSURE FOR 30 SECONDS. ALLOW MINIMUM 24 HOURS TO CURE BEFORE INSTALLING THE UNIT.

10. For solid surface walls (tile, marble, granite, etc.) use a masonry/tile bit and drill a $\frac{1}{4}$ " hole at center mark for each mount that is $1\frac{1}{2}$ " deep. BEWARE—Live Plumbing In Wall!
11. Insert nylon anchors (16) into the holes. [Figure B]
12. Secure mounts (13) to wall with mounting screws (14) and metal washers (15). DO NOT OVERTIGHTEN. [Figure B]
13. Remove tape backing on escutcheon base (6), slide over nipple (1) and attach to wall. [Figure C]
- NOTE: Optional thin escutcheon (8) is for installations where the ABS escutcheon (6,7) interferes with desired mounting height of Bonzai. For best look with thin escutcheon (8), nipple should not extend more than $\frac{3}{4}$ " from wall surface.
14. Secure chrome 90° w/ cone washer (3) to nipple (2). DO NOT OVERTIGHTEN. [Figure C]
- NOTE: Cone washer is already installed on chrome 90° (3).
15. Insert Bonzai into wall mounts.
16. Determine length of supply line (9). Supply line must install completely over barbed portion of 90° connector (3). To shorten, remove Bonzai from wall, cut supply line with sharp utility knife and re-insert Bonzai into wall mounts.
17. Secure Bonzai to wall mounts (13) with screws (17). Choose holes that set Bonzai at desired distance from the wall. [Figure D]
18. Insert cover plates (18) into side of mounts (13). [Figure D]
19. Slide chrome finned nut (5), then tapered plastic washer (4) over supply line (9). Refer to Figure E for proper positioning.
20. Push hose onto barbed portion of chrome 90° (3). Slide tapered plastic washer (4) over barbs and secure with chrome finned nut (5). DO NOT OVERTIGHTEN. [Figure E]
- HINT: Apply small amount of liquid soap to help hose slide onto barbed connection.
21. Push escutcheon cover (6) into base plate (1). [Figure E]
23. Insert 4mm rubber washer (22) into each end of hand shower hose (21). Secure to Bonzai and hand shower (19).
24. Insert 6mm rubber washer (24) into showerhead (23) and securely tighten to Bonzai. DO NOT OVERTIGHTEN.
25. Carefully insert shelf (25) into mounting bracket until tabs lock in place. Secure shelf to Bonzai with screw (17).

Care and Maintenance

The arched shower arm pivots from side to side.

Turn diverter either direction to change functions or set between functions for further enjoyment.

Turn face of hand shower to switch settings.

Adjust the hand shower position by loosening the knob on the hanger and rotating forward or back.

Always turn cold water on first to help prevent any accidental burning or scalding; especially for children and elderly.

The Bonzai is equipped with Spray-Straight™ technology in the tips of the showerhead and hand shower. If the stream becomes obstructed from mineral deposits, simply rub the soft tips with your finger to loosen deposits.

To remove debris from flow restrictor, unscrew supply line from backside of Bonzai. Take out screened washer and restrictor from inside the nut. Use a toothpick or rinse with water to remove debris.

To keep your ShowerSpa looking new, wipe down after each use with soft cotton cloth.

Protect your ShowerSpa from hard water stains and mineral deposits by periodically using an auto spray wax.

Clean using mild liquid soap and a non-abrasive sponge or cloth. Rinse with clean water.

**Do Not Use Any Kind Of
Chemicals Or Abrasives!**

MANUFACTURER'S LIFETIME LIMITED WARRANTY

1. Defects Covered; Warranty Period. Pulse Shower Spas, Inc. ("Pulse") warrants to the original consumer purchaser who purchases this shower spa (the "Product") for use in his or her own home, that the Product will be free from defects in material and manufacturing workmanship for as long as the original consumer purchaser owns that same home. For all other purchasers (including, but not limited to purchasers for industrial, commercial and business use), the above warranty will apply for a period of 5 years from the original date of purchase.

2. Remedy. If the Product does not conform to the above warranty, Pulse, at its option, will repair or replace the Product, free of charge, or refund your purchase price. For warranty claims, please visit www.pulshowerspas.com/index.php/warranty. Pulse may require that you return the Product to Pulse, shipping prepaid, in which case Pulse will provide you with a return materials authorization number (RMA). Pulse may also require that you provide evidence of the date you purchased the Product. Pulse will ship a new or repaired Product to you, at the expense of Pulse, or refund your purchase price. Service labor performed by you or others in connection with the removal or replacement of the Product will not be reimbursed by Pulse.

3. Exclusions. Pulse shall not be responsible for failure of the Product, and the above warranties will not apply, if the Product fails as a result of improper installation, improper use, modifications or repairs by anyone other than Pulse, or accident or abuse (including damage during shipment).

4. Warranty on Repairs and Replacements. For consumer purchasers who purchased the Product for home use, repaired or replacement Products will continue to be covered under this warranty for as long as he or she owns that same home. For other purchasers, repaired or replacement Products will be covered for the balance of the original warranty period.

5. No Other Warranties; Limitation of Liability. OTHER THAN THE LIFETIME LIMITED WARRANTY STATED ABOVE, PULSE DISCLAIMS ALL OTHER WARRANTIES, EXPRESS OR IMPLIED, INCLUDING BUT NOT LIMITED TO WARRANTIES OF MERCHANTABILITY AND FITNESS FOR A PARTICULAR PURPOSE, TO THE EXTENT PERMITTED BY APPLICABLE LAW. THE REMEDIES STATED ABOVE ARE YOUR SOLE REMEDIES IN CONNECTION WITH THIS WARRANTY. IN NO EVENT WILL PULSE BE LIABLE TO YOU FOR ANY DAMAGES, WHETHER DIRECT, INDIRECT, INCIDENTAL, SPECIAL OR CONSEQUENTIAL, INCLUDING BUT NOT LIMITED TO LOST PROFITS OR BUSINESS INTERRUPTION, ARISING OUT OF OR RELATING TO THE PRODUCT OR ITS USE, WHETHER UNDER A CONTRACT, WARRANTY, TORT, OR ANY OTHER CAUSE OF ACTION, EVEN IF PULSE HAS BEEN ADVISED OF THE POSSIBILITY OF SUCH DAMAGES. NOTWITHSTANDING THE TERM OF ANY LIMITED OR IMPLIED WARRANTY, OR IN THE EVENT THAT ANY LIMITED WARRANTY FAILS OF ITS ESSENTIAL PURPOSE, IN NO EVENT WILL PULSE'S ENTIRE LIABILITY EXCEED THE PURCHASE PRICE OF THE PRODUCT. SOME STATES AND PROVINCES DO NOT ALLOW THE EXCLUSION OR LIMITATION OF INCIDENTAL OR CONSEQUENTIAL DAMAGES SO THE ABOVE LIMITATIONS OR EXCLUSIONS MAY NOT APPLY TO YOU. THIS LIMITED WARRANTY GIVES YOU SPECIFIC LEGAL RIGHTS, AND YOU MAY ALSO HAVE OTHER RIGHTS WHICH VARY FROM STATE TO STATE AND PROVINCE TO PROVINCE.

