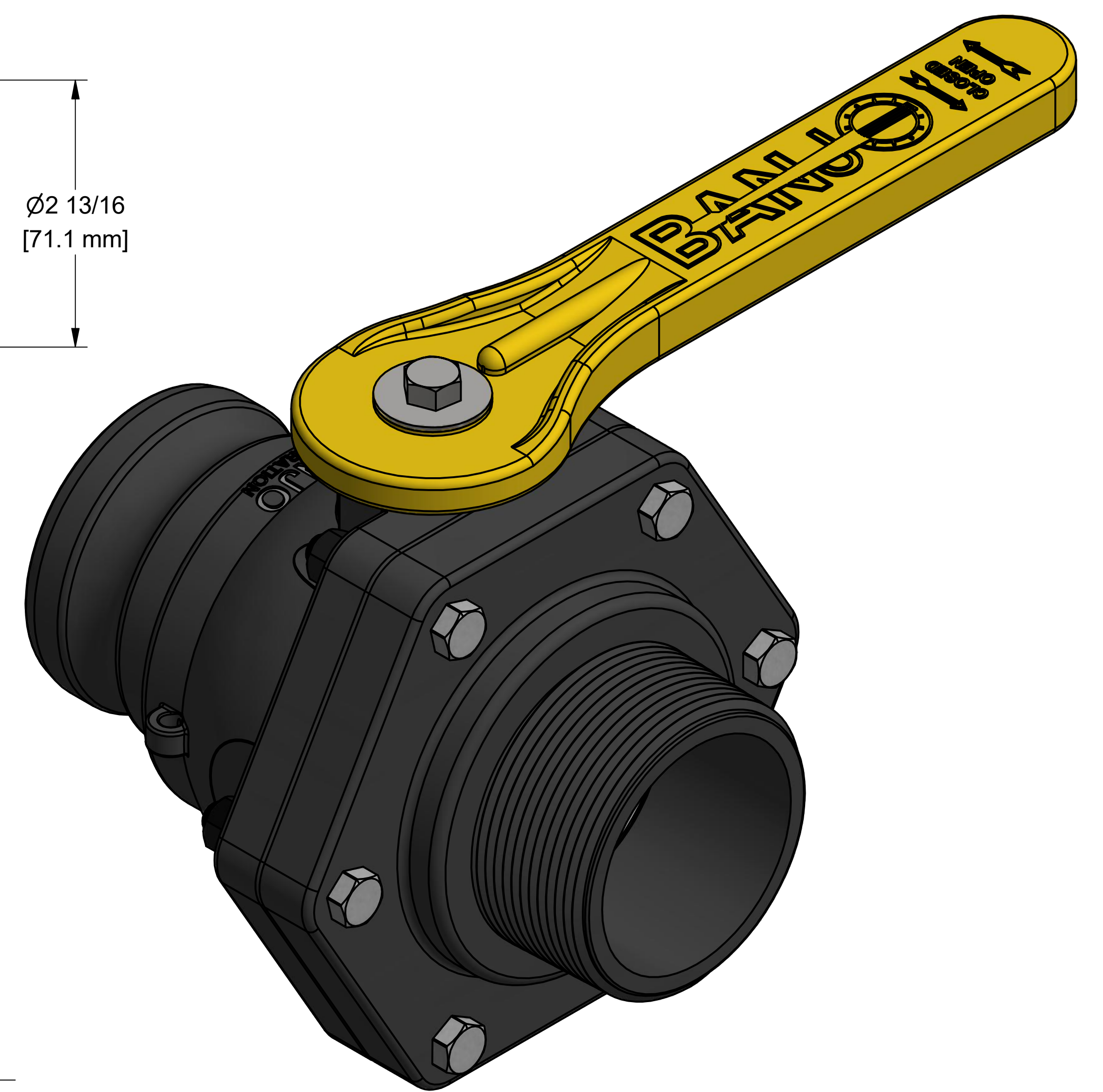
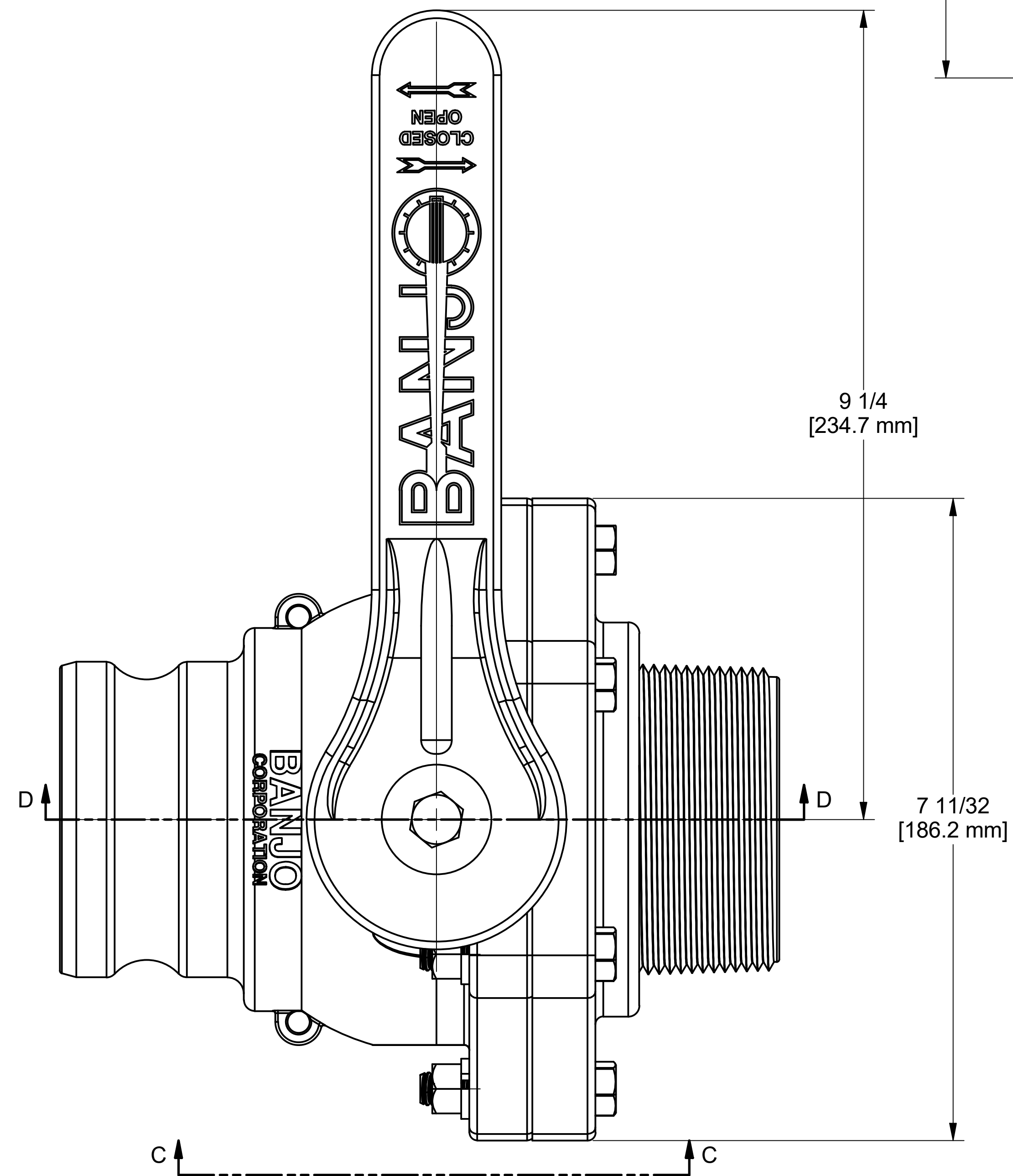
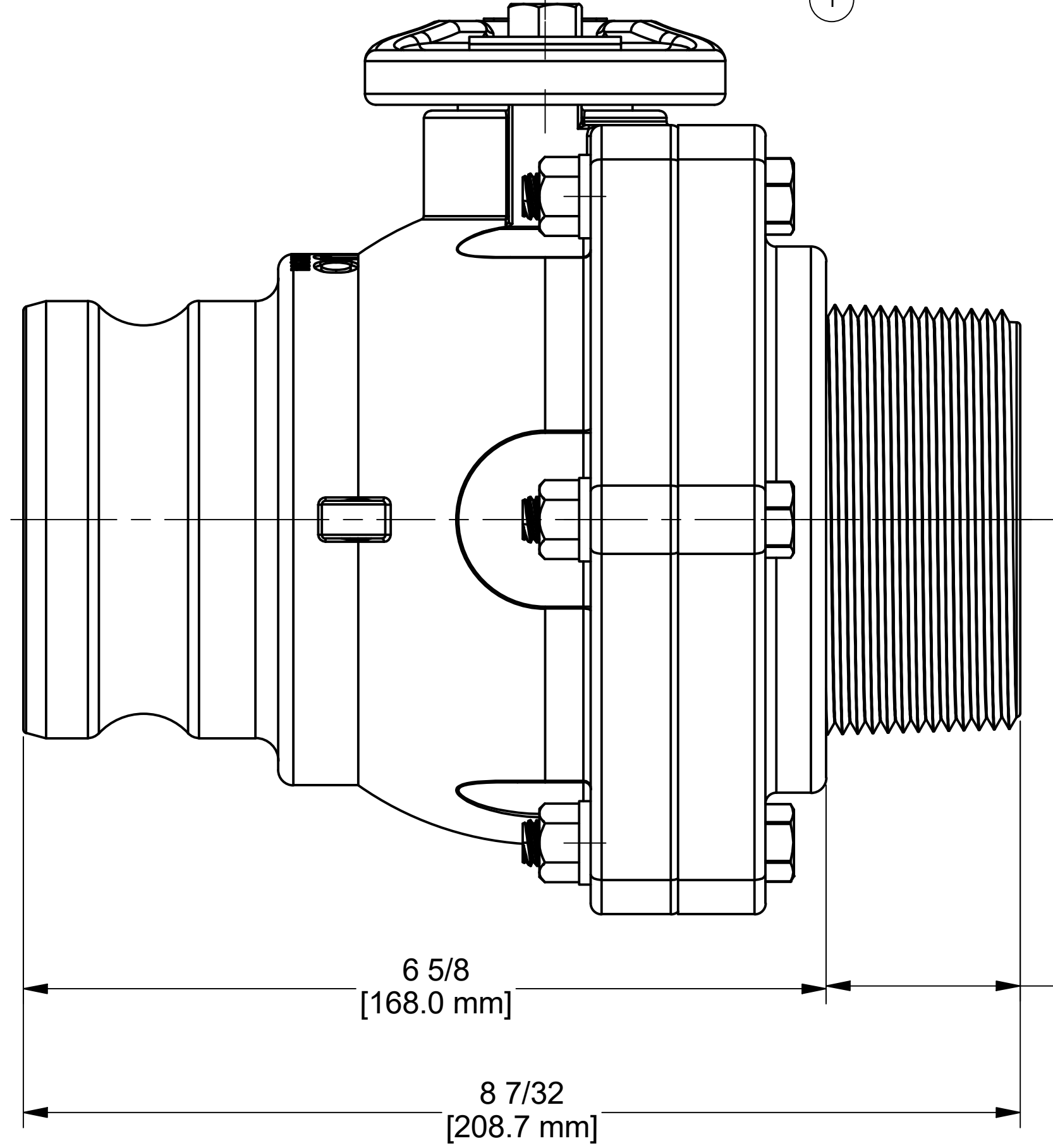
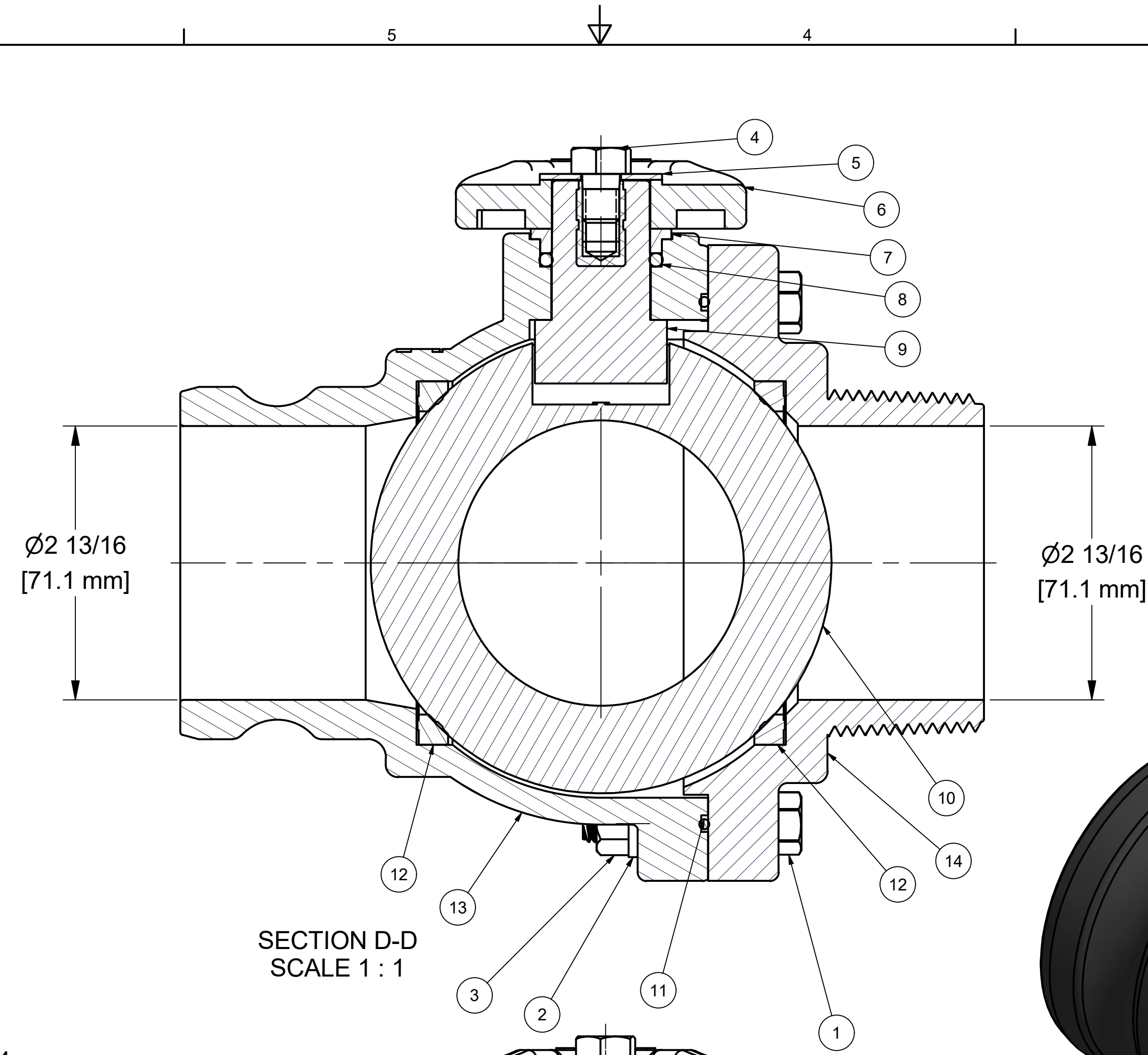


PARTS LIST			
ITEM	QTY	PART NUMBER	DESCRIPTION
1	6	V20010SS	3/8-16 X 2" HHCS
2	6	V20018	3/8" LOCKWASHER
3	6	V20019	3/8" HEX NUT
4	1	V25020	3/8" Handle Bolt
5	1	V25121	3/8" Fender Washer
6	1	V25153	2" FP Handle
7	1	V25160	Stem Bushing
8	1	V25163	AS568A -214 O-RING, FKM, BROWN
9	1	V30151B	STEM 3" & 4" STUBBY, MACHINED
10	1	V35255A	3" FULL PORT BALL, TUMBLED
11	1	V35265	AS568A -160 O-RING, FKM, BROWN
12	2	VS35258	3" FP Stubby Valve Seat
13	1	VSF35254	3" FP STUBBY F BODY, MACHINED
14	1	VSMT35256	3" FP MNPT STUBBY ENDPLATE, MACHINED



THIS DRAWING AND ALL INFORMATION CONTAINED THEREON ARE THE EXCLUSIVE PROPERTY OF BANJO CORPORATION.

UNLESS SPECIFICALLY NOTED, THIS DRAWING AND ITEMS SHOWN ON THIS DRAWING ARE SUBJECT TO CHANGE AT ANY TIME.

BANJO CORPORATION  
150 BANJO DRIVE, CRAWFORDSVILLE, IN 47933  
WEB SITE: WWW.BANJO.CORP.COM  
E-MAIL: BANJOSALES@DEXCORP.COM

DESCRIPTION  
3" MLE ADPT X 3" MLE NPT FP STBY VLV

PART NUMBER  
VSFMT300FP