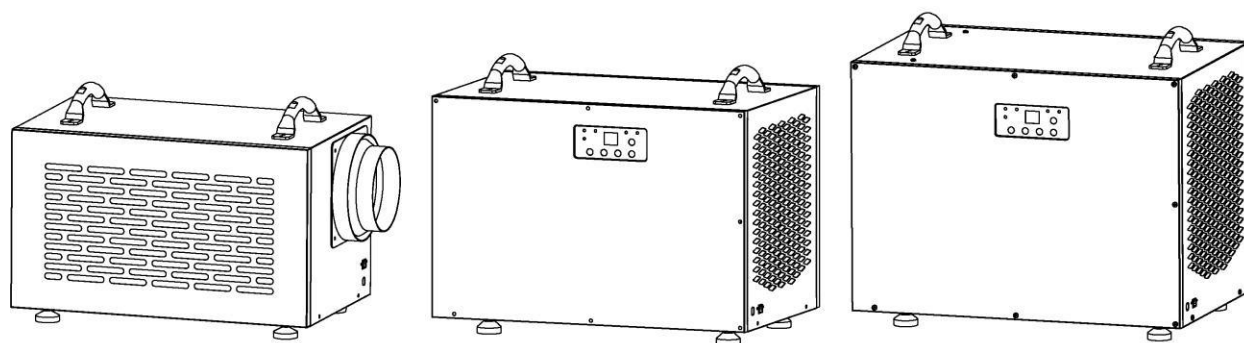


NAMCO

DEHUMIDIFIER

RW-95, RW-150, RW-190

User's Manual



CONTENT

Installation Requirements.....	1
Installation.....	1
Part List.....	2
Keys and Display Symbols.....	3
Remote Control.....	4
Maintenance.....	5
Important Instructions.....	6
Specifications.....	7
Error Messages.....	7
Error Analysis.....	8

Installation Requirements

The area where the dehumidifier is located should be sealed with a vapor barrier.

If the unit is installed in a crawl space, all vents should be sealed.

For the best air diffusion, install the unit so that a side panel faces the wall.

For proper ventilation, neither the inlet nor discharge should be positioned against a wall. The inlet needs a minimum of 12" clearance and the discharge requires a minimum of 36" clearance.

The dehumidifiers are only intended for operation when the unit is upright and level with the feet on the ground.

Installation

1. Place your dehumidifier on a flat surface,

- Avoid putting it against a vapor barrier. Don't use anything to support it at the base. Place it on the floor. If your device was placed in any other position other than upright place it upright and allow two hours before turning it on.

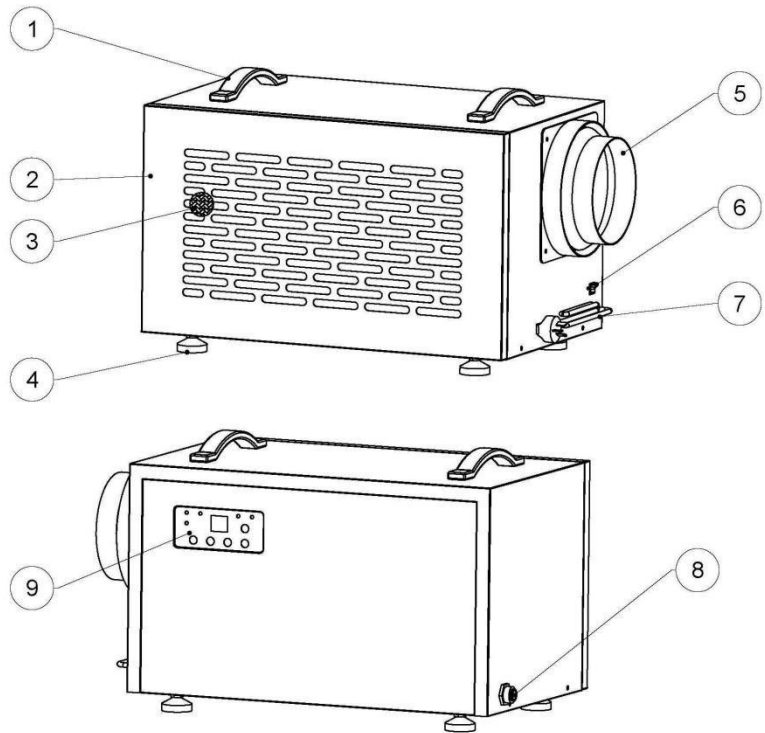
2. Arrange the line of drainage

- Route the drain hose to a suitable drainage outside.
- There should not be any loops or dips on the drainage hose.
- Seal off the point where the dehumidifier is located using a vapor barrier.
- Seal off all openings if the unit is installed in a crawl space.
- Avoid placing the inlet and outlet against a wall. This ensures proper ventilation. You need to give a 12" allowance of space with the inlet and 36" clearance for the discharge.
- Place the side panel facing the wall so that the dehumidifier delivers the best diffusion.
- Your dehumidifier is designed to be placed on the ground at the same level with the feet. Place it upright.
- Maintenance should be conducted with the power switched off or unplugged.

Part List

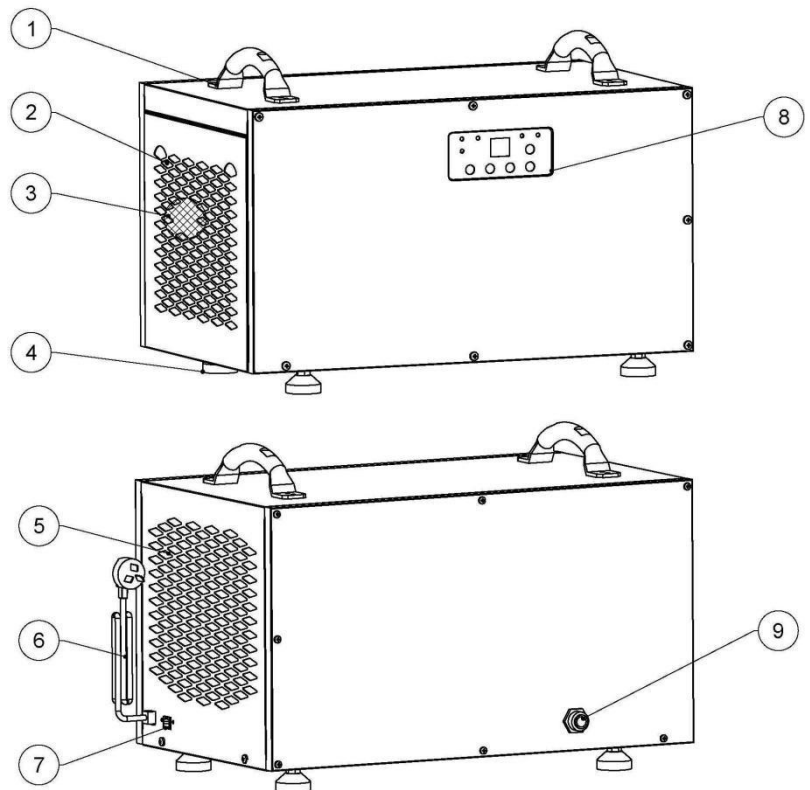
RW-95

1. Handle
2. Air inlet
3. Filter screen
4. Support foot
5. Air outlet
6. Controller cable interface
7. Power cord
8. Drainage
9. Display/ Screen

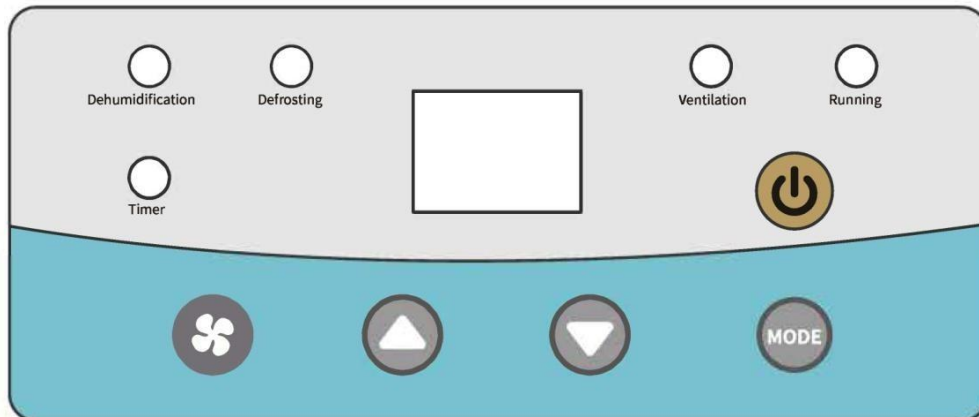


RW-150, RW-190

1. Handle
2. Air inlet
3. Filter screen
4. Support foot
5. Air outlet
6. Controller cable interface
7. Power cord
8. Drainage
9. Display/ Screen



Keys and Display Symbols



Functions of Keys:



Use this button to turn the dehumidifier on and off.

Please note that there is a 1 minute fan delay.



Use the up and down arrows to set the desired humidity set point on the display screen or timing shutdown time.

When set desired humidity set point, the set point can be any number between 10%-99%.

When set timing shutdown time, the set point can be 00-23.



Each short press of the setting button: Set humidity value, set dehumidification/ventilation mode, set timing on/off time, and exit.

Function Description:

Adjust the wind speed: short press the wind speed button to adjust.

Adjust the set humidity value: short press the mode button, the position of the humidity set value will flash, press the up and down keys to adjust.

Ventilation/dehumidification mode setting: Short press the M key twice, press the up and down keys to switch modes.

Set the delay switch time: short press the mode button 3 times to enter the delayed power-on time (display on) setting, press the up and down keys to adjust, short press the mode key 4 times to enter the delayed power-off time (display off) setting, press

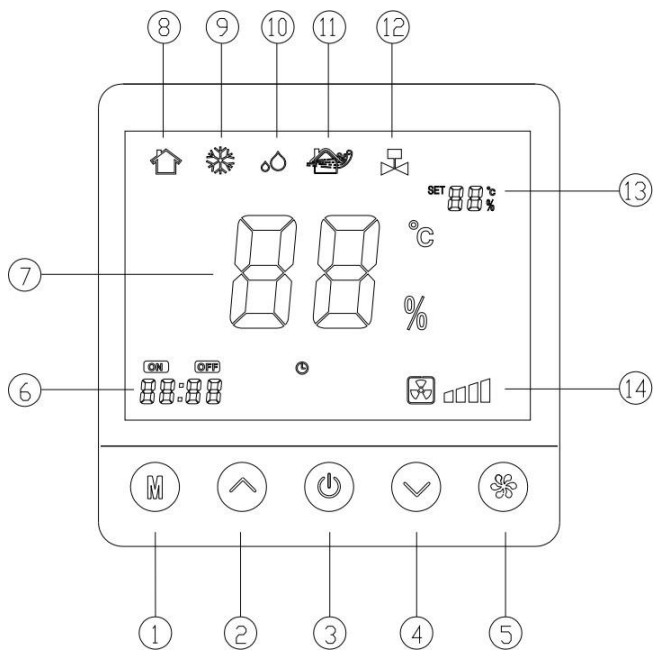
Up and down keys to adjust.

Remote Control Instructions (Optional)

Dehumidifiers can be controlled using **optional** remote accessories, Option 1. Wall mounted controller connecting 25'CAT 5 cable; Option 2. Remote control.

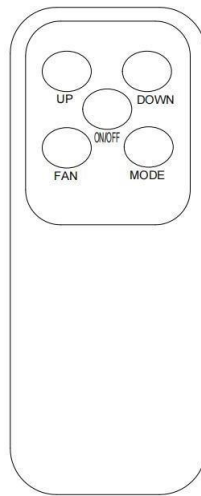
If your dehumidifier is installed in your crawl space, the wall mounted controller could be mounted in your living space or garage. This provides you with an easy way to monitor the dehumidifier. So as the remote control, you can operate the device in a distance.

Wall Mounted Controller View



No.	Description
1	M key (Mode Key)
2	Up key
3	Power key
4	Down key
5	Wind speed key
6	Delay switch display area
7	Ambient humidity display area
8	Boot icon
9	Defrost icon
10	Dehumidification icon
11	Ventilation icon
12	Water pump on icon
13	Set the humidity display area
14	Wind speed display area

Remote Control View



Remote control operates in the same way as on-device controllers and wall mounted controller.

Automatic Defrosting Function

At low temperatures the device will start defrosting automatically. During this period the cooling fan works properly but the inserted compressor switches itself off. The Defrosting indicator light will illuminate red.

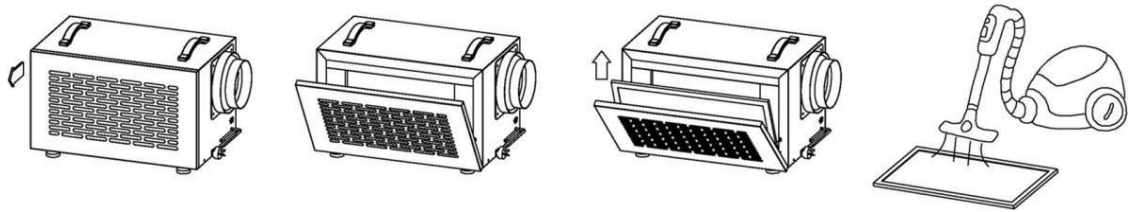
Maintenance

WARNING: Always unplug the unit before doing any maintenance.

Cleaning the Machine Body

- Use a soft, damp cloth to clean the exterior of unit. Do not use any soap or solvents.

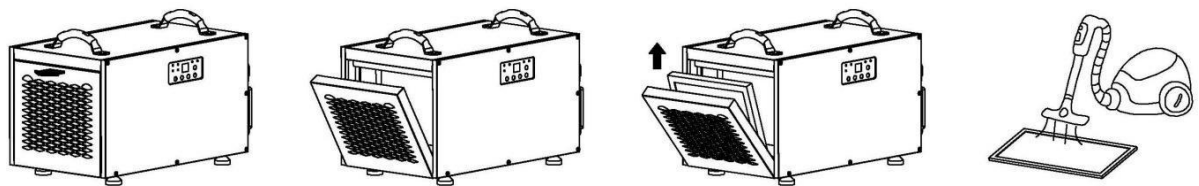
Change the Filter RW-95



1. Unplug the unit.
2. The air inlet plate is held by a magnet, open the air inlet plate as shown in the picture and take out the filter.
3. Please vacuum or replace the filter.

Filter needs changed every 1500 hours of use.

Change the Filter RW-150, RW-190



1. Unplug the unit.
2. Unscrew the two hand-twist locks counterclockwise;
3. Remove the filter cover;
4. Pull out the filter;
5. Please vacuum or replace the filter.

Filter needs changed every 1500 hours of use.

Important Instructions

- The compressor turns itself on three minutes after turning on the dehumidifier.
- When the device defrosts the cooling fan works properly but the inserted compressor switches itself off.
- Filter needs changed every 1500 hours of use.
- Leave a safe distance between wall and air in- and outlets.

- Unplug the device and attach the mains plug to the product if it is not in use over a longer period.
- Don't tilt the device more than 45°, neither when moving nor when operating.
- If the dehumidifier was tilted by accident, don't use it for a period of 12 hours.

Specifications

Model	RW-95	RW-150	RW-190
Min./Max. temperature	41°F -95°F	41°F -95°F	41°F -95°F
Dehumidification capacity (86°F , 80%RH)	95 Pints/D	150 Pints/D	190 Pints/D
Voltage	AC110-125 V ~ 60 Hz	AC110-125 V ~ 60 Hz	AC110-125 V ~ 60 Hz
Power	380W	520W	820W
Refrigerant	R410A	R410A	R410A
Air volume	280m3/h	400m3/h	550m3/h
Max. discharge pressure	4.5Mpa	4.5Mpa	4.5Mpa
Max. suction pressure	1.2Mpa	1.2Mpa	1.2Mpa
Drainage way	Water Pump	Water Pump	Water Pump

Error Messages

ERROR	REASON	SOLUTION
E1	Coil Sensor-Error	Exchange the coil sensor
E2	Moisture Sensor-Error	Exchange the moisture sensor
E3	Temperature Sensor-Error	Exchange the temperature sensor

*** If an error occurs, display will show the respective code.**

Error Analysis

ERROR	ERROR	SOLUTION
Dehumidifier does not work.	<ol style="list-style-type: none"> 1. Device has no power. 2. Mains plug is not plugged in properly. 3. Display shows error code E4. 	<ol style="list-style-type: none"> 1. Turn on the power supply. 2. Connect the mains plug properly. 3. Empty the water collection container.
Bad Dehumidification Performance	<ol style="list-style-type: none"> 1. Air in- or outlet is covered. 2. Room is not closed. Low moisture and temperature. 	<ol style="list-style-type: none"> 1. Uncover Air in- and outlet. 2. Close all doors and windows. 3. The lower the room temperature the worse the dehumidification performance.
High Noise Level	<ol style="list-style-type: none"> 1. Device was not put on even ground. 2. Air in- or outlet is covered. 	<ol style="list-style-type: none"> 1. Position the device on even ground. 2. Uncover Air in- and outlet.