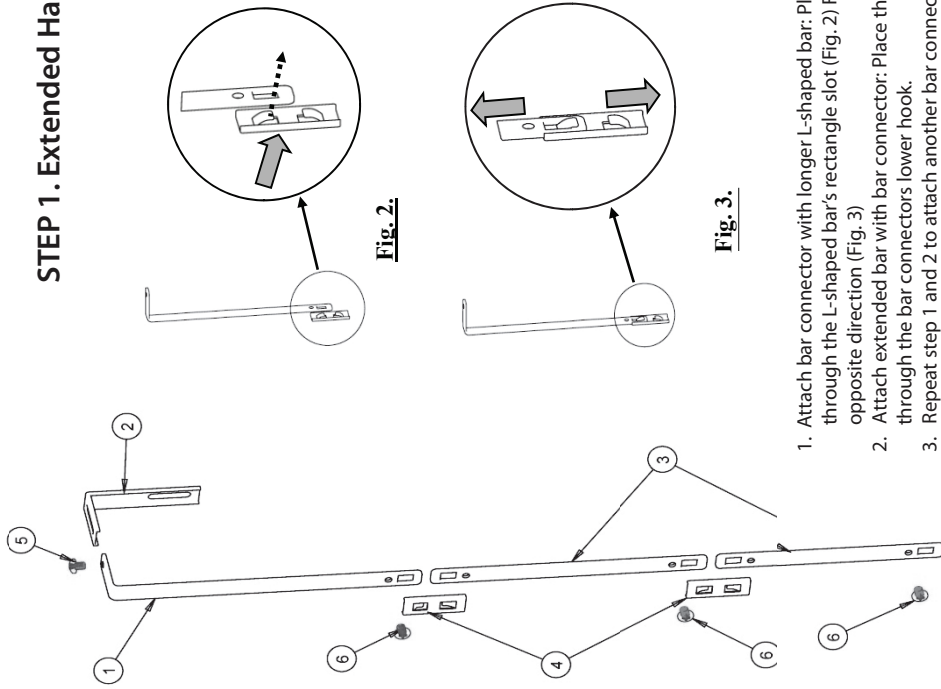


# Recycled Cubicle File, 3-Pocket with Hangers (UNV08163) Assembly Instructions

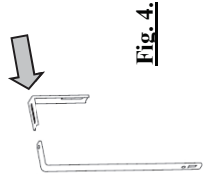
## STEP 1. Extended Hanger Set Assembly



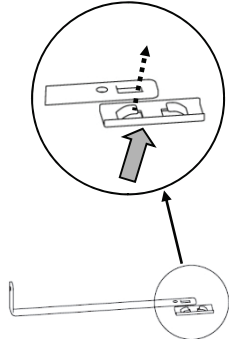
**Fig. 1.**

## STEP II. Cubicle File Pockets and Extended Hanger Set Assembly

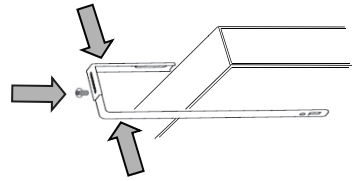
1. Adjust the distance of two hanger sets using the distance of two keyholes in the file pocket (Fig. 6.).
2. For both hanger sets, attach the supplied screws to L-shaped bars and extended bars at positions shown in Fig. 7. Adjust the gap between the screw head and the hangers to the appropriate thickness of the file pocket.
3. Attach three file pockets to the hanger sets from top to bottom.
4. Attach the 1<sup>st</sup> file pocket to one hanger set by placing the screw head through the keyhole shaped slot on the file pocket. Tighten the attachment by pulling file pocket downward so the screws head will fit in the narrow end of the slot (Fig. 8.). Repeat for the other hanger set. Tighten screws to securely attach file pocket onto both hanger sets.
5. Repeat step 4 to attach the 2<sup>nd</sup> and 3<sup>rd</sup> file pockets in the middle and bottom positions.



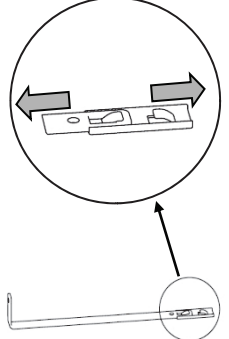
**Fig. 4.**



**Fig. 2.**

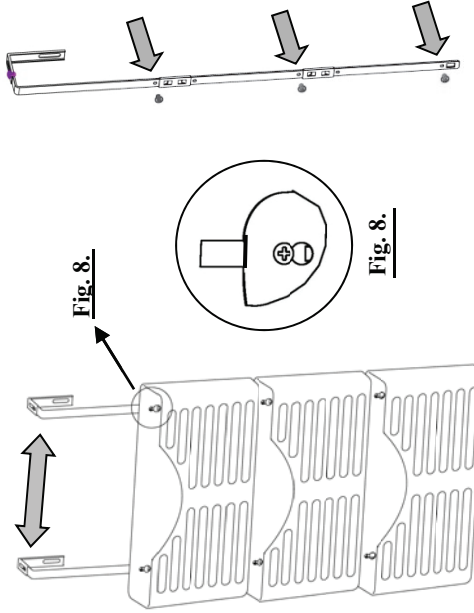


**Fig. 5.**

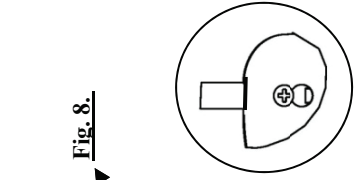


**Fig. 3.**

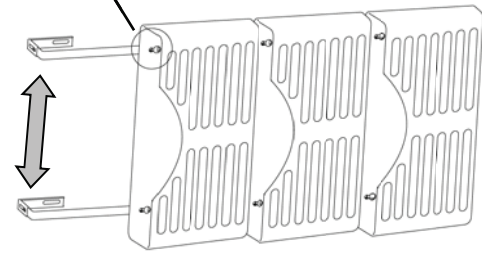
1. Attach bar connector with longer L-shaped bar: Place the bar connector's upper hook through the L-shaped bar's rectangle slot (Fig. 2) Fasten by pulling both parts in opposite direction (Fig. 3)
2. Attach extended bar with bar connector: Place the extended bar's rectangle slot through the bar connectors lower hook.
3. Repeat step 1 and 2 to attach another bar connector and extended bar
4. Loosen the pre-assembled screw on the L-shaped bar. Slide the mounting bracket into the L-shaped bar using the length best suited for the thickness of the wall panel (Fig. 4). Slide the assembled hanger over the wall panel and tighten the screws securely. (Fig. 5)
5. Repeat steps 1-4 for the second hanger set.



**Fig. 6.**



**Fig. 7.**



**Fig. 8.**

EXTENDED HANGER SET PART LIST (Fig. 1)			
ITEM	DESCRIPTION	QTY	REMARKS
1	L-SHAPED BAR	2 PCS	
2	MOUNTING BRACKET	2 PCS	
3	EXTENDED BAR	4 PCS	
4	BAR CONNECTOR	4 PCS	
5	SCREW 1	2 PCS	Pre-assembled with L-shaped bar
6	SCREW 2	2 PCS	In polybag



Manufactured for/ Hecho para  
 Fabriqué pour Universal®  
 USSCO, 1 Pkwy North,  
 Ste 100, Deerfield, IL 60015  
 © 2011 USSCO  
 Made in/ Hecho en/ Fabriqué en China