

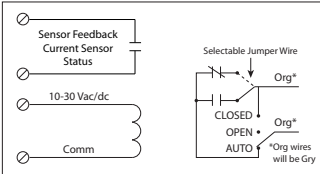
RELAY & AC CURRENT SWITCH COMBOS

RIBXLS Series

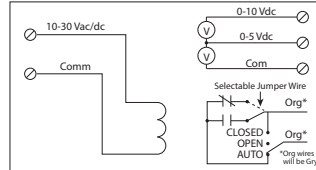
Enclosed Relay/AC Sensor Combinations, SPST + Override with 10-30 Vac/dc Coil



RIBXLSA, RIBXLSF, (RIBXLSEA*)+

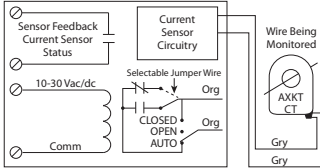


RIBXLSV, (RIBXLSEV*)^

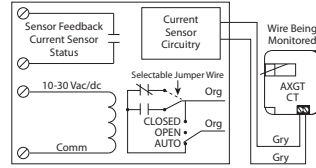


RIBXLSA

RIBXLSRA, RIBXLSRF+



RIBXLSJA, RIBXLSJF+



SPECIFICATIONS

FUNCTIONAL DEVICES CERTIFIED FOR USE WITH ECMs

- # Relays & Contact Type: One (1) SPST Continuous Duty Coil
- Expected Relay Life: 10 million cycles minimum mechanical
- Operating Temperature: -30 to 140° F
- Humidity Range: 5 to 95% (noncondensing)
- Operate Time: 20ms
- Relay Status: Red LED On = Activated
- Dimensions: 4.00" x 4.00" x 1.80" with .50" NPT Nipple
- Wire Length: 16", 600V Rated
- Approvals: UL Listed, UL916, UL864, C-UL California State Fire Marshal, CE, RoHS
- Housing Rating: UL Accepted for Use in Plenum, NEMA 1
- Gold Flash: Yes
- Override Switch: Yes

- Coil Current:**
 - 33 mA @ 10 Vac
 - 35 mA @ 12 Vac
 - 46 mA @ 24 Vac
 - 55 mA @ 30 Vac
 - 13 mA @ 10 Vdc
 - 15 mA @ 12 Vdc
 - 18 mA @ 24 Vdc
 - 20 mA @ 30 Vdc
- Coil Voltage Input:**
 - 10-30 Vac/dc ; 50-60 Hz
 - Drop Out = 2.1 Vac / 2.8 Vdc
 - Pull In = 9 Vac / 10 Vdc

- + Sensor Contact:**
 - When current sensor status is off (open), leakage <30 uA @ 30Vac/dc
 - When current sensor status is on (closed), voltage drop < .3 Vac/dc @ .1 Amp
 - < 1.6 Vac/dc @ .4 Amp
- ^ Sensor Feedback Output:**
 - Voltage output is proportional to current sensor range.
 - Min. Input Impedance = 30K ohms
 - Accuracy +/- 3% full scale
 - Vripple < 10m Vac
- Notes:**
 - Normally Open or Normally Closed selected by yellow jumper wire
 - Models AXKT and AXGT CT remotes do not have contact closure circuitry and only work in conjunction with RIBXLSR and RIBXLSJ models, respectively.

RIBXLS SERIES SELECTION GUIDE

Model#	Sensing Range	Type *	Threshold	Sensor Output	Remote Style	Resistive	Contact Ratings
RIBXLSF ECMs	.50-10 Amps	Internal w/ contact status	Fixed, .50 Amp	Solid State Contact 30 Vac/dc, 0.4 Amp		10 Amp	10 Amp Resistive @ 277 Vac 480 VA Pilot Duty @ 277 Vac 480 VA Ballast @ 277 Vac
RIBXLSA ECMs	.50-10 Amps	Internal w/ contact status	Adjustable	Solid State Contact 30 Vac/dc, 0.4 Amp		10 Amp	<i>Not rated for Electronic Ballast</i> 600 Watt Tungsten @ 120 Vac (N/O) 240 Watt Tungsten @ 120 Vac (N/C) 1/3 HP @ 120-240 Vac (N/O) 1/6 HP @ 120-240 Vac (N/C) 1/4 HP @ 277 Vac (N/O) 1/8 HP @ 277 Vac (N/C)
RIBXLSV	0-10 Amps	Internal w/ voltage output	Analog	0-5 Vdc 0-10 Vdc		10 Amp	
RIBXLSRF ECMs	1.25-150 Amps	External w/ contact status	Fixed, 1.25 Amp	Solid State Contact 30 Vac/dc, 0.4 Amp	Model AXKT: (Solid Core Remote)	10 Amp	
RIBXLSRA ECMs	1.25-150 Amps	External w/ contact status	Adjustable	Solid State Contact 30 Vac/dc, 0.4 Amp	Model AXKT: (Solid Core Remote)	10 Amp	
RIBXLSJF ECMs	3-150 Amps	External w/ contact status	Fixed, 3 Amp	Solid State Contact 30 Vac/dc, 0.4 Amp	Model AXGT: (Split Core Remote)	10 Amp	
RIBXLSJA ECMs	3-150 Amps	External w/ contact status	Adjustable	Solid State Contact 30 Vac/dc, 0.4 Amp	Model AXGT: (Split Core Remote)	10 Amp	
RIBXLSEA	.125-5 Amps	Internal w/ contact status	Adjustable	Solid State Contact 30 Vac/dc, 0.4 Amp		5 Amp	5 Amp Resistive @ 277 Vac 345 VA Pilot Duty @ 120/240 Vac (N/O) 268 VA Pilot Duty @ 277 Vac (N/O) 211 VA Pilot Duty @ 120/240 Vac (N/C) 175 VA Pilot Duty @ 277 Vac (N/C) 1/3 HP @ 120-240 Vac (N/O) 1/6 HP @ 120-240 Vac (N/C) 1/4 HP @ 277 Vac (N/O) 1/8 HP @ 277 Vac (N/C)
RIBXLSEV	0-5 Amps	Internal w/ voltage output	Analog	0-5 Vdc 0-10 Vdc		5 Amp	

* = Internal current sensor monitors current through common contact of relay. **ECMs** = FDI Certified for use with electronically commutated motors