

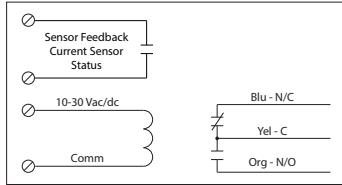
**RELAY & AC CURRENT SWITCH COMBOS**

**RIBXLC Series**

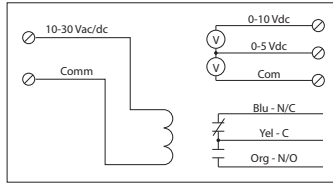
Enclosed Relay/AC Sensor Combinations, SPDT with 10-30 Vac/dc Coil



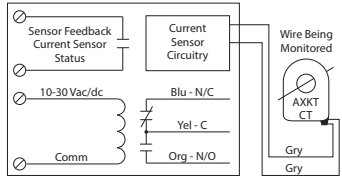
**RIBXLCRA, RIBXLCRF+**



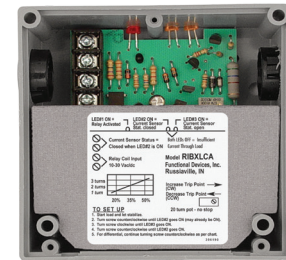
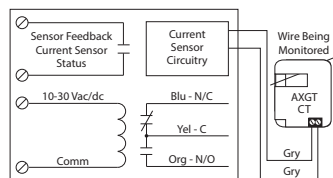
**RIBXLCV, RIBXLCEV^**



**RIBXLCRA, RIBXLCRF+**



**RIBXLCJA, RIBXLCJF+**



RIBXLCRA

**SPECIFICATIONS**

**FUNCTIONAL DEVICES CERTIFIED FOR USE WITH ECMs**

- # Relays & Contact Type: One (1) SPDT Continuous Duty Coil
- Expected Relay Life: 10 million cycles minimum mechanical
- Operating Temperature: -30 to 140° F
- Humidity Range: 5 to 95% (noncondensing)
- Operate Time: 20ms
- Relay Status: Red LED On = Activated
- Dimensions: 4.00" x 4.00" x 1.80" with .50" NPT Nipple
- Wire Length: 16", 600V Rated
- Approvals: UL Listed, UL916, UL864, C-UL California State Fire Marshal, CE, RoHS UL Accepted for Use in Plenum, NEMA 1
- Housing Rating: Gold Flash: Yes
- Override Switch: No

- Coil Current:
  - 33 mA @ 10 Vac
  - 35 mA @ 12 Vac
  - 46 mA @ 24 Vac
  - 55 mA @ 30 Vac
  - 13 mA @ 10 Vdc
  - 15 mA @ 12 Vdc
  - 18 mA @ 24 Vdc
  - 20 mA @ 30 Vdc

- Coil Voltage Input:
  - 10-30 Vac/dc ; 50-60 Hz
  - Drop Out = 2.1 Vac / 2.8 Vdc
  - Pull In = 9 Vac / 10 Vdc

- + Sensor Contact:
  - When current sensor status is off (open), leakage <30 uA @ 30Vac/dc
  - When current sensor status is on (closed), voltage drop < .3 Vac/dc @ .1 Amp
  - < 1.6 Vac/dc @ .4 Amp
- ^ Sensor Feedback Output:
  - Voltage output is proportional to current sensor range.
  - Min. Input Impedance = 30K ohms
  - Accuracy +/- 3% full scale
  - Vripple < 10m Vac

- Notes:
  - Models AXKT and AXGT CT remotes do not have contact closure circuitry and only work in conjunction with RIBXLCR and RIBXLCJ models, respectively.

**RIBXLC SERIES SELECTION GUIDE**

Model#	Sensing Range	Type *	Threshold	Sensor Output	Remote Style	Resistive	Contact Ratings
RIBXLCF <b>ECMs</b>	.50-10 Amps	Internal w/ contact status	Fixed, .50 Amp	Solid State Contact 30 Vac/dc, 0.4 Amp		10 Amp	10 Amp Resistive @ 120-277 Vac 10 Amp Resistive @ 28 Vdc 480 VA Pilot Duty @ 240-277 Vac 480 VA Ballast @ 277 Vac <i>Not rated for Electronic Ballast</i> 600 Watt Tungsten @ 120 Vac (N/O) 240 Watt Tungsten @ 120 Vac (N/C) 1/3 HP @ 120-240 Vac (N/O) 1/6 HP @ 120-240 Vac (N/C) 1/4 HP @ 277 Vac (N/O) 1/8 HP @ 277 Vac (N/C)
RIBXLCRA <b>ECMs</b>	.50-10 Amps	Internal w/ contact status	Adjustable	Solid State Contact 30 Vac/dc, 0.4 Amp		10 Amp	
RIBXLCV	0-10 Amps	Internal w/ voltage output	Analog	0-5 Vdc 0-10 Vdc		10 Amp	
RIBXLCRF <b>ECMs</b>	.25-150 Amps	External w/ contact status	Fixed, 1.25 Amp	Solid State Contact 30 Vac/dc, 0.4 Amp	Model AXKT: (Solid Core Remote CT)	10 Amp	
RIBXLCRA <b>ECMs</b>	.25-150 Amps	External w/ contact status	Adjustable	Solid State Contact 30 Vac/dc, 0.4 Amp	Model AXKT: (Solid Core Remote CT)	10 Amp	
RIBXLCJF <b>ECMs</b>	3-150 Amps	External w/ contact status	Fixed, 3 Amp	Solid State Contact 30 Vac/dc, 0.4 Amp	Model AXGT: (Split Core Remote CT)	10 Amp	
RIBXLCJA <b>ECMs</b>	3-150 Amps	External w/ contact status	Adjustable	Solid State Contact 30 Vac/dc, 0.4 Amp	Model AXGT: (Split Core Remote CT)	10 Amp	
RIBXLCRA	.125-5 Amps	Internal w/ contact status	Adjustable	Solid State Contact 30 Vac/dc, 0.4 Amp		5 Amp	5 Amp Resistive @ 277 Vac 345 VA Pilot Duty @ 120/240 Vac (N/O) 268 VA Pilot Duty @ 277 Vac (N/O) 211 VA Pilot Duty @ 120/240 Vac (N/C) 175 VA Pilot Duty @ 277 Vac (N/C) 1/3 HP @ 120-240 Vac (N/O) 1/6 HP @ 120-240 Vac (N/C) 1/4 HP @ 277 Vac (N/O) 1/8 HP @ 277 Vac (N/C)
RIBXLCEV	0-5 Amps	Internal w/ voltage output	Analog	0-5 Vdc 0-10 Vdc		5 Amp	

\* = Internal current sensor monitors current through common contact of relay.

**ECMs** = FDI Certified for use with electronically commutated motors