

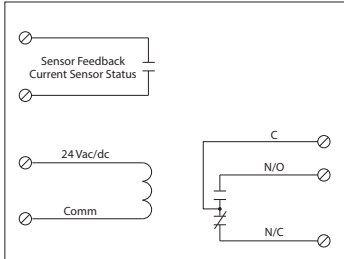
RELAY & AC CURRENT SWITCH COMBOS

RIBMX24 Series

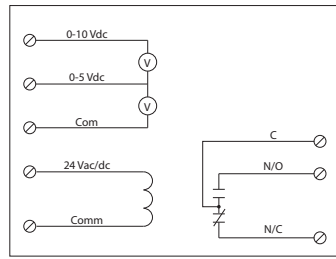
4.00" Track Mount 20 Amp Relay/AC Sensor Combinations, with 24 Vac/dc Coil



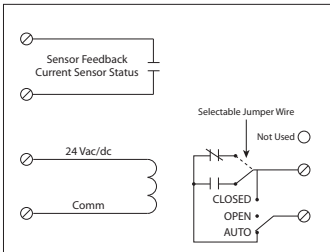
RIBMX24BA, RIBMX24BF+



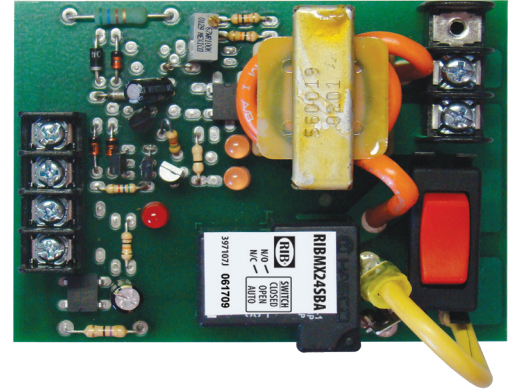
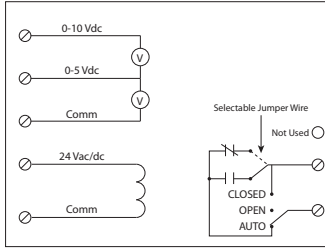
RIBMX24BV^



RIBMX24SBA, RIBMX24SBF+



RIBMX24SBV^



SPECIFICATIONS

FUNCTIONAL DEVICES CERTIFIED FOR USE WITH ECMs

- Expected Relay Life:** 10 million cycles minimum mechanical
- Operating Temperature:** -30 to 140° F
- Humidity Range:** 5 to 95% (noncondensing)
- Operate Time:** 18ms
- Relay Status:** Red LED On = Activated
- Dimensions:** 2.95" x 4.00" x 1.25"
- Track Mount:** 4.000", MT4 Mounting Track Sold Separately
- Approvals:** UL Listed, UL916, UL864, C-UL California State Fire Marshal, CE, RoHS
- Gold Flash:** No

- Coil Current:**
 - 50 mA @ 18 Vac
 - 83 mA @ 24 Vac
 - 33 mA @ 22 Vdc
 - 35 mA @ 24 Vdc
 - 47 mA @ 30 Vdc

- Coil Voltage Input:**
 - 24 Vac/dc ; 50-60 Hz
 - Drop Out = 3 Vac / 3.8 Vdc
 - Pull In = 18 Vac / 22 Vdc

- Sensor Contact: +**
 - When current sensor status is off (open), leakage < 30 uA @ 30Vac/dc
 - When current sensor status is on (closed), voltage drop < .3 Vac/dc @ .1 Amp
 - < 1.6 Vac/dc @ .4 Amp
- Sensor Feedback Output: ^**
 - Voltage output is proportional to current sensor range.
 - Min. Input Impedance = 30K ohms
 - Accuracy +/- 1% full scale
 - Ripple < 10m Vac

RIBMX24 SERIES SELECTION GUIDE

Model#	Sensing Range	Type*	Threshold	Sensor Output	Resistive	Override Switch	Contact Type	Contact Ratings	Notes
RIBMX24BF ECMs	.50-20 Amps	Internal w/ contact status	Fixed, .50 Amp	Solid State Contact 30 Vac/dc, 0.4 Amp	20 Amp	No	SPDT	20 Amp Resistive @ 277 Vac 20 Amp Ballast @ 277 Vac 16 Amp Electronic Ballast @ 277 Vac (N/O) 10 Amp Tungsten @ 120 Vac (N/O)	
RIBMX24BA ECMs	.50-20 Amps	Internal w/ contact status	Adjustable	Solid State Contact 30 Vac/dc, 0.4 Amp	20 Amp	No	SPDT	1,110 VA Pilot Duty @ 277 Vac 770 VA Pilot Duty @ 120 Vac 240 Watt Tungsten @ 120 Vac (N/C) 2 HP @ 277 Vac 1 HP @ 120 Vac	
RIBMX24BV	0-20 Amps	Internal w/ voltage output	Analog	0-5 Vdc 0-10 Vdc	20 Amp	No	SPDT		
RIBMX24SBF ECMs	.50-20 Amps	Internal w/ contact status	Fixed, .50 Amp	Solid State Contact 30 Vac/dc, 0.4 Amp	20 Amp	Yes	SPST	20 Amp Resistive @ 277 Vac 20 Amp Ballast @ 277 Vac (N/O) 10 Amp Ballast @ 277 Vac (N/C) <i>Not rated for Electronic Ballast</i> 10 Amp Tungsten @ 120 Vac (N/O)	• Normally Open or Normally Closed selected by yellow jumper wire
RIBMX24SBA ECMs	.50-20 Amps	Internal w/ contact status	Adjustable	Solid State Contact 30 Vac/dc, 0.4 Amp	20 Amp	Yes	SPST	1,110 VA Pilot Duty @ 277 Vac 770 VA Pilot Duty @ 120 Vac 240 Watt Tungsten @ 120 Vac (N/C) 2 HP @ 277 Vac 1 HP @ 120 Vac	
RIBMX24SBV	0-20 Amps	Internal w/ voltage output	Analog	0-5 Vdc 0-10 Vdc	20 Amp	Yes	SPST		

ECMs = FDI Certified for use with electronically commutated motors

* = Internal current sensor monitors current through common contact of Relay