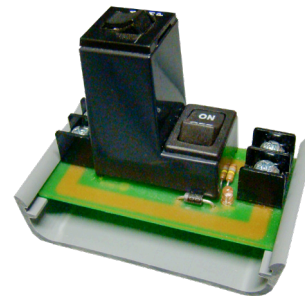
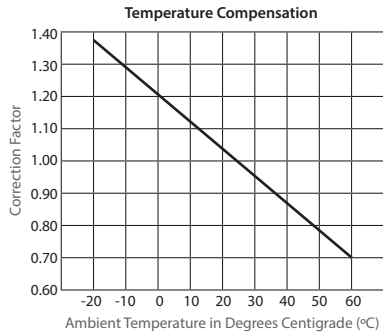


**PREPACKAGED CIRCUIT BREAKER SWITCH**

**PSMN01SB10**

2.75" Track Mount Switch, 2 Position Maintained, On/Off, Circuit Breaker, 120 Vac



**OVER CURRENT / SHORT CIRCUIT PROTECTION AND SWITCHING**



**SPECIFICATIONS**

- Operating Temperature:** -30 to 140° F
- Humidity Range:** 5 to 95% (noncondensing)
- Circuit Breaker:** 10 Amp
- Dimensions:** 2.750" x 1.350" x 2.061"
- Track Mount:** MT212-2 Mounting Track Provided
- Approvals:** UL Listed, UL916, C-UL, CE, RoHS