



WORKS HARDER & SMARTER

The Orbis/Lewis Bins line of Plexton® trays and containers is now part of MFG Tray, allowing us to offer an even larger variety of products in the industrial material handling market. The addition of the Plexton® molds and our newly increased production capacity will further position MFG Tray as a leader in the industry.

Plexton® trays are constructed of the same high quality fiberglass composite materials as standard MFG trays and containers.

MFG Trays are designed to last in heavy-duty, severe environments, and yield a high return on investment, regularly lasting over 15 years in most applications. Specialty composites are also available including Ultra-Lite material, which is 40% lighter than standard FRP, and ESD safe composite, which absorbs static charge for use in the electronics industry.

MFG TRAY'S EXCEPTIONAL VALUE

Molded Fiber Glass Tray – MFG Tray – is a leading manufacturer of high strength, glass reinforced composite containers, trays, boxes, flats, and totes. Our composite products combine outstanding performance features with long service life to ensure exceptional value.

Founded in Linesville, PA in 1952, MFG Tray was the first manufacturer to mass-produce commercial products using polyester resins and fiberglass reinforcements. We continue to strive daily to help our customers solve unique material handling, processing, and storage needs.

Let's chat! Call us at 814-683-4500 or visit us online to learn more about our complete line of fiberglass composite products.



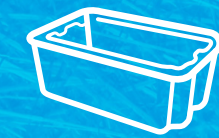
MOLDED FIBER GLASS TRAY COMPANY

TF 800-458-6050 PH 814-683-4500 FX 814-683-4504

www.mfgtray.com



A Molded Fiber Glass Company



Plexton®
Trays &
Containers



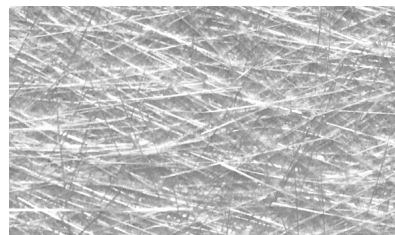
www.mfgtray.com



MFG Tray has more than 70 years of experience designing and molding an extensive line of trays, flats, and containers, and is continually developing new products to meet specific processes.

THE MATERIAL MATTERS IN MATERIAL HANDLING

- » Nest & Stack Containers save valuable space: stack when full, rotate 180 degrees and nest when empty
- » Conveyor & Assembly Trays have a low profile and radius edges for streamlined use in conveyors and racks
- » Smooth outside surface and radial edges for easy handling
- » Lids to protect contents from damage or contamination
- » Impervious to cutting oils, detergents, mild acids and alkaline solutions
- » Withstands temperatures of -60° to 250° F
- » Wide variety of sizes and configurations to accommodate a range of operating requirements

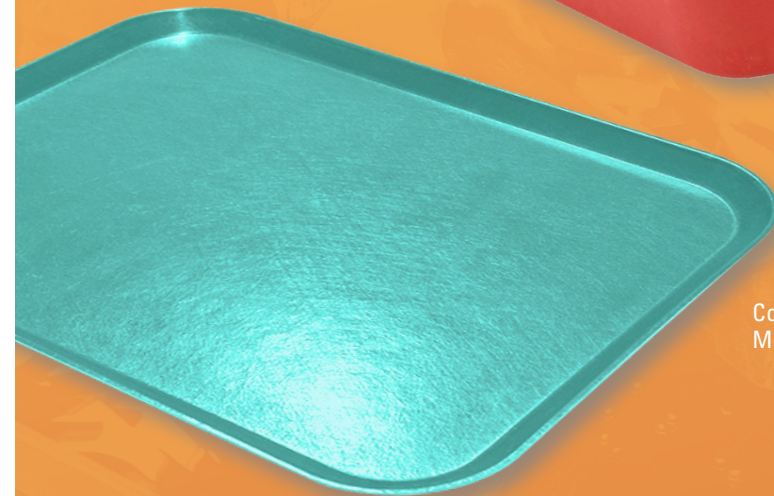


STRENGTH AT THE CORE. Fibers in MFG Tray products are multidirectional for optimal tensile and torsion strength. Fiber lengths vary from 1" to 2". MFG composites contain up to 35 percent of randomly oriented fibers by weight.



Nesting & Stack
Model No. 790508

Nesting Box
Model No. 921108
with Lid



Conveyor Tray
Model No. 318001

Hopper
Model No. 842208



NEST & STACK TOTES

| MFG Tray Model No. | Plexton® Model No. | MFGT Lid Model No. | Plexton® Lid Model No. | Top Outside Dimensions (LxWxH) | | |
|--------------------|--------------------|--------------------|------------------------|--------------------------------|------------|-------------|
| | | | | Length (in) | Width (in) | Height (in) |
| 780208 | HSN1610-5-P | 780218 | HCSN1610-1 | 17 7/8 | 10 5/8 | 5 |
| 780308 | HSN1812-6-P | 780318 | HCSB1812-1 | 19 3/4 | 12 1/2 | 6 |
| 780408 | HSN1812-8-P | 780418 | HCSN2013-1 | 20 1/2 | 12 7/8 | 8 |
| 780508 | HSN2214-8-P | 780518 | HCSN2214-1 | 24 1/4 | 14 3/4 | 8 |
| 780608 | HSN2217-10P | 780618 | HCSN2217-1 | 25 1/4 | 18 | 10 |
| 780708 | HSN2419-14P | 780718 | HCSN2419-1 | 27 1/2 | 20 | 14 1/8 |
| 780808 | HSN2217-6P | 780618 | HCSN2217-1 | 25 1/4 | 18 | 6 |
| 780008W | HSN3919-14P | 780118 | HCSN3919-1 | 42 1/2 | 20 | 14 1/4 |
| 790408 | SN2010-9 | 790618 | CSN2010-1 | 24.1 | 11.4 | 9 |
| 790508 | SN2214-5 | 780518 | CSN2214-1 | 24.3 | 14.8 | 5.1 |
| 790608 | SN2010-7 | 790618 | CSN2010-1 | 24.1 | 11.4 | 6.9 |
| 790708 | SN2713-7 | | | 29.6 | 13.8 | 7 |
| 790808 | SN3023-8 | | | 34.1 | 24 | 8.1 |
| 790908 | SN2716-11 | 790918 | CSN2716-1 | 30.6 | 16.9 | 11.1 |

* New products are marked in Blue

NESTING CONTAINERS

| MFG Tray Model No. | Plexton® Model No. | MFGT Lid Model No. | Plexton® Lid Model No. | Top Outside Dimensions (LxWxH) | | |
|--------------------|--------------------|--------------------|------------------------|--------------------------------|------------|-------------|
| | | | | Length (in) | Width (in) | Height (in) |
| 920108 | HNO118-4 | 920118 | HCNO118-1 | 11 3/4 | 8 3/4 | 4 1/8 |
| 921108 | HNO65-2 | 921118 | HCNO65-1 | 6 1/8 | 4 7/8 | 2 1/8 |
| 922108 | HNO96-2 | 922118 | HCNO96-1 | 9 3/4 | 6 1/8 | 2 1/8 |
| 926108 | HNO96-4 | 922118 | HCNO96-1 | 9 3/4 | 6 1/8 | 4 1/2 |
| 930108 | HO129-2 | 930118 | HCNO129-1 | 12 3/8 | 9 3/4 | 2 1/8 |

CONVEYOR & ASSEMBLY TRAYS

| MFG Tray Model No. | Plexton® Model No. | Top Outside Dimensions (LxWxH) | | |
|--------------------|--------------------|--------------------------------|------------|-------------|
| | | Length (in) | Width (in) | Height (in) |
| 334001 | HTR1812-1 | 17 3/4 | 11 3/4 | 1 |
| 318001 | HTR1814-1 | 18 | 14 | 1 |
| 304001 | HTR2015-1 | 20 3/8 | 15 1/8 | 1 |
| 332001 | HTR2618-1 | 25 3/4 | 17 7/8 | 1 1/8 |

ESD CONVEYOR & ASSEMBLY TRAYS

| MFG Tray Model No. | Plexton® Model No. | Top Outside Dimensions (LxWxH) | | |
|--------------------|--------------------|--------------------------------|------------|-------------|
| | | Length (in) | Width (in) | Height (in) |
| 334000 | TR1812-1SD | 17 3/4 | 11 3/4 | 1 |
| 318000 | TR1814-1SD | 18 | 14 | 1 |
| 304000 | TR2015-1SD | 20 3/8 | 15 1/8 | 1 |
| 332000 | TR2618-1SD | 25 3/4 | 17 7/8 | 1 1/8 |

HOPPERS

| MFG Tray Model No. | Plexton® Model No. | Top Outside Dimensions (LxWxH) | | |
|--------------------|--------------------|--------------------------------|------------|-------------|
| | | Length (in) | Width (in) | Height (in) |
| 842008 | | 24 | 10 | 8 |
| 842108 | SH1811-7 | 18.1 | 11.4 | 7.6 |
| 842208 | SH2411-8 | 24 | 11.4 | 7.9 |
| 842308 | SH2416-8 | 24.1 | 16.3 | 8 |

* New products are marked in Blue