

## Operating Instructions for the MSSC LD450

*Note:* The LD450 dispenser is shipped mounted to a base to prevent shifting in the container.

1. Remove the machine from the base.

**\*\*Always load the LD450 dispenser with the On-Off Switch in the (OFF) position.\*\***

2. To load a roll of labels on the LD450, loosen the unwind hub screw (57) on the unwind collar (56) and remove the collar, unwind washer, unwind spring, and disc from the unwind shaft.

3. Place the roll of labels on the unwind shaft between the two unwind discs. Place the roll with the beginning of the roll on the bottom with the web dispensing to your right as you face the side of the machine.

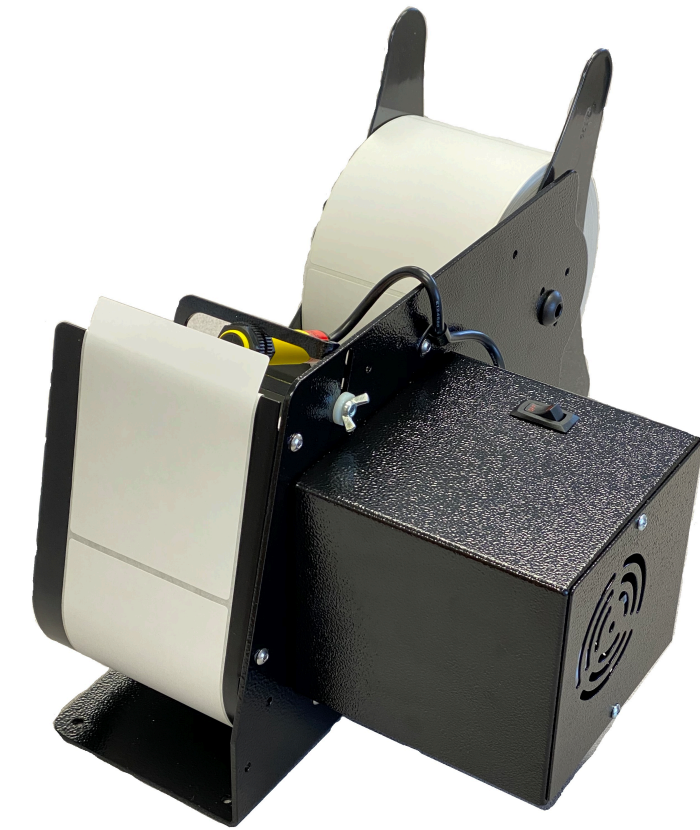
4. Replace the unwind disc, unwind spring, and collar onto unwind shaft. If using labels on a 3" diameter core, the hub on each disc will fit inside the core and support the roll of labels. If the labels are on a 1" core, simply slide the disc up snugly against the roll of labels. When the disc is in place, tighten the unwind hub screw against unwind shaft.

5. Thread the loose end of labels under and up the front of the peel plate.

6. Pull the labels over top of peel plate far enough to reach the waste take-up roll.

7. Remove the waste wind clip, thread label backing paper under clip, and reinsert clip over loose paper.

8. Position the Photo Eye by loosening wing nuts and moving assembly to right or left so that the sensor is at or near the center of the labels. The Photo Eye can be tilted forward or backward by loosening the mounting bracket vertical adjustment wing nut.



9. Turn on On-Off switch. The waste wind shaft will turn, winding up backing paper and dispensing a label at the top of the peel plate. When the Photo Eye senses the dispensed portion of the label, the motor will stop. As each label is removed, the machine will operate until the next label is in position to be removed. **(CAUTION:) Turn off switch before removing wound up waste.**

10. If labels tend to follow backing paper over the top of the peel plate instead of peeling off, then there is insufficient tension on the web of the labels. The shaft adjustment collar should be moved in to put more tension on the web.

11. If the motor stalls it may be necessary to move the shaft collar out to reduce the amount of unwind tension.



### MSSC, LLC

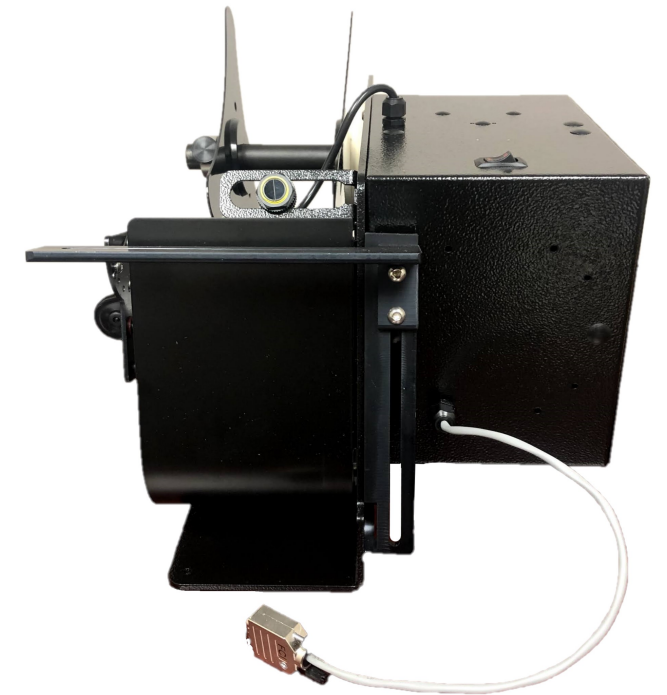
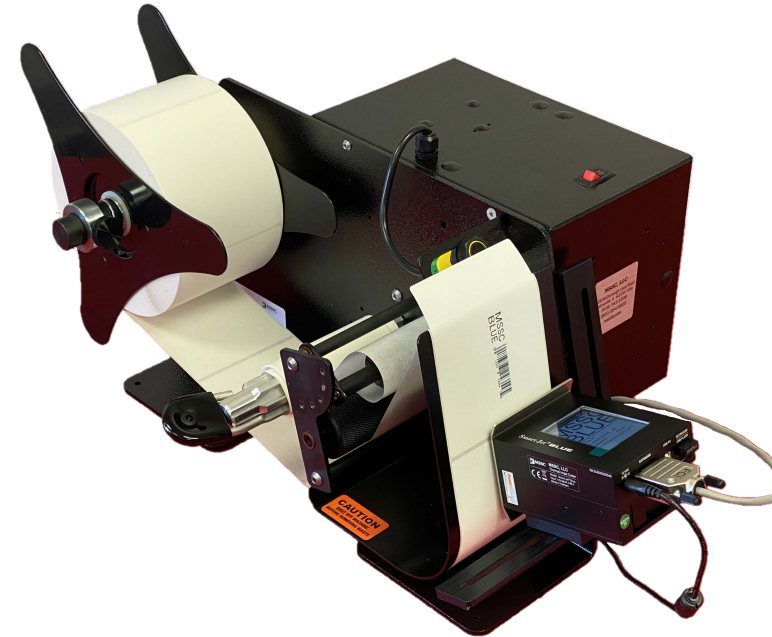
Marking | Stenciling | Sealing | Coding | Labeling

msscllc.com • orders@msscllc.com • 926 McDonough Lake Rd. Collinsville, IL 62234 • 618.343.1006



# Operating Instructions

## General Specifications, LD450



### General Specifications, LD450

Size (Approx.):  
14.58W x 12.38H x 18.50D

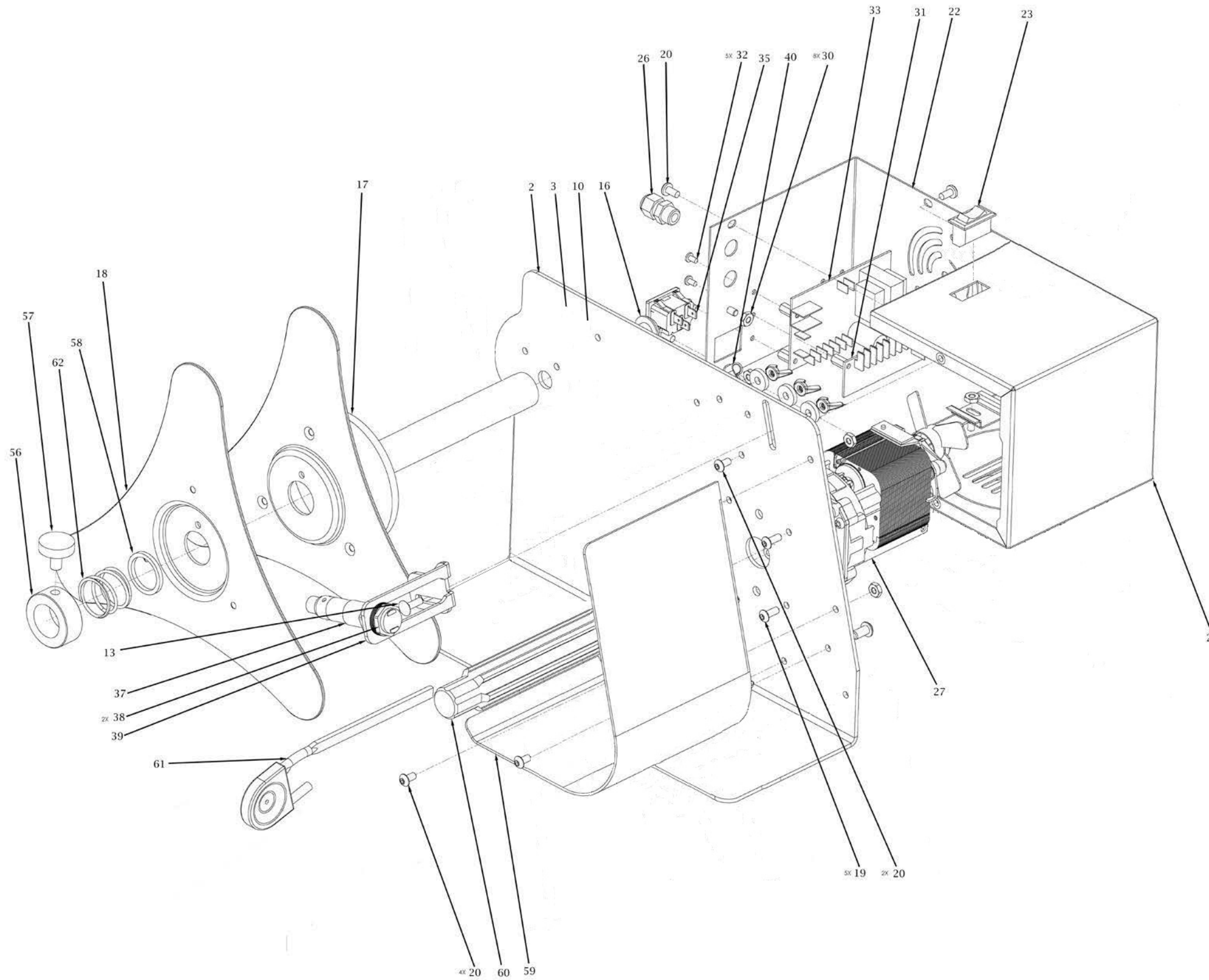
Shipping Weight:  
24 lbs (10.9 KG)

Electrical:  
110/120VAC, 50/60HZ, 4  
AMP FUSE

Set Up Videos:



# LD450 Label Dispenser Exploded View



ITEM#	DESCRIPTION	NOTES	QTY.
1	45125, Unwind shaft		1
2	25201, 250, 450, 750 Main frame		1
13	45181, Carriage Bolt		2
16	30653, 1/2-13x.75 BHCS		1
17	72618, Felt Washer		1
18	45136, Unwind Disc		2
19	10-32x0.5 BHCS		5
20	10-32x0.375 BHCS		10
21	25202, 250, 450, 750 Motor housing		1
22	25203, 250, 450, 750 Rear and side cover		1
23	40007, Power On/Off switch		1
26	81912, Small cord grip		1
27	76800, Gear Motor		1
30	10-32 Hex Nut		8
31	45100, PCB - 250, 450, 750 DV		1
32	6-32x0.25 BHCS		5
33	45102, Control Board - 450, 750 CS	Optional: Used with Special DC Photoeyes	1
35	25211, IEC Outlet, 701wx204		1
Not Shown	25212, IEC Line cord, US	Not Shown	1
37	25213, Photoeye	Photo Eye Label Sensor	1
38	81904, Photo eye Ring Nut	Photo Eye Label Sensor	2
39	25204, Photo eye bracket	Photo Eye Label Sensor	1
40	45186, P-clip		1
56	26001, Shaft Collar		1
57	26002, Knob		1
58	25112, Washer		1
59	45124, Peel plate		1
60	45129, LD450 Waste Rewind		1
61	45131, Waste Wind Clip		1
62	25113, Unwind Spring		1