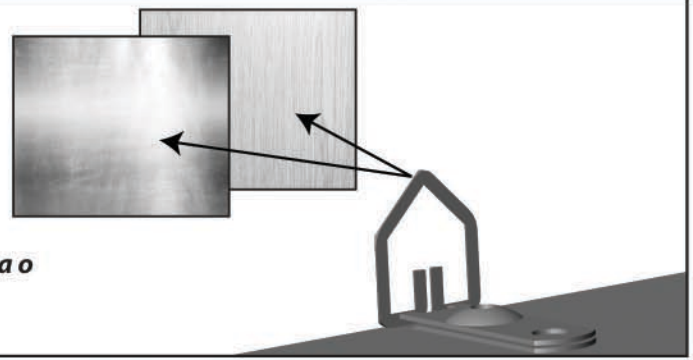


All Mirrors should be securely mounted to wood or metal substrates, and should NOT be mounted to drywall without additional support.

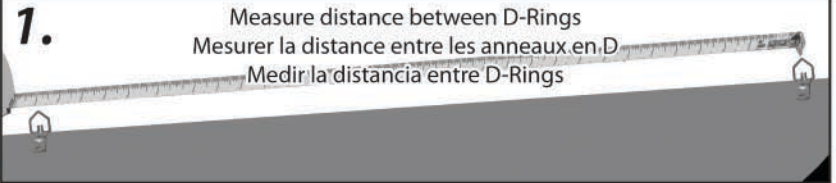
Tous les rétroviseurs doivent être solidement fixés au bois ou substrats métalliques, et ne doit pas être monté sur placoplâtre sans un soutien supplémentaire.

Todos los espejos deben montarse con seguridad en la madera o sustratos metálicos y no deben ser montados en paneles de yeso sin apoyo adicional.



Half Dome

- (2) - Screws | vis | tornillos
- (2) - wall Anchors
(2) - chevilles
(2) - anclajes de pared



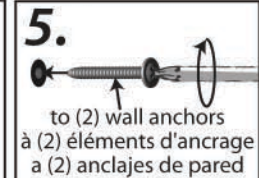
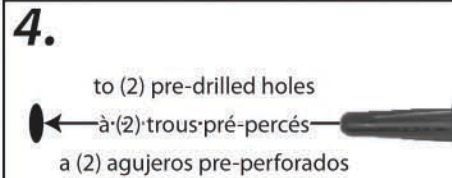
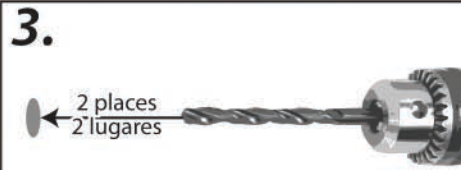
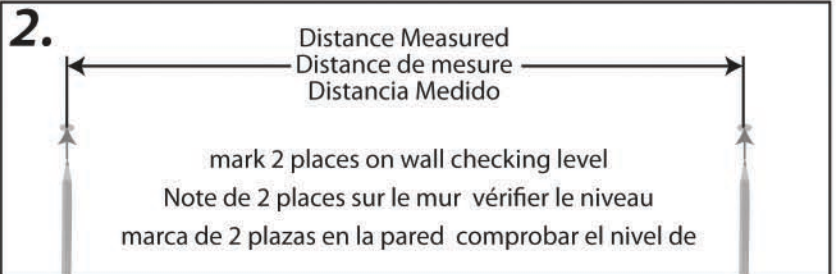
for installation | pour l'installation | para la instalación

3/16" Drill Bit | 3/16 "Mèche | 3/16 "Broca

Phillips Head Screwdriver
Tournevis cruciforme
Destornillador Phillips

drill | forer | perforar

not included | pas inclus | no incluido



Quarter Dome | quartier du Dôme

- (2) - Screws | vis | tornillos
- (2) - wall Anchors
(2) - chevilles
(2) - anclajes de pared



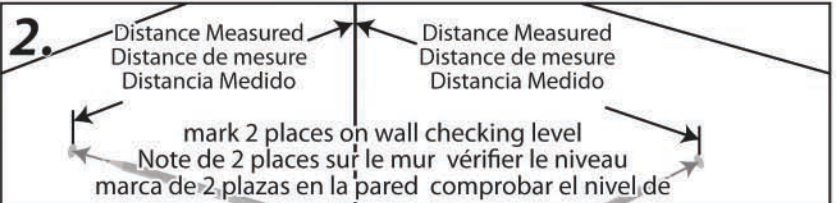
for installation | pour l'installation | para la instalación

3/16" Drill Bit | 3/16 "Mèche | 3/16 "Broca

Phillips Head Screwdriver
Tournevis cruciforme
Destornillador Phillips

drill | forer | perforar

not included | pas inclus | no incluido



3. Follow Steps 3 thru 6 above | Suivez les étapes 3 à 6 ci-dessus | Siga los pasos 3-6 arriba

Cleaning
Nettoyage
Limpieza

encaustique
cera para muebles



Soft cloth
chiffon doux
pañó suave

