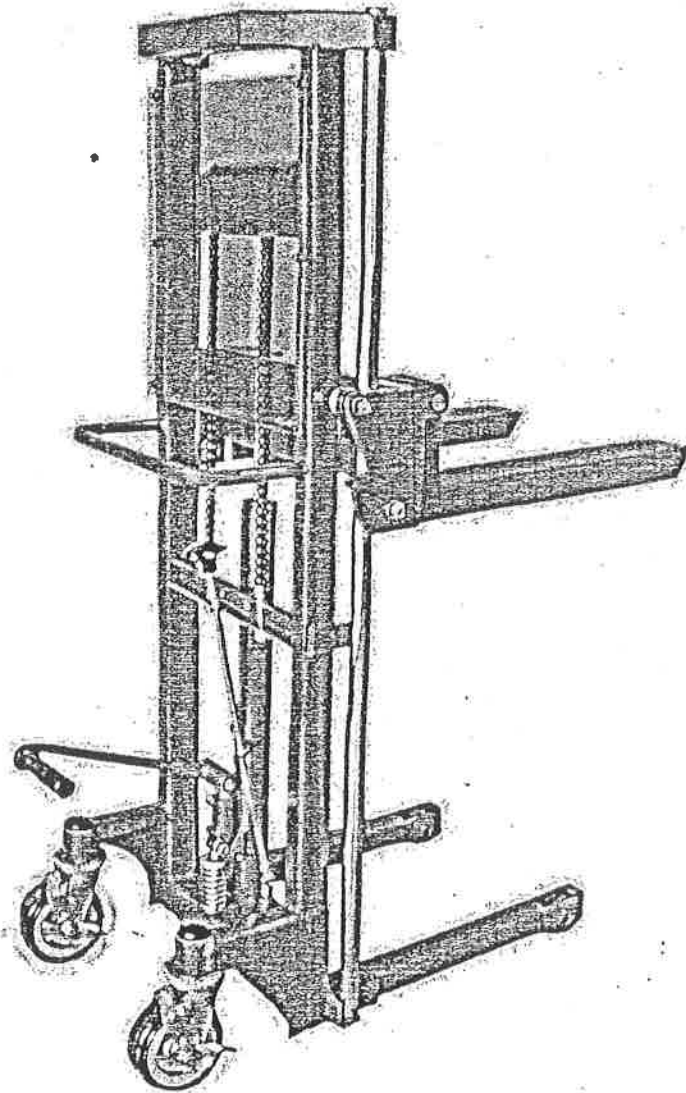


Instruction Manual

Hand-hydraulic Stacker



Model: HYDRA-15

Note: Owner/Operator must read and understand this

HYDRA-15 HAND-HYDRAULIC STACKER

1. Brief Instruction

This Stacker is a multi-function transport and loading products, which designed on the base of HYD-5 and HYD-10. It is a convertible vehicle using for lifting and transporting in workshop, warehouse and wharf, etc, which can reduce labor intensity and improve the produce efficiency, and a good tool for safe loading.

2. Data Base

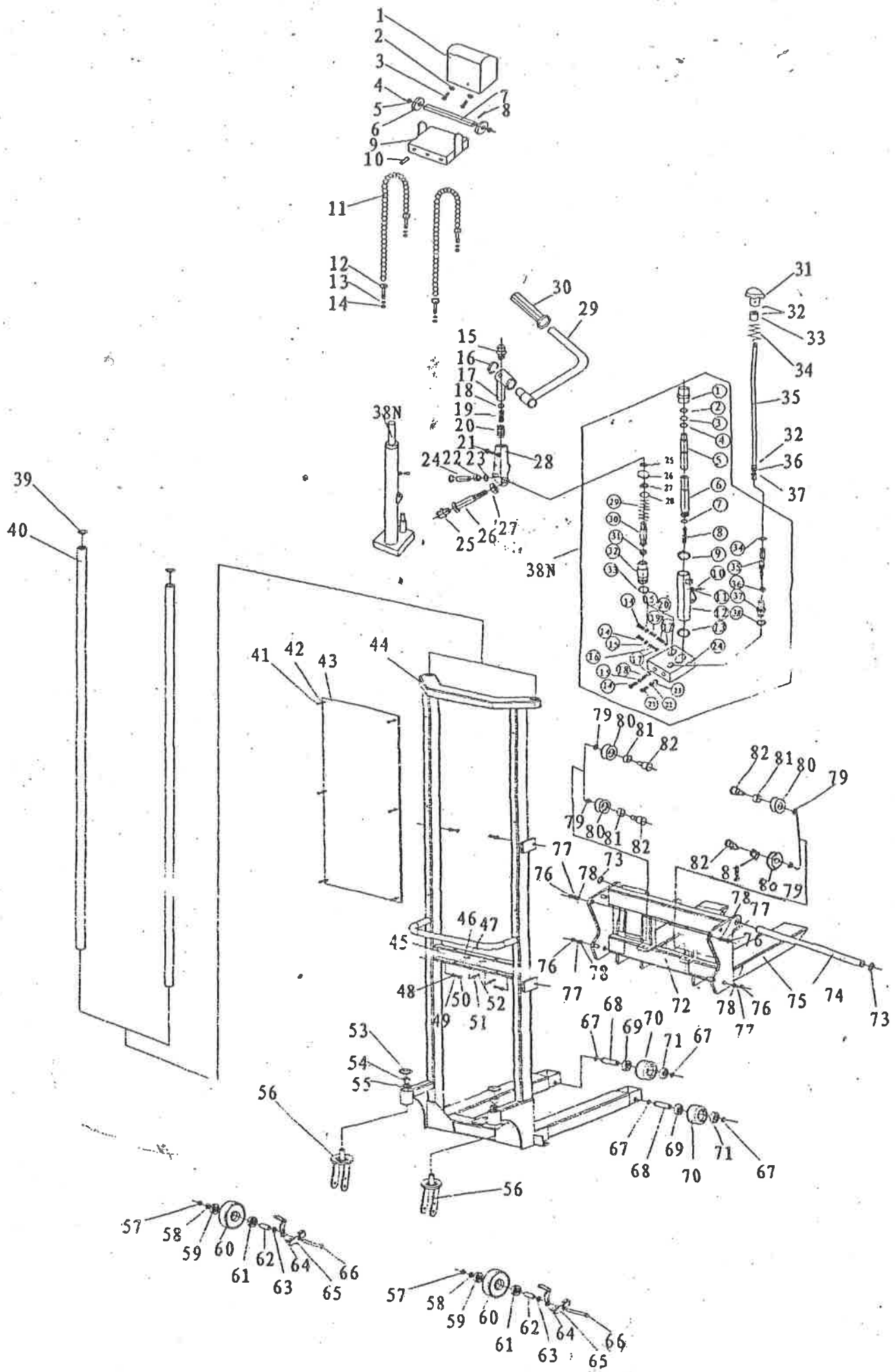
Model	HYDRA-15
Rate Capacity	800kg (1760lbs)
Lowest Height	90mm
Max. Height	1600mm
Fork Length	800mm
Fork Width	585mm
Net Weight	180kg

3. Using

- 1) Please test the stacker before using. Step the foot pedal rod to lift the fork to the max position and check the discharge valve.
- 2) Please fix the stacker and brake the wheel before loading
- 3) Please load the goods in the rate capacity of the stacker
- 4) Turn the handwheel (knob) to lower down the fork, and keep the discharge valve open.

4. Warning!

- (1) Operate strictly according to the instruction manual.
- (2) Do not use the cart on slop.
- (3) Do not allow people to sit or ride on the cart.
- (4) Keep feet and hand away from under the lowering fork.
- (5) No permit to put the foot on the foot pedal of the wheel when the fork lowering down.
- (6) The goods much be put on the correct position.
- (7) Do not move the heavy goods when the fork or platform on the high position.
- (8) No permit loading excess its rate capacity.
- (9) Mistake using will bring out damage to the personal or property.



HYDRA-15 HAND HYDRAULIC STACKER

No.	Description	Q'ty	No.	Description	Q'ty	No.	Description	Q'ty
1	Chain Wheel Cover	1	41	Round Screw	6	81	No Oil Bearing	4
2	Spring Washer	4	42	Rubber Washer	6	82	Roller Guide Shaft	4
3	Semicircle Screw	4	43	Organic Glass	1	(1)	Top Nut	1
4	Hex Cap Bolt	2	44	Cart Holder	1	(2)	Dust Cover	1
5	Flat Washer	2	45	Nut	2	(3)	O-ring	1
6	Chain, Wheel	2	46	Spring Washer	2	(4)	Oil Seal	1
7	Chain Wheel Shaft	1	47	Flat Washer	2	(5)	Lift Piston	1
8	Spring Column Pin	1	48	Flat Washer	4	(6)	Inner Cylinder Body	1
9	Chain Wheel Seat	1	49	Spring Washer	4	(7)	Washer	1
10	Set Bolt	1	50	Hex Cap Bolt	4	(8)	Fliter	1
11	Chain	2	51	Flat Washer	2	(9)	Washer	1
12	Chain Bolt	2	52	Hex Cap Bolt	2	(10)	Hex Cap Plug	1
13	Flat Washer	2	53	Dust Cover	2	(11)	O-ring	1
14	Set Nut	2	54	Big Nut	2	(12)	Outer Cylinder Body	1
15	Oil Mouth	1	55	Big Spring Washer	2	(13)	Washer	1
16	Lock Pin	1	56	Wheel Holder	2	(14)	Hex Cap Plug	1
17	Joint Welden Block	1	57	Nut	2	(15)	O-ring	1
18	Steel Ball	1	58	Separate Cover	2	(16)	Spring	1
19	Spring	1	59	Bearing	2	(17)	Steel Ball	1
20	Hex Cap Bolt	1	60	Big Wheel	2	(18)	Spring	1
21	Oil Mouth	1	61	Bearing	2	(19)	Spring	1
22	Pressure Wheel	1	62	Bearing Cover	2	(20)	Column Plug	1
23	C-ring	1	63	Separate Cover	2	(21)	Hex Cap Plug	1
24	Shaft	1	64	Brake Board	2	(22)	O-ring	1
25	Oil Mouth	1	65	Brake Holder	2	(23)	Lowering Valve	1
26	Shaft	1	66	Hex Cap Bolt	2	(24)	Valve	1
27	Nut	1	67	C-ring	2	(25)	C-ring	1
28	Foot Pedal Holder	1	68	Shaft	2	(26)	Spring Seat	1
29	Foot Pedal	1	69	Bearing	2	(27)	Dust Cover	1
30	Foot Pedal Cover	1	70	Small Wheel	2	(28)	O-ring	1
31	Hex Handwheel	1	71	Bearing	2	(29)	Big Spring	1
32	Set Screw	2	72	Move Block	1	(30)	Small Lift Piston	1
33	Spring Set Cover	1	73	C-ring	2	(31)	Oil Seal	1
34	Turn Spring	1	74	Long Shaft	1	(32)	Pump Cylinder	1
35	Straight Rod	1	75	Fork	2	(33)	O-ring	1
36	Upper Joint Cover	1	76	Nut	4	(34)	O-ring	1
37	Down Joint Cover	1	77	Spring Washer	4	(35)	Close Cover	1
38N	Cylinder	1	78	Flat Washer	4	(36)	Steel Ball	1
39	Top Nut	2	79	Separate Cover	4	(37)	Close Cover	1
40	Slide Post	2	80	Roller Guide	4	(38)	Nylon Washer	1