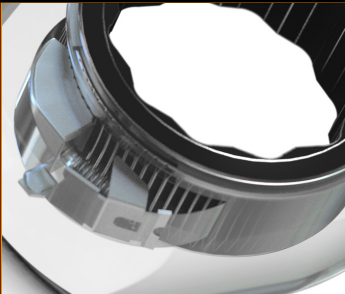


# GEARWRENCH®

## 90T RATCHETING WRENCHES

These new 90T™ ratcheting wrenches are perfect for the tight situations technicians face every day. Their 90-tooth 12-point ratcheting box end turns 6 and 12-point fasteners with just a 4° swing arc for improved access, while dual-direction off-corner loading reduces fastener rounding. They're longer for greater reach and leverage and their large color markings make size identification quick and easy. GEARWRENCH Lifetime Warranted and available now.

### Key Product Upgrades



- 90-teeth deliver a 4 degree swing arc for improved access



- Dual-direction off-corner loading on open-end reduces fastener rounding



- Longer, more ergonomic beam than 72T ratcheting wrenches



- Large color-coded markings for easy size ID

### Combination Ratcheting Wrenches



- 90-teeth deliver a 4 degree swing arc for improved access

- Professional, full polish chrome finish is easy to clean

- Longer, wider beam for improved reach, leverage, and comfort

- Large color-coded markings for easy size ID

- Dual-direction off-corner loading on open-end reduces fastener rounding

- Off-corner loading design to reduce fastener rounding

- Meets or exceeds ASME performance requirements

- Adjustable angle flex-head provides better access to hard-to-reach fasteners



Also Available in Flex-Head

#### 90T More Ergonomic

New 90T with thicker beam



72T with narrower beam



## GET MORE GEARWRENCH

More Length. More Teeth. More Access.

FORGE AHEAD

## Combination Ratcheting Wrenches



**90T**



Cat. No.	Size	Open End Width (in)	Open End Thickness (in)	Box End Width (in)	Box End Thickness (in)	Overall Length (in)	Product Weight (lb)
86906	6	0.567	0.181	0.654	0.256	5.118	0.07
86907	7	0.665	0.193	0.697	0.272	5.709	0.09
86908	8	0.665	0.193	0.697	0.272	5.709	0.09
86909	9	0.768	0.213	0.752	0.272	6.189	0.11
86910	10	0.862	0.224	0.831	0.303	6.673	0.13
86911	11	0.953	0.252	0.909	0.323	7.094	0.18
86912	12	1.047	0.291	0.969	0.339	7.453	0.22
86913	13	1.122	0.319	1.047	0.339	7.839	0.26
86914	14	1.228	0.327	1.102	0.370	8.378	0.33
86915	15	1.327	0.327	1.201	0.390	8.850	0.37
86916	16	1.358	0.346	1.276	0.406	9.220	0.40
86917	17	1.492	0.362	1.358	0.421	9.854	0.51
86918	18	1.583	0.370	1.394	0.441	10.366	0.55
86919	19	1.626	0.374	1.445	0.441	10.886	0.66
86920	20	1.807	0.382	1.622	0.512	12.000	0.88
86921	21	1.807	0.382	1.622	0.512	12.000	0.88
86922	22	1.807	0.382	1.622	0.512	12.000	0.88
86924	24	2.055	0.406	1.894	0.571	13.563	1.32
86925	25	2.055	0.406	1.894	0.571	13.563	1.39
Cat. No.	Size	Open End Width (in)	Open End Thickness (in)	Box End Width (in)	Box End Thickness (in)	Overall Length (in)	Product Weight (lb)
86940	1/4"	0.567	0.181	0.654	0.256	5.118	0.07
86941	5/16"	0.665	0.193	0.697	0.272	5.709	0.09
86942	11/32"	0.768	0.213	0.752	0.272	6.189	0.11
86943	3/8"	0.862	0.224	0.831	0.303	6.673	0.13
86944	7/16"	0.953	0.252	0.909	0.323	7.094	0.20
86945	1/2"	1.122	0.319	1.047	0.339	7.839	0.26
86946	9/16"	1.228	0.327	1.102	0.370	8.378	0.33
86947	5/8"	1.358	0.346	1.276	0.406	9.220	0.42
86948	11/16"	1.492	0.362	1.358	0.421	9.854	0.53
86949	3/4"	1.626	0.374	1.445	0.441	10.886	0.64
86950	13/16"	1.807	0.382	1.622	0.512	12.000	0.92
86951	7/8"	1.807	0.382	1.622	0.512	12.000	0.90
86952	15/16"	2.055	0.406	1.894	0.571	13.563	1.32
86953	1"	2.055	0.406	1.894	0.571	13.563	1.28
86954	1-1/16"	2.221	0.429	2.037	0.610	14.142	1.43
86955	1-1/8"	2.429	0.469	2.270	0.669	15.846	1.91
86956	1-1/4"	2.583	0.484	2.402	0.689	16.764	2.29

**FORGE AHEAD**

## Flex-Head Ratcheting Wrenches



**90T**



Cat. No.	Size	Open End Width (in)	Open End Thickness (in)	Box End Width (in)	Box End Thickness (in)	Overall Length (in)	Product Weight (lb)
86708	8	0.665	0.193	0.697	0.272	5.709	0.11
86709	9	0.768	0.213	0.752	0.272	6.189	0.13
86710	10	0.862	0.224	0.831	0.303	6.673	0.17
86711	11	0.953	0.252	0.909	0.323	7.094	0.19
86712	12	1.047	0.291	0.969	0.339	7.453	0.26
86713	13	1.122	0.319	1.047	0.339	7.839	0.30
86714	14	1.228	0.327	1.102	0.370	8.378	0.35
86715	15	1.327	0.327	1.201	0.390	8.850	0.41
86716	16	1.358	0.346	1.276	0.406	9.220	0.48
86717	17	1.492	0.362	1.358	0.421	9.854	0.55
86718	18	1.583	0.370	1.394	0.441	10.366	0.63
86719	19	1.626	0.374	1.445	0.441	10.886	0.68
86721	21	1.807	0.382	1.622	0.512	11.476	0.90
86722	22	1.807	0.382	1.622	0.512	11.476	0.92
86724	24	2.055	0.417	1.894	0.571	13.114	1.34
86725	25	2.055	0.417	1.894	0.571	13.114	1.32
Cat. No.	Size	Open End Width (in)	Open End Thickness (in)	Box End Width (in)	Box End Thickness (in)	Overall Length (in)	Product Weight (lb)
86740	1/4"	0.567	0.181	0.654	0.256	5.118	0.08
86741	5/16"	0.665	0.193	0.697	0.272	5.709	0.11
86742	11/32"	0.768	0.213	0.752	0.272	6.189	0.13
86743	3/8"	0.862	0.224	0.831	0.303	6.673	0.17
86744	7/16"	0.953	0.252	0.909	0.323	7.094	0.22
86745	1/2"	1.122	0.319	1.047	0.339	7.839	0.30
86746	9/16"	1.228	0.327	1.102	0.370	8.378	0.35
86747	5/8"	1.358	0.346	1.276	0.406	9.220	0.48
86748	11/16"	1.492	0.362	1.358	0.421	9.854	0.55
86749	3/4"	1.626	0.374	1.445	0.441	10.886	0.68
86750	13/16"	1.807	0.382	1.622	0.512	11.476	0.92
86751	7/8"	1.807	0.382	1.622	0.512	11.476	0.90
86752	15/16"	2.055	0.417	1.894	0.571	13.114	1.34
86753	1"	2.055	0.417	1.894	0.571	13.114	1.36



**FORGE AHEAD**

# Ratcheting Wrench Sets

## COMBINATION RATCHETING WRENCHES

86928



86959



86927



86958



## FLEX-HEAD RATCHETING WRENCHES

86728



86759



86727

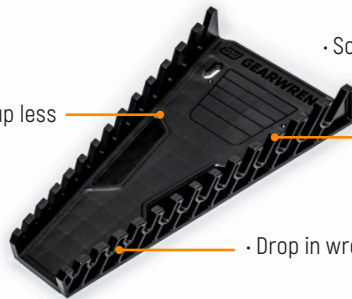


86758



Cat. No.	Description	Type	Sizes
86928	16 Pc 90T 12-Point Combination Ratcheting Wrench Set	Metric	8, 9, 10, 11, 12, 13, 14, 15, 16, 17, 18, 19, 21, 22, 24, 25mm
86959	14 Pc 90T 12-Point Combination Ratcheting Wrench Set	SAE	1/4", 5/16", 11/32", 3/8", 7/16", 1/2", 9/16", 5/8", 11/16", 3/4", 13/16", 7/8", 15/16", 1"
86927	12 Pc 90T 12-Point Combination Ratcheting Wrench Set	Metric	8, 9, 10, 11, 12, 13, 14, 15, 16, 17, 18, 19mm
86958	10 Pc 90T 12-Point Combination Ratcheting Wrench Set	SAE	1/4", 5/16", 11/32", 3/8", 7/16", 1/2", 9/16", 5/8", 11/16", 3/4"
86728	16 Pc 90T 12-Point Flex-Head Combination Ratcheting Wrench Set	Metric	8, 9, 10, 11, 12, 13, 14, 15, 16, 17, 18, 19, 21, 22, 24, 25mm
86759	14 Pc 90T 12-Point Flex-Head Combination Ratcheting Wrench Set	SAE	1/4", 5/16", 11/32", 3/8", 7/16", 1/2", 9/16", 5/8", 11/16", 3/4", 13/16", 7/8", 15/16", 1"
86727	12 Pc 90T 12-Point Flex-Head Combination Ratcheting Wrench Set	Metric	8, 9, 10, 11, 12, 13, 14, 15, 16, 17, 18, 19mm
86758	10 Pc 90T 12-Point Flex-Head Combination Ratcheting Wrench Set	SAE	1/4", 5/16", 11/32", 3/8", 7/16", 1/2", 9/16", 5/8", 11/16", 3/4"

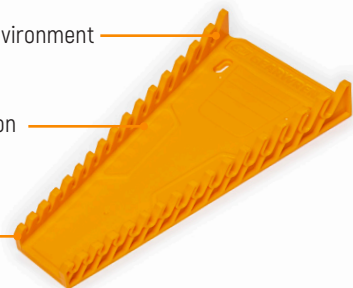
· Compact rack design takes up less space in a tool box drawer



· Solvent resistant for durability in shop environment

· Color coded for easy identification

· Drop in wrench placement for easy access



# GET MORE GEARWRENCH

## More Length. More Teeth. More Access.

Apex Tool Group, LLC  
1000 Lurkin Road, Apex, NC 27539

GEARWRENCH® is registered as a trademark of Apex Brands, Inc., a Division of Apex Tool Group, LLC.

www.apextoolgroup.com  
©2020 Apex Tool Group, LLC

Specifications subject to change without notice.  
ATG-6194

f i t v  
www.gearwrench.com

**FORGE AHEAD**