

FlexAlert

from  trumeter

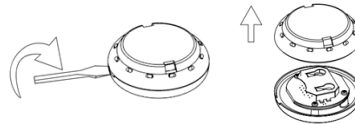


QUICKSTART GUIDE

031978-01 Version 1.0 06/2021

Starting and resetting the unit

- 1 Unclip housing by twisting a flat screwdriver in the slot between front and rear cover.

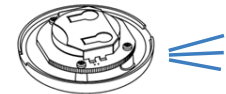


- 2 To turn on, remove battery insulation tab ensuring the battery remains in place. To reset, remove old battery. Insert CR2032 battery into the battery holder. The markings on the battery holder specifies the orientation of the battery.

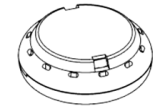


Turning on the unit

- 3 The buzzer will beep 4 times to confirm the battery is fitted correctly and the timer has now started.



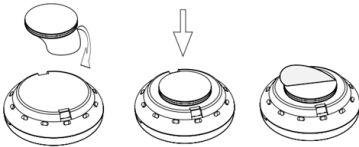
- 4 Clip the rear cover back on to the front cover taking care to align the cut outs of front and rear housing.



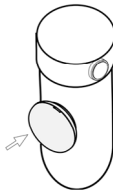
Note: Unit begins to count to the pre-programmed time duration (1-732days). Once pre-programmed time has elapsed, the unit will make a repeated audible sound, beeping every 2 seconds until the battery is replaced.

Mounting using hook and loop

- 1 Peel film from one side and stick to rear cover of unit.

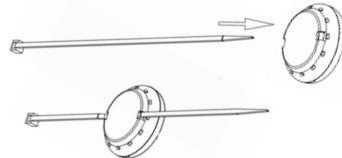


- 2 Peel film from opposite side and stick hook and loop pad to desired area.

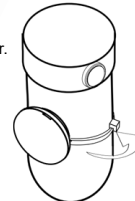


Mounting using cable tie

- 1 Slide cable tie through the slots on the rear cover.



- 2 Tighten cable around pipe or filter.



Contact us

Europe - Trumeter

Pilot Mill, Alfred Street, Bury, BL9 9EF UK
Tel: +44 161 674 0960 Email: sales.uk@trumeter.com

Americas - Trumeter

6601 Lyons Rd, Suite H-7, Coconut Creek, Florida, 33073 USA
Tel: +1 954 725 6699 Email: sales.usa@trumeter.com

Asia Pacific - Innovative Design Technologies

Lot 5881, Lorong Iks Bukit Minyak 1 Taman Perindustrian Iks,
14000 Bukit Tengah, Penang, Malaysia
Tel: + 604 5015700 Email: info@idtworld.com

Information



WARNING

CAUTION: CHOKING HAZARD
- small parts. Not suitable for
children under 3 yrs.

