



VESTIL MANUFACTURING CORP.

2999 North Wayne Street, P.O. Box 507, Angola, IN 46703

Telephone: (260) 665-7586 -or- Toll Free (800) 348-0868

Fax: (260) 665-1339

www.vestilmfg.com e-mail: sales@vestil.com

CART-1750

Instruction Manual



RECEIVING INSTRUCTIONS:

After delivery, IMMEDIATELY remove the packaging from the product in a manner that preserves the packaging and maintains the orientation of the product in the packaging; then inspect the product closely to determine whether it sustained damage during transport. If damage is discovered during the inspection, immediately record a complete description of the damage on the bill of lading. If the product is undamaged, discard the packaging.

NOTES:

1) Compliance with laws, regulations, codes, and non-voluntary standards enforced in the location where the product is *used* is exclusively the responsibility of the owner/end-user.

2) VESTIL is not liable for any injury or property damage that occurs as a consequence of failing to apply either:

a) Instructions provided in this manual; or

b) Information appearing on labels affixed to the product.

Neither is Vestil responsible for *any* consequential damages sustained as a result of failing to exercise sound judgment while assembling, installing, using or maintaining this product.

CART - 1750

I. Use & applicable range

It is a convertible vehicle using for lifting and transporting in workshop, warehouse and wharf, etc.

II. Basic Data:

Model	TF 75	TF 100
Load Capacity	750kgs	1000kgs
Lift Height	1000mm	1000mm
Lowest Height	410mm	410mm
Table Dimensions	1000×513×55mm	1000×513×55mm
Packing Dimensions	1160×620×430mm	1160×620×430mm
Net Weight	115kgs	117kgs

III. Installing

1. Install the handle (#14) on the frame seat (#22), and fix them by two M12 bolts.
2. Insert the foot pedal rod (#82) into the hole of the foot pedal holder (#78), and fix them by M8 bolt.
3. Insert the brake thread (#21) into the press bolt (#64), and fix them by M8 nut.

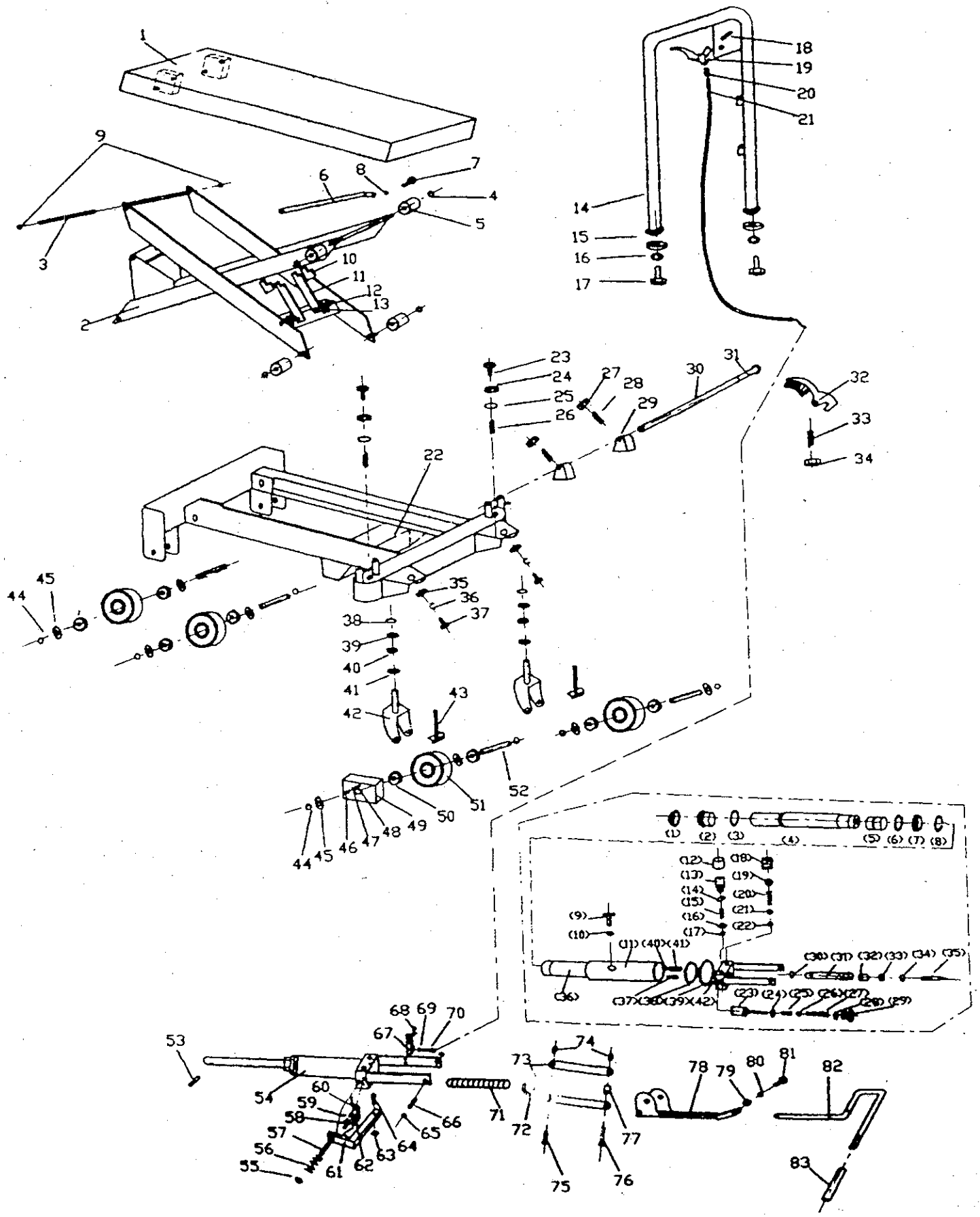
IV. Using

1. Test the cart before using it. Firstly step the foot pedal rod to lift the table to the max height, and then release the limit oil valve to check whether the cart is ok.
2. Please fix the cart and to brake the wheel before loading.
3. Adjust the table's height by step the foot pedal lift up and down to load or unloading in its rated loading.
4. When lower the table, draw up the handle.

V. Warning

- (1) Operate strictly according to the instruction manual.
- (2) Do not use the cart on slop.
- (3) Do not allow people to sit or ride on the cart.
- (4) Keep feet and hand away from under the lowering table. Suggest to wear safety shoes during operation.
- (5) Do not transport the loads during the raising process.
- (6) Do not random regulate the safety valve.
- (7) The maintenance is to be performed by the professional person
- (8) Failure to operate the cart will cause the damage to the person health or property loss.
- (9) The cart must used in the rated capacity, it is not permit to load the heavy goods that the rated capacity of the cart.

T75 Hand-hydraulic Table Truck



CART - 1750

No.	Description	Q'ty	No.	Description	Q'ty	No.	Description	Q'ty
1	Table	1	44	C-ring	2	[3]	O-ring	1
2	Link Assembly	1	45	Dust Cover	8	[4]	Lift Piston	1
3	Up Link Shaft	1	46	Semicircle Screw	2*	[5]	Piston	1
4	C-ring	4	47	Spring Washer	2*	[6]	O-ring	1
5	Roller Guide	4	48	Flat Washer	2*	[7]	Oil Seal	1
6	Down Link Shaft	1	49	Protect Cover	2*	[8]	C-ring	1
7	Hex Cap Bolt	1	50	Bearing	8	[9]	Hex Cap Plug	1
8	Spring Washer	1	51	Wheel	4	[10]	O-ring	1
9	C-ring	2	52	Shaft	4	[11]	Outer Cylinder Body	1
10	Rubber Cover	2*	53	Spring Pin	1	[12]	Adjust Pressure Cover	1
11	Support Rod	2*	54	Cylinder	1	[13]	Adjust Pressure Screw	1
12	Hex Cap Bolt	2*	55	Hex Cap Nut	1	[14]	O-ring	1
13	Hex Cap Nut	2*	56	Spring	1	[15]	Adjust Pressure Spring	1
14	Handle	1	57	Set Screw	1	[16]	Spring Seat	1
15	Big Washer	2	58	Hex Cap Screw	2	[17]	Steel Ball	1
16	Spring Washer	2	59	Spring Washer	2	[18]	Hex Cap Bolt	1
17	Hex Cap Bolt	2	60	Spring Pin	1	[19]	Steel Ball	1
18	Spring Pin	1	61	Draw Board	1	[20]	Taper Spring	1
19	Brake Handle	1	62	Support Holder	1	[21]	Steel Ball	1
20	Set Position Cover	1	63	Hex Cap Nut	1	[22]	Steel Ball	1
21	Brake Thread	1	64	Pressure Thread Screw	1	[23]	Top Rod	1
22	Frame Seat	1	65	C-ring	2	[24]	O-ring	1
23	Hex Cap Bolt	2	66	Joint Shaft	1	[25]	Spring	1
24	Hex Cap Nut	2	67	Support Rod	1	[26]	Steel Ball	1
25	Flat Washer	2	68	Hex Cap Bolt	2	[27]	Spring	1
26	Spring Washer	2	69	Hex Cap Nut	1	[28]	O-ring	1
27	Hex Cap Nut	2	70	Copper Joint Slice	1	[29]	Hex Cap Plug	1
28	Hex Cap Screw	2	71	Big Spring	1	[30]	O-ring	1
29	Cam	2	72	Spring Seat	1	[31]	Pump Cylinder	1
30	Brake Shaft	1	73	Link Slice	2	[32]	O-ring	1
31	Bushing	1	74	Lock Pin	2	[33]	Dust Cover	1
32	Brake Foot Pedal	1	75	Shaft	1	[34]	Oil Seal	1
33	Hex Cap Screw	1	76	Shaft	1	[35]	Small Lift Piston	1
34	Hex Cap Nut	1	77	Separate Cover	1	[36]	Inter Cylinder Body	1
35	Big Washer	2	78	Foot Pedal Holder	1	[37]	Filter	1
36	Spring Washer	2	79	Flat Washer	1	[38]	Washer (1)	1
37	Hex Cap Bolt	2	80	Spring Washer	1	[39]	Washer (2)	1
38	Nut	4	81	Hex Cap Bolt	1	[40]	O-ring	1
39	Bearing	2	82	Foot Pedal Rod	1	[41]	Lowering Valve	1
40	Bushing	2	83	Foot Pedal Cover	1	[42]	Valve	1
41	Taper Bearing	2						
42	Swivel Wheel Holder	2	[1]	Dust Cover	1	Remark: the parts with "*" is only CE type use.		
43	Brake Rod	2	[2]	Top Nut	1			

LIMITED WARRANTY

Vestil Manufacturing Corporation (“Vestil”) warrants this product to be free of defects in material and workmanship during the warranty period. *Our warranty obligation is to provide a replacement for a defective original part if the part is covered by the warranty, after we receive a proper request from the warrantee (you) for warranty service.*

Who may request service?

Only a warrantee may request service. *You are a warrantee if* you purchased the product from Vestil or from an authorized distributor AND Vestil has been fully paid.

What is an “original part”?

An original part is a part used to make the product as shipped to the warrantee.

What is a “proper request”?

A request for warranty service is proper if Vestil receives: 1) a photocopy of the Customer Invoice that displays the shipping date; AND 2) a written request for warranty service including your name and phone number. Send requests by any of the following methods:

Mail
Vestil Manufacturing Corporation
2999 North Wayne Street, PO Box 507
Angola, IN 46703

Fax
(260) 665-1339
Phone
(260) 665-7586

Email
sales@vestil.com

In the written request, list the parts believed to be defective and include the address where replacements should be delivered.

What is covered under the warranty?

After Vestil receives your request for warranty service, an authorized representative will contact you to determine whether your claim is covered by the warranty. Before providing warranty service, Vestil may require you to send the entire product, or just the defective part or parts, to its facility in Angola, IN. The warranty covers defects in the following *original* dynamic components: motors, hydraulic pumps, electronic controllers, switches and cylinders. It also covers defects in *original* parts that wear under normal usage conditions (“wearing parts”): bearings, hoses, wheels, seals, brushes, batteries, and the battery charger.

How long is the warranty period?

The warranty period for original components is 90 days. The warranty period begins on the date when Vestil ships the product to the warrantee. If the product was purchased from an authorized distributor, the period begins when the distributor ships the product. Vestil may extend the warranty period for products shipped from authorized distributors by *up to* 30 days to account for shipping time.

If a defective part is covered by the warranty, what will Vestil do to correct the problem?

Vestil will provide an appropriate replacement for any *covered* part. An authorized representative of Vestil will contact you to discuss your claim.

What is not covered by the warranty?

1. Labor;
2. Freight;
3. Occurrence of any of the following, which automatically voids the warranty:
 - Product misuse;
 - Negligent operation or repair;
 - Corrosion or use in corrosive environments;
 - Inadequate or improper maintenance;
 - Damage sustained during shipping;
 - Collisions or other incidental contacts causing damage to the product;
 - Unauthorized modifications: DO NOT modify the product IN ANY WAY without first receiving written authorization from Vestil. Modification(s) might make the product unsafe to use or might cause excessive and/or abnormal wear.

Do any other warranties apply to the product?

Vestil Manufacturing Corp. makes no other express warranties. All implied warranties are disclaimed to the extent allowed by law. Any implied warranty not disclaimed is limited in scope to the terms of this Limited Warranty.

