



## VESTIL MANUFACTURING CORP.

2999 North Wayne Street, P.O. Box 507, Angola, IN 46703

Telephone: (260) 665-7586 -or- Toll Free (800) 348-0868

Fax: (260) 665-1339

www.vestilmfg.com e-mail: [sales@vestil.com](mailto:sales@vestil.com)

# AIR-1500-D INSTRUCTION MANUAL



### Receiving instructions:

After delivery, IMMEDIATELY remove the packaging from the product in a manner that preserves the packaging and maintains the orientation of the product in the packaging; then inspect the product closely to determine whether it sustained damage during transport. **If damage is discovered during the inspection, immediately record a complete description of the damage on the bill of lading.** If the product is undamaged, discard the packaging.

### NOTES:

1) Compliance with laws, regulations, codes, and non-voluntary standards enforced in the location where the product is *used* is exclusively the responsibility of the owner/end-user.

2) VESTIL is **not liable** for any injury or property damage that occurs as a consequence of failing to apply either: a) the instructions in this manual; or b) information provided on labels affixed to the product. Neither is Vestil responsible for *any* consequential damages sustained as a result of failing to exercise sound judgment while assembling, installing, using or maintaining this product.

### Table of Contents

Hazard identification: explanation of signal words.....	2
Safety Guidelines.....	2
Exploded parts diagrams and bills of materials.....	3-7
Label placement diagram .....	8
Limited warranty.....	9

## HAZARD IDENTIFICATION: explanation of signal words

This manual uses SIGNAL WORDS to indicate the likelihood of personal injuries, as well as the probable seriousness of those injuries, if the product is misused in the ways described. Other signal words call attention to uses of the product likely cause property damage.

The signal words used appear below along with the meaning of each word:



Identifies a hazardous situation which, if not avoided, **WILL** result in **DEATH** or **SERIOUS INJURY**. Use of this signal word is limited to the most extreme situations.



Identifies a hazardous situation which, if not avoided, **COULD** result in **DEATH** or **SERIOUS INJURY**.



Indicates a hazardous situation which, if not avoided, **COULD** result in **MINOR** or **MODERATE** injury.



Identifies practices likely to result in product/property damage, such as operation that might damage the product.

Each person who assembles, installs, uses, or maintains this product should read the entire manual **and fully understand the directions in advance**. **If after reading the manual you do not understand an instruction, ask your supervisor or employer for clarification, because failure to adhere to the directions in this manual might result in serious personal injury.**

## SAFETY GUIDELINES

Vestil diligently strives to identify foreseeable hazards associated with the use of its products. However, material handling is inherently dangerous and no manual can address every conceivable risk. The end-user ultimately is responsible for exercising sound judgment at all times.



Electrocution might result if any part of the product contacts electrified wires. Reduce the likelihood of electrocution by applying **common sense**:

- DO NOT *contact* electrified wires with any part of this device, your body, or clothing.
- DO NOT use or store the product where contact with electrified wires is likely.
- Always inspect the usage area before using the product & implement precautions that account for conditions.



If this product is used improperly or carelessly, the operator and/or bystanders might sustain serious personal injuries or even be killed. To reduce the likelihood of injury:

• ***Failure to read and understand the entire manual before assembling, installing, using or servicing the product is a misuse of the product.***

- Read the manual to refresh your understanding of proper use and maintenance procedures.
- DO NOT attempt to resolve any problem(s) with the product unless you are both authorized to do so and *certain* that it will be safe to use afterwards.
- DO NOT modify the product in any way UNLESS you first obtain written approval from Vestil. Unauthorized modifications automatically void the Limited Warranty and might make the product unsafe to use.
- DO NOT exceed the maximum rated load (see Label 287 on product).
- Inspect the product before each use.

A. DO NOT use this product if the inspection reveals structural damage. Examples of structural damage include, but are not limited to, the following: 1) Cracked, broken or significantly deformed load-bearing members; 2) cracked welds; 3) missing or deformed safety chain/strap; 3) corrosion, severe wear, or other condition that affects the ability of the product to support weight or itself. Replace each part that fails to pass an inspection, and DO NOT use the product until it is **fully** restored to normal condition.

B. DO NOT use the product if any unusual noise or movement is observed. If a malfunction occurs, remove the unit from service and notify your supervisor & maintenance personnel about the issue.

- DO NOT use this device UNLESS all product labels (see "Label Placement Diagram") are readable and undamaged.



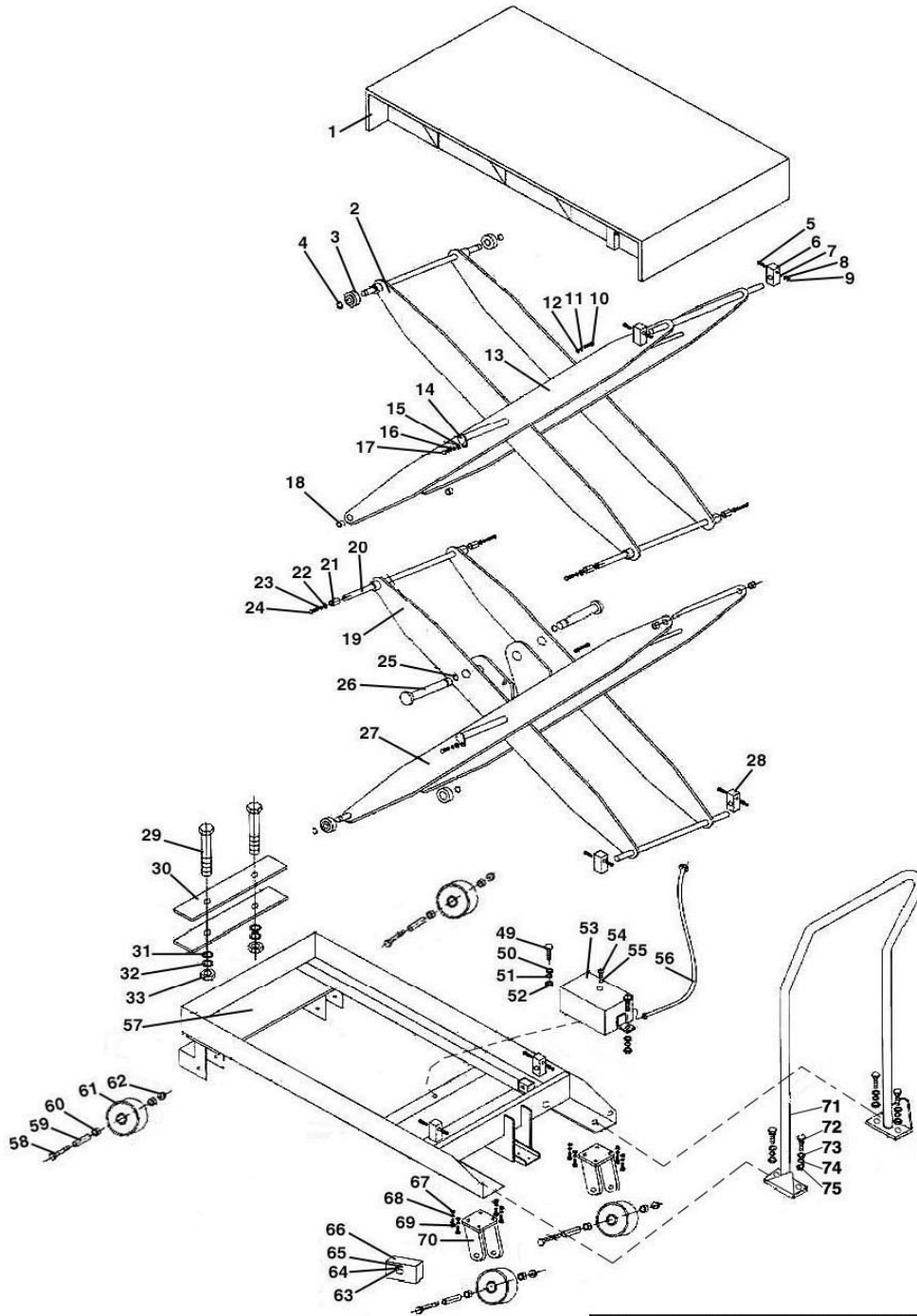
Proper use, maintenance, and storage are essential for this product to function properly.

- Always use this product in accordance with the instructions in this manual and consistent with any training relevant to machines, devices, etc. used in conjunction with this product.
- Keep the product clean & dry. Lubricate moving parts.
- FOR HYDRAULIC UNITS: Do not use brake fluid or jack oils in the hydraulic system. If oil is needed, use an anti-wear hydraulic oil with a viscosity grade of 150 SUS at 100°F, (ISO 32 cSt @ 40°C), or Dexron transmission fluid.
- Contact the manufacturer for MSDS information

# Exploded Parts Diagram and Bill of Materials

## AIR-1500-D (2015)

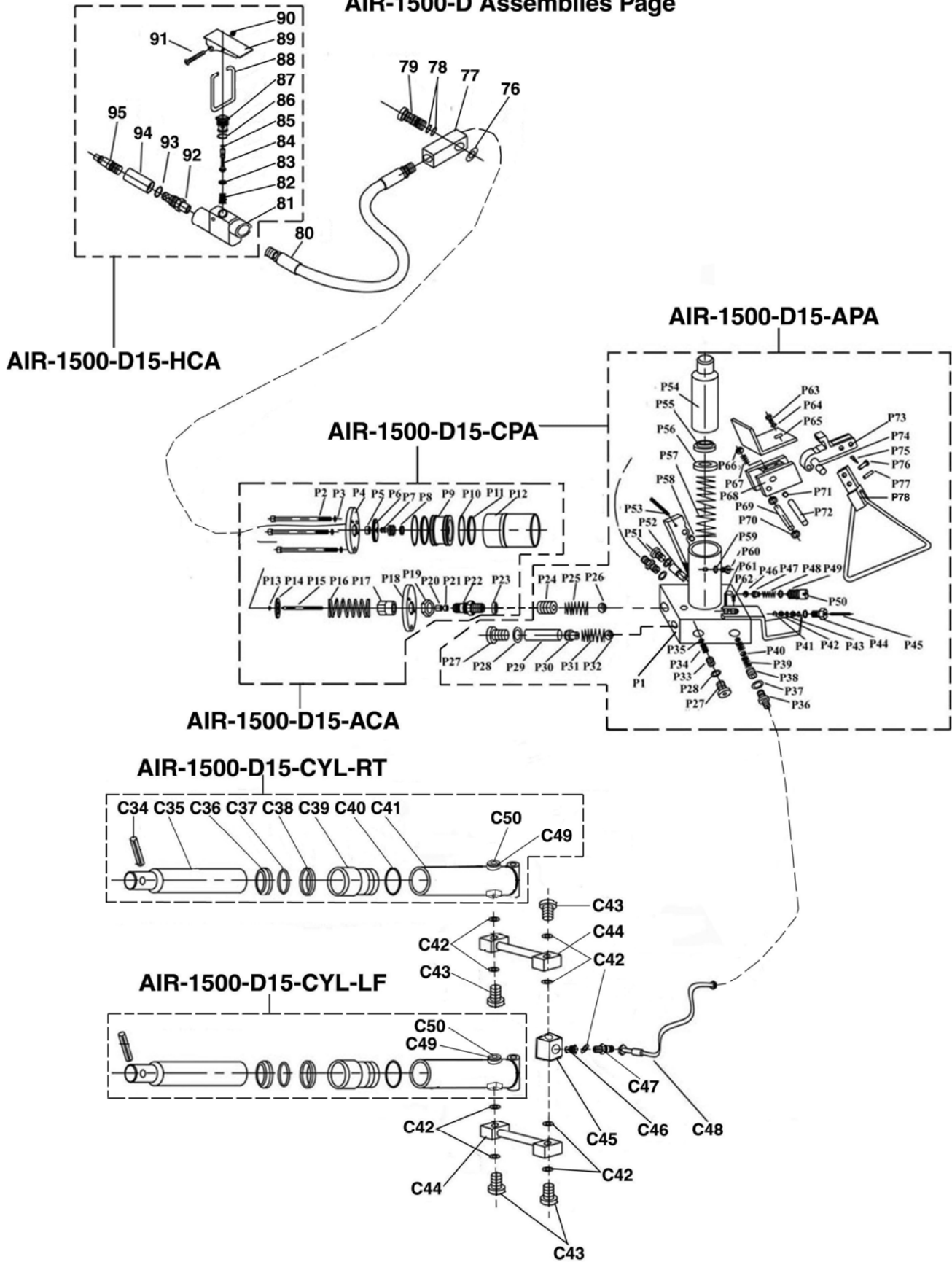
### Main Assembly



**NOTE: AIR-1500-D15-RC includes #61 only  
AIR-1500-D15-SC includes #58-66, 70**

# AIR-1500-D (2015)

## AIR-1500-D Assemblies Page



# AIR-1500-D (2015)

## Complete Parts List

Part No.	Description	Q'ty	Part No.	Description	Q'ty
AIR-1500-D15-1	Deck	1	AIR-1500-D15-P15	Rod, Piston	1
AIR-1500-D15-2	Scissors	1	AIR-1500-D15-P16	Spring	1
AIR-1500-D15-3	Roller, Guide	1	AIR-1500-D15-P17	Fitting, Threaded	1
AIR-1500-D15-4	Ring, Retaining	2	AIR-1500-D15-P18	Plate, Bottom	1
AIR-1500-D15-5	Bolt, Hex Head	1	AIR-1500-D15-P19	Washer, Rubber Coated	1
AIR-1500-D15-6	Block, Support	2	AIR-1500-D15-P20	Bushing	1
AIR-1500-D15-7	Washer, Flat	1	AIR-1500-D15-P21	Seal	1
AIR-1500-D15-8	Washer, Lock	1	AIR-1500-D15-P22	Connector, Threaded	1
AIR-1500-D15-9	Nut, Nylon Lock	1	AIR-1500-D15-P23	O-Ring	11
AIR-1500-D15-10	Bolt, Hex Head	1	AIR-1500-D15-P24	Screw, Jam	1
AIR-1500-D15-11	Washer, Lock	1	AIR-1500-D15-P25	Spring, Taper	1
AIR-1500-D15-12	Washer, Flat	1	AIR-1500-D15-P26	Ball, Steel	1
AIR-1500-D15-13	Scissor	1	AIR-1500-D15-P27	Plug, Threaded	1
AIR-1500-D15-14	Shaft	1	AIR-1500-D15-P28	O-Ring	1
AIR-1500-D15-15	Washer, Flat	1	AIR-1500-D15-P29	Shaft	1
AIR-1500-D15-16	Washer, Lock	1	AIR-1500-D15-P30	Seat, Spring	1
AIR-1500-D15-17	Bolt, Hex Head	1	AIR-1500-D15-P31	Spring	1
AIR-1500-D15-18	Shaft Couner	1	AIR-1500-D15-P32	Ball, Steel	1
AIR-1500-D15-19	Scissor	1	AIR-1500-D15-P33	Screw, Jam	1
AIR-1500-D15-20	Shaft	1	AIR-1500-D15-P34	Spring, Taper	1
AIR-1500-D15-21	Bushing	2	AIR-1500-D15-P35	Ball, Steel	1
AIR-1500-D15-22	Washer, Flat	2	AIR-1500-D15-P36	Connector, Threaded	1
AIR-1500-D15-23	Washer, Lock	2	AIR-1500-D15-P37	O-Ring	1
AIR-1500-D15-24	Bolt, Hex Head	2	AIR-1500-D15-P38	Plug	1
AIR-1500-D15-25	Ring, Retaining	2	AIR-1500-D15-P39	Spring	1
AIR-1500-D15-26	Shaft	2	AIR-1500-D15-P40	Ball, Steel	1
AIR-1500-D15-27	Scissors	1	AIR-1500-D15-P41	C-Ring	1
AIR-1500-D15-28	Block, Support	2	AIR-1500-D15-P42	O-Ring	1
AIR-1500-D15-29	Bolt, Hex Head	2	AIR-1500-D15-P43	O-Ring	1
AIR-1500-D15-30	Bracket, Cylinder	2	AIR-1500-D15-P44	Plug	1
AIR-1500-D15-31	Washer, Flat	2	AIR-1500-D15-P45	Rod, Top	1
AIR-1500-D15-32	Washer, Lock	2	AIR-1500-D15-P46	Ball, Steel	1
AIR-1500-D15-33	Nut, Hex	2	AIR-1500-D15-P47	Seat, Spring	1
AIR-1500-D15-49	Bolt, Hex Head	2	AIR-1500-D15-P48	Spring, Pressure	1
AIR-1500-D15-50	Washer, Flat	2	AIR-1500-D15-P49	O-Ring	1
AIR-1500-D15-51	Washer, Lock	2	AIR-1500-D15-P50	Spring, Pressure	1
AIR-1500-D15-52	Nut, Hex	2	AIR-1500-D15-P51	Plug	1
AIR-1500-D15-53	Tank, Oil	1	AIR-1500-D15-P52	Valve, Lowering	1
AIR-1500-D15-54	Plug, Oil Fill	1	AIR-1500-D15-P53	Spring Pin	1
AIR-1500-D15-55	O-Ring	1	AIR-1500-D15-P54	Piston, Pump	1
AIR-1500-D15-56	Hose, Oil	1	AIR-1500-D15-P55	Seal	1
AIR-1500-D15-57	Frame	1	AIR-1500-D15-P56	Oil Seal	1
AIR-1500-D15-58	Bolt, Hex Head	2	AIR-1500-D15-P57	Spring	1
AIR-1500-D15-59	Bushing	2	AIR-1500-D15-P58	Bushing	1
AIR-1500-D15-60	Cover, Dust	4	AIR-1500-D15-P59	O-Ring	1
AIR-1500-D15-61	Wheel	4	AIR-1500-D15-P60	Roll, Steel Head	1
AIR-1500-D15-62	Nut, Nylon Lock	2	AIR-1500-D15-P61	Pin, Spring	1
AIR-1500-D15-63	Screw, Phillips Head Machine	2	AIR-1500-D15-P62	Screw	1
AIR-1500-D15-64	Washer, Lock	2	AIR-1500-D15-P63	Screw	1
AIR-1500-D15-65	Washer, Flat	2	AIR-1500-D15-P64	Washer	1
AIR-1500-D15-66	Cover, Wheel	2	AIR-1500-D15-P65	Lever, Speed	1
AIR-1500-D15-67	Washer, Flat	8	AIR-1500-D15-P66	Ball, Steel	1
AIR-1500-D15-68	Washer, Lock	8	AIR-1500-D15-P67	Spring	1
AIR-1500-D15-69	Bolt, Hex Head	8	AIR-1500-D15-P68	Block	1
AIR-1500-D15-70	Frame, Swivel Wheel	2	AIR-1500-D15-P69	Shaft	1
AIR-1500-D15-71	Handle	1	AIR-1500-D15-P70	Bushing	2
AIR-1500-D15-72	Bolt, Hex Head	4	AIR-1500-D15-P71	Bushing	2
AIR-1500-D15-73	Washer, Flat	4	AIR-1500-D15-P72	Shaft	1
AIR-1500-D15-74	Washer, Lock	4	AIR-1500-D15-P73	Seat, Press Wheel	1
AIR-1500-D15-75	Nut, Nylon Lock	4	AIR-1500-D15-P74	Wheel, Press	1
AIR-1500-D15-76	E-Clip	1	AIR-1500-D15-P75	Pin	1
AIR-1500-D15-77	Connector	1	AIR-1500-D15-P76	Shaft	1
AIR-1500-D15-78	O-Ring	1	AIR-1500-D15-P77	Shaft	1
AIR-1500-D15-79	Plug	1	AIR-1500-D15-P78	Pedal, Foot	1
AIR-1500-D15-80	Hose, Air	1			
AIR-1500-D15-81	Body, Hand Control	1	AIR-1500-D15-C34	Spring Pin	2
AIR-1500-D15-82	Spring	1	AIR-1500-D15-C35	Lift Piston	2
AIR-1500-D15-83	Oil Seal	1	AIR-1500-D15-C36	Dust Cover	2
AIR-1500-D15-84	Valve Core	1	AIR-1500-D15-C37	O-Ring	2
AIR-1500-D15-85	O-Ring	1	AIR-1500-D15-C38	Oil Seal	2
AIR-1500-D15-86	O-Ring	1	AIR-1500-D15-C39	Nut, Gland	2
AIR-1500-D15-87	Plug	1	AIR-1500-D15-C40	O-Ring	2
AIR-1500-D15-88	Prop	1	AIR-1500-D15-C41	Housing, Cylinder	2
AIR-1500-D15-89	Liner	1	AIR-1500-D15-C42	Washer, Rubber Coated	8
AIR-1500-D15-90	Set Nut	1	AIR-1500-D15-C43	Connector, Threaded	4
AIR-1500-D15-91	Screw	1	AIR-1500-D15-C44	Pipe, Steel Oil	2
AIR-1500-D15-92	Connect, Male Quick	1	AIR-1500-D15-C45	Block, Connector	1
AIR-1500-D15-93	O-Ring	1	AIR-1500-D15-C46	Fuse, Velocity	1
AIR-1500-D15-94	Housing, Female Connector	1	AIR-1500-D15-C47	Connector, Threaded	1
AIR-1500-D15-95	Connector, Female	1	AIR-1500-D15-C48	Hose, Oil	1
			AIR-1500-D15-C49	O-Ring	2
			AIR-1500-D15-C50	Plug, Air Bleed	2
AIR-1500-D15-P1	Body, Pump	1			
AIR-1500-D15-P2	Bolt, Socket Head	3			
AIR-1500-D15-P3	Washer, Lock	3	AIR-1500-D15-HCA	Assembly, Hand Control	1
AIR-1500-D15-P4	Plate, Top	1	AIR-1500-D15-CYL-LF	Assembly, Cylinder (Left)	1
AIR-1500-D15-P5	Grommet	1	AIR-1500-D15-CYL-RT	Assembly, Cylinder (Right)	1
AIR-1500-D15-P6	Cover, Threaded	1	AIR-1500-D15-CYL-SK	Kit, Cylinder Seal	1
AIR-1500-D15-P7	Plunger	1	AIR-1500-D15-CPA	Assembly, Complete Pump	1
AIR-1500-D15-P8	Oil Seal	1	AIR-1500-D15-CPA-SK	Kit, Complete Pump Seal	1
AIR-1500-D15-P9	Piston, Plastic	1	AIR-1500-D15-APA	Assembly, Pump w/o Canister	1
AIR-1500-D15-P10	O-Ring	2	AIR-1500-D15-ACA	Assembly, Canister	1
AIR-1500-D15-P11	O-Ring	2	AIR-1500-D15-ACA-SK	Kit, Canister Seal	1
AIR-1500-D15-P12	Housing, Cylinder	1	AIR-1500-D15-SC	Assembly, Swivel Caster (includes #58-66, #70)	1
AIR-1500-D15-P13	Nut, Nylon Lock	1	AIR-1500-D15-RC	Assembly, Rigid Caster (includes #61 only)	1
AIR-1500-D15-P14	Seat, Spring	1			

**AIR-1500-D (2015)****Main Assembly Parts List**

Part No.	Description	Q'ty	Part No.	Description	Q'ty
AIR-1500-D15-1	Deck	1	AIR-1500-D15-57	Frame	1
AIR-1500-D15-2	Scissors	1	AIR-1500-D15-58	Bolt, Hex Head	2
AIR-1500-D15-3	Roller, Guide	1	AIR-1500-D15-59	Bushing	2
AIR-1500-D15-4	Ring, Retaining	2	AIR-1500-D15-60	Cover, Dust	4
AIR-1500-D15-5	Bolt, Hex Head	1	AIR-1500-D15-61	Wheel	4
AIR-1500-D15-6	Block, Support	2	AIR-1500-D15-62	Nut, Nylon Lock	2
AIR-1500-D15-7	Washer, Flat	1	AIR-1500-D15-63	Screw, Phillips Head Machine	2
AIR-1500-D15-8	Washer, Lock	1	AIR-1500-D15-64	Washer, Lock	2
AIR-1500-D15-9	Nut, Nylon Lock	1	AIR-1500-D15-65	Washer, Flat	2
AIR-1500-D15-10	Bolt, Hex Head	1	AIR-1500-D15-66	Cover, Wheel	2
AIR-1500-D15-11	Washer, Lock	1	AIR-1500-D15-67	Washer, Flat	8
AIR-1500-D15-12	Washer, Flat	1	AIR-1500-D15-68	Washer, Lock	8
AIR-1500-D15-13	Scissor	1	AIR-1500-D15-69	Bolt, Hex Head	8
AIR-1500-D15-14	Shaft	1	AIR-1500-D15-70	Frame, Swivel Wheel	2
AIR-1500-D15-15	Washer, Flat	1	AIR-1500-D15-71	Handle	1
AIR-1500-D15-16	Washer, Lock	1	AIR-1500-D15-72	Bolt, Hex Head	4
AIR-1500-D15-17	Bolt, Hex Head	1	AIR-1500-D15-73	Washer, Flat	4
AIR-1500-D15-18	Shaft Cover	1	AIR-1500-D15-74	Washer, Lock	4
AIR-1500-D15-19	Scissor	1	AIR-1500-D15-75	Nut, Nylon Lock	4
AIR-1500-D15-20	Shaft	1	AIR-1500-D15-76	E-Clip	1
AIR-1500-D15-21	Bushing	2	AIR-1500-D15-77	Connector	1
AIR-1500-D15-22	Washer, Flat	2	AIR-1500-D15-78	O-Ring	1
AIR-1500-D15-23	Washer, Lock	2	AIR-1500-D15-79	Plug	1
AIR-1500-D15-24	Bolt, Hex Head	2	AIR-1500-D15-80	Hose, Air	1
AIR-1500-D15-25	Ring, Retaining	2	AIR-1500-D15-81	Body, Hand Control	1
AIR-1500-D15-26	Shaft	2	AIR-1500-D15-82	Spring	1
AIR-1500-D15-27	Scissors	1	AIR-1500-D15-83	Oil Seal	1
AIR-1500-D15-28	Block, Support	2	AIR-1500-D15-84	Valve Core	1
AIR-1500-D15-29	Bolt, Hex Head	2	AIR-1500-D15-85	O-Ring	1
AIR-1500-D15-30	Bracket, Cylinder	2	AIR-1500-D15-86	O-Ring	1
AIR-1500-D15-31	Washer, Flat	2	AIR-1500-D15-87	Plug	1
AIR-1500-D15-32	Washer, Lock	2	AIR-1500-D15-88	Prop	1
AIR-1500-D15-33	Nut, Hex	2	AIR-1500-D15-89	Lever	1
AIR-1500-D15-49	Bolt, Hex Head	2	AIR-1500-D15-90	Set Nut	1
AIR-1500-D15-50	Washer, Flat	2	AIR-1500-D15-91	Screw	1
AIR-1500-D15-51	Washer, Lock	2	AIR-1500-D15-92	Connect, Male Quick	1
AIR-1500-D15-52	Nut, Hex	2	AIR-1500-D15-93	O-Ring	1
AIR-1500-D15-53	Tank, Oil	1	AIR-1500-D15-94	Housing, Female Connector	1
AIR-1500-D15-54	Plug, Oil Fill	1	AIR-1500-D15-95	Connector, Female	1
AIR-1500-D15-55	O-Ring	1	AIR-1500-D15-5C	Assembly, Swivel Caster (includes #58-66, #70)	1
AIR-1500-D15-56	Hose, Oil	1	AIR-1500-D15-RC	Assembly, Rigid Caster (includes #61 only)	1

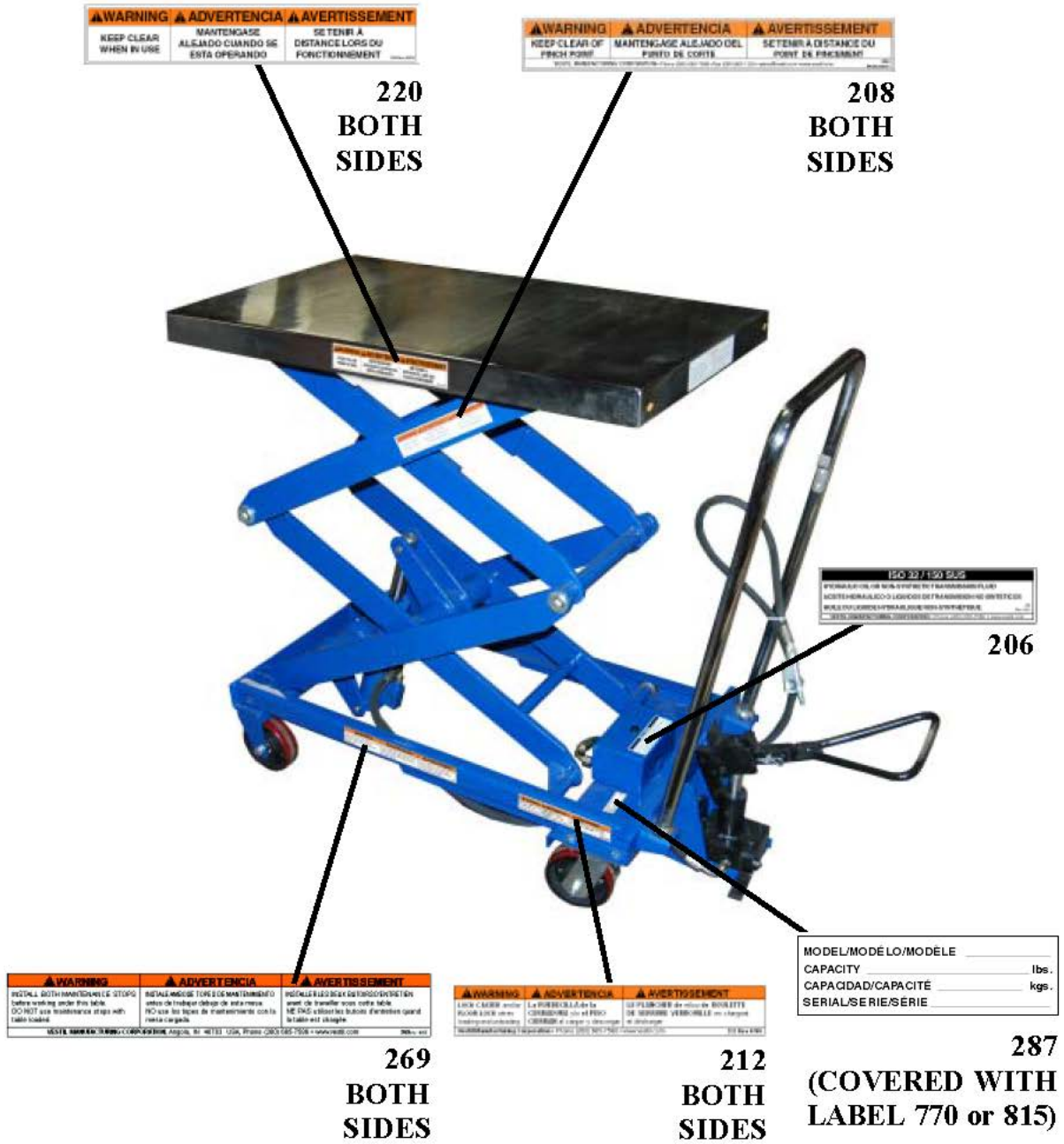
# AIR-1500-D (2015)

## Pump (P), Cylinder (C), & Assemblies Parts List

Part No.	Description	Q'ty	Part No.	Description	Q'ty
AIR-1500-D15-P1	Body, Pump	1	AIR-1500-D15-P55	Seal	1
AIR-1500-D15-P2	Bolt, Socket Head	3	AIR-1500-D15-P56	Oil Seal	1
AIR-1500-D15-P3	Washer, Lock	3	AIR-1500-D15-P57	Spring	1
AIR-1500-D15-P4	Plate, Top	1	AIR-1500-D15-P58	Bushing	1
AIR-1500-D15-P5	Grommet	1	AIR-1500-D15-P59	O-Ring	1
AIR-1500-D15-P6	Cover, Threaded	1	AIR-1500-D15-P60	Bolt, Socket Head	1
AIR-1500-D15-P7	Plunger	1	AIR-1500-D15-P61	Pin, Spring	1
AIR-1500-D15-P8	Oil Seal	1	AIR-1500-D15-P62	Screw	1
AIR-1500-D15-P9	Piston, Plastic	1	AIR-1500-D15-P63	Screw	1
AIR-1500-D15-P10	O-Ring	2	AIR-1500-D15-P64	Washer	1
AIR-1500-D15-P11	O-Ring	2	AIR-1500-D15-P65	Lever, Speed	1
AIR-1500-D15-P12	Housing, Cylinder	1	AIR-1500-D15-P66	Ball, Steel	1
AIR-1500-D15-P13	Nut, Nylon Lock	1	AIR-1500-D15-P67	Spring	1
AIR-1500-D15-P14	Seat, Spring	1	AIR-1500-D15-P68	Block	1
AIR-1500-D15-P15	Rod, Piston	1	AIR-1500-D15-P69	Shaft	1
AIR-1500-D15-P16	Spring	1	AIR-1500-D15-P70	Bushing	2
AIR-1500-D15-P17	Fitting, Threaded	1	AIR-1500-D15-P71	Bushing	2
AIR-1500-D15-P18	Plate, Bottom	1	AIR-1500-D15-P72	Shaft	1
AIR-1500-D15-P19	Washer, Rubber Coated	1	AIR-1500-D15-P73	Seat, Press Wheel	1
AIR-1500-D15-P20	Bushing	1	AIR-1500-D15-P74	Wheel, Press	1
AIR-1500-D15-P21	Seal	1	AIR-1500-D15-P75	Pin	1
AIR-1500-D15-P22	Connector, Threaded	1	AIR-1500-D15-P76	Shaft	1
AIR-1500-D15-P23	O-Ring	11	AIR-1500-D15-P77	Shaft	1
AIR-1500-D15-P24	Screw, Jam	1	AIR-1500-D15-P78	Pedal, Foot	1
AIR-1500-D15-P25	Spring, Taper	1			
AIR-1500-D15-P26	Ball, Steel	1	AIR-1500-D15-C34	Spring Pin	2
AIR-1500-D15-P27	Plug, Threaded	1	AIR-1500-D15-C35	Lift Piston	2
AIR-1500-D15-P28	O-Ring	1	AIR-1500-D15-C36	Dust Cover	2
AIR-1500-D15-P29	Shaft	1	AIR-1500-D15-C37	O-Ring	2
AIR-1500-D15-P30	Seat, Spring	1	AIR-1500-D15-C38	Oil Seal	2
AIR-1500-D15-P31	Spring	1	AIR-1500-D15-C39	Nut, Gland	2
AIR-1500-D15-P32	Ball, Steel	1	AIR-1500-D15-C40	O-Ring	2
AIR-1500-D15-P33	Screw, Jam	1	AIR-1500-D15-C41	Housing, Cylinder	2
AIR-1500-D15-P34	Spring, Taper	1	AIR-1500-D15-C42	Washer, Rubber Coated	8
AIR-1500-D15-P35	Ball, Steel	1	AIR-1500-D15-C43	Connector, Threaded	4
AIR-1500-D15-P36	Connector, Threaded	1	AIR-1500-D15-C44	Pipe, Steel Oil	2
AIR-1500-D15-P37	O-Ring	1	AIR-1500-D15-C45	Block, Connector	1
AIR-1500-D15-P38	Plug	1	AIR-1500-D15-C46	Fuse, Velocity	1
AIR-1500-D15-P39	Spring	1	AIR-1500-D15-C47	Connector, Threaded	1
AIR-1500-D15-P40	Ball, Steel	1	AIR-1500-D15-C48	Hose, Oil	1
AIR-1500-D15-P41	C-Ring	1	AIR-1500-D15-C49	O-Ring	2
AIR-1500-D15-P42	O-Ring	1	AIR-1500-D15-C50	Plug, Air Bleed	2
AIR-1500-D15-P43	O-Ring	1			
AIR-1500-D15-P44	Plug	1	AIR-1500-D15-HCA	Assembly, Hand Control	1
AIR-1500-D15-P45	Rod, Top	1	AIR-1500-D15-CYL-LF	Assembly, Cylinder (Left)	1
AIR-1500-D15-P46	Ball, Steel	1	AIR-1500-D15-CYL-RT	Assembly, Cylinder (Right)	1
AIR-1500-D15-P47	Seat, Spring	1	AIR-1500-D15-CYL-SK	Kit, Cylinder Seal	1
AIR-1500-D15-P48	Spring, Pressure	1	AIR-1500-D15-CPA	Assembly, Complete Pump	1
AIR-1500-D15-P49	O-Ring	1	AIR-1500-D15-CPA-SK	Kit, Complete Pump Seal	1
AIR-1500-D15-P50	Spring, Pressure	1	AIR-1500-D15-APA	Assembly, Pump w/o Canister	1
AIR-1500-D15-P51	Plug	1	AIR-1500-D15-ACA	Assembly, Canister	1
AIR-1500-D15-P52	Valve, Lowering	1	AIR-1500-D15-ACA-SK	Kit, Canister Seal	1
AIR-1500-D15-P53	Spring Pin	1			
AIR-1500-D15-P54	Piston, Pump	1			

# Label Placement Diagram

# AIR\_CART



# AIR HYDRAULIC CART



## LIMITED WARRANTY

Vestil Manufacturing Corporation (“Vestil”) warrants this product to be free of defects in material and workmanship during the warranty period. *Our warranty obligation is to provide a replacement for a defective original part if the part is covered by the warranty, after we receive a proper request from the warrantee (you) for warranty service.*

### Who may request service?

Only a warrantee may request service. *You are a warrantee if you purchased the product from Vestil or from an authorized distributor AND Vestil has been fully paid.*

### What is an “original part”?

An original part is a part used to make the product as shipped to the warrantee.

### What is a “proper request”?

A request for warranty service is proper if Vestil receives: 1) a photocopy of the Customer Invoice that displays the shipping date; AND 2) a written request for warranty service including your name and phone number. Send requests by any of the following methods:

Mail  
Vestil Manufacturing Corporation  
2999 North Wayne Street, PO Box 507  
Angola, IN 46703

Fax  
(260) 665-1339  
Phone  
(260) 665-7586

Email  
sales@vestil.com

In the written request, list the parts believed to be defective and include the address where replacements should be delivered.

### What is covered under the warranty?

After Vestil receives your request for warranty service, an authorized representative will contact you to determine whether your claim is covered by the warranty. Before providing warranty service, Vestil may require you to send the entire product, or just the defective part or parts, to its facility in Angola, IN. The warranty covers defects in the following *original* dynamic components: motors, hydraulic pumps, electronic controllers, switches and cylinders. It also covers defects in *original* parts that wear under normal usage conditions (“wearing parts”): bearings, hoses, wheels, seals, brushes, batteries, and the battery charger.

### How long is the warranty period?

The warranty period for original components is 90 days. The warranty period begins on the date when Vestil ships the product to the warrantee. If the product was purchased from an authorized distributor, the period begins when the distributor ships the product. Vestil may extend the warranty period for products shipped from authorized distributors by *up to 30 days* to account for shipping time.

### If a defective part is covered by the warranty, what will Vestil do to correct the problem?

Vestil will provide an appropriate replacement for any *covered* part. An authorized representative of Vestil will contact you to discuss your claim.

### What is not covered by the warranty?

1. Labor;
2. Freight;
3. Occurrence of any of the following, which automatically voids the warranty:
  - Product misuse;
  - Negligent operation or repair;
  - Corrosion or use in corrosive environments;
  - Inadequate or improper maintenance;
  - Damage sustained during shipping;
  - Collisions or other incidental contacts causing damage to the product;
  - Unauthorized modifications: DO NOT modify the product IN ANY WAY without first receiving written authorization from Vestil. Modification(s) might make the product unsafe to use or might cause excessive and/or abnormal wear.

### Do any other warranties apply to the product?

Vestil Manufacturing Corp. makes no other express warranties. All implied warranties are disclaimed to the extent allowed by law. Any implied warranty not disclaimed is limited in scope to the terms of this Limited Warranty.

