

Example application

Star-delta starters with circuit breaker and overload protection built into the circuit breaker



Thermal-magnetic
motor circuit breaker
TeSys GV7 RE/RS220

3 x TeSys LC1F225 contactor

110 kW, 400/415 V
50-60 Hz motor

Service and support from a global leader

Schneider Electric is a worldwide leader in electrical distribution, switching, and motor control. Let us help you coordinate a complete solution for all your motor switching applications.

- Worldwide sales, service, and engineering network with customization capabilities
- Local technical support featuring product application experts and service engineers
- Highly tailored supply chain with worldwide availability close to your production sites
- Dedicated application guide for HVAC+R, hoisting, and more



schneider-electric.com/TeSys

Life Is On

Schneider
Electric

The smart choice for demanding motor switching

TeSys F AC3 contactors
115 to 1000 A



schneider-electric.com/TeSys

Life Is On

Schneider
Electric

Schneider Electric

Head Office
35 rue Joseph Monier
92500 Rueil Malmaison Cedex- France
Tel.: +33 (0)1 41 29 70 00

www.schneider-electric.com

©2015 Schneider Electric. All Rights Reserved.
Schneider Electric, and TeSys are trademarks owned by Schneider Electric Industries SAS
or its affiliated companies. All other trademarks are property of their respective owners.
EDCED115053EN

This document has been
printed on recycled paper



Reliable switching for all AC3 applications

When it comes to motor control, requirements for switching are becoming more demanding in buildings, industry, and data centre environments. Whether it's for HVAC, hoisting, or other applications, you need contactors that you can trust will work reliably to avoid costly downtime. You also need components that meet your specifications while providing the best value, features, and quality.

300+ million

More than 300 million motors are used in industry, large buildings and in infrastructure globally, and 30 million new electric motors are sold each year for industrial purposes alone.

Source: The Institute for Industrial Productivity, Industrial Efficiency Technology Database

With a wide scope of current and control voltage ratings, the TeSys™ F AC3 range of contactors will satisfy all of your motor switching requirements.

90 years of experience and success in contactor technology has enabled a range of products designed for long electrical life, high performance switching, and Type 2 coordination. You'll also enjoy a space-optimized format that's easy to install and maintain.

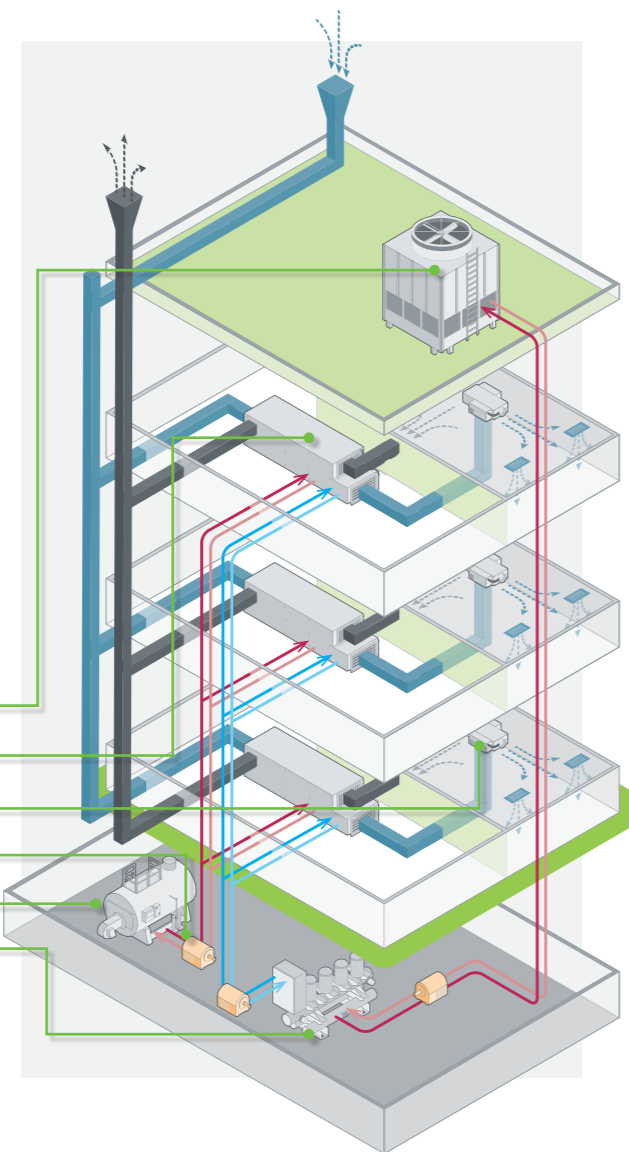
Ideal form, fit, and function

The TeSys F AC3 range of contactors is ideally suited to OEM and panel builders serving today's demanding motor control applications.

- Optimised size for reduced panel space
- Control for motor applications between 115 and 1000 A, at 440 VAC
- Multi-standard offer: guarantees compliance with international safety standards

HVAC&R installation illustrating association of various machines

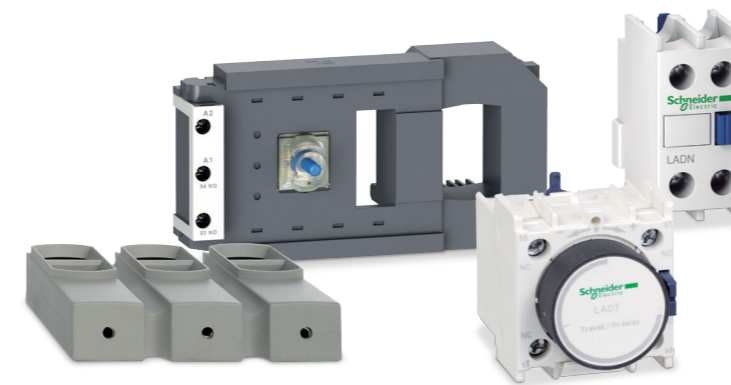
- 1 Cooling tower
- 2 Air handler
- 3 Terminal unit
- 4 Pump
- 5 Boiler
- 6 Water cooled chiller



Introducing the new TeSys F1000 contactor

The size of electric motors is increasing, especially in applications like HVAC+R for metro tunnels, and large industrial processes. In response, Schneider Electric is extending the TeSys range of block type contactors for AC3 duty.

- TeSys F1000 model supports up to 1000 A and 670 kW, at 440 VAC
- Footprint is similar to models F1400 through F2100, simplifying design and installation



TeSys F offers a wide range of auxiliaries and accessories.

TeSys F AC1 and AC3 ranges

The complete range of TeSys F AC3 contactors for motor switching is complemented with the TeSys F AC1 range of power switching contactors, dedicated to wind turbine, solar, UPS, and other resistive applications. The two ranges share many of the same benefits and accessories.



Contactor type	LC1F115	LC1F150	LC1F185	LC1F225	LC1F265	LC1F330	LC1F400	LC1F500	LC1F630	LC1F780	LC1F800	LC1F1000	LC1F1250	LC1F1400	LC1F1700	LC1F2100	LC1F2600	
Rated operational current, Ie AC3 ⁽¹⁾ ≤ 440V AC	115A	150A	185A	225A	265A	330A	400A	500A	630A	780A	800A	1000A	-	-	-	-	-	
Rated operational current, Ie AC1 ≤ 440V AC	200A	250A	275A	315A	350A	400A	500A	700A	1000A	1600A	1000A	1250A	1260A	1400A	1700A	2100A	2600A	
Rated operational voltage, Ue up to	1000V AC																	
Number of poles	3 & 4						2, 3 & 4			3 & 4		3						
Frequency limits, Hz of operational current ⁽²⁾	16 ^{2/3} ... 200																	
AC Rated control circuit voltage, Uc	24...1000V						48...1000V			110...500V		110...400V		110...500V		110...600V		110...500V
DC Rated control circuit voltage, Uc	24...460V						48...440V			110...440V		110...400V		110...440V		48...250V		110...440V
Width (mm) 3P contactor	163,5		168,5		201,5	213		233	309	702	309	438	309	438			519	

(1) Please refer to product catalogue for rated operational current, AC4 category

(2) Sine wave without interference

High reliability, safety, and durability

Long mechanical and electrical life and a consistent low-voltage architecture ensure low OPEX and safer, more reliable operation.

- Type 1 & 2 coordination with TeSys GV7 motor circuit breakers, or Compact™ and Masterpact™ circuit breakers: complete protection for the motor control system and components
- Fully tested, approved, and certified by national and international bodies: IEC, CCC, CSA, UL, etc.
- Complete, coordinated motor control solutions: TeSys F AC3 contactors, TeSys electronic overload relays and motor circuit breakers, protection offers, plus Schneider Electric electrical distribution and automation systems, and services
- Schneider Electric international manufacturer warranty is our promise of quality, providing complete peace of mind



Target applications

- Buildings
- Industry
- Data centres

Simple design, installation, and maintenance

Flexible, compatible components support your design requirements while reducing inventory, saving time and cost of installation, and ensuring maximum continuity of service.

- Wide range of auxiliaries and accessories
- Shared accessories across entire TeSys F AC1 and AC3 ranges
- Drawer-mounted coils reduce downtime and allow easy maintenance
- Similar frame sizes optimize panel size and reduce assembly time



Please contact your nearest sales office to know about:

- Pre-assembled reversing contactors
- Pre-assembled changeover contactors
- 3 pole vacuum contactors - TeSys V
- 3 pole shock proof contactors - TeSys FG
- Magnetic latching contactors - TeSys CR1F