

# Product data sheet

## Characteristics

# SU3040D400CB

Homeline All In One combination service entrance device, ringed socket, manual bypass, UG, 400 A, 25 kA, 30 spaces



### Main

Product or component type	All-In-One
Range of product	Homeline
Meter socket type	Ringed
Hub type	A-L

### Complementary

Line Rated Current	400 A
Short-circuit current	25 kA
Mounting	Surface Semi flush field installed flange kit
Number of spaces	30
Number of circuits	40
Number of Tandem Breakers	10
Electrical connection	Lugs service ground Studs line side
Wire Size	AWG 4...250 kcmil aluminium)service ground AWG 4...250 kcmil copper)service ground
Tightening torque	Terminal screw 250 lb.in, AWG 4...250 kcmil, aluminium/copper Service ground 50 lb.in, AWG 1/0, aluminium/copper Service ground 45 lb.in, AWG 6...AWG 1, aluminium/copper Service ground 40 lb.in, AWG 8, aluminium/copper Branch lugs 50 lb.in, AWG 3...AWG 2/0, aluminium/copper Branch lugs 35 lb.in, AWG 6...AWG 4, aluminium/copper Branch lugs 25 lb.in, AWG 8, aluminium/copper Branch lugs 20 lb.in, AWG 14...AWG 10, aluminium/copper Branch lugs 20 lb.in, AWG 12...AWG 10, aluminium/copper Cover 10 lb.in
Disconnect	Service disconnect (factory installed)
Disconnect Rating	200 A
Branch Breaker Rating	200 A
Service feed location	UG
Bypass type	Class 320 manual bypass
Width	28.25 in (717.55 mm)
Depth	7.50 in (190.50 mm)
Height	41.25 in (1047.75 mm)

### Environment

NEMA Rating	NEMA 3R
Product certifications	UL Listed

The information provided in this documentation contains general descriptions and/or technical characteristics of the performance of the products contained herein. This documentation is not intended as a substitute for and is not to be used for determining suitability or reliability of these products for specific user applications. It is the duty of any such user or integrator to perform the appropriate and complete risk analysis, evaluation and testing of the products with respect to the relevant specific application or use thereof. Neither Schneider Electric Industries SAS nor any of its affiliates or subsidiaries shall be responsible or liable for misuse of the information contained herein.

## Ordering and shipping details

Category	00148 - HOMELINE CSED DEVICES
Discount Schedule	DE3A
GTIN	00785901521792
Nbr. of units in pkg.	1
Package weight(Lbs)	112 lb(US) (50.80 kg)
Returnability	Yes
Country of origin	MX

## Packing Units

Package 1 Height	0.83 ft (0.254 m)
Package 1 width	2.42 ft (0.737 m)
Package 1 Length	3.50 ft (1.067 m)

## Offer Sustainability

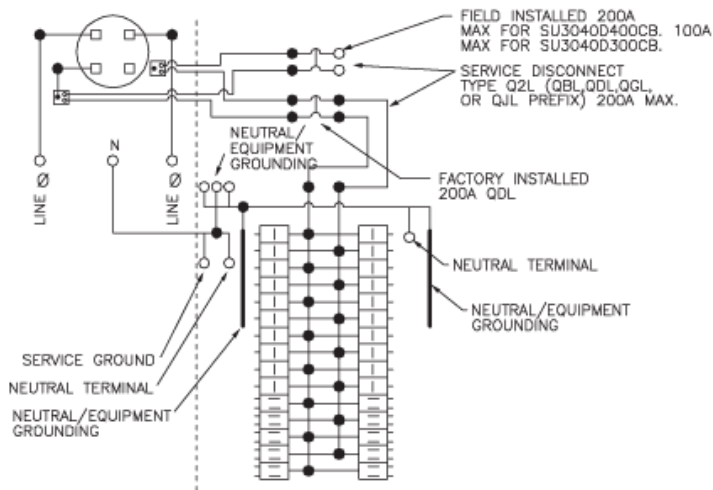
California proposition 65	WARNING: This product can expose you to chemicals including: Lead and lead compounds, which is known to the State of California to cause cancer and birth defects or other reproductive harm. For more information go to <a href="http://www.P65Warnings.ca.gov">www.P65Warnings.ca.gov</a>
REACH Regulation	<a href="#">REACH Declaration</a>
REACH free of SVHC	Yes
EU RoHS Directive	Compliant <a href="#">EU RoHS Declaration</a>
Mercury free	Yes
RoHS exemption information	<a href="#">Yes</a>
China RoHS Regulation	<a href="#">China RoHS Declaration</a>



## Contractual warranty

Warranty	18 months
----------	-----------



Connections and Wiring Diagrams



- 
 ONE SINGLE POLE, ONE PLUG-ON SPACE TYPE HOM ONLY. TWO POLE TYPE HOM OR HOMA (125A MAX.) MAY PLUG-ON TWO ADJACENT SPACES. TWO POLE TYPE HOMA (150-200A MAX.) MAY PLUG-ON FOUR ADJACENT SPACES (RIGHT SIDE ONLY).
- 
 TWO SINGLE POLE, ONE PLUG-ON SPACE TYPE HOMT OR ONE SINGLE POLE TYPE HOM. TWO POLE TYPE HOM OR HOMA (125A MAX.) MAY PLUG-ON TWO ADJACENT SPACES. TWO POLE TYPE HOMA (150-200A MAX.) MAY PLUG-ON FOUR ADJACENT SPACES (RIGHT SIDE ONLY).