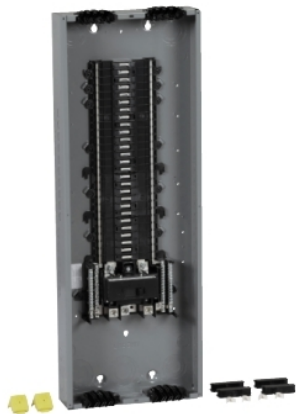


# Product data sheet

## Characteristics

# QO154M200PQ

Load center, QO, 1 phase, 54 spaces, 64 circuits, 200A convertible main breaker, PoN, NEMA1, Qwik-grip, UL



### Main

Marketing Trade Name	QO
Product Type	Load Center
Provided Equipment	Qwik grip assembly kit 1)

### Complementary

Tightening Torque	Cover: 20 lb.in
Load Center Type	Main breaker
Rated Current	200 A
Number of Spaces	54
Maximum Number of Single Pole Circuits	64
Maximum Number of Tandem Breakers	10
Number of Phases	1 phase
Ground Bar	Grounding bar (ordered separately)
Height	39.37 in (1000 mm)
Width	14.25 in (362 mm)
Depth	3.74 in (95 mm)

### Environment

Enclosure Rating	NEMA 1 for indoor
Ambient Air Temperature for Operation	23 °F (-5 °C) 104 °F (40 °C)
Product Certifications	UL Listed

### Ordering and shipping details

Category	10001 - QO PON 1PH LC,12-60 CKT, MB N1
Discount Schedule	DE3A
GTIN	00785901912743
Nbr. of units in pkg.	1
Package weight(Lbs)	24 lb(US) (10.89 kg)
Returnability	Yes
Country of origin	US

The information provided in this documentation contains general descriptions and/or technical characteristics of the performance of the products contained herein. This documentation is not intended as a substitute for and is not to be used for determining suitability or reliability of these products for specific user applications. It is the duty of any such user or integrator to perform the appropriate and complete risk analysis, evaluation and testing of the products with respect to the relevant specific application or use thereof. Neither Schneider Electric Industries SAS nor any of its affiliates or subsidiaries shall be responsible or liable for misuse of the information contained herein.

## Offer Sustainability

REACH Regulation	<a href="#">REACH Declaration</a>
REACH free of SVHC	Yes
EU RoHS Directive	Compliant <a href="#">EU RoHS Declaration</a>
Toxic heavy metal free	Yes
Mercury free	Yes
RoHS exemption information	<a href="#">Yes</a>
China RoHS Regulation	<a href="#">China RoHS Declaration</a>