

AQUARAIN

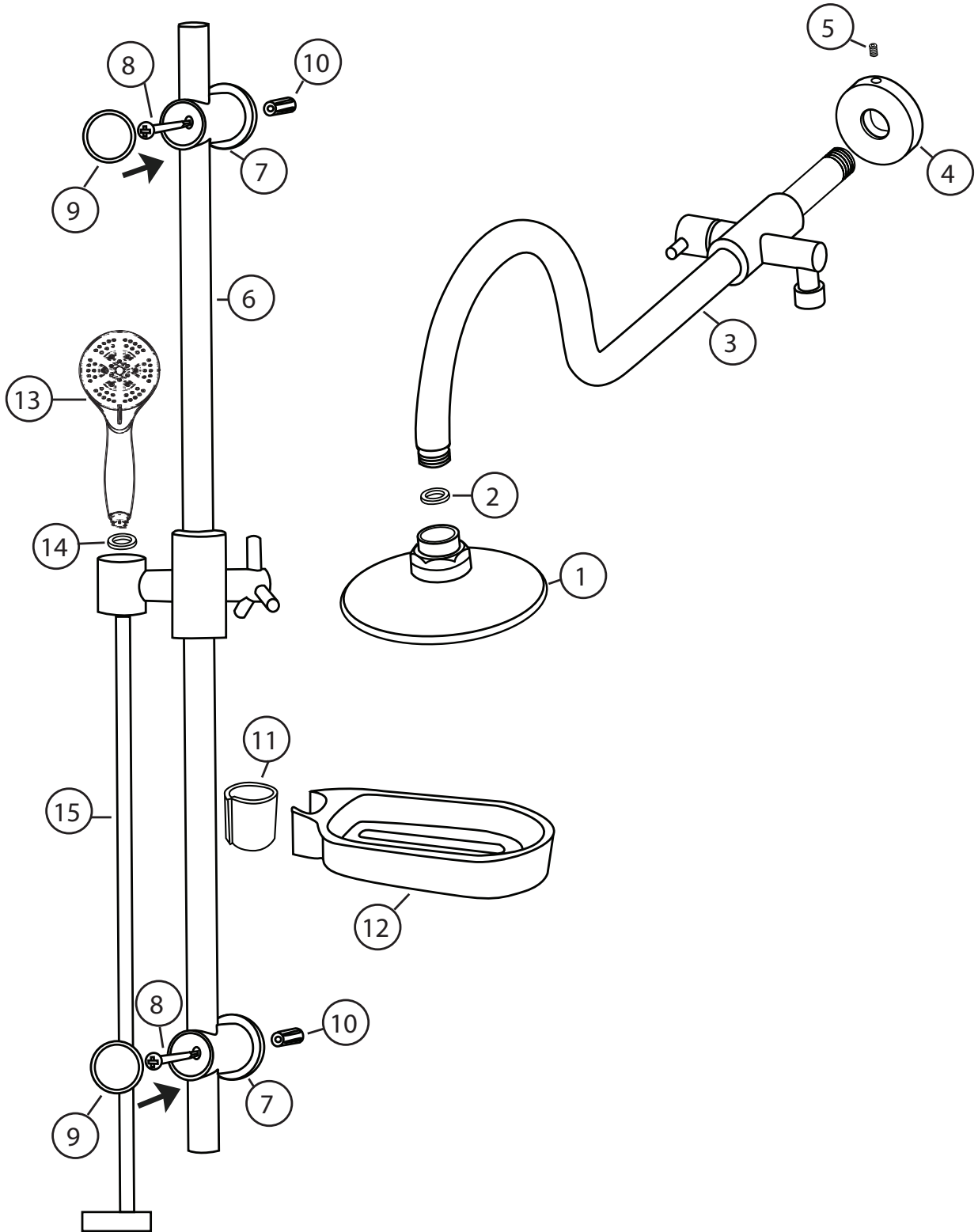


AquaRain Shower System Model #1019-BN & 1019-CH Owner's Manual



AquaRain Parts Legend

- | | | |
|------------------|------------------------------|--------------------------|
| 1. Shower Head | 6. Slide Bar | 11. Tapered Nylon Sleeve |
| 2. Screen Washer | 7. Slide Bar Mounts(2) | 12. Soap Dish |
| 3. AquaRain Body | 8. Screw 3.375"(2) | 13. Handshower |
| 4. Escutcheon | 9. Mount Covers.....(2) | 14. Rubber Washer |
| 5. Set Screw | 10. Wall Anchors(2) | 15. Handshower Hose |



Installation Instructions

Thank you for choosing the AquaRain Shower System by PULSE ShowerSpas!

Assembly and installation of the AquaRain Shower System is designed to be quick and easy. If you have installation questions or performance problems, call PULSE Customer Service toll free at 888-785-7320 or visit www.pulseshower spas.com.

Please read instructions carefully, become familiar with all parts, installation procedures and tools required. Follow steps in order presented to help avoid mistakes.

FOR NEW CONSTRUCTION OR COMPLETE REMODEL

• A hot/cold mixing valve is required (NOT INCLUDED)

TOOLS REQUIRED

Drill (preferably cordless), (1/4") 6mm masonry/tile drill bit, Phillips screwdriver, pipe wrench.

ASSEMBLY

1. Remove existing shower head and shower arm.
2. Wrap threads of shower pipe with Teflon tape and/or pipe sealant to ensure no leaks. (Diagram A)
3. Slide escutcheon over threaded shower pipe. (Diagram B)
4. Insert threaded pipe into female wall fitting and tighten securely. Use diverter body to tighten by hand or use a pipe wrench on inlet pipe closest to wall. (Diagram C)

CAUTION—DO NOT USE SHOWER ARM TO TIGHTEN

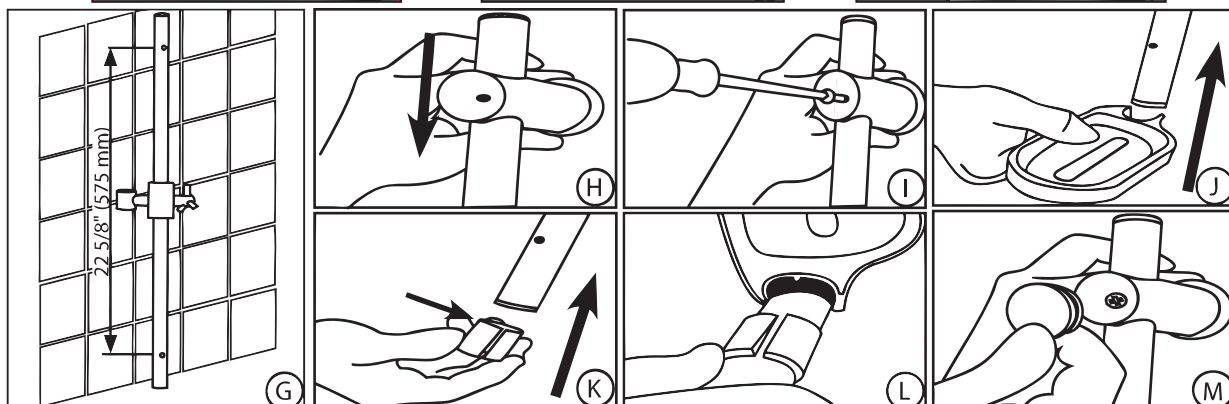
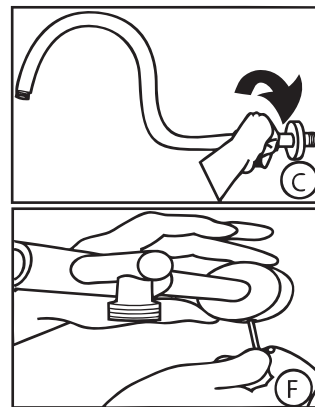
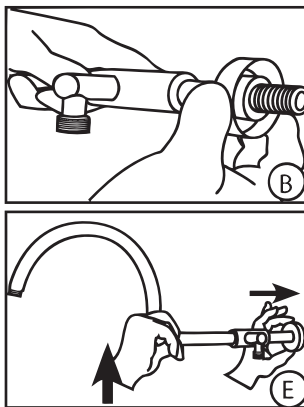
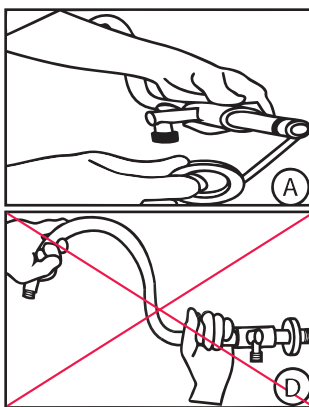
5. While gently pushing up on connection between shower arm and top tee to ensure AquaRain is level, slide escutcheon against wall. (Diagram E) Secure set screw. (Diagram F)

CAUTION—DO NOT OVER-TIGHTEN SET SCREW

6. Insert rubber washer in shower head and secure shower head to shower arm.
7. Hold Adjustable Slide Bar (6) in desired mounting location. Evaluate range of adjustment and potential interference of handshower hose (15) (Diagram G).
8. Mark wall for two mounting holes. Before drilling ensure no live plumbing can be damaged.
9. Slowly drill 1/4" (6mm) wide by 1" (25mm) deep holes 2 5/8 inch (575mm) apart. Make sure holes are plumb.

IMPORTANT: Supplied anchors are for solid surface only i.e. tile, marble etc. If mounting to hollow or fiberglass wall, a different anchor/screw and hole size may be required.

10. Insert wall anchors (10) until flush with wall. Slide top mount (7) over slide bar (Diagram H) and secure with screw (8) (Diagram I). Slide plastic soap dish (12) (Diagram J) onto slide bar followed by narrow end of tapered nylon sleeve (11) (Diagram K). Align tab on soap dish with slot on sleeve and push soap dish down until flush. (Diagram L)
11. Slide lower mount (7) over slide bar and secure screw (8).
12. Press covers (9) into mounts (7) (Diagram M).
13. Place washer (14) in hex head of hose (15) and connect to diverter outlet. Place washer (14) in tapered end of hose and connect handshower (13). Place hand shower into holder.



Usage

Diverter control switches from the shower head and hand shower functionality.

Turn face of hand shower to switch settings.

Adjust the hand shower position by loosening the hand shower hanger and sliding up or down.

Always turn cold water on first to help prevent any accidental burning or scalding; especially for children and elderly.

DO NOT use any part of the AquaRain Shower System as a support device.

Care and Maintenance

To keep your ShowerSpa looking new, wipe down after each use with a soft cotton cloth.

Protect your ShowerSpa from hard water stains and mineral deposits by periodically using an auto spray wax.

Clean using mild liquid soap and a non-abrasive sponge or cloth. Rinse with clean water.

*Do Not Use Any Kind Of
Chemicals Or Abrasives!*

Lifetime Limited Warranty

1. Defects Covered; Warranty Period. Pulse Shower Spas, Inc. ("Pulse") warrants to the original consumer purchaser who purchases this shower spa (the "Product") for use in his or her own home, that the Product will be free from defects in material and manufacturing workmanship for as long as the original consumer purchaser owns that same home. For all other purchasers (including, but not limited to purchasers for industrial, commercial and business use), the above warranty will apply for a period of 5 years from the original date of purchase.

2. Remedy. If the Product does not conform to the above warranty, Pulse, at its option, will repair or replace the Product, free of charge, or refund your purchase price. For warranty claims, please visit www.pulshower spas.com/index.php/warranty. Pulse may require that you return the Product to Pulse, shipping prepaid, in which case Pulse will provide you with a return materials authorization number (RMA). Pulse may also require that you provide evidence of the date you purchased the Product. Pulse will ship a new or repaired Product to you, at the expense of Pulse, or refund your purchase price. Service labor performed by you or others in connection with the removal or replacement of the Product will not be reimbursed by Pulse.

3. Exclusions. Pulse shall not be responsible for failure of the Product, and the above warranties will not apply, if the Product fails as a result of improper installation, improper use, modifications or repairs by anyone other than Pulse, or accident or abuse (including damage during shipment).

4. Warranty on Repairs and Replacements. For consumer purchasers who purchased the Product for home use, repaired or replacement Products will continue to be covered under this warranty for as long as he or she owns that same home. For other purchasers, repaired or replacement Products will be covered for the balance of the original warranty period.

5. No Other Warranties; Limitation of Liability. OTHER THAN THE LIFETIME LIMITED WARRANTY STATED ABOVE, PULSE DISCLAIMS ALL OTHER WARRANTIES, EXPRESS OR IMPLIED, INCLUDING BUT NOT LIMITED TO WARRANTIES OF MERCHANTABILITY AND FITNESS FOR A PARTICULAR PURPOSE, TO THE EXTENT PERMITTED BY APPLICABLE LAW. THE REMEDIES STATED ABOVE ARE YOUR SOLE REMEDIES IN CONNECTION WITH THIS WARRANTY. IN NO EVENT WILL PULSE BE LIABLE TO YOU FOR ANY DAMAGES, WHETHER DIRECT, INDIRECT, INCIDENTAL, SPECIAL OR CONSEQUENTIAL, INCLUDING BUT NOT LIMITED TO LOST PROFITS OR BUSINESS INTERRUPTION, ARISING OUT OF OR RELATING TO THE PRODUCT OR ITS USE, WHETHER UNDER A CONTRACT, WARRANTY, TORT, OR ANY OTHER CAUSE OF ACTION, EVEN IF PULSE HAS BEEN ADVISED OF THE POSSIBILITY OF SUCH DAMAGES. NOTWITHSTANDING THE TERM OF ANY LIMITED OR IMPLIED WARRANTY, OR IN THE EVENT THAT ANY LIMITED WARRANTY FAILS OF ITS ESSENTIAL PURPOSE, IN NO EVENT WILL PULSE'S ENTIRE LIABILITY EXCEED THE PURCHASE PRICE OF THE PRODUCT. SOME STATES AND PROVINCES DO NOT ALLOW THE EXCLUSION OR LIMITATION OF INCIDENTAL OR CONSEQUENTIAL DAMAGES SO THE ABOVE LIMITATIONS OR EXCLUSIONS MAY NOT APPLY TO YOU. THIS LIMITED WARRANTY GIVES YOU SPECIFIC LEGAL RIGHTS, AND YOU MAY ALSO HAVE OTHER RIGHTS WHICH VARY FROM STATE TO STATE AND PROVINCE TO PROVINCE.

