

# INSTALLATION INSTRUCTIONS CARE AND MAINTENANCE



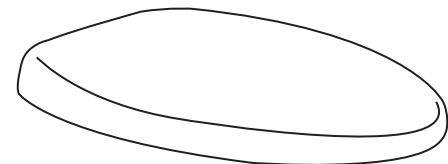
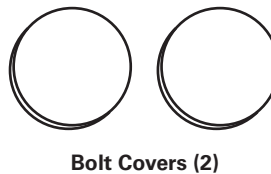
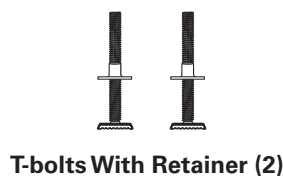
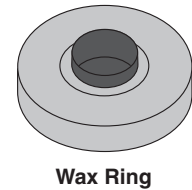
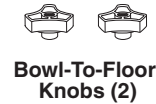
## Ultima II Dual Flush Elongated 1-piece Toilet Model 2996C.200

**Important, retain for future reference: Read Carefully**

Thank you for selecting American Standard - the benchmark of fine quality for over 100 years. To ensure this product is installed properly, please read these instructions carefully before you begin. (Certain installations may require professional help.) Also be sure your installation conforms to local codes.

**⚠ CAUTION: PRODUCT IS FRAGILE. TO AVOID BREAKAGE AND POSSIBLE INJURY HANDLE WITH CARE!**  
NOTE: Pictures may not exactly define contour of china and components.

### INSIDE THE BOX



\* For seat installation, see instructions included with seat.

### RECOMMENDED TOOLS NOT INCLUDED



ADJUSTABLE WRENCH



REGULAR SCREWDRIVER



PHILLIPS SCREWDRIVER



TAPE MEASURE

### CUSTOMER SERVICE INFORMATION

**In the United States:**

American Standard Brands  
P.O. Box 6820  
Piscataway, New Jersey 08855  
Attention: Director of Customer Care

For residents of the United States, warranty information may also be obtained by calling the following toll free number: (800) 442-1902

[www.americanstandard.com](http://www.americanstandard.com)

M-F 8:00 am - 8:00 pm EST  
Sat 8:00 am - 6:00 pm EST  
English speaking, Select associates  
bilingual English/Spanish

**In Canada:**

AS Canada, ULC  
5900 Avebury Rd.  
Mississauga, Ontario  
Canada L5R 3M3

Toll Free: (800) 387-0369

[www.americanstandard.ca](http://www.americanstandard.ca)

M-F 8:00 to 16:00 EST  
French and English  
speaking associates

**In Mexico:**

American Standard B&K Mexico  
S. de R.L. de C.V.  
Via Morelos #330  
Col. Santa Clara  
Ecatepec 55540 Edo. Mexico

Toll Free: 01-800-839-1200

[www.americanstandard.com.mx](http://www.americanstandard.com.mx)

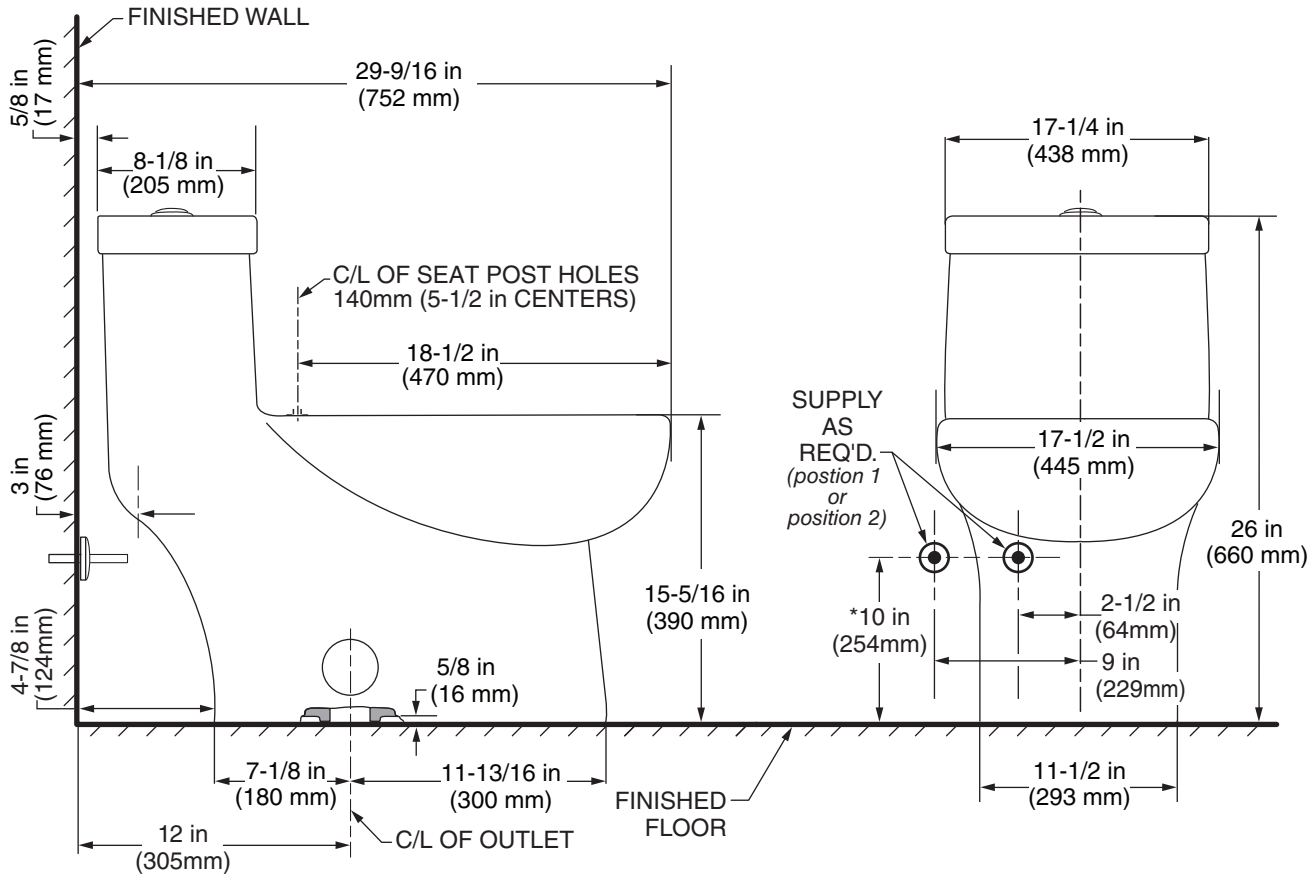
M-F 8:00 am - 6:00 pm CST  
Bilingual Spanish / English  
speaking associates



Product names listed herein are trademarks of AS America, Inc.  
© AS America, Inc. 2013

**ROUGHING-IN DIMENSIONS:**

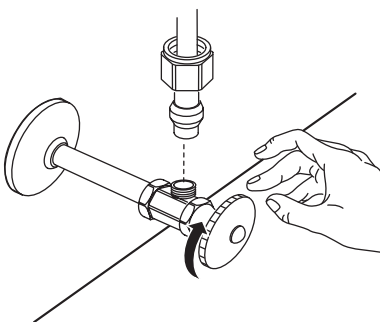
NOTE: Distance from wall to closet flange centerline must be as listed below:



**IMPORTANT:** Water supply on the wall is required at 2-1/2in (64mm) or 9in (229mm) from centerline of the toilet (see rough-in). First suggested position is hidden behind the toilet. The geometry of the toilet gives space for this installation. The second suggested position is next to the toilet. Between these two positions, the space for the supply between wall and toilet is limited to 4-7/8in (124mm). In this case, check your supply and hose dimensions.

**Before You Start:**

**Turn Off Water Supply**

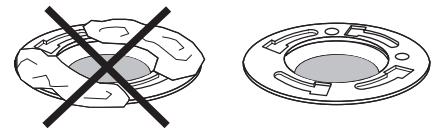


**If Removing An Existing Toilet**

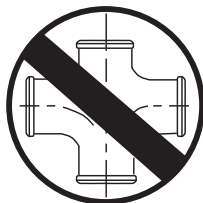
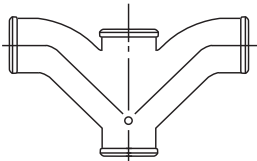
Flush to remove water from tank; sponge remaining water from bowl before removing toilet.



**Clean Flange**



**Caution:** If leaving floor flange open for more than 1-2 hours, cover flange to prevent escaping sewer gases.

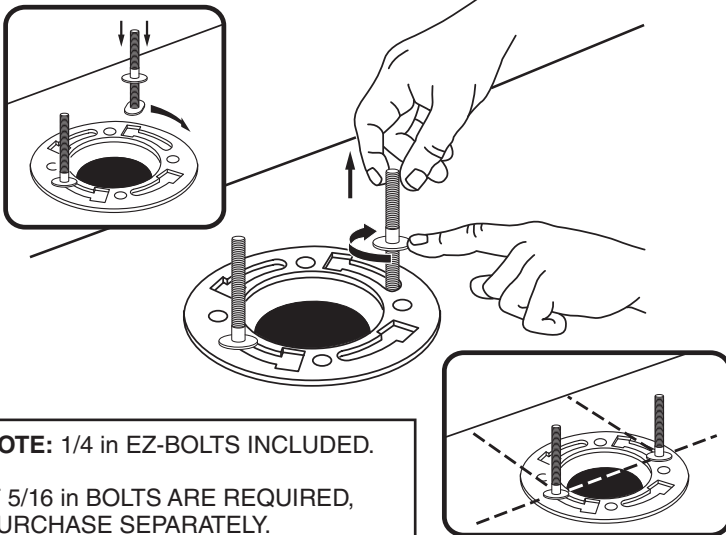


Recommended fitting type for back-to-back installations.

**BACK-TO-BACK INSTALLATION**

Depending upon your plumbing and venting conditions, the flow from the Ultima II in a back-to-back installation may create a vacuum on the system and draw water from the opposing bowl. The National Standards Plumbing Code prohibits the use of a cross fitting for drainage as throw over is possible. The code does approve a directional "Y" style fitting with proper venting to direct the water downward and away from the other toilet.

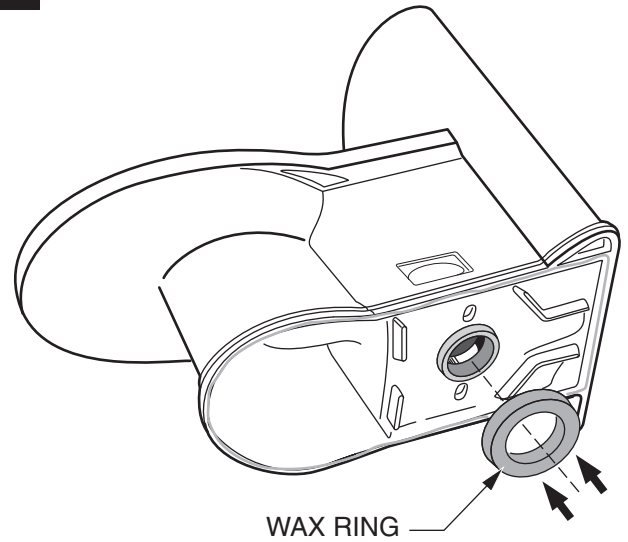
1



**NOTE:** 1/4 in EZ-BOLTS INCLUDED.

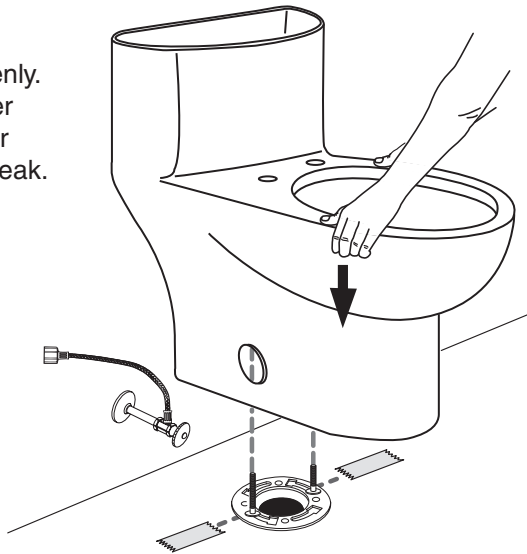
IF 5/16 in BOLTS ARE REQUIRED,  
PURCHASE SEPARATELY.

2 Press firmly.



3

Apply weight evenly.  
Do not move after  
placement. Water  
tight seal may break.



4

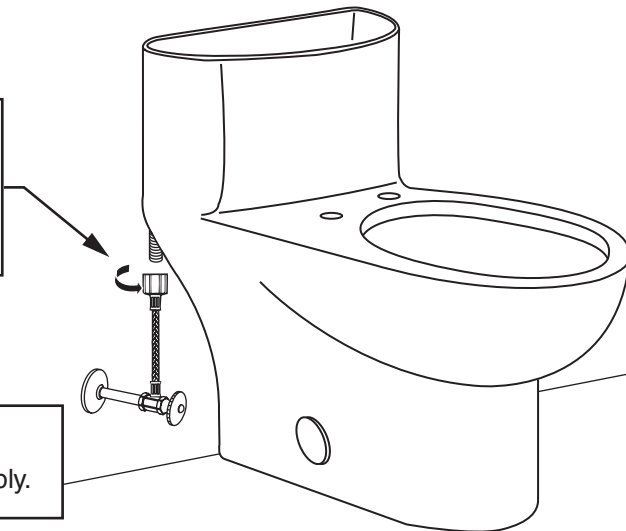
**!** Hand tighten  
only. Do not  
overtighten.



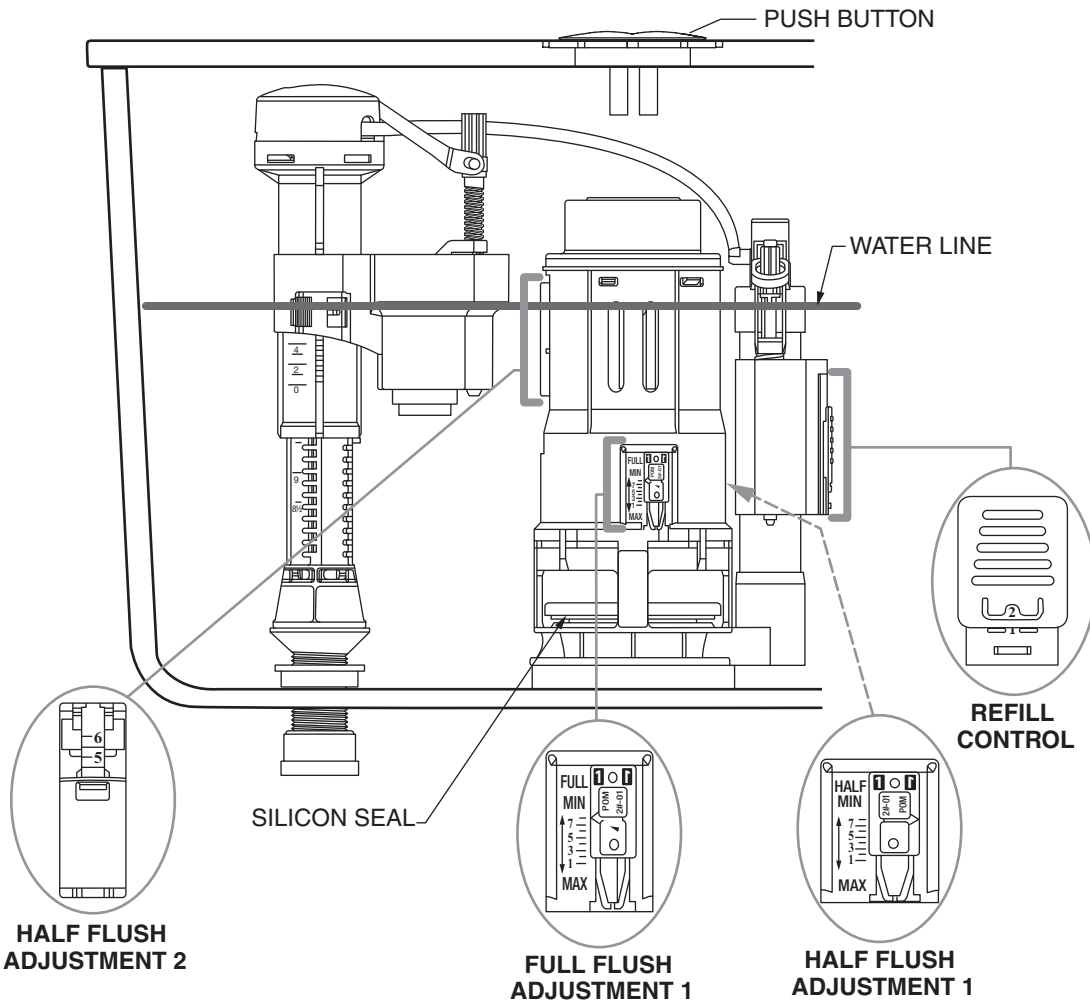
5

**(A)**  
Connect water  
supply line.  
Hand tighten nut.

**(B)**  
Turn on water supply.



**!** **WARNING:** Overtightening of  
water supply line nuts could  
result in breakage and potential  
flooding. If the connection leaks  
after hand tightening, replace  
the supply line. Do not use any  
type of sealant on the water  
supply connection. Use of  
plumber's putty, pipe dope, or  
any other type of sealant will  
void the warranty.



**ADJUSTMENTS**

- a. Adjust water level. Water level should be adjusted to level indicated on tank by adjusting as follows:
  - 1. Major water level adjustment - see page 4
  - 2. Minor water level adjustment - see page 4
- b. Flush Valve Setting Adjustments:

Flush Valve Setting Adjustments	Setting
Full Flush Adjustment 1	All the way up
Half Flush Adjustment 1	All the way up
Half Flush Adjustment 2	4.5

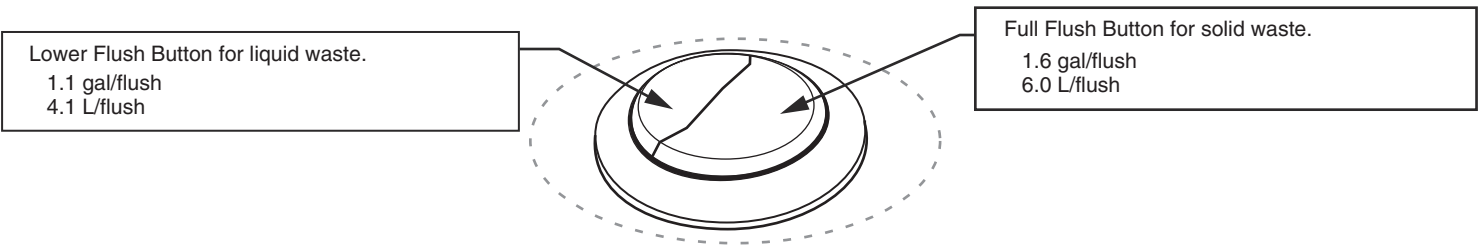
- c. Refill Control set at 2

**NOTE:** All other settings will result in either more or less water and are not recommended.

- To remove Flush Valve, apply slight downward pressure and twist it until the flush valve disengages from the bayonet.
- To reinstall Flush Valve, reverse the above procedure.

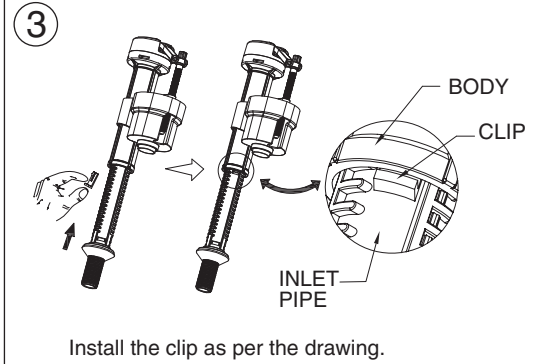
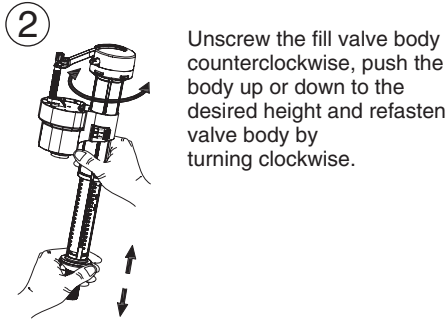
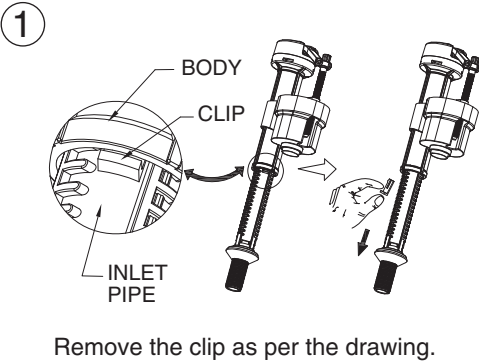
**FLUSH BUTTONS ON TANK**

Pressing both buttons at once will flush the low flush amount of 1.1 gal/flush or 4.1 L/flush. The **Lower Flush Button** should line up over the **blue actuator** on the flush tower in the tank. The **Full Flush Button** should line up over the **white actuator** on the flush tower in the tank.

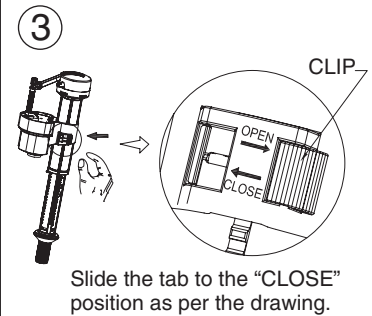
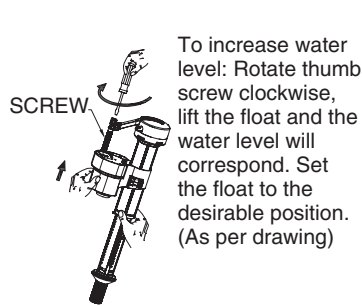
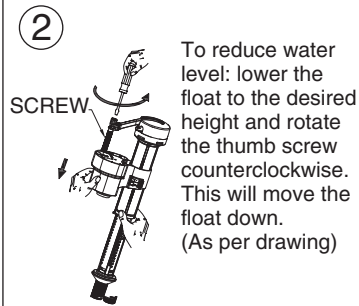
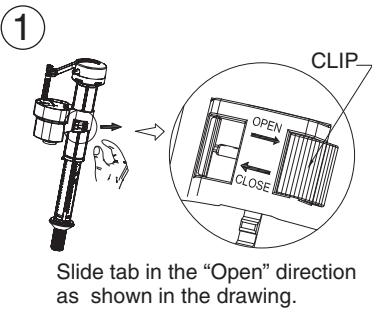


## WATER LEVEL ADJUSTMENT

### MAJOR WATER ADJUSTMENT



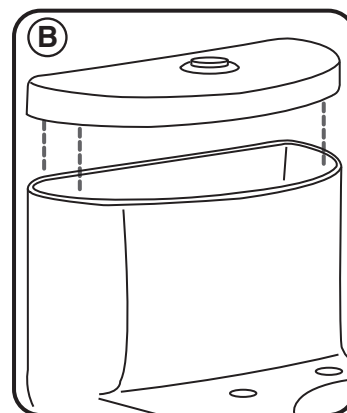
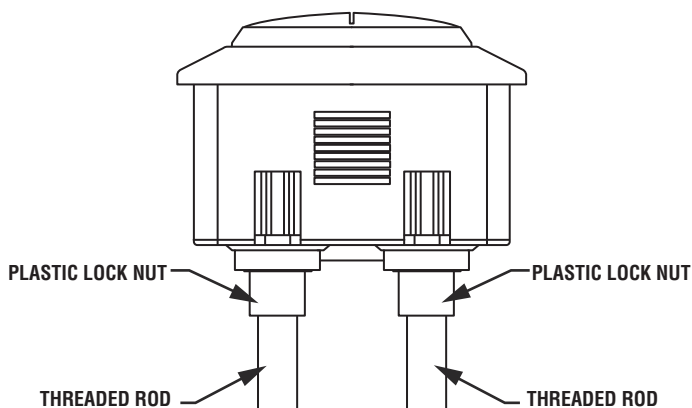
### MINOR WATER ADJUSTMENT



#### TIPS:

If the bowl still does not flush properly after following the steps outlined in the troubleshooting guide, remove the tank lid and push one of the flush buttons on top of the flush valve in the tank. If the flush appears to be normal, you will need to adjust the length of the threaded rods for the push buttons mounted on the tank lid with the settings as follows:

1. Turn the lid upside down.
2. Loosen the plastic lock nut.
3. Adjust the threaded rod one turn counterclockwise.
4. Re-tighten the plastic lock nut.
5. Put lid back on tank and test the flush. If it is still not flushing properly, repeat steps 1 through 4 until the problem is resolved.
6. If one counterclockwise turn is too much and causes the flush valve to stay open, adjust 1/2 turn clockwise and return to step 4.



### CARE AND CLEANING

When cleaning your toilet, wash it with mild, soapy water, rinse thoroughly with clear water and dry with a soft cloth.

**WARNING:** Do not use in-tank cleaners. These products can seriously corrode fittings in the tank. This damage can cause leakage and property damage. American Standard shall not be responsible or liable for any damage caused by the use of in-tank cleaners.

**TROUBLESHOOTING GUIDE - See Step 6 For Diagram**

PROBLEM	POSSIBLE CAUSE	CORRECTIVE ACTION
Does not flush	a. Water supply valve closed. b. Supply line blocked.	a. Open valve and allow water to fill tank. b. Shut off water supply, disconnect supply line and inspect all gaskets and washers. Reassemble.
Poor or sluggish flush	a. Bowl water level too low. b. Supply valve partly closed. c. Partially clogged trapway and/or drain pipe and/or vent. d. Supply pressure too low.	a. Check that refill tube is connected to water control and inserted into overflow tube without being kinked or damaged. b. Open supply valve fully. Be sure that proper supply tube size is used. c. Remove obstruction. Consult a plumber if necessary. d. Normal supply pressure must be at least 20 psi.
Toilet leaks	a. Poor supply line connection. b. Poor bowl to tank/floor connection.	a. Review Step 5 of installation procedure. b. Review Step 1 through 4 of installation procedure.
Toilet does not shut off	a. Flush valve seal leaking or deformed.	a. Clean debris from seal surface. Replace seal as needed.
Toilet bowl rocks after installation	a. Wax ring not fully compressed. b. Floor not level.	a. Retighten bowl-to-floor knobs. b. Use toilet shims and /or place a bead of caulk around the base of the toilet.

**REPAIR PARTS LIST**

Repair parts are determined by toilet tank number which can be found marked inside tank.  
**NOTE: "XXX"** represents color or trim finish options. Specify when ordering.

PART NO.	DESCRIPTION
735183-400.XXX0A	TANK COVER
7381283-200.XXX0A	PUSH BUTTON
7381290-200.0070A	R & T DUAL FLUSH VALVE
7381291-100.0070A	R & T INLET VALVE
7381292-100.0070A	REFILL TUBE
7381293-100.0070A	FLUSH VALVE SILICONE SEAL
7301540-200.XXX0A	BOLT CAP COVER KIT
5919C.001.XXX	R & T SLOW CLOSE ELONGATE SEAT

**⚠ WARNING:** Use of in tank cleaning products voids warranty as they may damage parts and cause leakage that may lead to property damage.

**FOR REPAIR PARTS LIST, SEE LABEL UNDER TANK LID.**

**AS AMERICA, INC. ONE YEAR LIMITED WARRANTY**

If inspection of this AS America, Inc. ("American Standard") plumbing product, within one year after its initial purchase, confirms that it is defective in materials or workmanship, American Standard will repair or, at its option, exchange the product for a similar model.

This limited warranty applies only to the original purchaser and installation of these products. In the event of a limited warranty claim, proof of purchase will be required—save sales receipt.

This limited warranty does not apply to local building code compliance. Since local building codes vary considerably, the purchaser of this product should check with a local building or plumbing contractor to insure local code compliance before installation.

This limited warranty is void if the product has been moved from its initial place of installation; if it has been subjected to faulty maintenance, abuse, misuse, accident or other damages; if it was not installed in accordance with American Standard's instructions; or if it has been modified in a manner inconsistent with the product as shipped by American Standard.

American Standard's option to repair or exchange the product under this limited warranty does not cover any labor or other costs of removal or installation. **IN NO EVENT WILL AMERICAN STANDARD BE LIABLE FOR THE COST OF REPAIR OR REPLACEMENT OF ANY INSTALLATION MATERIALS, INCLUDING BUT NOT LIMITED TO, TILES, MARBLE, ETC.** American Standard will not be responsible for any other incidental or consequential damages attributable to a product defect or to the repair or exchange of a defective product, all of which are expressly excluded from this limited warranty. This limited warranty does not cover any liability for consequential or incidental damages, all of which are hereby expressly disclaimed, or the extension beyond the duration of this limited warranty of any implied limited warranties, including those of merchantability or fitness for an intended purpose. (Some states or provinces do not allow the exclusion or limitation of implied limited warranties, so this exclusion may not apply to you.)

This limited warranty gives you specific legal rights. You may have other statutory rights that vary from state to state or from province to province, in which case this limited warranty does not affect such statutory rights.

**In the United States:**

American Standard Brands  
P.O. Box 6820

Piscataway, New Jersey 08855  
Attention: Director of Customer Care

For residents of the United States, warranty information may also be obtained by calling the following toll free number: (800) 442-1902

www.americanstandard.com

M-F 8:00 am - 8:00 pm EST  
Sat 8:00 am - 6:00 pm EST

English speaking, Select associates  
bilingual English/Spanish

**In Canada:**

AS Canada, ULC  
5900 Avebury Rd.  
Mississauga, Ontario  
Canada L5R 3M3

Toll Free: (800) 387-0369  
www.americanstandard.ca

M-F 8:00 to 16:00 EST  
French and English  
speaking associates

**In Mexico:**

American Standard B&K Mexico  
S. de R.L. de C.V.  
Via Morelos #330  
Col. Santa Clara  
Ecatepec 55540 Edo. Mexico

Toll Free: 01-800-839-1200  
www.americanstandard.com.mx

M-F 8:00 am - 6:00 pm CST  
Bilingual Spanish / English  
speaking associates

**THIS WARRANTY IS NOT TRANSFERABLE FROM ORIGINAL CONSUMER PURCHASER.**